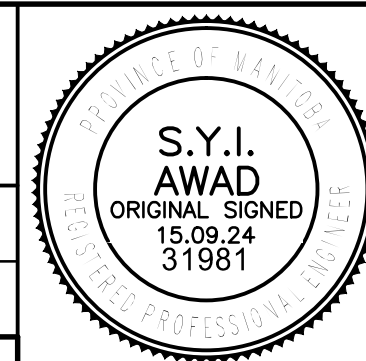


NOTES:

- TH REFERS TO BOREHOLE TEST LOGS. TEST HOLES WERE TAKEN BY TREK GEOTECHNICAL BETWEEN AUGUST 20 AND 22, 2014.
- THE TEST HOLE LOGS PROVIDED FOR THIS PROJECT HAVE BEEN COMPILED FOR DESIGN PURPOSES ONLY. WHILE IT IS BELIEVED TO CORRECTLY REPRODUCE OR SUMMARIZE OBSERVATIONS MADE DURING TESTING, THE INFORMATION IS VALID ONLY FOR THE PRECISE LOCATIONS SHOWN AND IS NOT TO BE CONSTRUED AS GUARANTEEING THE PRESENCE, ABSENCE, OR EXTENT OF BOULDERS, HARD OR SOFT FORMATIONS, WATER TABLES, ARTESIAN CONDITIONS AND OTHER VARIABLES. IT IS THE RESPONSIBILITY OF OTHERS USING THIS INFORMATION TO ENSURE THAT IT IS ADEQUATE FOR THEIR PURPOSES OR TO SUPPLEMENT IT WITH ADDITIONAL INFORMATION.
- STANDPIPE PIEZOMETERS WERE INSTALLED IN THE BEDROCK AND SILT LAYER TO ASSESS GROUNDWATER LEVELS IN TH14-01, TH14-04 AND TH14-06.
- CONTOURS SHOWN ARE EXISTING.
- LOCATION OF UTILITIES ARE APPROXIMATE ONLY. LOCATION TO BE CONFIRMED IN THE FIELD.



B.M. ELEV.			
DESIGNED BY	D.M.	CHECKED BY	S.A.
DRAWN BY	G.I.	APPROVED BY	E.F.S.
HOR. SCALE:		ACCEPTED BY DATE	
VERTICAL: AS NOTED		ORIGINAL DRAWING SIGNED BY: D.N. BURMEY, P.ENG. 15.09.24	
0 ISSUED FOR TENDER 15.09.24 S.A.		D.N. BURMEY, P.ENG. 15.09.24	
NO. REVISIONS	DATE	BY	DATE
			15.09.24



		THE CITY OF WINNIPEG PUBLIC WORKS DEPARTMENT ENGINEERING DIVISION	
NESS AVENUE AT STURGEON CREEK BRIDGE CONSTRUCTION		CITY DRAWING NUMBER B243-15-006 SHEET 6 OF 64	
BOREHOLE LOCATIONS		6	

CONSULTANT DRAWING NO.
1400070800-DWG-S0006