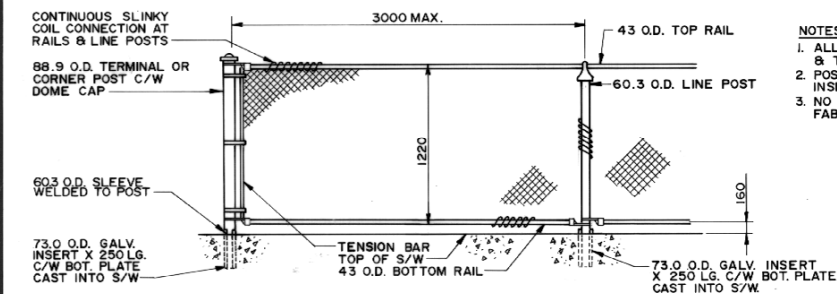
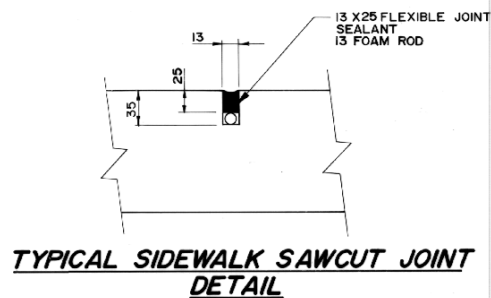


ALUMINUM BALANCED SHOULDER BARRIER DETAIL FRONT ELEVATION

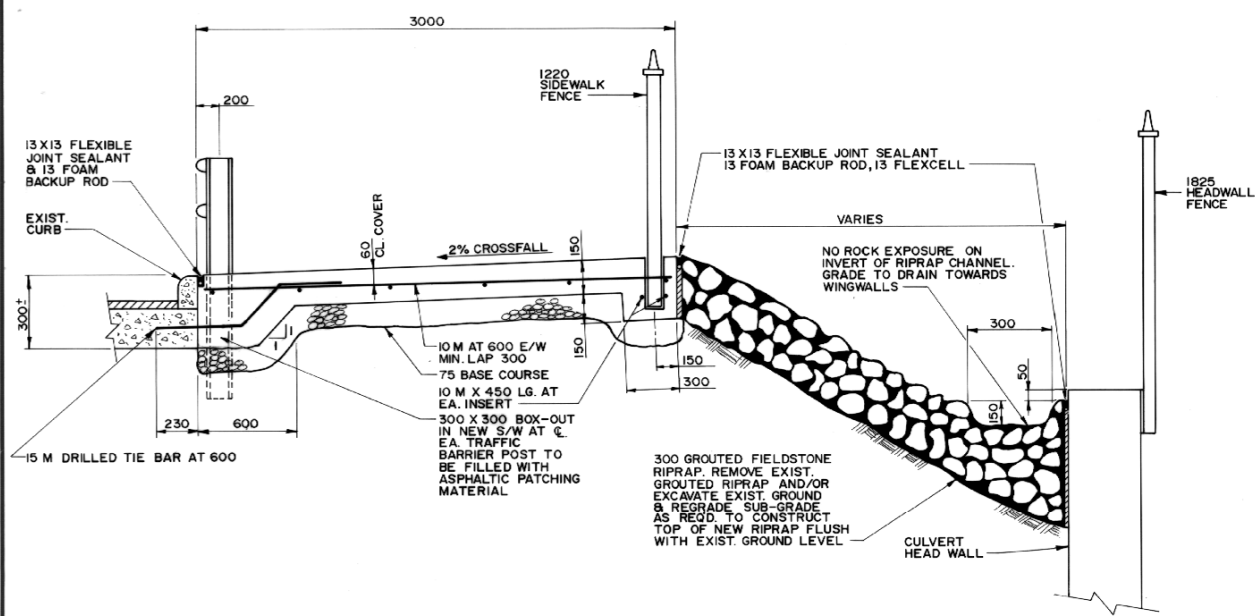


SIDEWALK CHAINLINK FENCE INSTALLATION DETAIL

- NOTES**
1. ALL FENCING TO BE GALVANIZED, AS SPECIFIED, & TOUCHED UP USING THE GALVALLOY PROCESS.
 2. POSTS ARE TO BE LEADED INTO GALVANIZED INSERTS.
 3. NO SHARP POINTS TO REMAIN ON WIRE MESH FABRIC.



TYPICAL SIDEWALK SAWCUT JOINT DETAIL

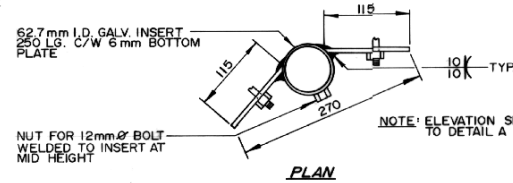


SECTION 1-01/02

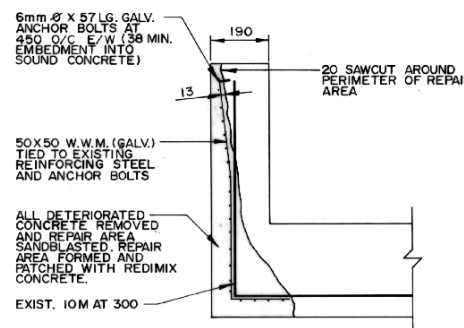
- NOTES:**
1. EXISTING RAIL LENGTH TO BE VERIFIED IN THE FIELD.
 2. POST SPACING & RAIL SPLICE LOCATIONS MAY BE ADJUSTED IN FIELD TO SUIT EXIST. RAILS.
 3. ALL RAILS 11430 EXCEPT AS NOTED.
 4. BARRIER TO FOLLOW B.O.C.
 5. APPLY AN ANTI-SEIZE COATING TO ALL CAP SCREWS, AN APPROVED PRODUCT IS LPS3.
 6. NEW POSTS WILL BE SUPPLIED BY THE CITY F.O.B. THE CITY BRIDGE YARD.

BILL OF MATERIALS				
ALUMINUM BALANCED SHOULDER BARRIER				
ITEM	TOTAL REQ'D.	SALVAGED FROM EXIST.	NEW	RETURN TO CITY
11430 RAIL	9	10	0	1
8000 RAIL	0	2	0	1
4000 RAIL	1	0	0	1
1900 POSTS	6	8	0	0
1600 POSTS	6	3	3	0
800 POSTS	2	2	0	0
457.2 SPLICE BAR	8	9	0	1
181 RAIL CLAMP BAR	60	62	0	2
CAP SCREWS	152	160	0	8
WASHERS	152	160	0	8

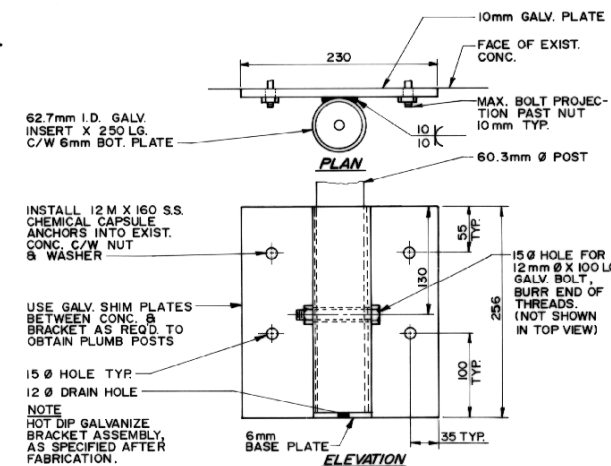
* CUT FROM 8000 RAIL



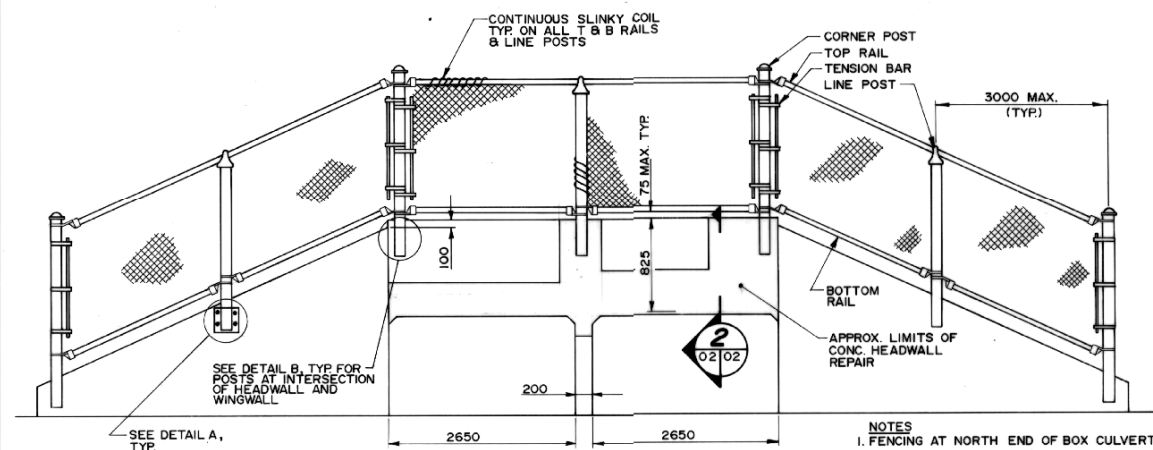
DETAIL B - POST BRACKET



SECTION 2-02/02



DETAIL A - POST BRACKET FABRICATION & INSTALLATION



ELEVATION - SOUTH END OF BOX CULVERT

- NOTES**
1. FENCING AT NORTH END OF BOX CULVERT SIMILAR TO SOUTH END.
 2. CHAINLINK FENCE TO BE 1825 HIGH.
 3. ALL TERMINAL, CORNER & LINE POSTS TO BE 60.3mm O.D.
 4. TOP & BOTTOM RAILS TO BE 43mm O.D.
 5. ALL FENCING MATERIAL TO BE GALVANIZED, AS SPECIFIED AND TOUCHED UP USING THE GALVALLOY PROCESS.
 6. NO SHARP POINTS TO REMAIN ON ENDS OF WIRE MESH FABRIC.

RECORD DRAWING

APPROVED BY: *M. Wiebe* DATE: 09/11/07

NO.	REVISIONS	DATE	BY

DILLON
Consulting Engineers • Planners
Environmental Scientists

DESIGNED BY: B.A.N.	CHECKED BY: R.A.W.
DRAWN BY: R.M.A.	APPROVED BY: R.A.W.
HOR. SCALE: N.T.S.	AUTHORIZED BY: <i>M. Wiebe</i> 16/11/03
VERTICAL: N.T.S.	REGISTERED ENGINEER
	ACCEPTED BY: <i>J. B. ...</i> 22/08/03
	BRIDGE INSPECTOR

ENGINEER'S SEAL
PROVINCE OF MANITOBA
68.07.23
R. A. WIEBE
REGISTERED ENGINEER

THE CITY OF WINNIPEG
WORKS AND OPERATIONS DIVISION

1988 BRIDGE MAINTENANCE
MISCELLANEOUS REHABILITATION WORKS
PHASE I

NESS AVE. AT STURGEON CREEK
WORKS

CITY DRAWING NUMBER: C324-88-02
SHEET 2 OF 2

B-5798-2