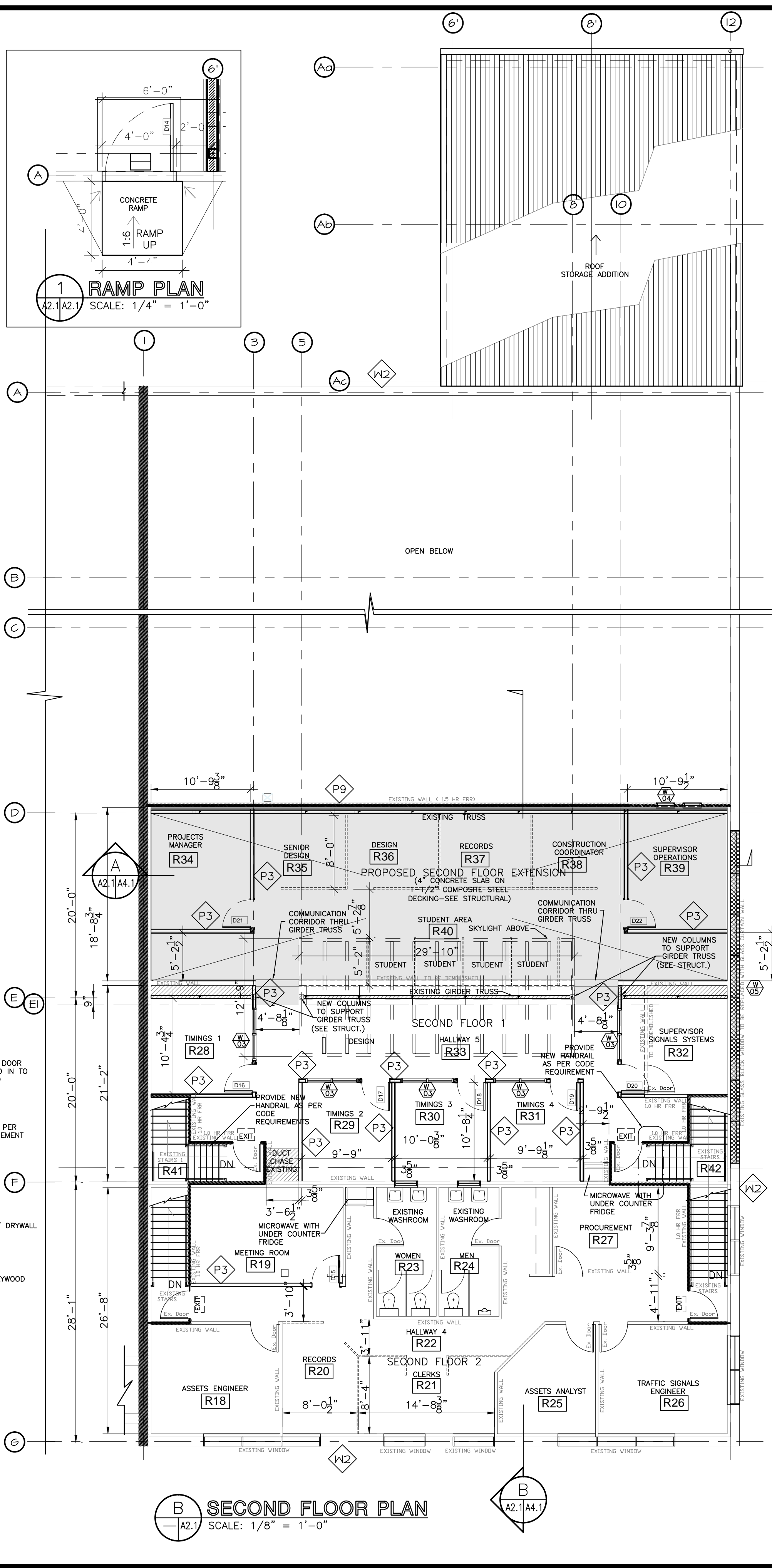
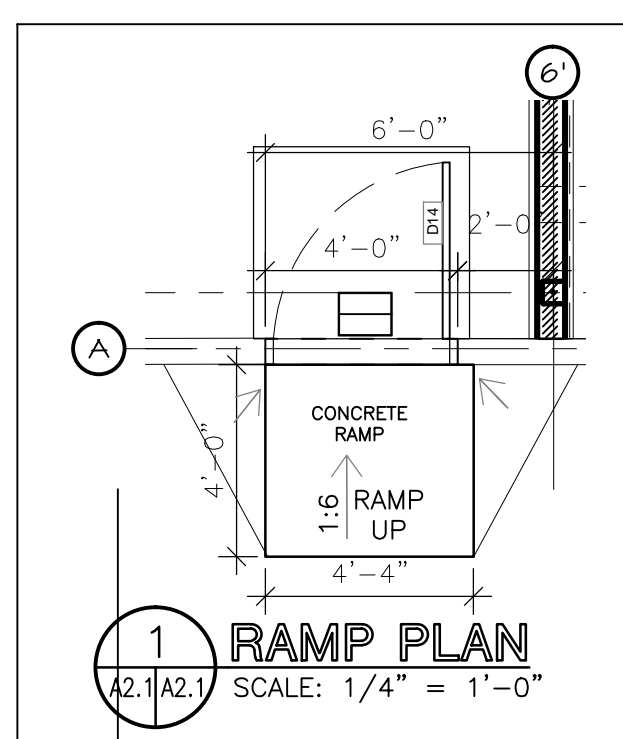


**A MAIN FLOOR PLAN**  
 A2.1/A4.1 SCALE: 1/8" = 1'-0"



**B SECOND FLOOR PLAN**  
 A2.1/A4.1 SCALE: 1/8" = 1'-0"



**1 RAMP PLAN**  
 A2.1/A2.1 SCALE: 1/4" = 1'-0"

WALL TYPES	
W1	2" INSULATED METAL PANEL 1" POLYISO INSULATION WEATHER BARRIER BATT INSULATION 5/8" EXT. DRYWALL 6" STEEL STUD @ 24" O.C. VAPOUR BARRIER (1) LAYER 1/2" DRYWALL METAL LINER
W1A	1.5HR FRR ULC W425 2" INSULATED METAL PANEL 1" POLYISO INSULATION WEATHER BARRIER MINERAL WOOL BATT INSULATION (2) LAYERS 1/2" TYPE "X" DRYWALL 6" 20 GA. STEEL STUD @ 24" O.C. VAPOUR BARRIER (2) LAYER 1/2" TYPE "X" DRYWALL METAL LINER
W1B	1.0HR FRR ULC423 2" INSULATED METAL PANEL 1" POLYISO INSULATION WEATHER BARRIER MINERAL WOOL BATT INSULATION (1) LAYER 5/8" TYPE "X" DRYWALL 6" 20 GA. STEEL STUD @ 24" O.C. VAPOUR BARRIER (1) LAYER 5/8" TYPE "X" DRYWALL METAL LINER (STORAGE SIDE ONLY)
W2	EXISTING EXTERIOR WALL
P1	IN-FILL WALL TO MATCH EXISTING UNLESS OTHERWISE NOTED
P2	(1) LAYER 1/2" GYPSUM BOARD 3-5/8" STEEL STUDS @ 16" O/C BATT INSULATION (1) LAYER 1/2" GYPSUM BOARD
P2A	(1) LAYER 1/2" GYPSUM BOARD 3-5/8" STEEL STUDS @ 16" O/C BATT INSULATION (1) LAYER 1/2" GYPSUM BOARD METAL LINER (STORAGE SIDE ONLY)
P3	NBC A-9.10.3.1.A. S14b STC 59 (2) LAYER 1/2" TYPE "X" GYPSUM BOARD 3-5/8" STEEL STUDS @ 16" O/C 3-1/2" THK. SOUND ABSORPTIVE MATERIAL RESILIENT METAL CHANNELS ON ONE SIDE @ 24" O/C (2) LAYER 1/2" TYPE "X" GYPSUM BOARD (EXTEND WALL TO UNDERSIDE OF SLAB/ROOF)
P4	(1) LAYER 1/2" GYPSUM BOARD 6" STEEL STUDS @ 16" O/C BATT INSULATION (1) LAYER 1/2" GYPSUM BOARD
P4A	NBC A-9.10.3.1.A. S9b STC 57 (2) LAYER 1/2" TYPE "X" GYPSUM BOARD 6" STEEL STUDS @ 16" O/C 3-1/2" THK. SOUND ABSORPTIVE MATERIAL (2) LAYER 1/2" TYPE "X" GYPSUM BOARD (EXTEND WALL TO UNDERSIDE OF SLAB/ROOF)
P5	1" THK. HDPE TOILET PARTITIONS, DOORS AND PILASTERS
P6	NBC A-9.10.3.1.A. S5c 1.0HR FRR (1) LAYER 1/2" TYPE "X" GYPSUM BOARD 3-5/8" STEEL STUDS @ 16" O/C 3-1/2" THK. MINERAL FIBRE BATT INSULATION (2) LAYER 1/2" TYPE "X" GYPSUM BOARD (EXTEND WALL TO UNDERSIDE OF SLAB/ROOF)
P7	GLASS PARTITION * - 1.0HR FIRE RATING NBC A-9.10.3.1.A. S5c 1.0HR FRR (1) LAYER 1/2" TYPE "X" GYPSUM BOARD 3-5/8" STEEL STUDS @ 16" O/C 3-1/2" THK. MINERAL FIBRE BATT INSULATION (2) LAYER 1/2" TYPE "X" GYPSUM BOARD (EXTEND WALL TO UNDERSIDE OF SLAB/ROOF)
P8	BELOW NEW WINDOW: EXISTING FURRING WALL (1) LAYER 1/2" TYPE "X" GYPSUM BOARD VAPOUR BARRIER 6" STEEL STUD @ 16" O/C BATT INSULATION (1) LAYER 5/8" EXTERIOR SHEATHING WEATHER MEMBRANE 2" RIGID INSULATION METAL CLADDING
P9	EXISTING 1.5 HR FRR 2 LAYERS 5/8" UL DRYWALL 2x6 WOOD STUD MINERAL FIBRE ABSORPTIVE MATERIAL 2 LAYERS 5/8" UL DRYWALL
<b>GENERAL NOTES ON 1.0 HR FIRE RATED WALL/CEILING ASSEMBLY:</b>	
1. FIRE RATED PARTITION TO EXTEND TO UNDERSIDE OFFLOOR/ROOF DECK AND FIRE CAULKED.	
2. DUCTWORK PENETRATIONS TO BE PROVIDED WITH FIRE DAMPERS AND FIRE CAULKED.	
3. ELECTRICAL CONDUITS AND CABLE TRAY PENETRATIONS TO BE FIRE CAULKED AS PER ELECTRICAL CODE.	
4. DOOR GLAZING ON DESIGNATED EXIT PATHS TO BE GEORGIAN WIRED GLASS 1,240 in <sup>2</sup> (0.80m <sup>2</sup> ) MAXIMUM.	

REV	DESCRIPTION	DATE	BY
01	ISSUED FOR TENDER	JUNE 10 2015	AR
00	ISSUED FOR CONSTRUCTION	JUNE 2 2015	AR

FLOOR PLANS

PROJECT: **TRANSPORTATION MANAGEMENT CENTRE RENOVATIONS**  
 BID # 427-2015  
 821 Elgin Ave., Winnipeg, Manitoba

Neil Cooper Architect Inc.

10-395 Berry Street, Winnipeg, Manitoba R3J 1N6

DATE	SCALE	SHEET NO.	REV NO.
DEC 3, 2014	AS NOTED	A2.1R1	

14132Cont Docts\Cont Dwgs\Arch\A2.1