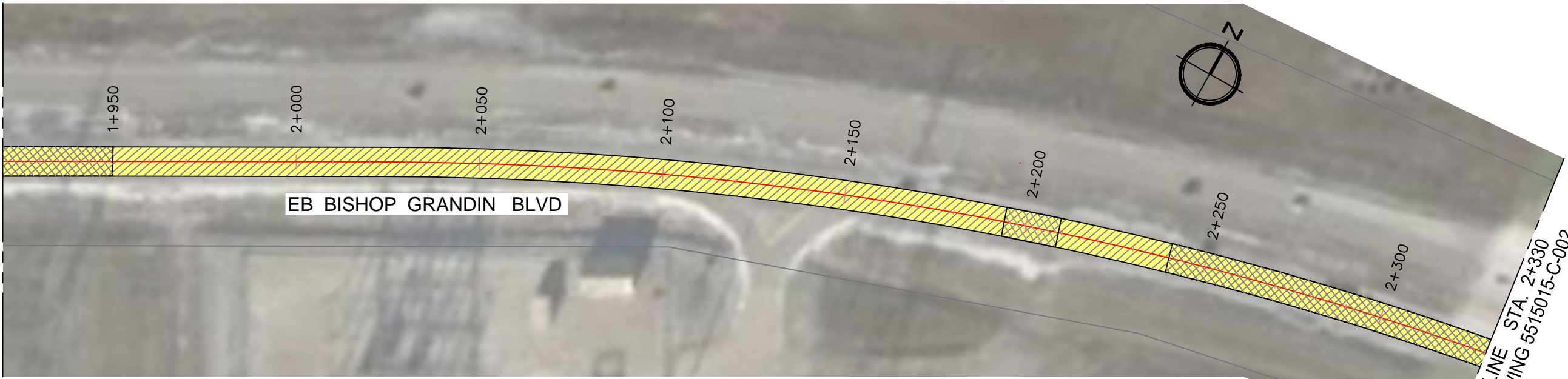


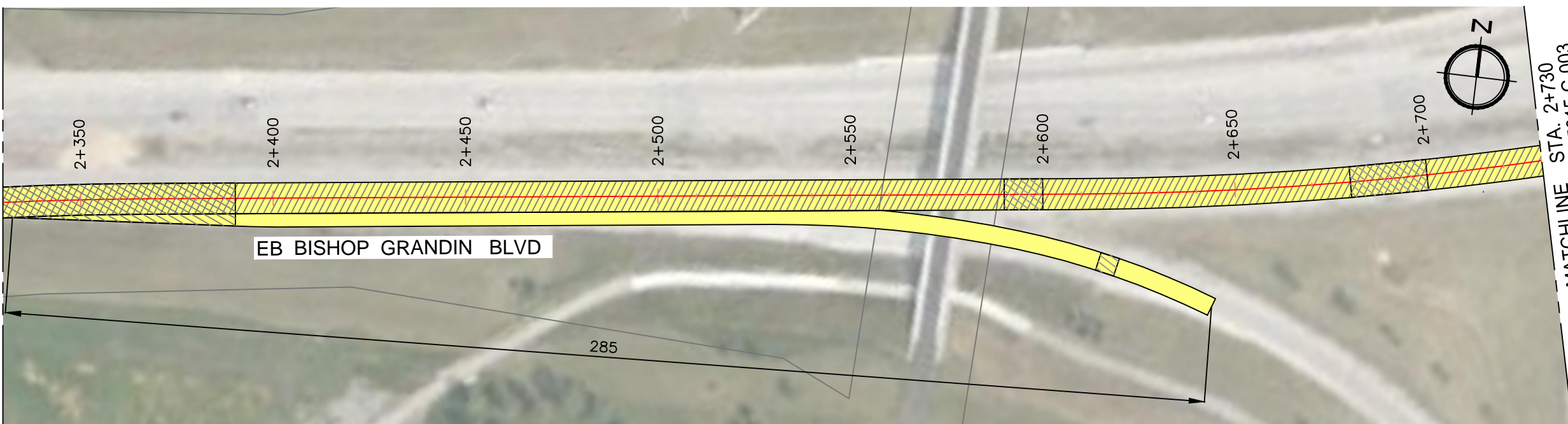
Apr. 20, 2015 - 10:47am C:\Users\jmaroti\AppData\Local\Temp\AspPublish\7344\5515015-C-001-3_BISHOP EB-DO.dwg - Job: EB Bishop Grandin 2

MATCHLINE STA. 1+920
SEE DRAWING 5515015-C-001



MATCHLINE STA. 2+330
SEE DRAWING 5515015-C-002

MATCHLINE STA. 2+330
SEE DRAWING 5515015-C-002



MATCHLINE STA. 2+730
SEE DRAWING 5515015-C-003

NOTES

1. ALL PARTIAL DEPTH JOINT REPAIRS, FULL DEPTH JOINT REPAIRS, AND SLAB REPAIR(S) WILL BE IDENTIFIED AND MARKED ON SITE BY CONTRACT ADMINISTRATOR.
2. THE CONTRACTOR WILL ARRANGE WITH THE CONTRACT ADMINISTRATOR ON SITE WALK THROUGH TO VERIFY ALL REPAIR LOCATIONS.

LEGEND

- CONCRETE AND PARTIAL DEPTH REPAIRS
- DIAMOND GRINDING
- FULL DEPTH CONCRETE REPAIRS/RECONSTRUCTION
- ASPHALT OVERLAY

NOTE: These design documents are prepared solely for the use by the party with whom the design professional has entered into a contract and there are no representations of any kind made by the design professional to any party with whom the design professional has not entered into a contract.

METRIC
WHOLE NUMBERS INDICATE MILLIMETRES
DECIMALIZED NUMBERS INDICATE METRES

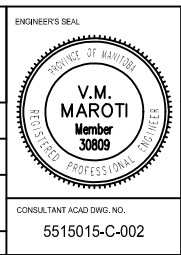


LOCATIONS APPROVED UNDERGROUND STRUCTURES	
SIGNED BY:	DATE
SUPV U/G STRUCTURES	

LOCATION OF UNDERGROUND STRUCTURES AS SHOWN ARE BASED ON THE BEST INFORMATION AVAILABLE BUT NO GUARANTEE IS GIVEN THAT ALL EXISTING UTILITIES ARE SHOWN OR THAT THE GIVEN LOCATIONS ARE EXACT CONFIRMATION OF EXISTENCE AND EXACT LOCATION OF ALL SERVICES MUST BE OBTAINED FROM THE INDIVIDUAL UTILITIES BEFORE PROCEEDING WITH CONSTRUCTION.

NO.	REVISIONS	DATE	BY
1	UPDATED BID OFF NO.	15/04/20	JPP
0	ISSUED FOR REVIEW	15/04/13	VMM

MMM GROUP		MMM Group Limited Suite 111 - 93 Lombard Ave Winnipeg, MB R3B 3B1 t. 204.943.3178 f. 204.943.4948 www.mmmlimitedgroup.com	
DESIGNED BY	J.P. / M.W	CHECKED BY	V.M.M.
DRAWN BY	S.B.	APPROVED BY	V.M.M.
HOR. SCALE	1:1250	RELEASED FOR CONSTRUCTION	
VERTICAL	-	DATE	15/04/20



THE CITY OF WINNIPEG PUBLIC WORKS DEPARTMENT STREETS MAINTENANCE DIVISION		CITY DRAWING NUMBER SHEET 2 OF 3
2015 STREETS MAINTENANCE PRESERVATION PROGRAM EB BISHOP GRANDIN BLVD FROM WAVERLEY ST TO 175 m WEST OF FORT GARRY BRIDGE STA. 1+920 TO STA. 2+730 CONCRETE AND PARTIAL DEPTH REPAIRS AND DIAMOND GRINDING		BID NO. 379-2015