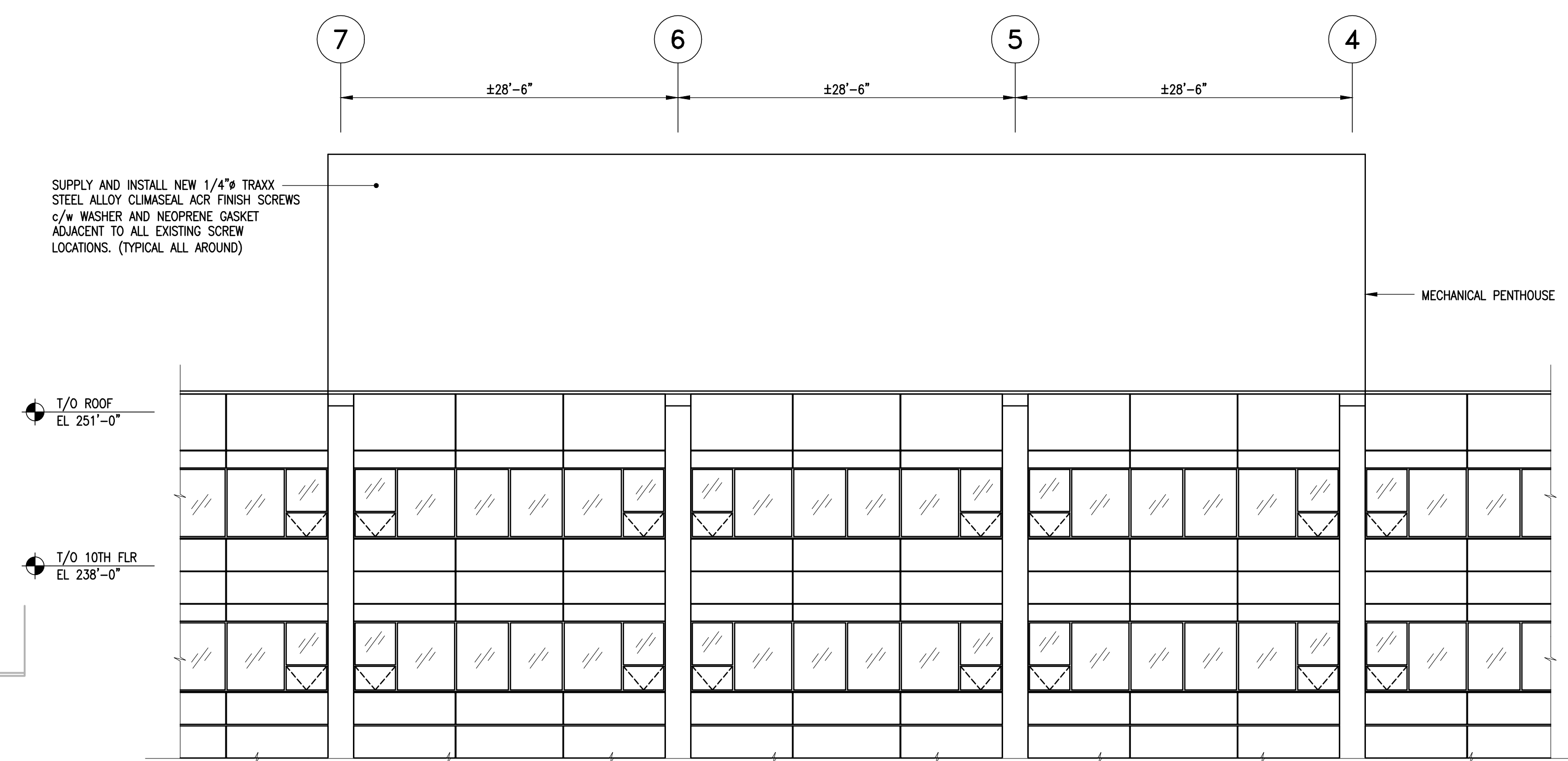
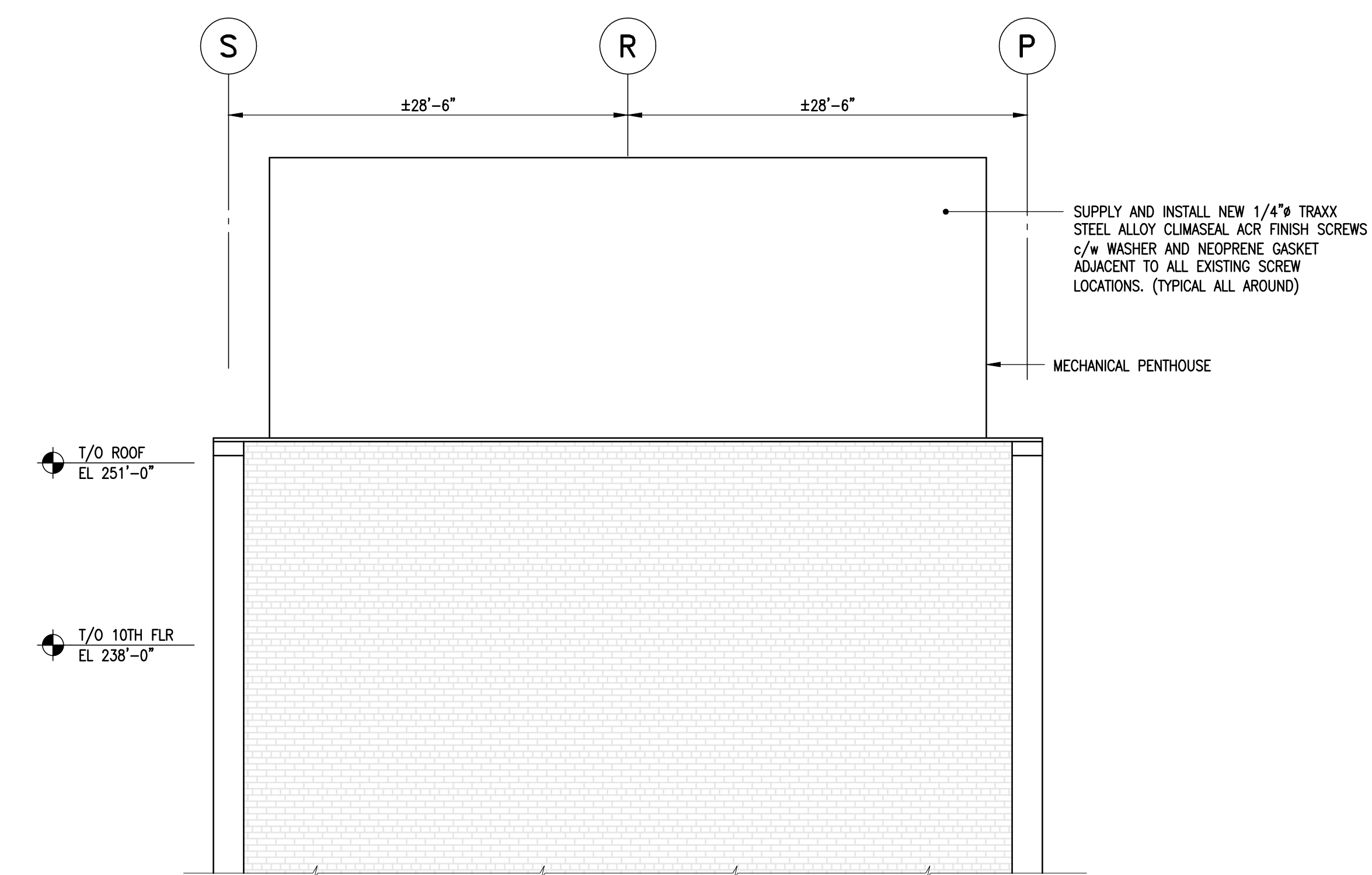




1 WEST ELEVATION
S1.3 1/8" = 1'-0"



2 MECHANICAL PENTHOUSE PARTIAL NORTH ELEVATION
S1.3 1/8" = 1'-0"



3 MECHANICAL PENTHOUSE PARTIAL WEST ELEVATION
S1.3 1/8" = 1'-0"

No.	Date	Issue/Revision	By
1	MAY 19/15	ISSUED FOR BID	JAW
0	MAY 8/15	ISSUED FOR CLIENT REVIEW	JAW

300-275 Carlton Street
Winnipeg, Manitoba R3C 5R6
T 204. 943. 7501
F 204. 943. 7507

Crosier Kilgour & Partners Ltd.
CONSULTING STRUCTURAL ENGINEERS

The General Contractor shall check & verify all dimensions and report any errors or omissions to the designers.

Project: **266 GRAHAM AVENUE CLADDING STABILIZATION**
WINNIPEG MANITOBA

Sheet Title: **BUILDING ELEVATIONS** Sheet No.: **S1.3**

Design	Drawn	Checked	Scale	Date	File
***	HJ	CMR	AS NOTED	MAY 19, 2015	2015-0071