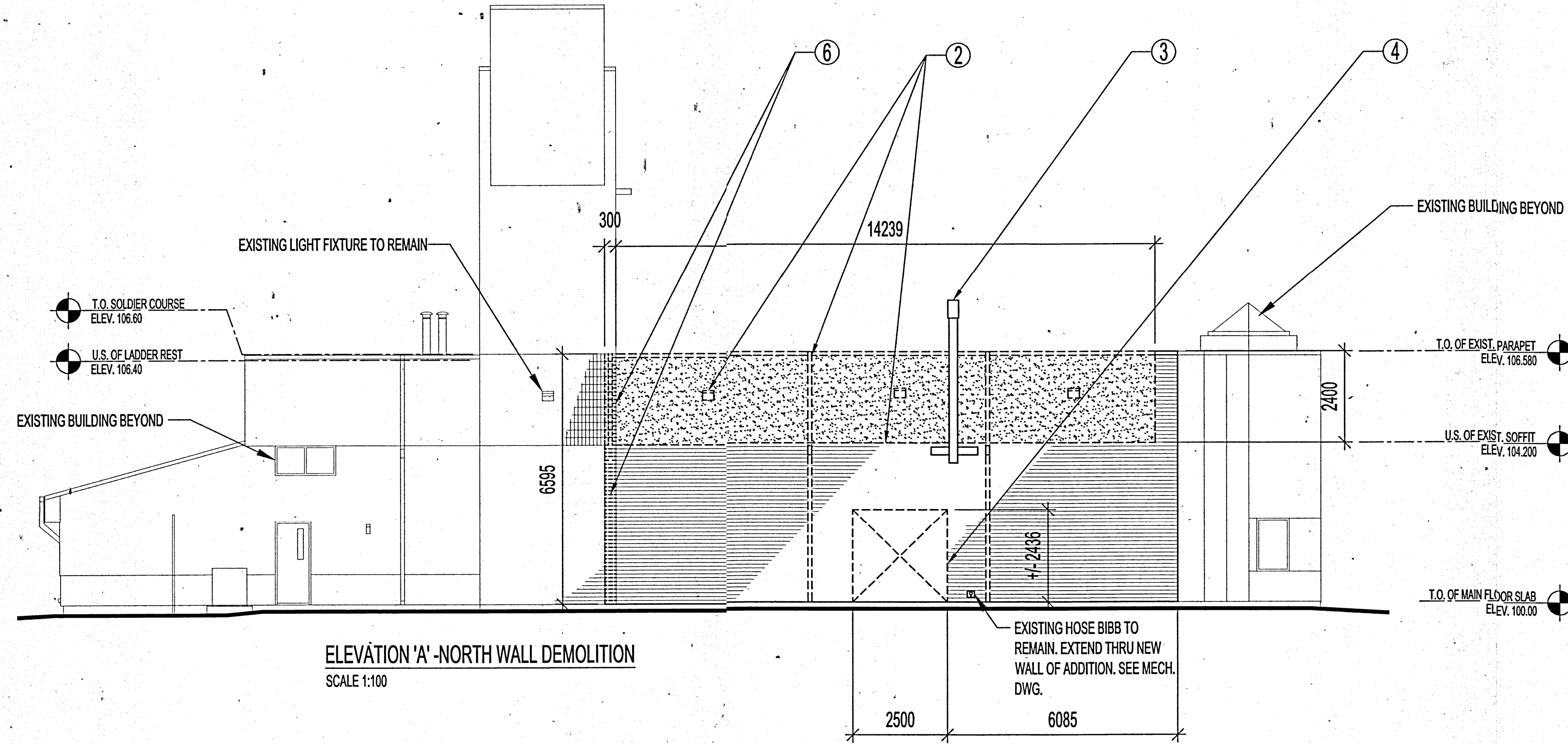
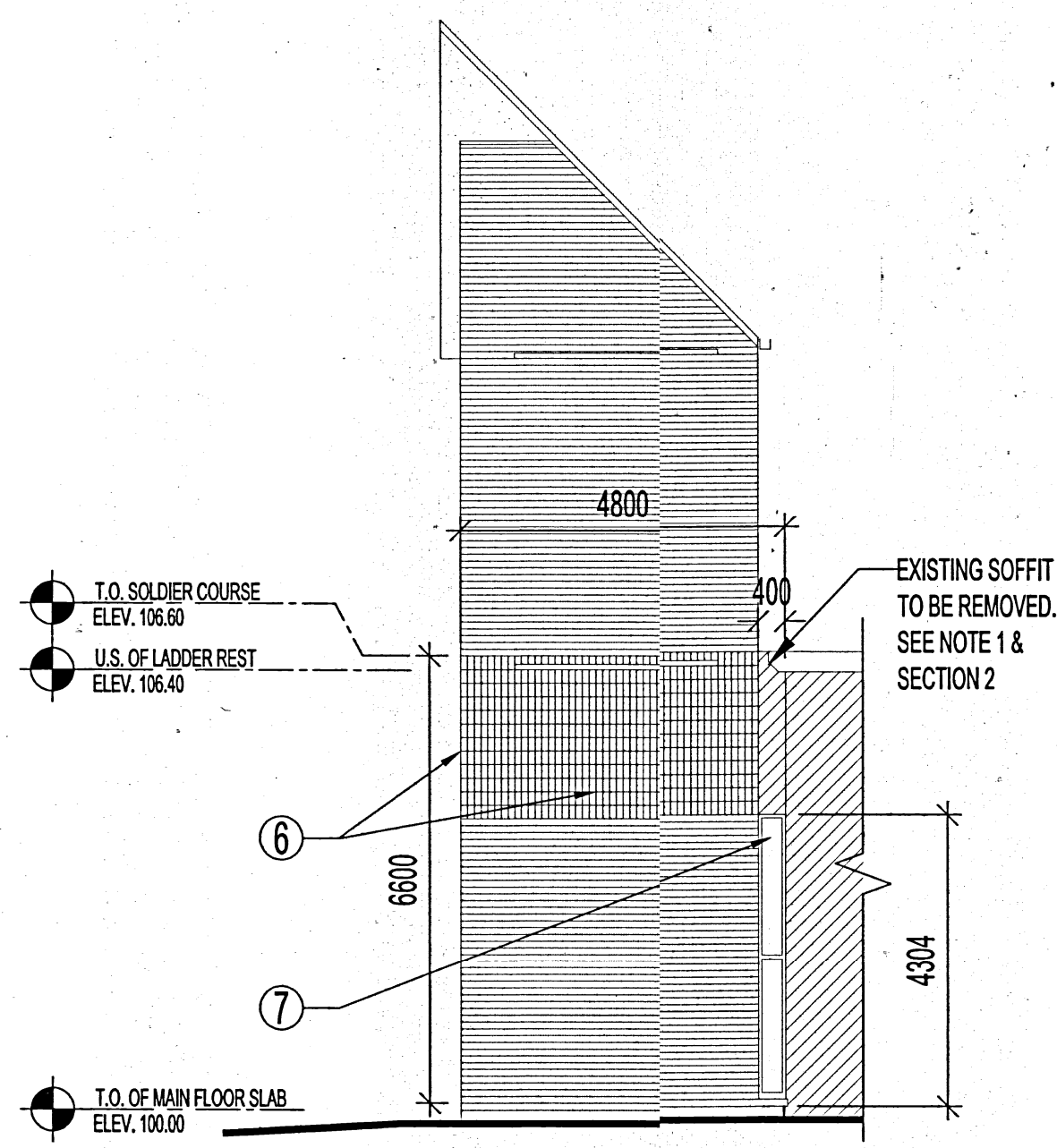


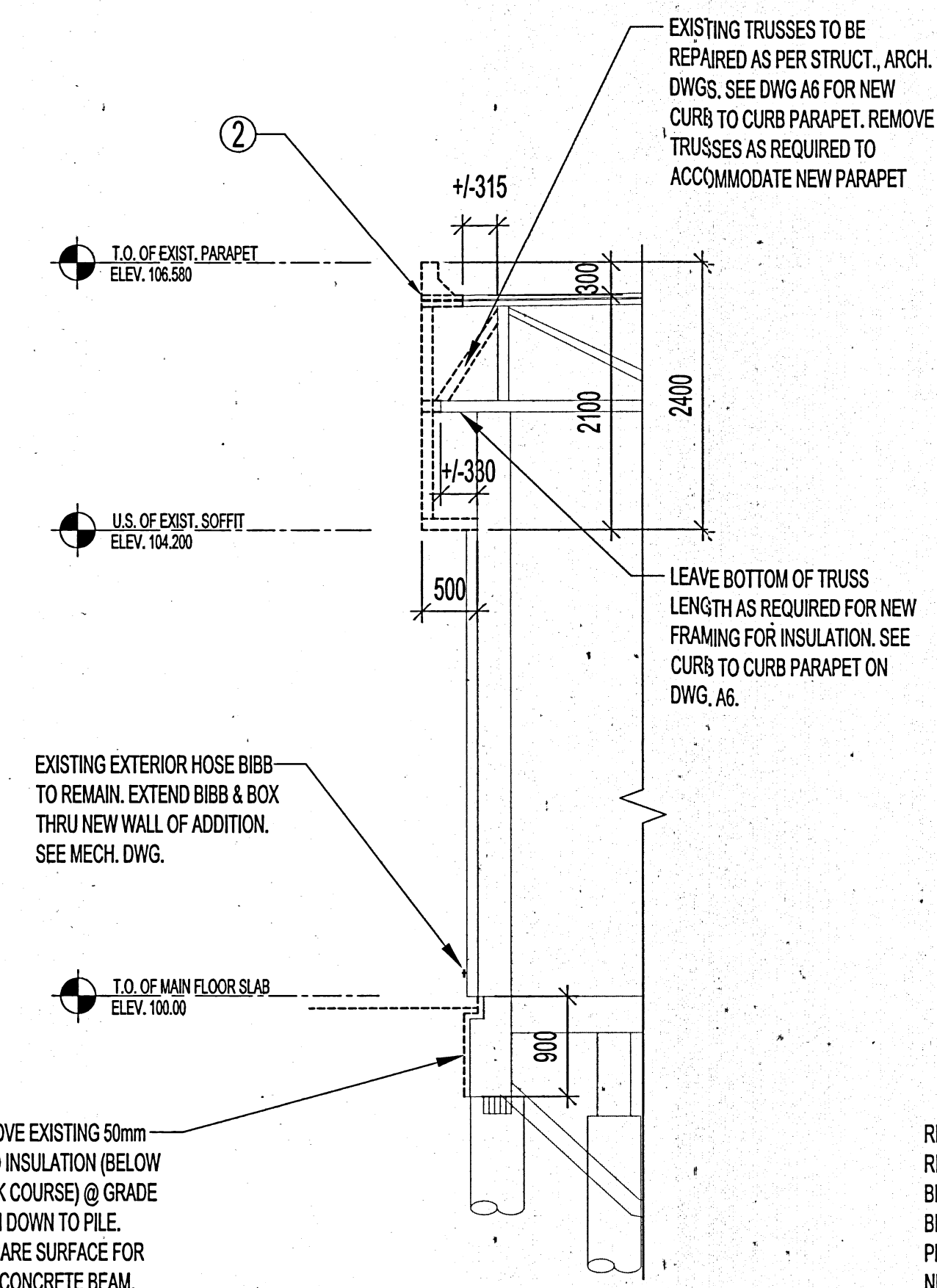
1 DEMOLITION PLAN
A1 | A1 SCALE 1:50



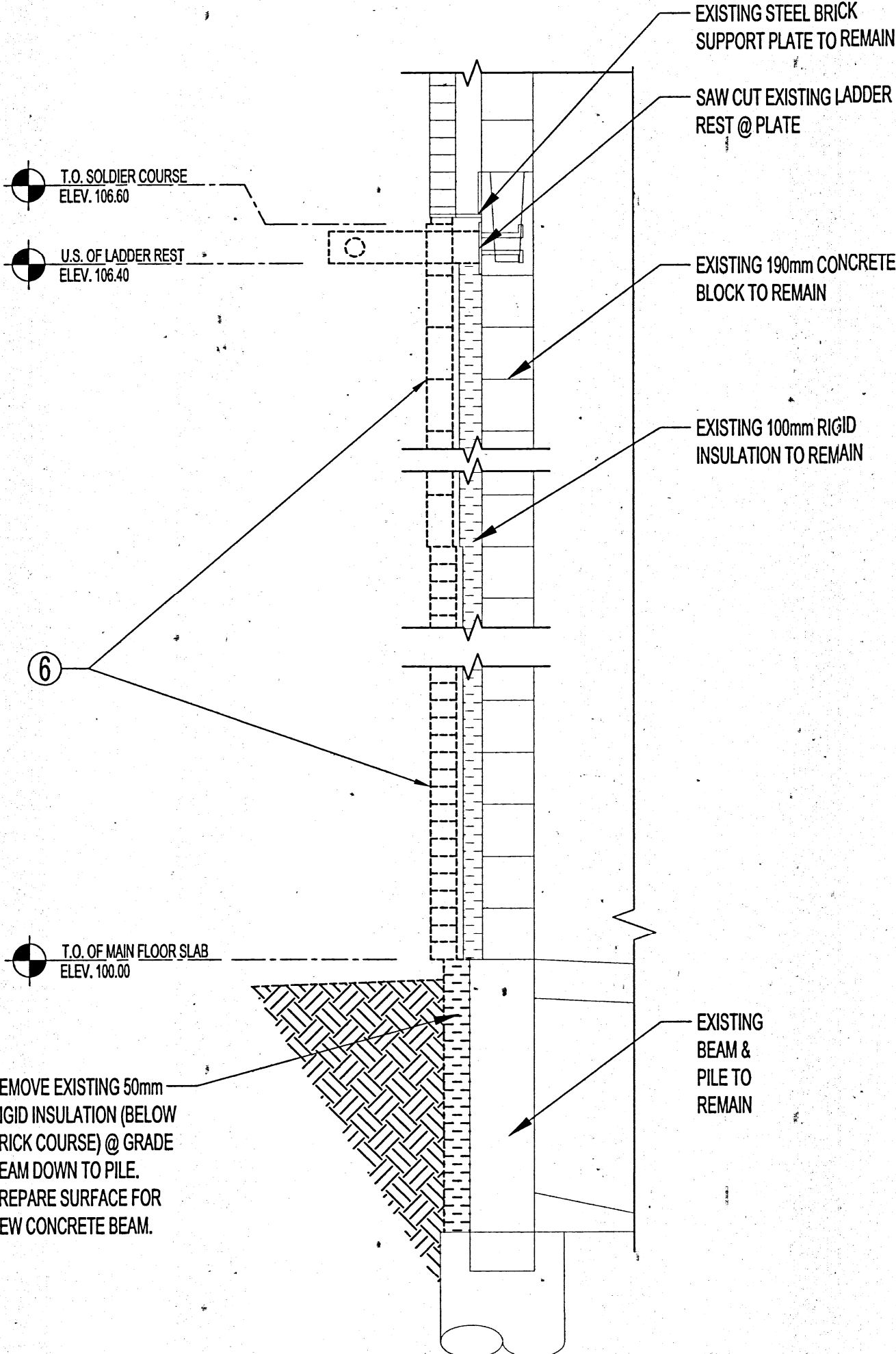
ELEVATION 'A' - NORTH WALL DEMOLITION
SCALE 1:100



ELEVATION 'B' - EAST WALL DEMOLITION
SCALE 1:100



2 SECTION - NORTH WALL
A1 | A1 SCALE 1:50



3 SECTION - EAST WALL (NORTH WALL OF TOWER SIM.)
A1 | A1 SCALE 1:50

DEMOLITION NOTES:

- CUT & REMOVE EXISTING SOFFIT VENTS & PLASTER APPLICATION FROM UIS OF (3) SOFFITS ABOVE OH DOORS. PREPARE OPENINGS & FRAME AS REQUIRED TO ACCEPT NEW PRE-FINISHED SOFFIT VENTS (450 DEEP) FOR ENTIRE LENGTH OF OPENINGS. SEE BUILDING ELEVATIONS, WALL SECTIONS FOR DETAILS OF VENTS.
- CUT, REMOVE & DISCARD EXISTING WOOD & STUCCO /PLASTER SOFFIT, PARAPET UP TO EDGE OF FACE BRICK. BRICK TO REMAIN. REMOVE (9) EXISTING EXTERIOR SURFACE MOUNTED LIGHT FIXTURES. WIRING CONNECTIONS TO BE REUSED SEE ELEC DWG. REMOVE RAINWATER LEADERS DOWN TO MAIN FLOOR ELEVATION. SEE ELEVATION 'A' & SECTION 2 FOR DIMENSIONS, MISC. DEMOLITION NOTES.
- EXISTING EXHAUST STACK & FAN TO REMAIN. PROVIDE OPENING IN ROOF OF ADDITION TO ACCOMMODATE EXHAUST STACK. FRAME & WATER PROOF NEW ROOF AS REQUIRED FOR EXISTING STACK. SEE MECH. DWGS.
- CUT, REMOVE EXISTING 90mm FACEBRICK, 100mm INSULATION & 190mm CONCRETE BLOCK IN OPENING. PROVIDE NEW LINTEL AND CONCRETE BLOCK WALL AS SHOWN ON ARCH. & STRUCT. DWGS. FACE BRICK ABOVE NEW DOOR OPENING MAY BE REMOVED FOR NEW LINTEL.
- DEMOLISH & REMOVE EXISTING SLAB ON GRADE CONCRETE (APPROX. 5 m x 22 m) FROM HOSE TOWER TO STREET AS REQUIRED. SEE LANDSCAPE DEMOLITION PLAN & CIVIL DWG.
- DEMOLISH/ CUT & REMOVE EXISTING STRETCHER FACEBRICK COURSE & SOLDIER COURSES FROM FINISHED FLOOR UP TO UIS OF EXISTING BRICK LINTEL COURSE (ELEV. 106.600) & AROUND CORNER AS REQUIRED TO TIE INTO NEW CONSTRUCTION WALL. SEE SECTIONS & ELEVATIONS FOR MISC. DEMOLITION NOTES.
- REMOVE EXISTING GLAZING UNIT IN HOSE TOWER BELOW DEMOLISHED SOFFIT. PREPARE OPENING FOR NEW CONCRETE BLOCK.

ISSUED FOR CONSTRUCTION MMK 2015.03.26

No.	REVISION/DESCRIPTION	BY	DATE

SEAL

DRAWN: MMK
DATE: 2015.02.09

CHECKED: USER
DESIGNED: USER
APPROVED: APPROVAL

THE CITY OF WINNIPEG
PLANNING, PROPERTY AND
DEVELOPMENT DEPARTMENT
MUNICIPAL ACCOMMODATIONS DIVISION
3-65 GARRY STREET, R3C 4K4

PROJECT
WINNIPEG FIRE PARAMEDIC SERVICES
ADDITIONAL APPARATUS ROOM BAYS

603 REDWOOD AVENUE
SHEET TITLE
PARTIAL FLOOR PLAN & ELEVATIONS
DEMOLITION

SCALE	PROJECT No:	SHEET No:
AS SHOWN	2013-171-02	A1

DRAWING SHEET SIZE: A1 (841mm x 594mm) PLOT 1:1