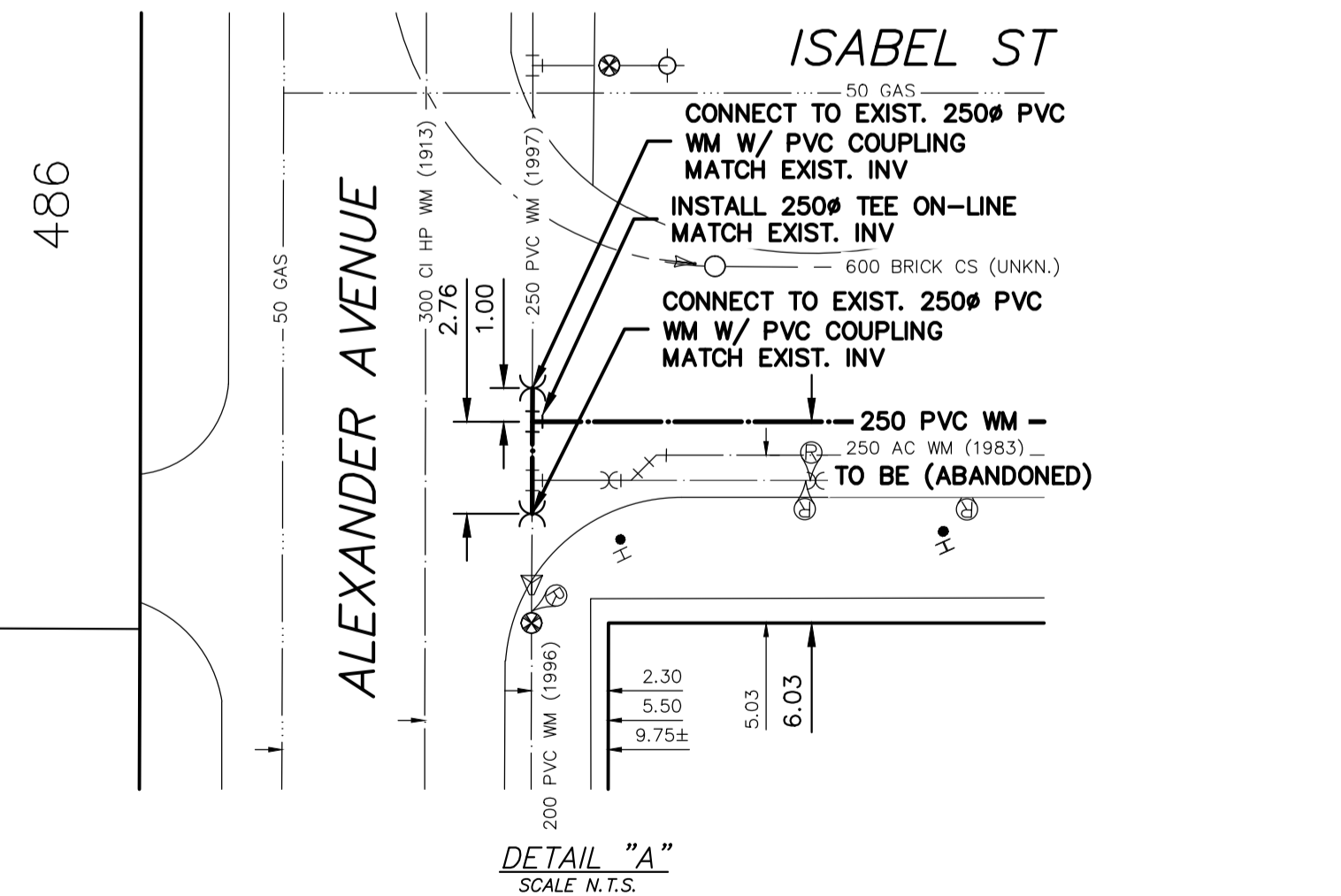


WATER SERVICE INFORMATION

ADDRESS	SIZE (mm) MATERIAL (STREET)	SIZE (mm) MATERIAL (PROP.)	SHORT & LONG MEASUREMENT	CORP. LOCATION	REMARKS
470 LOGAN AVE COMMERCIAL	25 COPPER	25 COPPER	63.5' SSL LOGAN	5' N OF S/C	-
470 LOGAN AVE SPRINKLER	300 UNKN	200 CI	43' SSL LOGAN	-	-

• SERVICES TO BE RENEWED TO R. ALL OTHERS TO BE RECONNECTED



NOTE: ALL VALVES TO BE INSTALLED COUNTERCLOCKWISE TO CLOSE

APEGM
Certificate of Authorization
WSP Canada Inc.
No. 5750 Date: _____

METRIC
WHOLE NUMBERS INDICATE MILLIMETRES
DECIMALIZED NUMBERS INDICATE METRES

WARNING

IF POWER EQUIPMENT OR EXPLOSIVES ARE TO BE USED FOR EXCAVATION ON THIS PROJECT THE CONTRACTOR MUST:

- 1) NOTIFY THE GAS COMPANY OF THE PROPOSED LOCATION OF EXCAVATION.
- 2) TAKE PRECAUTION TO AVOID DAMAGE TO GAS COMPANY INSTALLATIONS.

SEE PROVINCIAL REGULATION 210/72 FOR DETAILS

LOCATION APPROVED UNDERGROUND STRUCTURES

SUPV. U/G STRUCTURES COMMITTEE DATE _____

NOTE:
LOCATION OF UNDERGROUND STRUCTURES AS SHOWN ARE BASED ON THE BEST INFORMATION AVAILABLE BUT NO GUARANTEE IS GIVEN THAT ALL EXISTING UTILITIES ARE SHOWN OR THAT THE GIVEN LOCATIONS ARE EXACT. CONFIRMATION OF EXISTENCE AND EXACT LOCATION OF ALL SERVICES MUST BE OBTAINED FROM THE INDIVIDUAL UTILITIES BEFORE PROCEEDING WITH CONSTRUCTION.

B.M. ELEV. _____

CONSTRUCTION COMPLETION DATE: ---

NO.	REVISIONS	DATE	BY
2	BID OPPORTUNITY 332-2015	03/2015	K.G.
1	DESIGN REVIEW BY W&W	02/2015	K.G.

WSP 1600 BUFFALO PLACE
WINNIPEG, MB, R3T 6B8
PHONE: 204-477-6650
FAX: 204-474-2864
WWW.WSPGROUP.COM

DESIGNED BY: K.G. CHECKED BY: S.M.
DRAWN BY: K.G. APPROVED BY: I.McK.
SCALE: HORIZONTAL 1:250 VERTICAL 1:50
RELEASED FOR CONSTRUCTION: S. COURNOYER, P. ENG
DATE: 2015 03 30 DATE: 2015 03 27

ENGINEER'S SEAL
PROVINCE OF MANITOBA
REGISTERED PROFESSIONAL ENGINEER
I.G. McKINNON

CONSULTANT DRAWING NUMBER
151-00351-00-05

THE CITY OF WINNIPEG
WATER AND WASTE DEPARTMENT
ENGINEERING DIVISION

2015 WATERMAIN RENEWALS

ISABEL STREET
2.3M SNL OF ALEXANDER AVENUE TO
2.4M NSL OF LOGAN AVENUE

SHEET 1 OF 1
CITY DRAWING NUMBER
D-13975