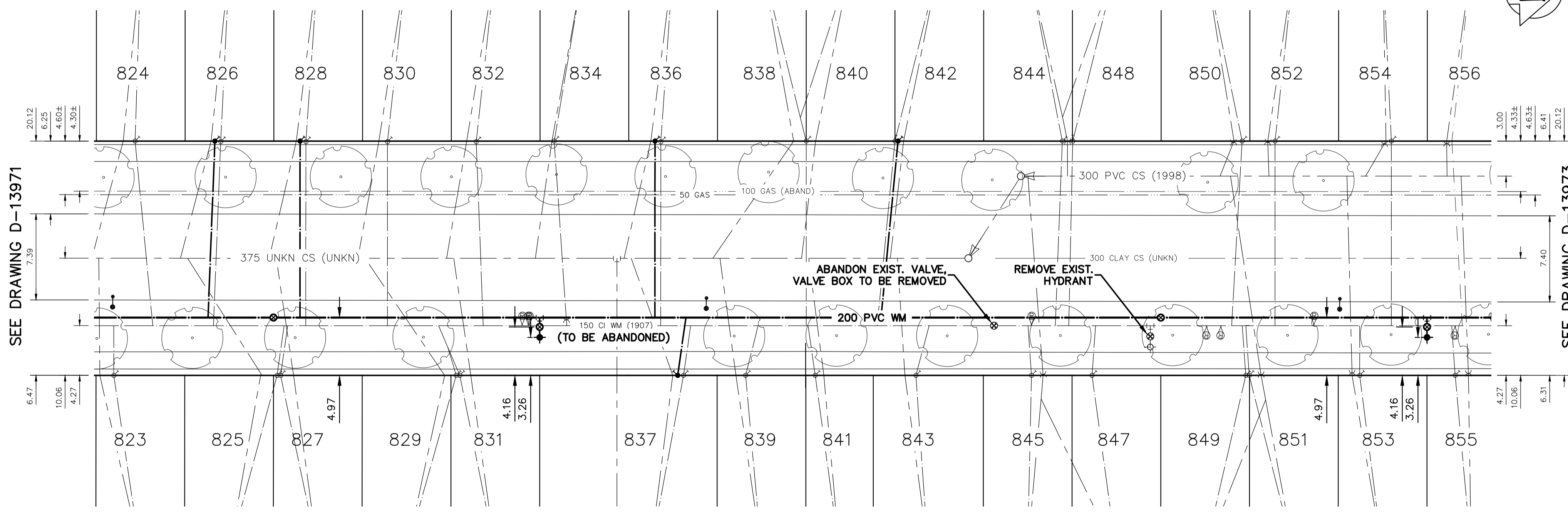


NOTE: CHAINAGES SHOWN ARE ALONG E. R.L. OF HOME ST

HOME STREET

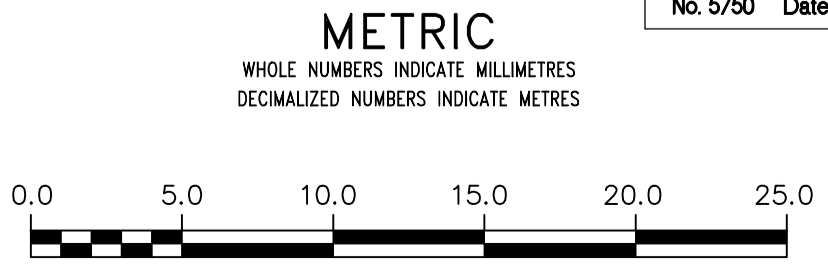


WATER SERVICE INFORMATION

ADDRESS	SIZE (mm) MATERIAL (STREET)	SIZE (mm) MATERIAL (PROP.)	SHORT & LONG MEASUREMENT	CORP. LOCATION	REMARKS
823 HOME ST	20	12	OPP SL HSE	OPP S/C	-
824 HOME ST	20	12	350'>NNL WELLINGTON	OPP S/C	-
825 HOME ST	20	12	6' NNL HSE	OPP S/C	-
826 HOME ST	20	12	351' NNL WELLINGTON	5' N OF S/C	-
827 HOME ST	20	12	6' NNL HSE	2' N OF S/C	-
828 HOME ST	12	12	7' NNL HSE	2' S OF S/C	-
829 HOME ST	20	12	380' NNL WELLINGTON	2' N OF S/C	FORMLY DBL W/ #825, NOW SINGLE
830 HOME ST	20	12	2' SSL HSE	2' N OF S/C	APR 8/00 TRACED /WZ
831 HOME ST	20	12	397' NNL WELLINGTON	OPP S/C	L.O.P. NOTIFIED BY 157 K. BREMNER APR 30/91
832 HOME ST	20	12	404' NNL WELLINGTON	OPP S/C	-
833 HOME ST	20	12	OPP SL #831	5' S OF S/C	-
834 HOME ST	20	12	UNKNWN	OPP S/C	-
835 HOME ST	20	12	4' NNL HSE	OPP S/C	-
836 HOME ST	20	12	427' NNL WELLINGTON	6' S OF S/C	-
837 HOME ST	20	12	1' NNL HSE	2' N OF S/C	-
838 HOME ST	20	12	UNKNWN	OPP S/C	-
839 HOME ST	20	12	2' NNL #832	2' N OF S/C	-
840 HOME ST	20	12	452' NNL WELLINGTON	1.2 N OF S/C	FORMLY DBL SVC W/ #832, 5/8
841 HOME ST	20	12	0.7' NNL HSE	OPP S/C	LEAD CPLG 1' FROM S/C
842 HOME ST	20	12	1.0 N/SPL	OPP S/C	JUL 21/01 IN FOR BLOW OUT
843 HOME ST	12	20	4' NNL CELLAR	OPP S/C	-
844 HOME ST	12	12	504' NNL WELLINGTON	2' N OF S/C	-
845 HOME ST	12	12	8' NNL HSE	OPP S/C	-
846 HOME ST	20	12	1' SSL HSE	2' N OF S/C	-
847 HOME ST	20	12	UNKNWN	OPP S/C	JUL 21/01 IN FOR BLOW OUT
848 HOME ST	20	12	2' NNL HSE	OPP S/C	DBL SVC W/ #840
849 HOME ST	20	12	114' S 1ST HYD N WELLINGTON	3' N OF S/C	-
850 HOME ST	20	12	UNKNWN	OPP S/C	-
851 HOME ST	20	12	3' NNL HSE	2' S OF S/C	-
852 HOME ST	20	12	UNKNWN	OPP S/C	-
853 HOME ST	12	12	152 SSL BLDG	1.52 S OF S/C	L.O.P. NOTIFIED BY 157 P. PENMAN MAY 15/90 5 DAYS NOTICE
854 HOME ST	20	20	10' NNL HSE	2' S OF S/C	-
855 HOME ST	20	12	UNKNWN	OPP S/C	-
856 HOME ST	20	12	0.81 NNL BLDG	0.61 S OF S/C	-
857 HOME ST	20	20	188.06 NNL WELLINGTON	0.3 N OF S/C	-
858 HOME ST	20	20	3.35 SSL BLDG	OPP S/C	FORMLY DBL SVC W/ #847
859 HOME ST	20	20	10.2 S 2ND HYD N WELLINGTON	0.3 N OF S/C	-
860 HOME ST	20	20	0.46 NNL BLDG	0.3 N OF S/C	-
861 HOME ST	20	20	5.03 S 2ND HYD N WELLINGTON	0.3 N OF S/C	-
862 HOME ST	25	12	0.91 SSL BLDG	0.3 S OF S/C	-
863 HOME ST	20	20	188.97 NNL WELLINGTON	0.3 S OF S/C	-
864 HOME ST	20	20	0.3 NNL BLDG	0.3 S OF S/C	FORMLY DBL SVC W/ #851
865 HOME ST	20	20	8.23 N 2ND HYD S NOTRE DAME	0.3 S OF S/C	-
866 HOME ST	20	20	0.3 S NNL BLDG	0.91 S OF S/C	REVERSE TAP
867 HOME ST	20	20	180.14 SSL NOTRE DAME	0.3 S OF S/C	-
868 HOME ST	20	20	1.68 SSL BLDG	0.3 S OF S/C	FORMLY DBL SVC W/ #849
869 HOME ST	20	20	8.53 N 2ND HYD S NOTRE DAME	OPP S/C	-
870 HOME ST	20	20	1.52 NNL BLDG	OPP S/C	-
871 HOME ST	20	20	UNKNWN	OPP S/C	-
872 HOME ST	20	20	1.68 NNL BLDG	OPP S/C	-
873 HOME ST	20	20	161.24 SSL NOTRE DAME	OPP S/C	-
874 HOME ST	20	20	3.35 SSL BLDG	OPP S/C	-
875 HOME ST	20	20	20.73 N 2ND HYD S NOTRE DAME	OPP S/C	-
876 HOME ST	20	20	1.83 NNL BLDG	0.3 S OF S/C	DUPLEX
877 HOME ST	20	20	153.01 SSL NOTRE DAME	UNKNWN	-
878 HOME ST	UNKNWN	UNKNWN	UNKNWN	UNKNWN	-
879 HOME ST	UNKNWN	UNKNWN	UNKNWN	UNKNWN	-

*SERVICES TO BE RENEWED TO R.L. ALL OTHERS TO BE RECONNECTED

NOTE: ALL VALVES TO BE INSTALLED COUNTERCLOCKWISE TO CLOSE



WARNING
 IF POWER EQUIPMENT OR EXPLOSIVES ARE TO BE USED FOR EXCAVATION ON THIS PROJECT THE CONTRACTOR MUST:
 1) NOTIFY THE GAS COMPANY OF THE PROPOSED LOCATION OF EXCAVATION.
 2) TAKE PRECAUTION TO AVOID DAMAGE TO GAS COMPANY INSTALLATIONS.
 SEE PROVINCIAL REGULATION 210/72 FOR DETAILS

LOCATION APPROVED UNDERGROUND STRUCTURES
 SUPV. U/G STRUCTURES COMMITTEE DATE
 NOTE:
 LOCATION OF UNDERGROUND STRUCTURES AS SHOWN ARE BASED ON THE BEST INFORMATION AVAILABLE BUT NO GUARANTEE IS GIVEN THAT ALL EXISTING UTILITIES ARE SHOWN OR THAT THE GIVEN LOCATIONS ARE EXACT. CONFIRMATION OF EXISTENCE AND EXACT LOCATION OF ALL UTILITIES MUST BE OBTAINED FROM THE INDIVIDUAL UTILITIES BEFORE PROCEEDING WITH CONSTRUCTION.

B.M. ELEV.	CONSTRUCTION COMPLETION DATE: --
--	--
--	--
--	--
2	BID OPPORTUNITY 332-2015 03/2015 K.G.
1	DESIGN REVIEW BY W&W 02/2015 K.G.
NO.	REVISIONS DATE BY

WSP 1600 BUFFALO PLACE WINNIPEG, MB, R3T 6B8 PHONE: 204-477-6650 FAX: 204-474-2864 WWW.WSPGROUP.COM

DESIGNED BY: K.G. CHECKED BY: S.M.
 DRAWN BY: K.G. APPROVED BY: I.McK.
 SCALE: HORIZONTAL 1:250 VERTICAL 1:50
 RELEASED FOR CONSTRUCTION: S. COURNOYER, P. ENG
 DATE: 2015 03 30 DATE: 2015 03 27

ENGINEER'S SEAL
 PROVINCE OF MANITOBA
 I.G. McKINNON
 REGISTERED PROFESSIONAL ENGINEER
 CONSULTANT DRAWING NUMBER: 151-00351-00-02

THE CITY OF WINNIPEG
 WATER AND WASTE DEPARTMENT
 ENGINEERING DIVISION
 2015 WATERMAIN RENEWALS
 HOME STREET
 105M>NNL OF WELLINGTON AVENUE TO 149.9M>SSL OF NOTRE DAME AVENUE
 SHEET 2 OF 4
 CITY DRAWING NUMBER: D-13972