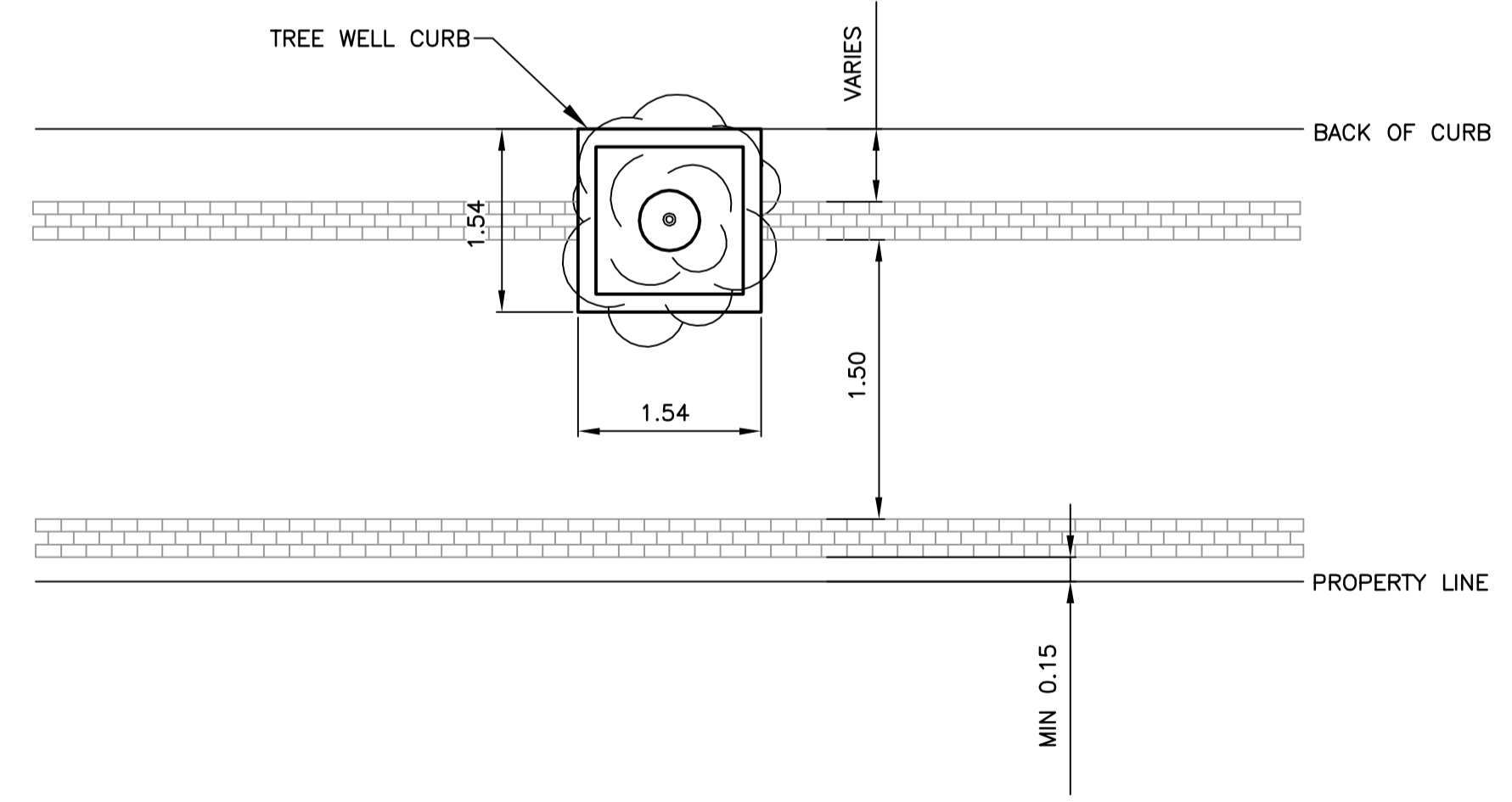


TYPICAL TREE WELL AT EXISTING TREE - SECTION VIEW
N.T.S.



TYPICAL TREE WELL AT EXISTING TREE - PLAN VIEW
N.T.S.

- CONSTRUCTION NOTES**
- 1) CURB REPLACEMENT AS DIRECTED BY THE CONTRACT ADMINISTRATOR
 - 2) ALL STREET RADIUS CURB UNDER 15M RADIUS SHALL BE REPLACED AS MODIFIED OR AS DIRECTED BY THE CONTRACT ADMINISTRATOR
 - 3) PAVEMENT REPAIRS SHOWN ARE ONLY A REPRESENTATIVE SAMPLE OF THE TENDERED QUANTITIES
 - 4) ASPHALT TIE-INS ON APPROACHES TO BE DETERMINED IN THE FIELD BY THE CONTRACT ADMINISTRATOR
 - 5) ALL BULLNOSES TO HAVE SLOPED FACE.

WARNING

IF POWER EQUIPMENT OR EXPLOSIVES ARE TO BE USED FOR EXCAVATION ON THIS PROJECT THE CONTRACTOR MUST:

- 1) OBTAIN CLEARANCE FROM THE GAS UTILITY PRIOR TO EXCAVATION.
- 2) TAKE PRECAUTION TO AVOID DAMAGE TO GAS UTILITY INSTALLATIONS.

SEE PROVINCIAL REGULATION 210/72 FOR DETAILS

PRELIMINARY
NOT TO BE USED FOR CONSTRUCTION

BID OPPORTUNITY NO. 323-2015

⊕	HYDRANT	◆	---	LDS/WWS	---	⊕	SURVEY BAR	◆
⊗	VALVE	●	---	WATERMAIN	---	⊕	GEODETIC BENCH MARK	◆
⊙	CURB STOP	●	---	GAS	---			
○	O.L.S.	●	---	HYDRO	---			
○	MANHOLE	●	---	M.T.S.	---			
□	CATCH BASIN	■	---	TRAFFIC SIGNALS	---			
△	CURB INLET	▲	---	STEAM HEAT	---			
☆	HYDRO POLE	★	---	CURB RENEWAL	---			
○	TRAFFIC SIGNAL POLE	●	---	RAMP CURB	---			
---	CONCRETE	---	---	ELEVATIONS	[231.000]			
---	CONCRETE SIDEWALK	---	---	PROPERTY LINE	---			
---	EXISTING	---	---	LEGEND - PLAN	---	---	---	---
---	LEGEND - PLAN	---	---	PROPOSED	---	---	---	---

LOCATION APPROVED UNDERGROUND STRUCTURES

SUPR. U/G STRUCTURES COMMITTEE DATE

NOTE:
LOCATION OF UNDERGROUND STRUCTURES AS SHOWN ARE BASED ON THE BEST INFORMATION AVAILABLE. BUT NO GUARANTEE IS GIVEN THAT ALL EXISTING UTILITIES ARE SHOWN OR THAT THE GIVEN LOCATIONS ARE EXACT. CONFIRMATION OF EXISTENCE AND EXACT LOCATION OF ALL SERVICES MUST BE OBTAINED FROM THE INDIVIDUAL UTILITIES BEFORE PROCEEDING WITH CONSTRUCTION.

B.M. ELEV.	GBM 35-037	232.542
NO.	REVISIONS	DATE BY

METRIC
WHOLE NUMBERS INDICATE MILLIMETRES
DECIMALIZED NUMBERS INDICATE METRES

ENGINEERING DIVISION
TECHNOLOGY SERVICES BRANCH
106 - 1155 PACIFIC AVE

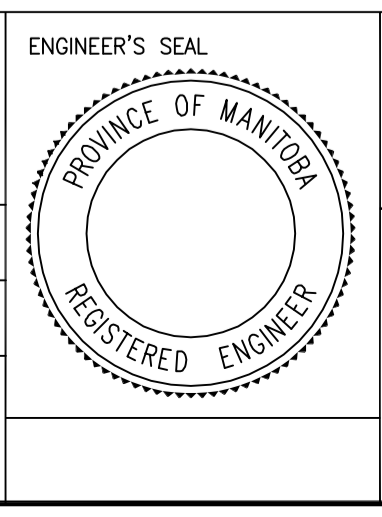
DESIGNED BY: _____ CHECKED BY: R.W.

DRAWN BY: M.M./C.R.H APPROVED BY: _____

HOR. SCALE: 1 : 150

VERTICAL: _____

DATE: 2015/06/09



THE CITY OF WINNIPEG
PUBLIC WORKS DEPARTMENT

McDERMOT AVENUE
FROM PRINCESS STREET TO KING STREET
SIDEWALK RENEWAL AND ASSOCIATED WORKS

CITY DRAWING NUMBER: SE-15-28
SHEET 2 OF 2

2