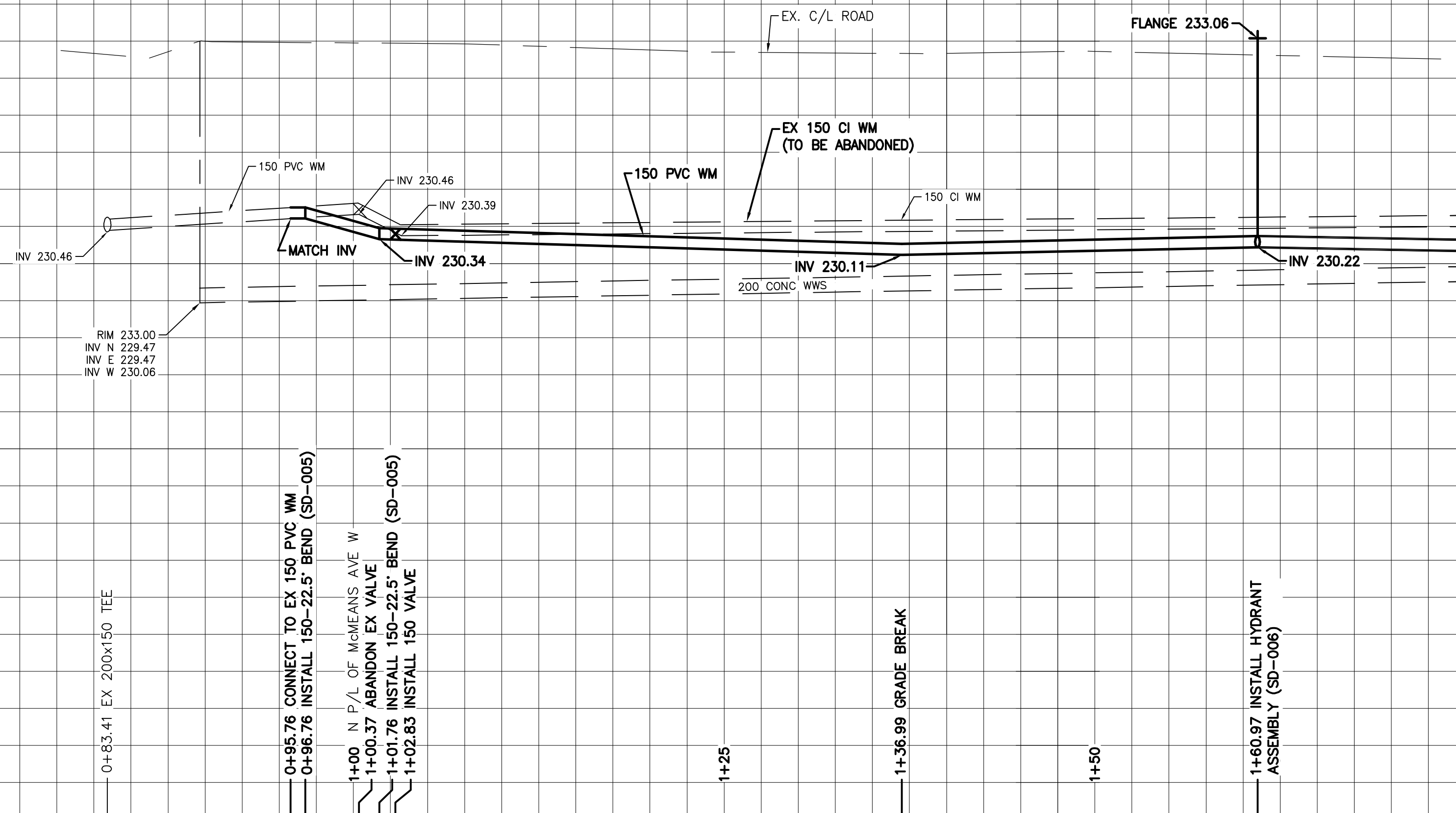


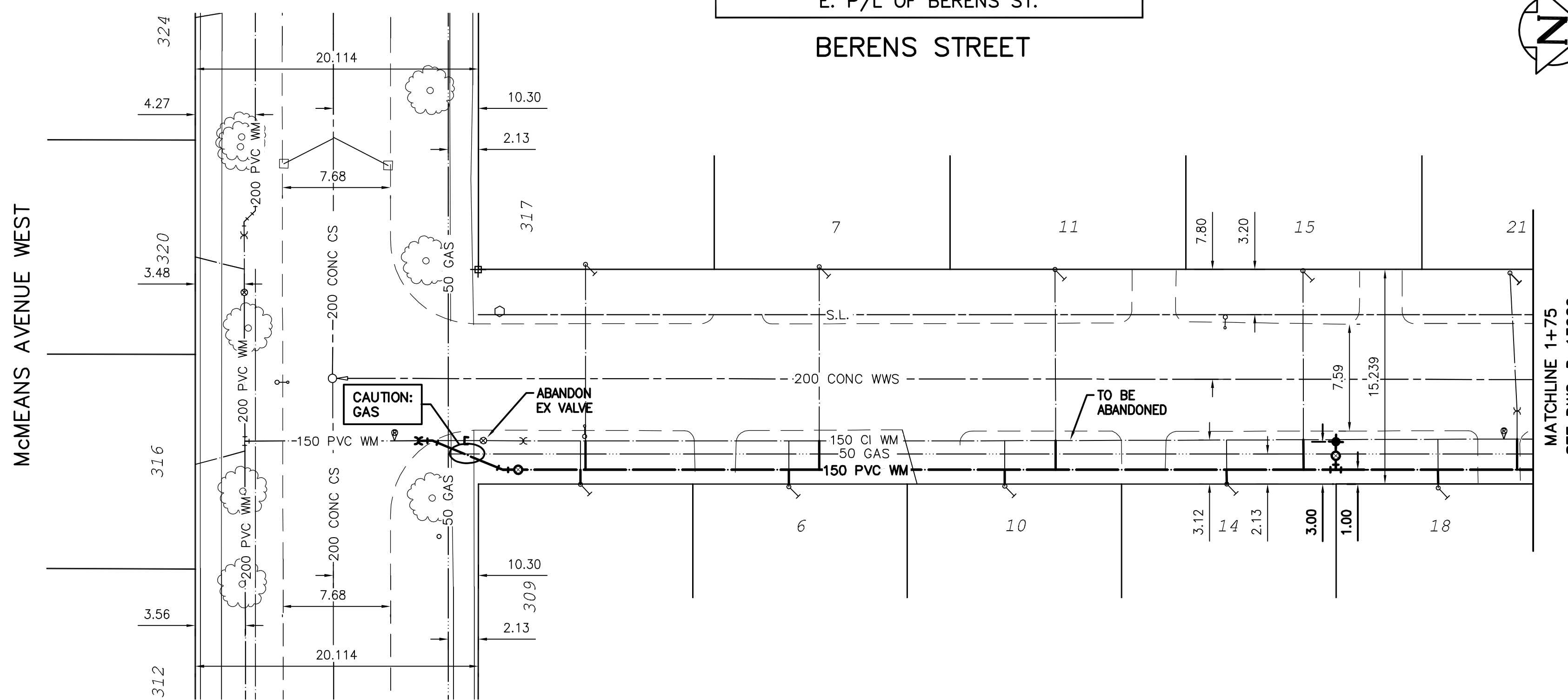
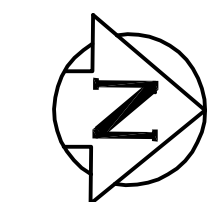
234.0  
233.0  
232.0  
231.0  
230.0  
229.0  
228.0  
227.0  
226.0



234.0  
233.0  
232.0  
231.0  
230.0  
229.0  
228.0  
227.0  
226.0

NOTE: CHAINAGES SHOWN ARE ALONG E. P/L OF BERENS ST.

BERENS STREET

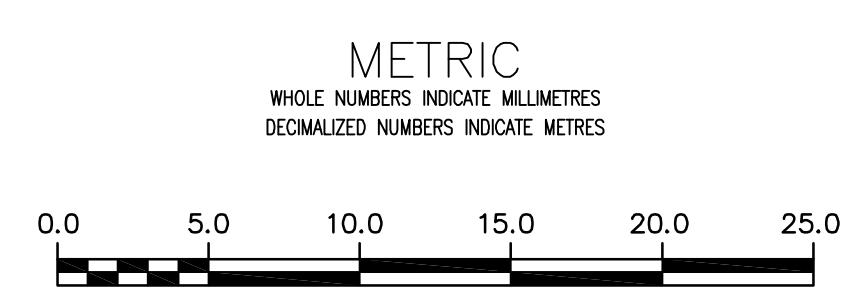
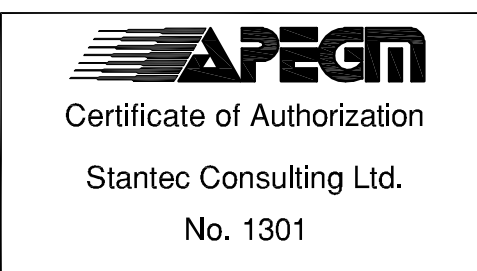


WATER SERVICE INFORMATION

| ADDRESS           | SIZE (mm) MATERIAL (STREET) | SIZE (mm) MATERIAL (PROP.) | SHORT & LONG MEASUREMENT | CORP. LOCATION | REMARKS           |
|-------------------|-----------------------------|----------------------------|--------------------------|----------------|-------------------|
| 309 McMEANS AVE W | -                           | 20                         | 2.59 NSL OF HSE          | -              | RECONNECT SERVICE |
| RESIDENTIAL       | -                           | CU                         | 6.04 FR SIDE OF HSE      | -              | RECONNECT SERVICE |
| 317 McMEANS AVE W | -                           | 20                         | 0.98 NSL HSE             | -              | RECONNECT SERVICE |
| RESIDENTIAL       | -                           | CU                         | 6.22 FR SIDE OF HSE      | -              | RECONNECT SERVICE |
| 6 BERENS ST       | -                           | 20                         | 3.60 NSL HSE             | -              | RECONNECT SERVICE |
| RESIDENTIAL       | -                           | CU                         | -                        | -              | -                 |
| 7 BERENS ST       | -                           | 20                         | 3.47 NSL HSE             | -              | RECONNECT SERVICE |
| RESIDENTIAL       | -                           | CU                         | 8.87 FR FRONT HSE        | -              | RECONNECT SERVICE |
| 10 BERENS ST      | -                           | 20                         | 3.11 NSL HSE             | -              | RECONNECT SERVICE |
| RESIDENTIAL       | -                           | CU                         | 5.82 FR FRONT HSE        | -              | RECONNECT SERVICE |
| 11 BERENS ST      | -                           | 20                         | 5.47 NSL HSE             | -              | RECONNECT SERVICE |
| RESIDENTIAL       | -                           | CU                         | -                        | -              | -                 |
| 14 BERENS ST      | -                           | 20                         | 3.69 NSL HSE             | -              | RECONNECT SERVICE |
| RESIDENTIAL       | -                           | CU                         | -                        | -              | -                 |
| 15 BERENS ST      | -                           | 20                         | 3.90 NSL HSE             | -              | RECONNECT SERVICE |
| RESIDENTIAL       | -                           | CU                         | -                        | -              | -                 |
| 18 BERENS ST      | -                           | 20                         | 2.47 NSL HSE             | -              | RECONNECT SERVICE |
| RESIDENTIAL       | -                           | CU                         | -                        | -              | -                 |
| 21 BERENS ST      | 20                          | 20                         | 3.0 NSBL                 | OPP S/C        | RECONNECT SERVICE |
| RESIDENTIAL       | CU                          | CU                         | 6.8 NSLL                 | -              | -                 |

\* SERVICES TO BE RENEWED TO R, ALL OTHERS TO BE RECONNECTED

NOTE: ALL GATE VALVES TO BE INSTALLED CLOCKWISE TO CLOSE



**WARNING**  
IF POWER EQUIPMENT OR EXPLOSIVES ARE TO BE USED FOR EXCAVATION ON THIS PROJECT THE CONTRACTOR MUST:  
1) NOTIFY THE GAS COMPANY OF THE PROPOSED LOCATION OF EXCAVATION.  
2) TAKE PRECAUTION TO AVOID DAMAGE TO GAS COMPANY INSTALLATIONS.  
SEE PROVINCIAL REGULATION 210/72 FOR DETAILS

**LOCATION APPROVED**  
UNDERGROUND STRUCTURES  
SUPV. U/G STRUCTURES COMMITTEE DATE  
NOTE:  
LOCATION OF UNDERGROUND STRUCTURES AS SHOWN ARE BASED ON THE BEST INFORMATION AVAILABLE BUT NO GUARANTEE IS GIVEN THAT ALL EXISTING UTILITIES ARE SHOWN OR THAT THE GIVEN LOCATIONS ARE EXACT. CONFIRMATION OF EXISTENCE AND EXACT LOCATION OF ALL SERVICES MUST BE OBTAINED FROM THE INDIVIDUAL UTILITIES BEFORE PROCEEDING WITH CONSTRUCTION.

B.M. 10-012 N.W. Cor. McMeans Ave. W. & McMeans Bay, 19 mm dia. ELEV. 232.469m x 7.6 m I.B. in Valve Box, 3.0 m W. of W.L. of McMeans Bay & 3.0 m N. of N.L. of McMeans Ave. W.

CONSTRUCTION COMPLETION DATE: YYYY MM DD

| NO. | ISSUED FOR TENDER | DATE     | BY   |
|-----|-------------------|----------|------|
| 0   | ISSUED FOR TENDER | 15/03/24 | R.S. |

DESIGNED BY J.H. CHECKED BY R.S.  
DRAWN BY J.H. APPROVED BY R.S.  
SCALE: HORIZONTAL 1:250 VERTICAL 1:50  
DATE 2015 03 24 PLOT DATE: 2015 03 24

ENGINEER'S SEAL  
CONSULTANT DRAWING NUMBER  
C-213

**THE CITY OF WINNIPEG**  
WATER AND WASTE DEPARTMENT  
ENGINEERING DIVISION  
2015 WATERMAIN RENEWALS  
CONTRACT 1  
BERENS STREET  
MCMEANS AVENUE WEST TO  
75>NNL OF MCMEANS AVE W

SHEET 14 OF 18  
CITY DRAWING NUMBER  
D-13928