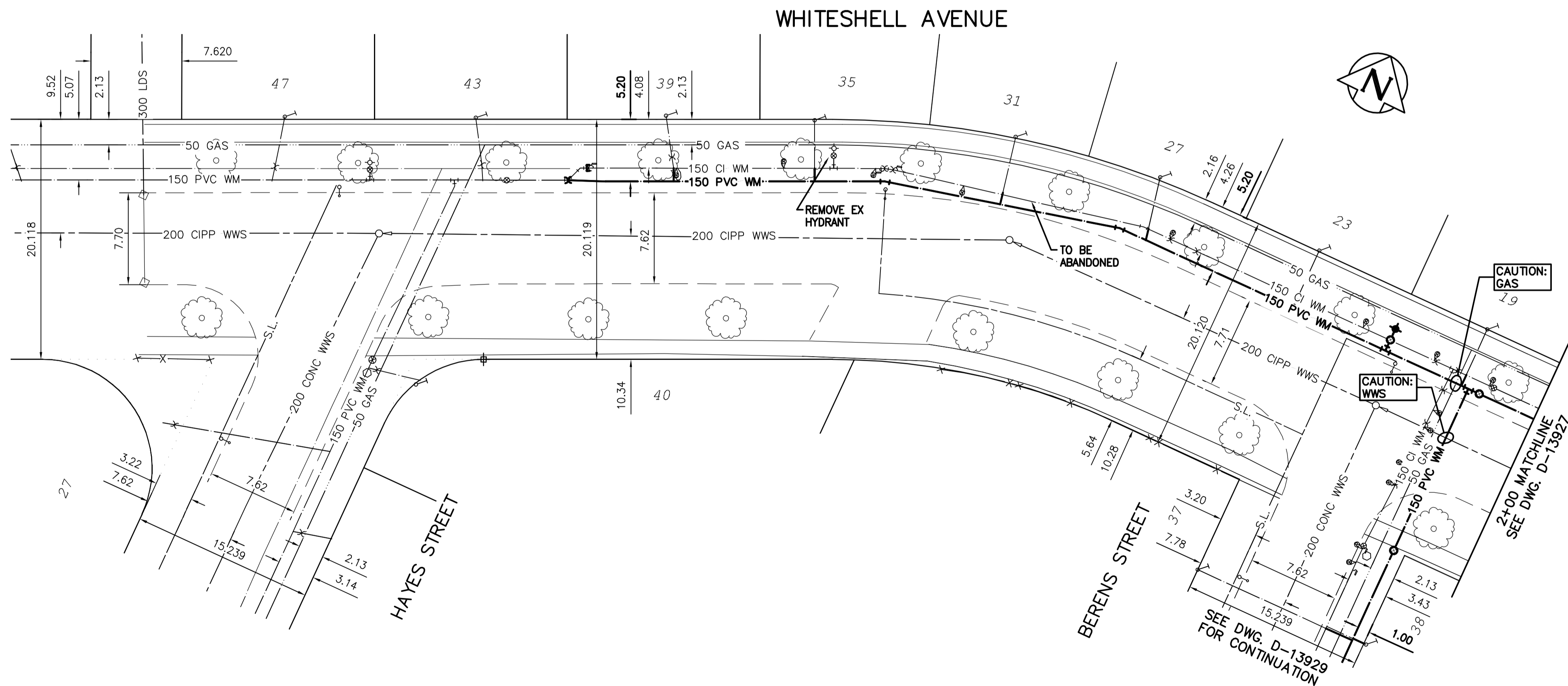


NOTE: CHAINAGES SHOWN ARE ALONG N. P/L OF WHITESHELL AVE.



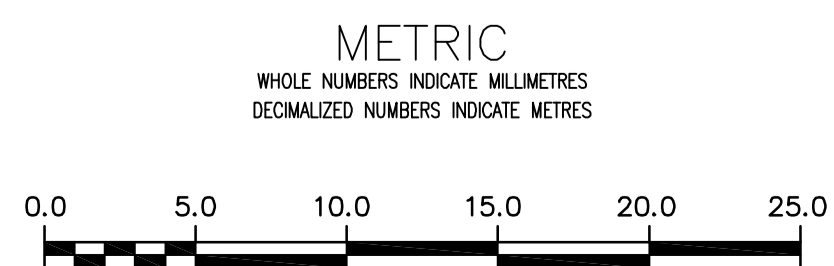
WATER SERVICE INFORMATION

ADDRESS	SIZE (mm) MATERIAL (STREET)	SIZE (mm) MATERIAL (PROP.)	SHORT & LONG MEASUREMENT	CORP. LOCATION	REMARKS
43 WHITESHELL AV RESIDENTIAL	-	20 CU	-	-	-
40 WHITESHELL AV RESIDENTIAL	-	20 CU	-	-	RECONNECT SERVICE SERVICED OFF HAYES ST
39 WHITESHELL AV RESIDENTIAL	-	-	7.0 W ELL	-	RECONNECT SERVICE
35 WHITESHELL AV RESIDENTIAL	-	-	2.90 FROM HSE	-	RECONNECT SERVICE
27 WHITESHELL AV RESIDENTIAL	-	-	9.14 FROM HSE	-	RECONNECT SERVICE
31 WHITESHELL AV RESIDENTIAL	-	-	5.46 WEL HSE	-	RECONNECT SERVICE
23 WHITESHELL AV RESIDENTIAL	-	-	9.60 FROM HSE	-	RECONNECT SERVICE
27 WHITESHELL AV RESIDENTIAL	-	-	3.20 EWL HSE	-	RECONNECT SERVICE
19 WHITESHELL AV RESIDENTIAL	-	-	8.38 FROM HSE	-	RECONNECT SERVICE
23 WHITESHELL AV RESIDENTIAL	-	-	6.40 WEL HSE	-	RECONNECT SERVICE
37 BERENS ST RESIDENTIAL	-	-	8.99 FR. HSE	-	RECONNECT SERVICE
19 WHITESHELL AV RESIDENTIAL	-	-	4.88 EWL HSE	-	RECONNECT SERVICE
37 BERENS ST RESIDENTIAL	-	-	8.38 FROM HSE	-	RECONNECT SERVICE
38 BERENS ST RESIDENTIAL	-	-	-	-	RECONNECT SERVICE

* SERVICES TO BE RENEWED TO R, ALL OTHERS TO BE RECONNECTED

NOTE: ALL GATE VALVES TO BE INSTALLED CLOCKWISE TO CLOSE

APEGN
Certificate of Authorization
Stantec Consulting Ltd.
No. 1301



WARNING
IF POWER EQUIPMENT OR EXPLOSIVES ARE TO BE USED FOR EXCAVATION ON THIS PROJECT THE CONTRACTOR MUST:
1) NOTIFY THE GAS COMPANY OF THE PROPOSED LOCATION OF EXCAVATION.
2) TAKE PRECAUTION TO AVOID DAMAGE TO GAS COMPANY INSTALLATIONS.
SEE PROVINCIAL REGULATION 21072 FOR DETAILS

LOCATION APPROVED UNDERGROUND STRUCTURES
SUPV. U/G STRUCTURES COMMITTEE DATE
NOTE:
LOCATION OF UNDERGROUND STRUCTURES AS SHOWN ARE BASED ON THE BEST INFORMATION AVAILABLE BUT NO GUARANTEE IS GIVEN THAT ALL EXISTING UTILITIES ARE SHOWN OR THAT THE GIVEN LOCATIONS ARE EXACT. CONFIRMATION OF EXISTENCE AND EXACT LOCATION OF ALL SERVICES MUST BE OBTAINED FROM THE INDIVIDUAL UTILITIES BEFORE PROCEEDING WITH CONSTRUCTION.

B.M. 10-012 ELEV. 232.469m	N.W. Cor. McMeans Ave. W. & McMeans Bay, 19 mm dia. x 7.6 m I.B. in Valve Box, 3.0 m W. of W.L. of McMeans Bay & 3.0 m N. of N.L. of McMeans Ave. W.		
CONSTRUCTION COMPLETION DATE: YYYY MM DD			
0	ISSUED FOR TENDER	15/03/24	R.S.
NO.	REVISIONS	DATE	BY

Stantec

DESIGNED BY	J.H.	CHECKED BY	R.S.
DRAWN BY	J.H.	APPROVED BY	R.S.
SCALE:	HORIZONTAL 1:250 VERTICAL 1:50		
DATE	2015 03 24	RELEASER FOR CONSTRUCTION	DATE

ENGINEER'S SEAL
CONSULTANT DRAWING NUMBER
C-211

THE CITY OF WINNIPEG
WATER AND WASTE DEPARTMENT
ENGINEERING DIVISION

2015 WATERMAIN RENEWALS
CONTRACT 1
WHITESHELL AVENUE
HAYES STREET TO
4m EEL BERENS STREET

SHEET 12 OF 18
CITY DRAWING NUMBER
D-13926