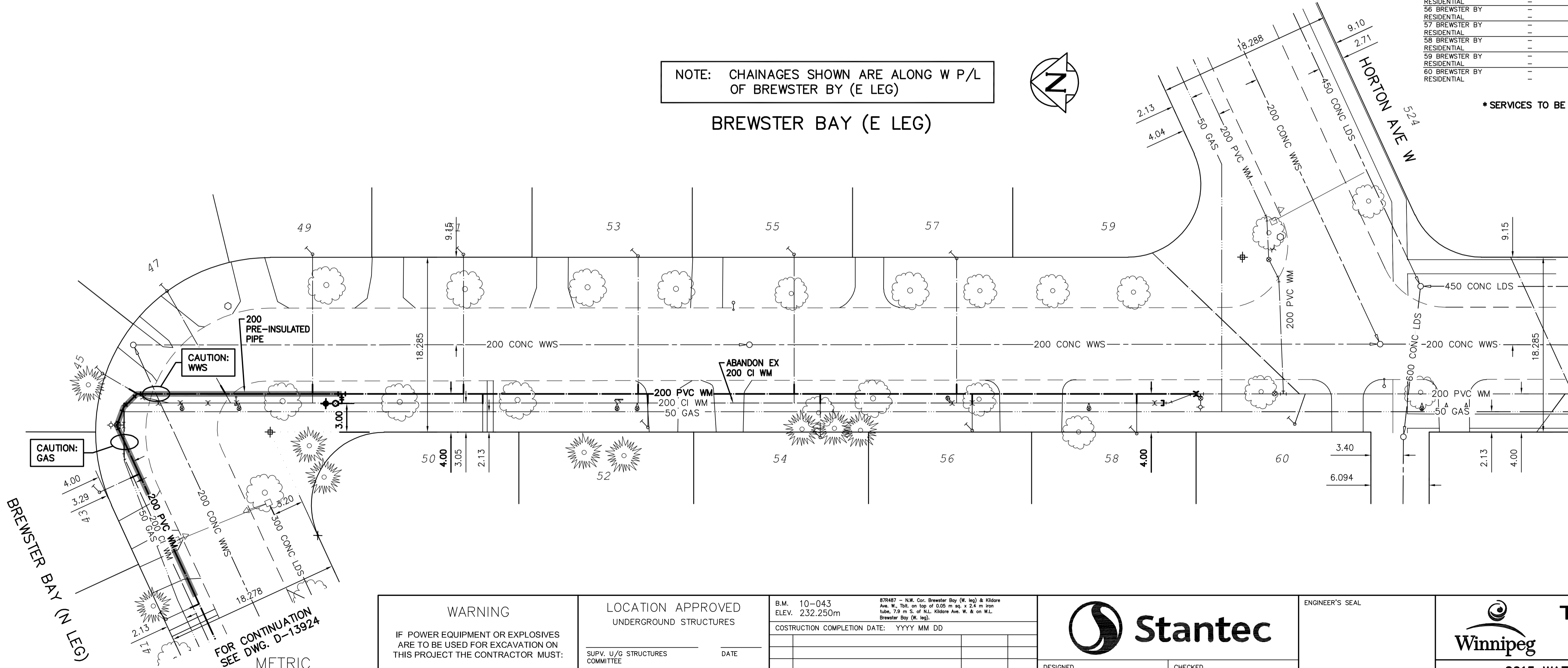
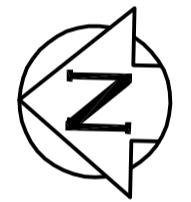


WATER SERVICE INFORMATION					
ADDRESS	SIZE (mm) MATERIAL (STREET)	SIZE (mm) MATERIAL (PROP.)	SHORT & LONG MEASUREMENT	CORP. LOCATION	REMARKS
49 BREWSTER BY RESIDENTIAL	-	-	-	-	RECONNECT SERVICE
50 BREWSTER BY RESIDENTIAL	-	20	3.96 SSL HSE	-	RECONNECT SERVICE
51 BREWSTER BY RESIDENTIAL	-	-	2.74 FROM HSE FRONT	-	RECONNECT SERVICE
52 BREWSTER BY RESIDENTIAL	-	20	0.61 SSL HSE	-	RECONNECT SERVICE
53 BREWSTER BY RESIDENTIAL	-	CU	9.45 FROM HSE FRONT	-	RECONNECT SERVICE
54 BREWSTER BY RESIDENTIAL	-	20	2.90 NSL HSE	-	RECONNECT SERVICE
55 BREWSTER BY RESIDENTIAL	-	CU	8.08 FROM HSE FRNT	-	RECONNECT SERVICE
56 BREWSTER BY RESIDENTIAL	-	-	1.98 NSL HSE	-	RECONNECT SERVICE
57 BREWSTER BY RESIDENTIAL	-	-	10.67 FROM HSE FRONT	-	RECONNECT SERVICE
58 BREWSTER BY RESIDENTIAL	-	20	4.57 NSL HSE	-	RECONNECT SERVICE
59 BREWSTER BY RESIDENTIAL	-	CU	9.75 FROM HSE FRONT	-	RECONNECT SERVICE
60 BREWSTER BY RESIDENTIAL	-	-	1.22 NSL HSE	47.40 N/VLV OPP #64 BREWSTER	-
	-	-	14.33 FROM HSE FRONT	-	-

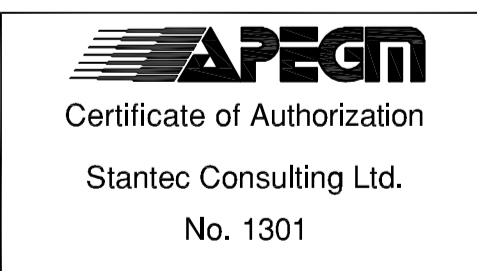
\* SERVICES TO BE RENEWED TO R. ALL OTHERS TO BE RECONNECTED

NOTE: CHAINAGES SHOWN ARE ALONG W P/L OF BREWSTER BY (E LEG)

BREWSTER BAY (E LEG)



NOTE: ALL GATE VALVES TO BE INSTALLED CLOCKWISE TO CLOSE



**WARNING**  
IF POWER EQUIPMENT OR EXPLOSIVES ARE TO BE USED FOR EXCAVATION ON THIS PROJECT THE CONTRACTOR MUST:  
1) NOTIFY THE GAS COMPANY OF THE PROPOSED LOCATION OF EXCAVATION.  
2) TAKE PRECAUTION TO AVOID DAMAGE TO GAS COMPANY INSTALLATIONS.  
SEE PROVINCIAL REGULATION 2107/2 FOR DETAILS

**LOCATION APPROVED**  
UNDERGROUND STRUCTURES  
SUPV. U/G STRUCTURES COMMITTEE DATE  
NOTE:  
LOCATION OF UNDERGROUND STRUCTURES AS SHOWN ARE BASED ON THE BEST INFORMATION AVAILABLE BUT NO GUARANTEE IS GIVEN THAT ALL EXISTING UTILITIES ARE SHOWN OR THAT THE GIVEN LOCATIONS ARE EXACT. CONFIRMATION OF EXISTENCE AND EXACT LOCATION OF ALL SERVICES MUST BE OBTAINED FROM THE INDIVIDUAL UTILITIES BEFORE PROCEEDING WITH CONSTRUCTION.

B.M. 10-043 ELEV. 232.250m	879457 - N.W. Cor. Brewster Bay (E Leg) & Horton Ave. W. The top of 0.05 m dia. x 2.4 m iron tube, 7.9 m S. of N.L. Horton Ave. W. & on W.L. Brewster Bay (E Leg).
CONSTRUCTION COMPLETION DATE: YYYY MM DD	
ISSUED FOR TENDER	15/03/24 R.S.
NO.	REVISIONS
	DATE
	BY

DESIGNED BY: J.H. CHECKED BY: R.S.  
DRAWN BY: J.H. APPROVED BY: R.S.  
SCALE: HORIZONTAL 1:250 VERTICAL 1:50  
DATE: 2015 03 24  
PLOT DATE: 2015 03 24

ENGINEER'S SEAL  
CONSULTANT DRAWING NUMBER: C-210

**THE CITY OF WINNIPEG**  
WATER AND WASTE DEPARTMENT  
ENGINEERING DIVISION  
2015 WATERMAIN RENEWALS  
CONTRACT 1  
**BREWSTER BAY (E LEG)**  
BREWSTER BAY (N LEG) TO HORTON AVENUE  
SHEET 11 OF 18  
CITY DRAWING NUMBER: D-13925