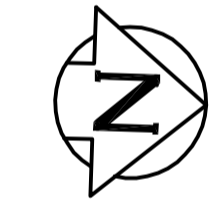
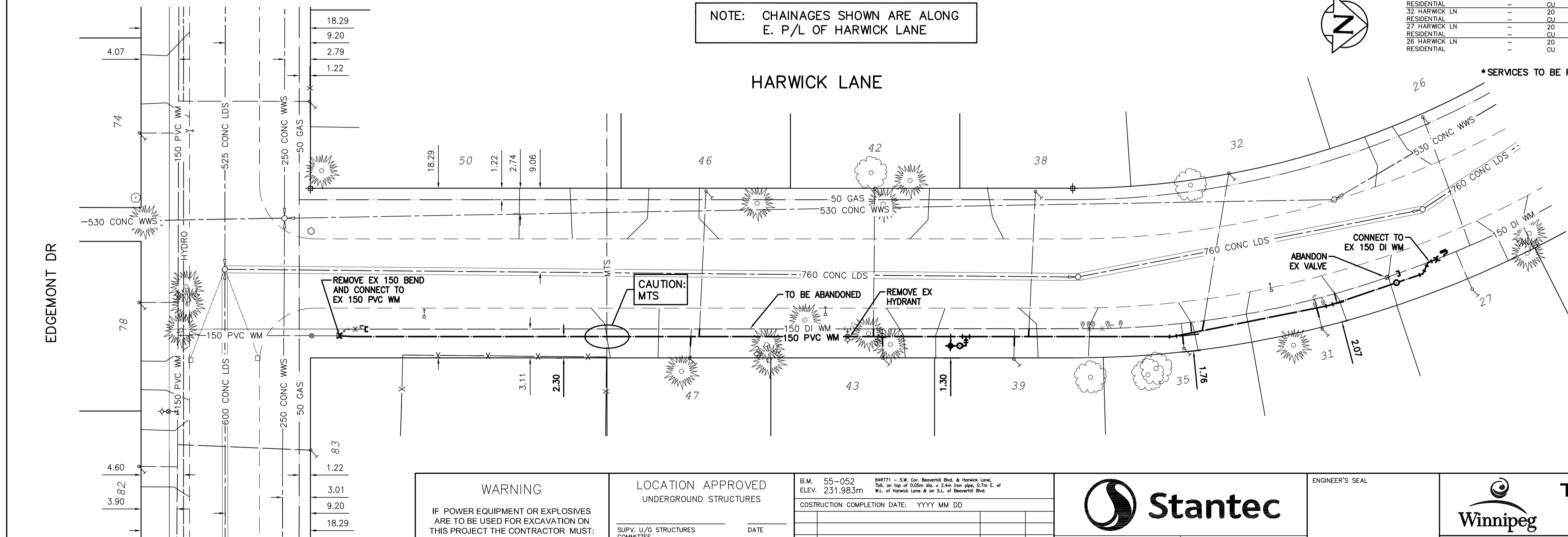


WATER SERVICE INFORMATION					
ADDRESS	SIZE (mm) MATERIAL (STREET)	SIZE (mm) MATERIAL (PROP.)	SHORT & LONG MEASUREMENT	CORP. LOCATION	REMARKS
83 EDMONT DR	20 CU	20 CU	5.18 RL CR HSE	0.30 E OF S/C	SERVICE OFF EDMONT
50 HARWICK LN	20 CU	20 CU	10.67 EW HYD		SERVICE OFF EDMONT
47 HARWICK LN	20 CU	20 CU	18.5 R L CR HSE		RECONNECT SERVICE
46 HARWICK LN	20 CU	20 CU	22.6 EW HSE		RECONNECT SERVICE
43 HARWICK LN	20 CU	20 CU	5.21 SOUTH OF HYDRANT		RECONNECT SERVICE
42 HARWICK LN	20 CU	20 CU	26 WEL HSE		RECONNECT SERVICE
39 HARWICK LN	20 CU	20 CU	57 WEL HYDRANT		RECONNECT SERVICE
35 HARWICK LN	20 CU	20 CU	2.82 WEL HSE		RECONNECT SERVICE
27 HARWICK LN	20 CU	20 CU	15 WEL HYDRANT		RECONNECT SERVICE
26 HARWICK LN	20 CU	20 CU	6.28 WEL HSE		RECONNECT SERVICE
25 HARWICK LN	20 CU	20 CU	3.05 EW HYDRANT		RECONNECT SERVICE
24 HARWICK LN	20 CU	20 CU	7.16 LR CR HSE		RECONNECT SERVICE
23 HARWICK LN	20 CU	20 CU	19.51 WEL HYDRANT		RECONNECT SERVICE
22 HARWICK LN	20 CU	20 CU	6.40 RL CR HSE		RECONNECT SERVICE
21 HARWICK LN	20 CU	20 CU	35.66 EW HYDRANT		RECONNECT SERVICE
20 HARWICK LN	20 CU	20 CU	3.05 LR CR HSE		RECONNECT SERVICE
19 HARWICK LN	20 CU	20 CU	41.15 WEL HYDRANT		RECONNECT SERVICE
18 HARWICK LN	20 CU	20 CU	7.92 RL CR HSE		RECONNECT SERVICE
17 HARWICK LN	20 CU	20 CU	67.97 EW HYDRANT		RECONNECT SERVICE
16 HARWICK LN	20 CU	20 CU	9.45 WEL HSE		RECONNECT SERVICE
15 HARWICK LN	20 CU	20 CU	25.6 WEL HYDRANT		RECONNECT SERVICE

NOTE: CHAINAGES SHOWN ARE ALONG E. P/L OF HARWICK LANE



*SERVICES TO BE RENEWED TO R, ALL OTHERS TO BE RECONNECTED



NOTE: ALL GATE VALVES TO BE INSTALLED CLOCKWISE TO CLOSE



WARNING
IF POWER EQUIPMENT OR EXPLOSIVES ARE TO BE USED FOR EXCAVATION ON THIS PROJECT THE CONTRACTOR MUST:
1) NOTIFY THE GAS COMPANY OF THE PROPOSED LOCATION OF EXCAVATION.
2) TAKE PRECAUTION TO AVOID DAMAGE TO GAS COMPANY INSTALLATIONS.
SEE PROVINCIAL REGULATION 210/72 FOR DETAILS

LOCATION APPROVED
UNDERGROUND STRUCTURES
SUPV. U/G STRUCTURES COMMITTEE DATE
NOTE:
LOCATION OF UNDERGROUND STRUCTURES AS SHOWN ARE BASED ON THE BEST INFORMATION AVAILABLE BUT NO GUARANTEE IS GIVEN THAT ALL EXISTING UTILITIES ARE SHOWN OR THAT THE GIVEN LOCATIONS ARE EXACT. CONFIRMATION OF EXISTENCE AND EXACT LOCATION OF ALL UTILITIES MUST BE OBTAINED FROM THE INDIVIDUAL UTILITIES BEFORE PROCEEDING WITH CONSTRUCTION.

B.M. 55-052 ELEV. 231.983m		847771 - S.W. Cor. Beverhill Blvd. & Harwick Lane, Dist. on top of 0.25m dia. x 2.4m iron pipe, 0.7m E. of W. of Harwick Lane & on S.E. of Beverhill Blvd.	
CONSTRUCTION COMPLETION DATE: YYYY MM DD			
0	ISSUED FOR TENDER	15/03/24	R.S.
NO.	REVISIONS	DATE	BY

DESIGNED BY: J.H. CHECKED BY: R.S.
DRAWN BY: J.H. APPROVED BY: R.S.
SCALE: HORIZONTAL 1:250, VERTICAL 1:50
DATE: 2015 03 24
PLOT DATE: 2015 03 24

ENGINEER'S SEAL
CONSULTANT DRAWING NUMBER: C-201

THE CITY OF WINNIPEG
WATER AND WASTE DEPARTMENT
ENGINEERING DIVISION
2015 WATERMAIN RENEWALS
CONTRACT 1
HARWICK LANE
EDMONT DRIVE TO
123>NNL OF EDMONT DRIVE

SHEET 2 OF 18
CITY DRAWING NUMBER: D-13916