

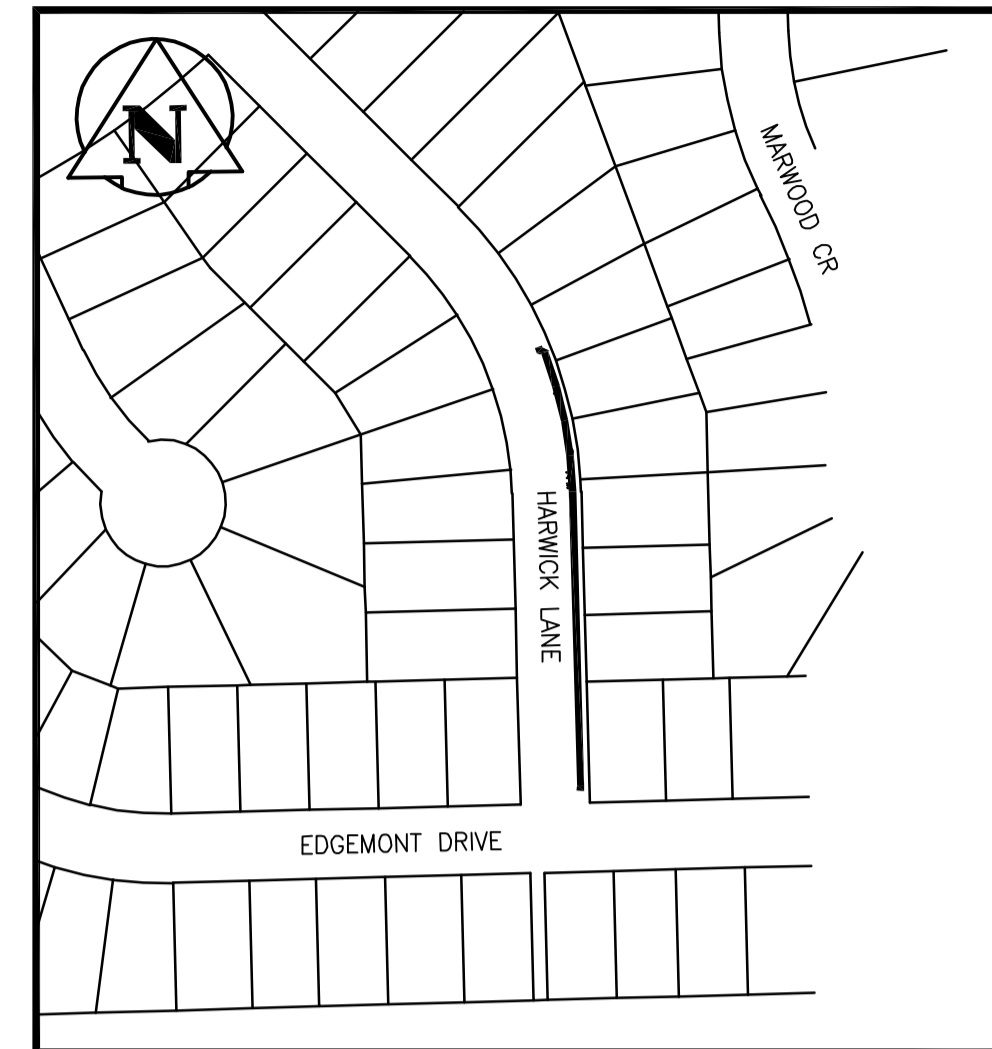


THE CITY OF WINNIPEG

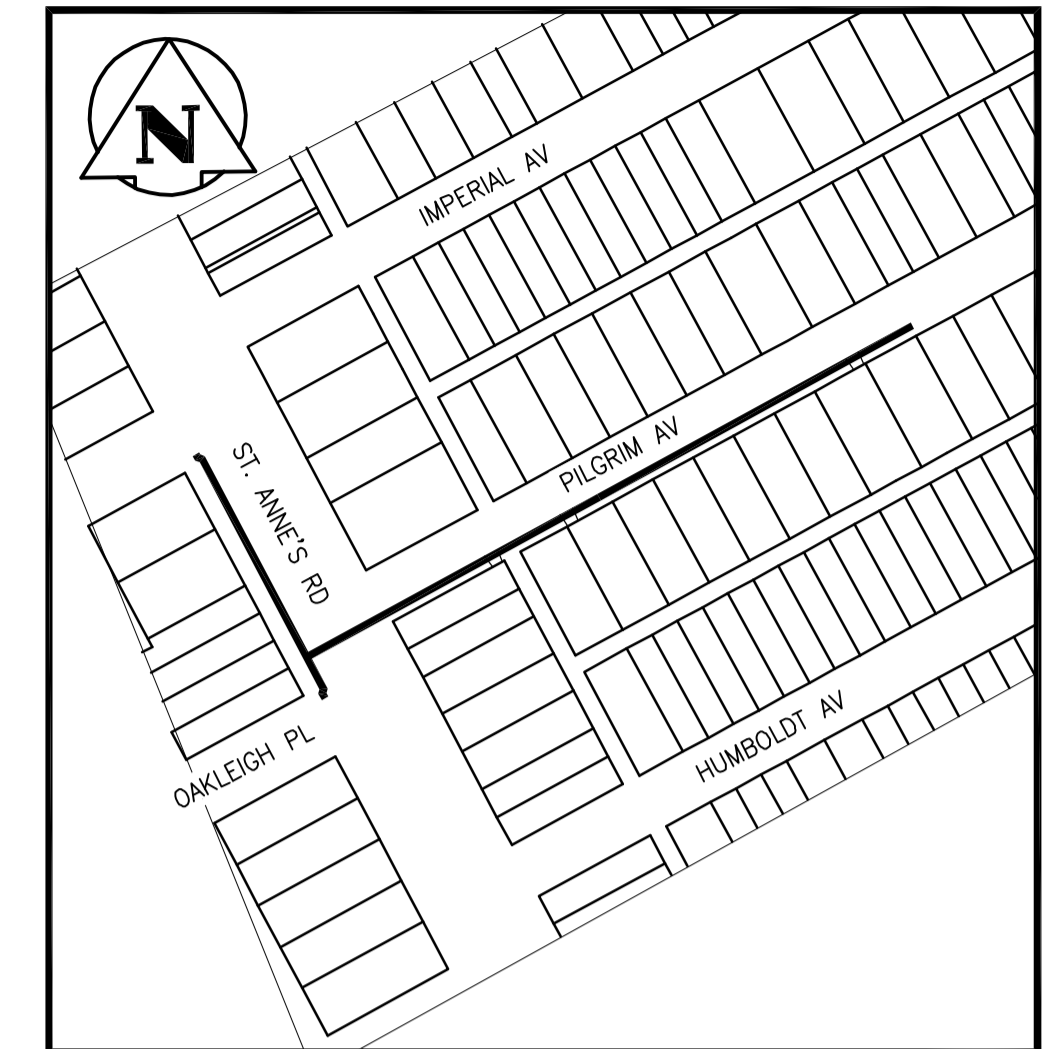
WATER AND WASTE DEPARTMENT
ENGINEERING DIVISION

2015 WATERMAIN RENEWALS & ASSOCIATED WORKS

CONTRACT NO. 1
BID OPPORTUNITY 249-2015



HARWICK LANE – EDMONT DRIVE TO 123>NNL OF EDMONT DRIVE



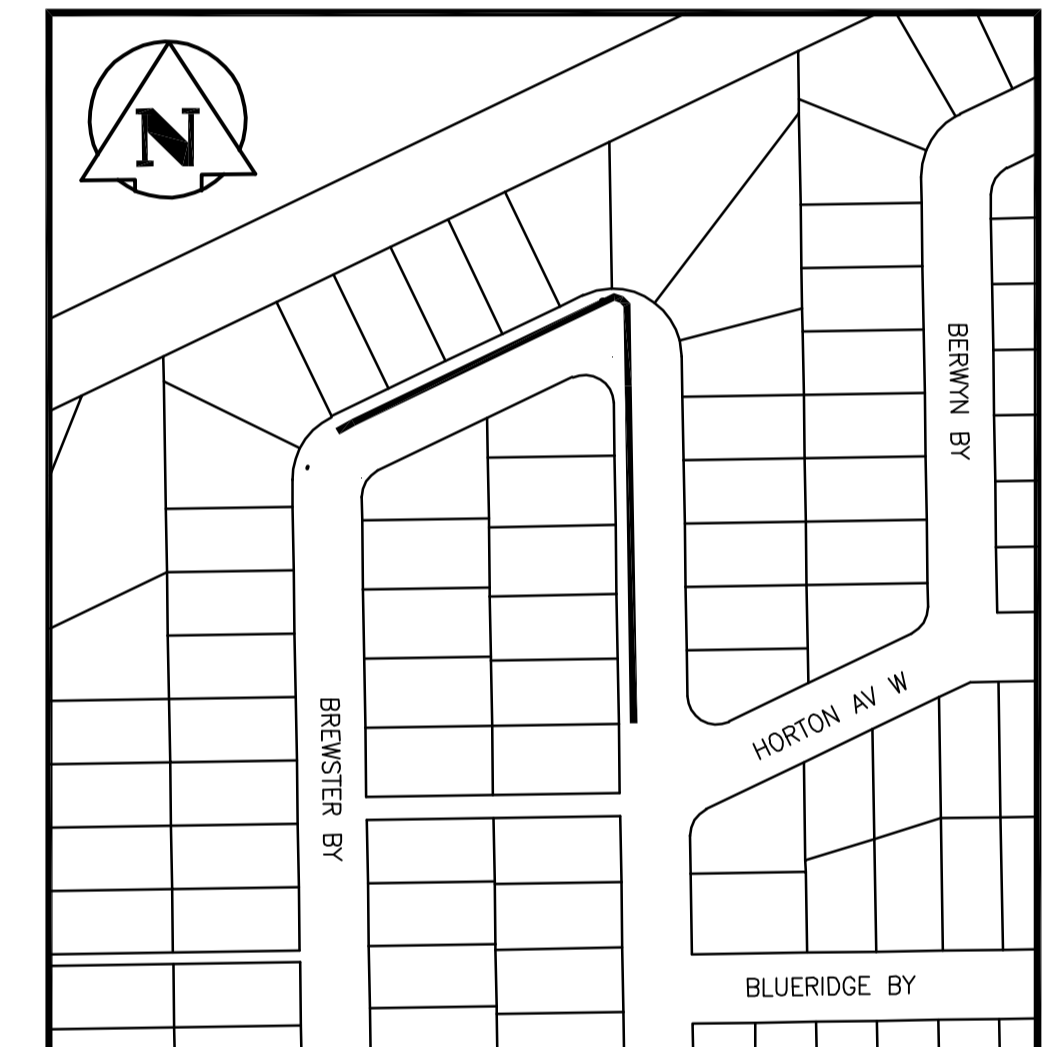
ST. ANNE'S ROAD – OAKLEIGH PLACE TO LORAIN STREET
PILGRIM AVENUE – ST. ANNE'S ROAD TO 158 EEL OF ST. ANNE'S ROAD



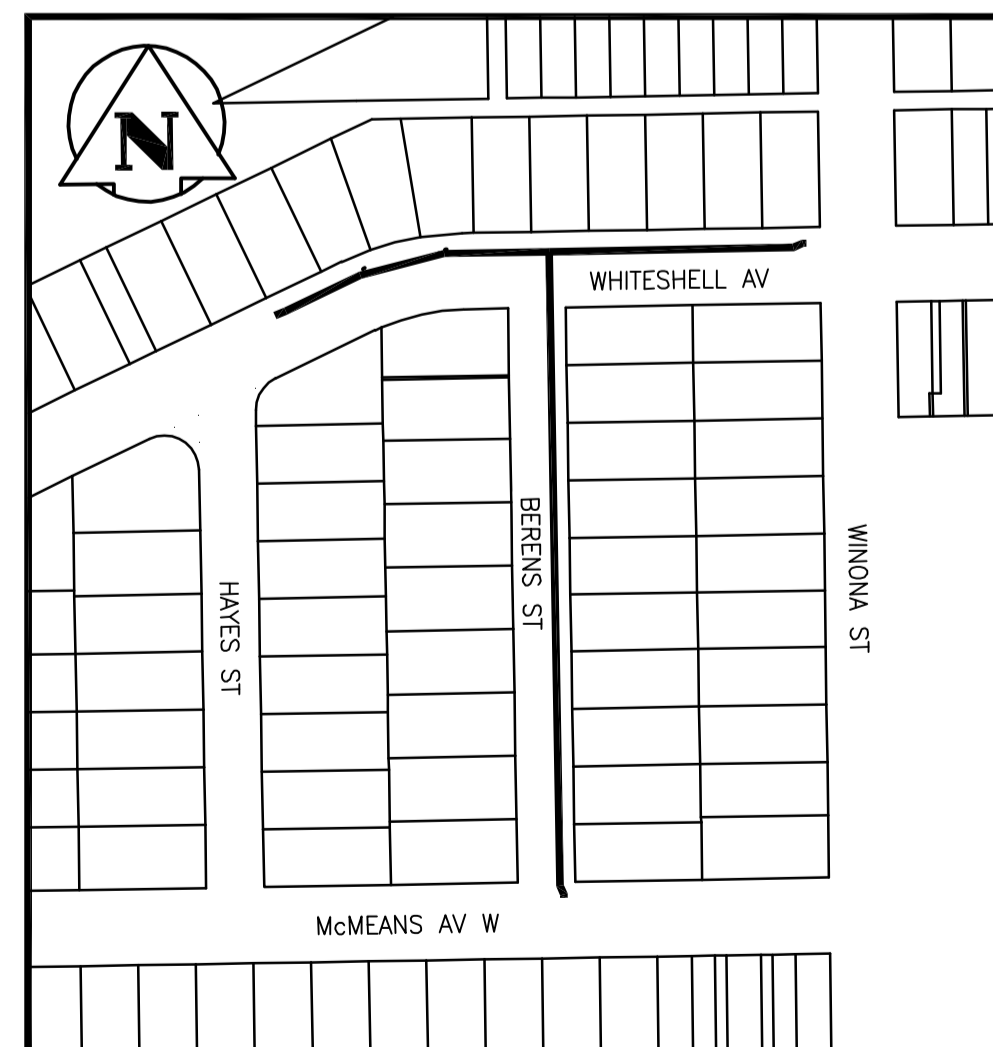
FONTAINE CRESCENT – DE BOURMONT AVENUE TO TO 17 SSL OF FLEURY PLACE



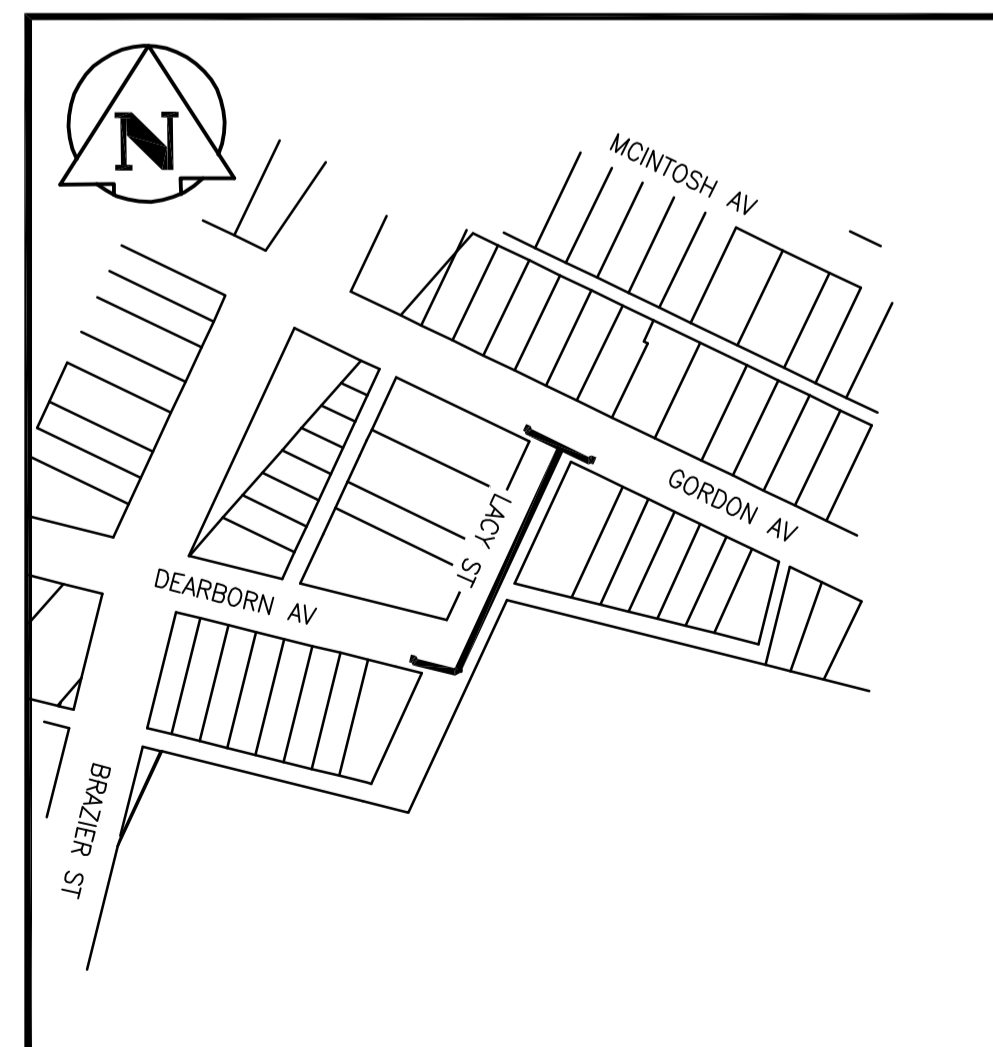
ENFIELD CRESCENT – GOULET STREET TO BERTRAND STREET



BREWSTER BAY (N LEG) – BREWSTER BY (W. LEG) TO HORTON AVENUE W



WHITESHELL AVENUE – HAYES STREET TO WINONA STREET
BERENS STREET – MCMEANS AVENUE W TO WHITESHELL AVENUE



LACY STREET – DEARBORN AVENUE TO GORDON AVENUE



EDISON AVENUE – BROAD BAY (E LEG) TO DE GRAFF PLACE



KEY MAPS