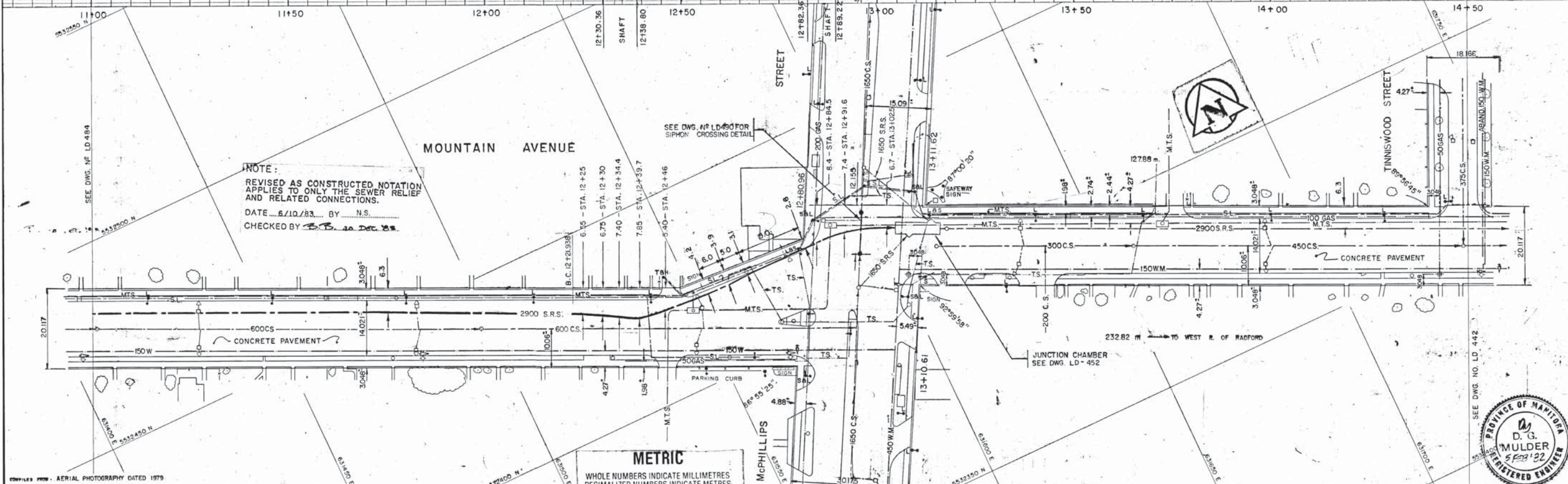
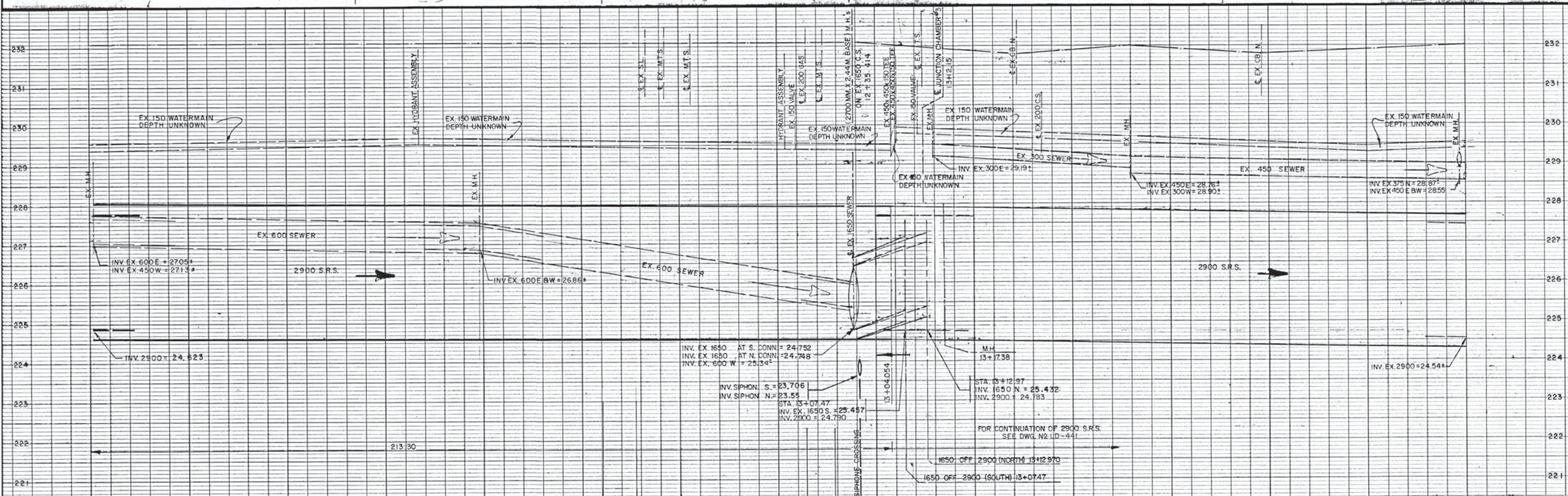


## **Appendix C**

### **LD-486 Mountain Avenue SRS As-Built Drawing (Indicated Siphon Location)**

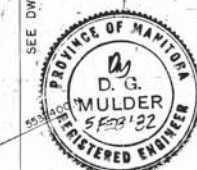
REF. or DRAWING No. **LD-486**  
DETAILS **FILE # LD 11326**



PLAN LEGEND				PROFILE LEGEND				
DESCRIPTION	EXISTING	PROPOSED	DESCRIPTION	EXISTING	PROPOSED	DESCRIPTION	EXISTING	PROPOSED
COMBINED SEWER (C.S.)	---	---	MANHOLE	○	○	COMBINED SEWER (C.S.)	---	---
WASTEWATER SEWER (WWS)	250 WWS	450 LDS	CATCH BASIN	□	□	WASTEWATER SEWER (WWS)	---	---
LAND DRAINAGE SEWER (LDS)	---	---	CATCH BASIN INLET	▽	▽	LAND DRAINAGE SEWER (LDS)	---	---
STORM RELIEF SEWER (S.R.S.)	---	2700 S.R.S.	FIRE HYDRANT	⊕	⊕	STORM RELIEF SEWER (S.R.S.)	---	---
WATERMAIN	150 W.M.	150 W.M.	WATER VALVE	⊕	⊕	WATERMAIN	---	---
MANITOBA TELEPHONE SYS.	---	---	SURVEY BAR	⊕	⊕	INVERT ELEVATION	31.648	31.648
GAS LINE	100 GAS	---	POLE: HYDRO (H) M.TS.(T)	⊕	⊕	PAVEMENT CENTRE LINE	---	---
TRAFFIC SIGNAL	---	---	LIGHT STANDARD (L)	⊕	⊕			
HYDRO & STREET LIGHTING	---	---	TRAFFIC SIGNAL (TS)	⊕	⊕			
			ROAD SIGN	⊕	⊕			

COMPILERS FROM AERIAL PHOTOGRAPHY DATED 1979  
BY AIRQUEST SURVEYS LIMITED

**METRIC**  
WHOLE NUMBERS INDICATE MILLIMETRES  
DECIMALIZED NUMBERS INDICATE METRES



**INTERDISCIPLINARY ENGINEERING COMPANY**  
PROFESSIONAL ENGINEERS  
WINNIPEG, MANITOBA

DESIGNED BY: D.M. DRAWN BY: K.B. & N.G.  
CHECKED BY: R.C.I. DATE: APRIL 7, 1981  
APPROVED BY: R.C. Jansz DATE: 7-215/82

**THE CITY OF WINNIPEG**  
WORKS & OPERATIONS DIVISION  
WATERWORKS, WASTE & DISPOSAL DEPARTMENT

**ST. JOHN'S/POLSON SEWER RELIEF PROJECT**  
MOUNTAIN AVENUE  
STA. 11+00 TO McPHILLIPS ST.

RELEASED FOR CONSTRUCTION: [Signature] DATE: Feb. 5 '82  
SCALE: HORIZ. = 1:500 VERT. = 1:50  
DRAWING NO: LD 486