

Owner

| No. | Date | Revision Notes |
|-----|------------|-------------------------|
| 1. | 2015.05.08 | Issued for Construction |
| 2. | 2015.06.18 | Issued for Addendum 3 |



This drawing must not be scaled. The contractors shall verify all dimensions and other data on site prior to commencement of work. Discrepancies, errors, and omissions are to be reported to the Architect prior to proceeding with the Work.

Drawings and specifications as instruments of service are the property of the Architect; the copyright in the same being reserved to him.

No reproduction or revision to these drawings may be made without the permission of the Architect, and when made, must bear his name. All prints to be returned to the Architect upon request.

Project
St. Vital Park Washrooms

Drawing
Sections and Details

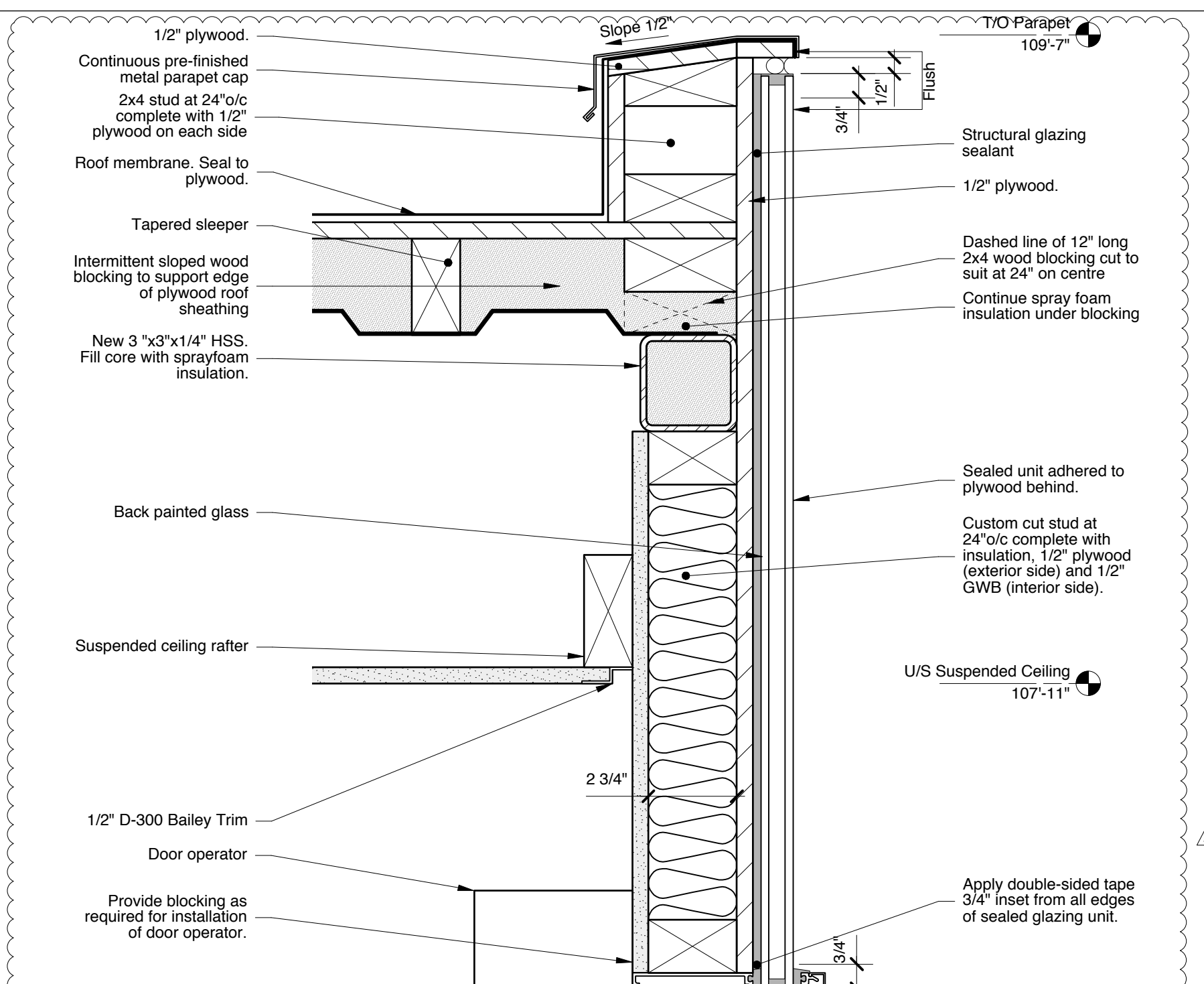
Drawn By
MP
Scale
As Noted

Reviewed By
PS
Drawing No.
A-07

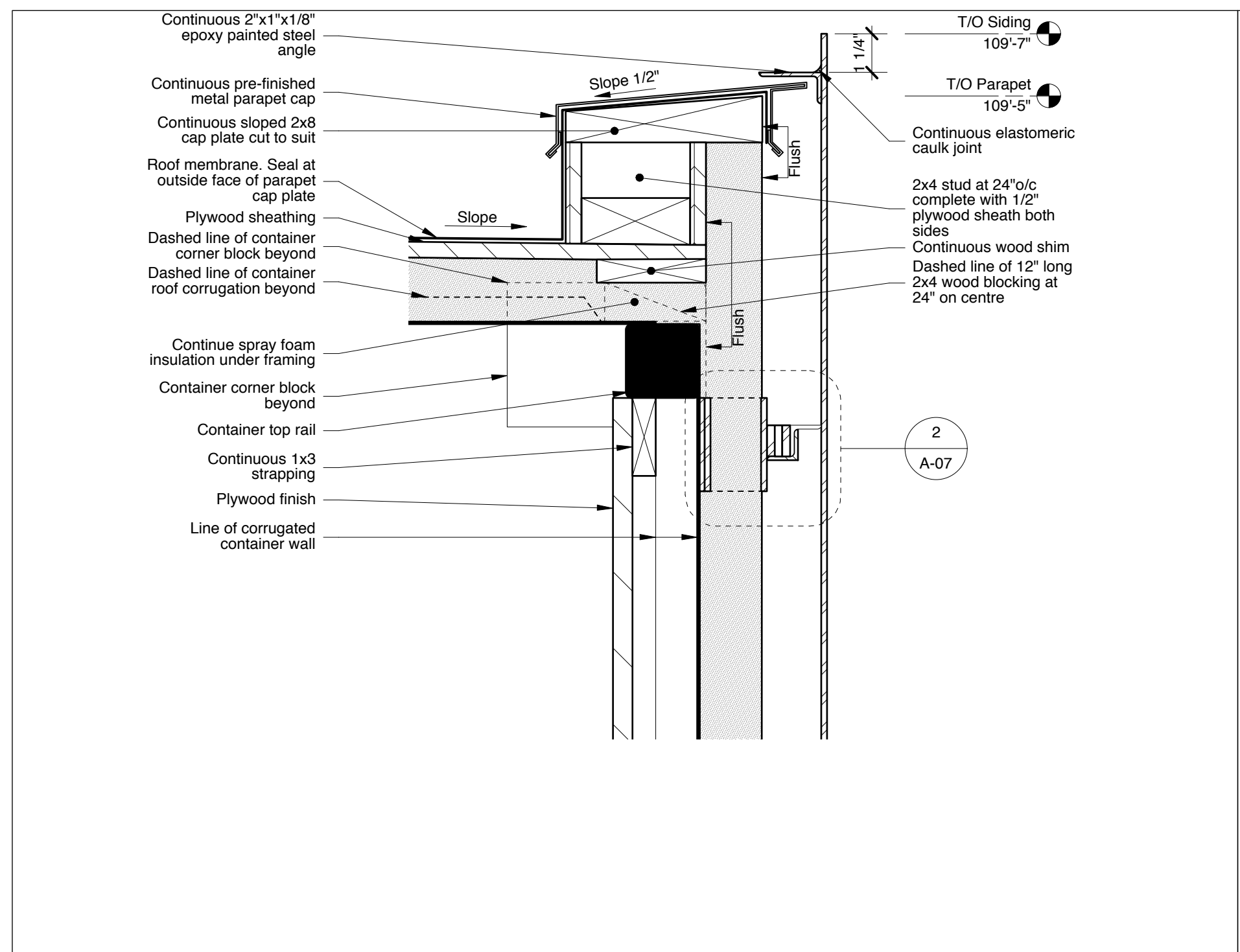
Date
2015

Project No.
1445

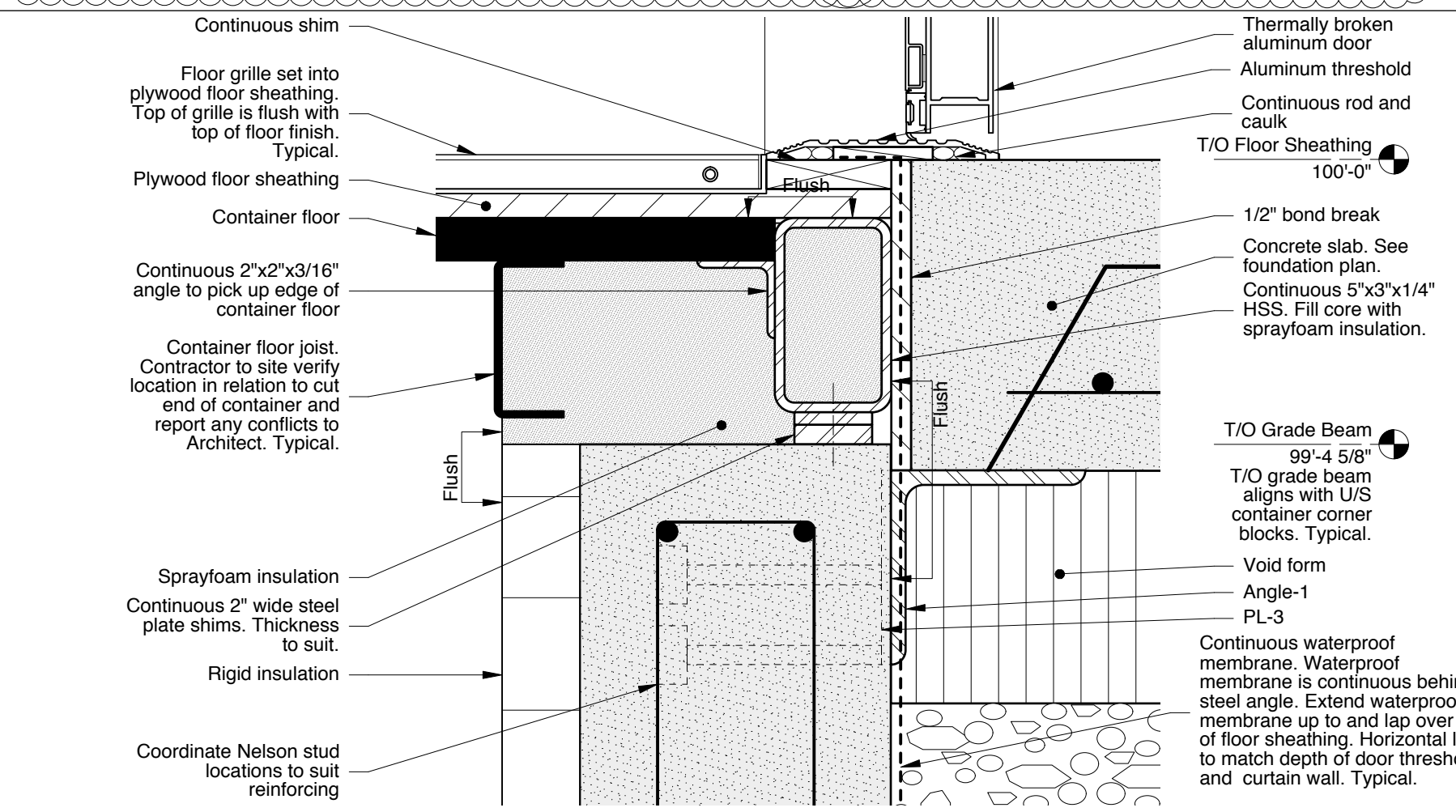
Revision No.
0



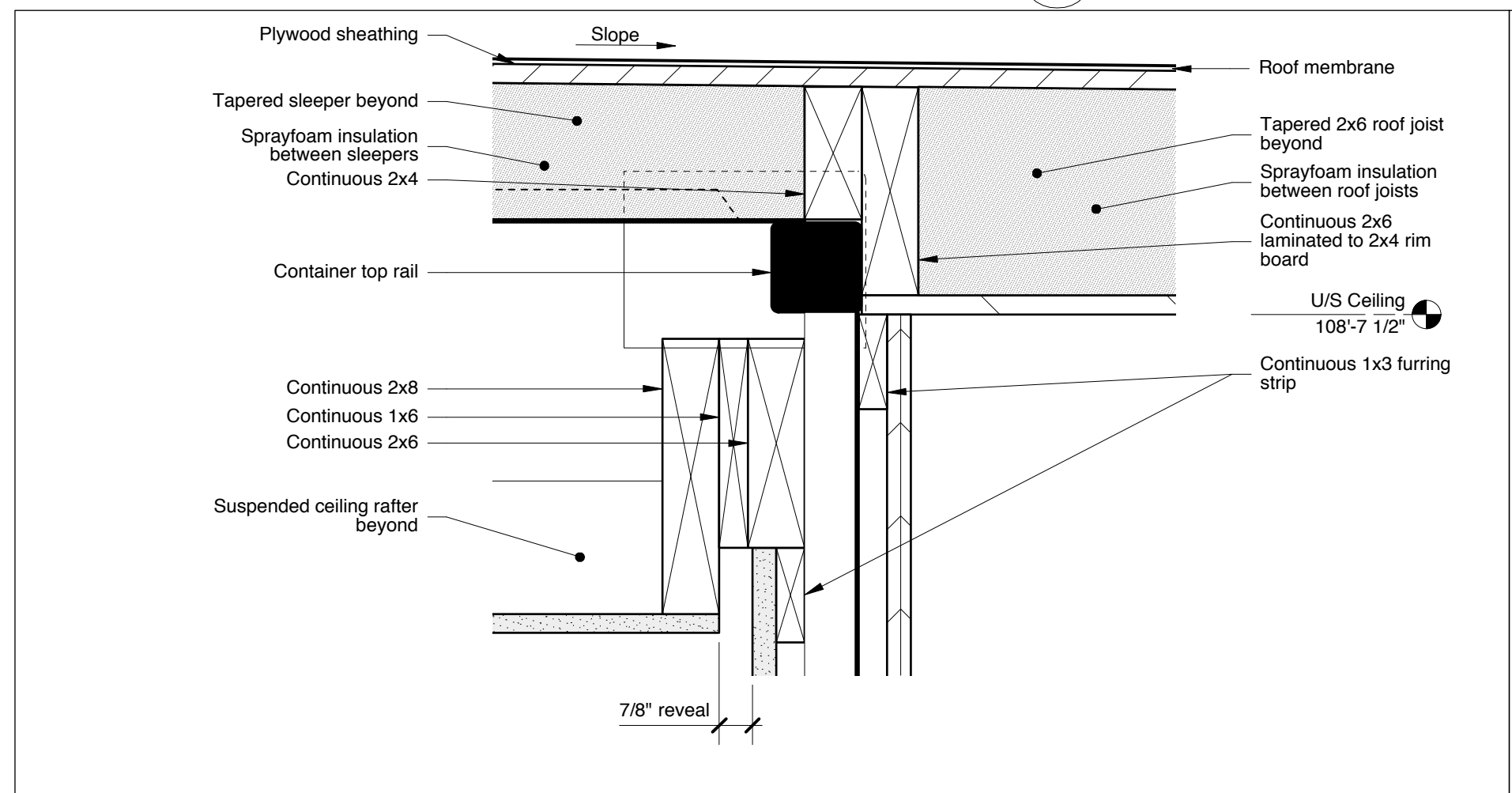
6 Parapet Section Detail at Re-built Container End
3"=1'-0"



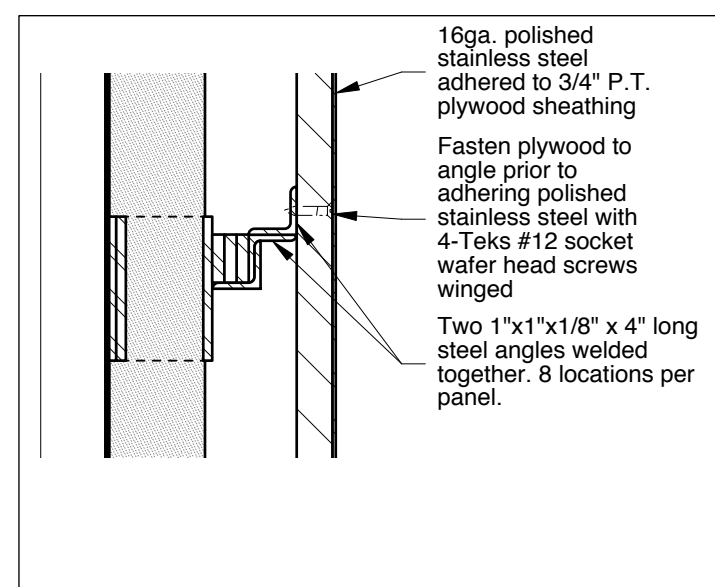
7 Parapet Section Detail
3"=1'-0"



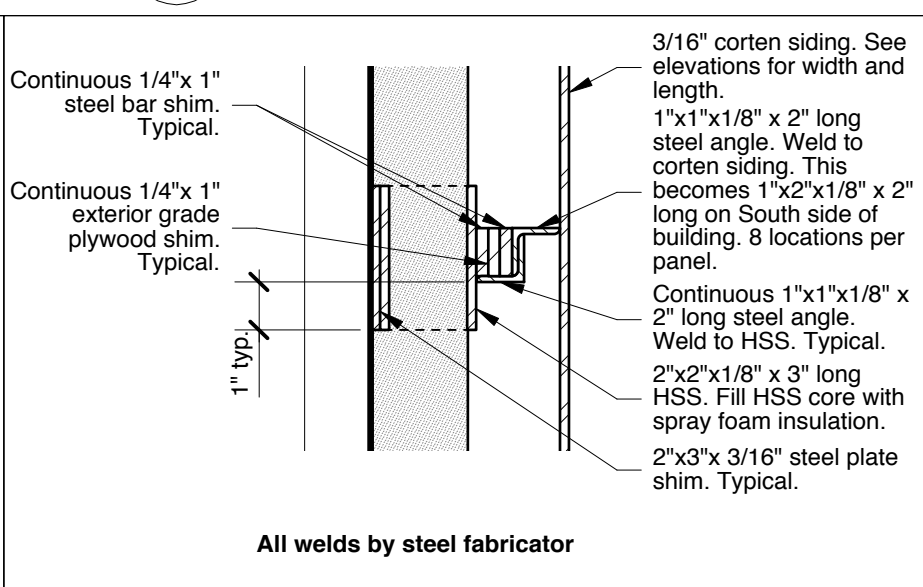
4 Section Detail of Entry Door Sill at Re-built Container End
3"=1'-0"



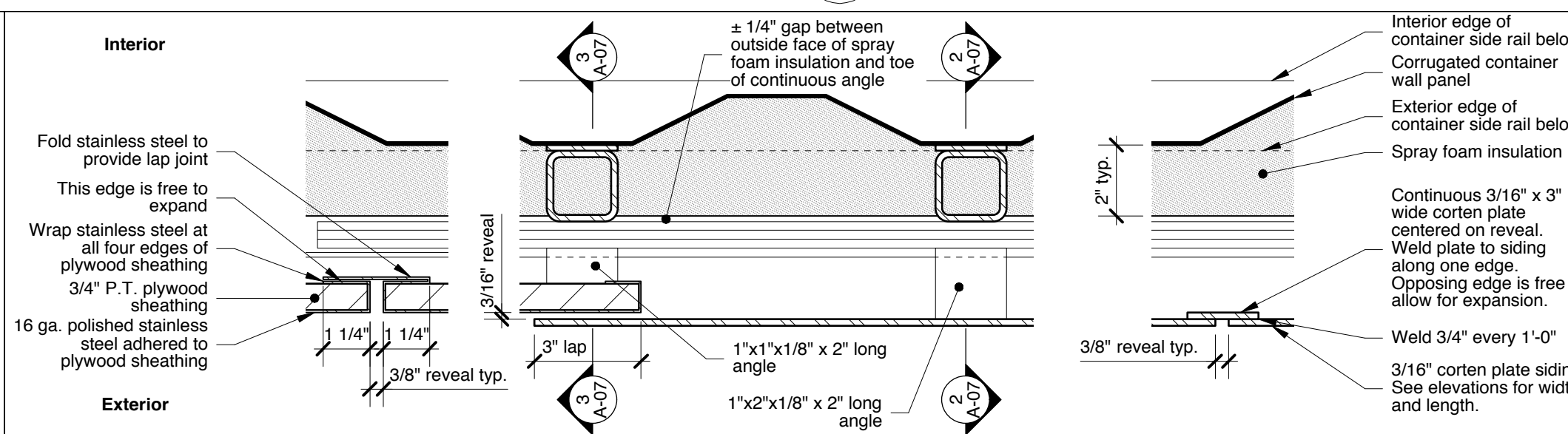
5 Section Detail of Mechanical Core Roof Connection to Containers
3"=1'-0"



3 Polished Steel Siding Support
3"=1'-0"



2 Corten Siding Support
3"=1'-0"



1 Plan Details of Siding Relationships
3"=1'-0"