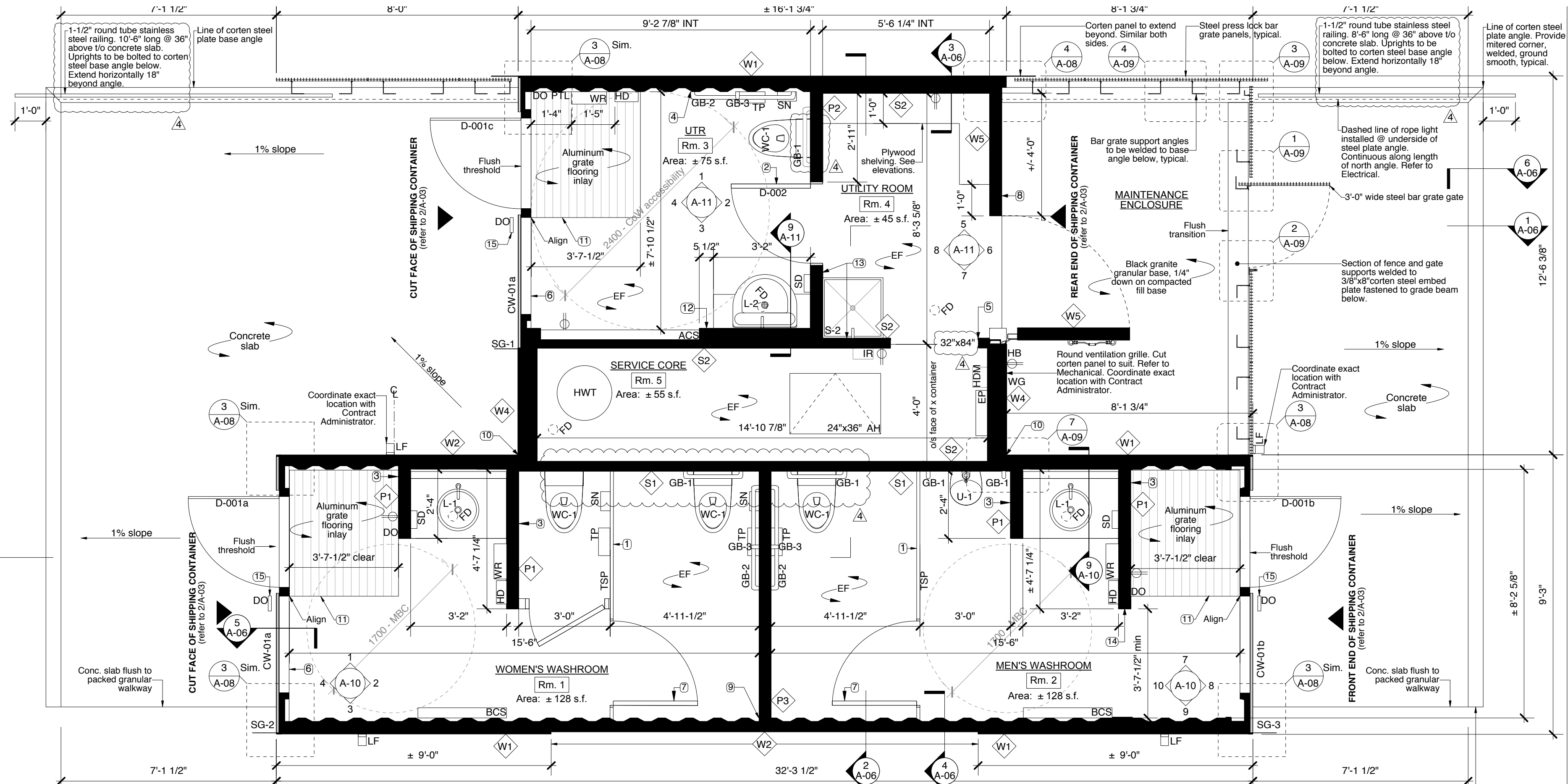
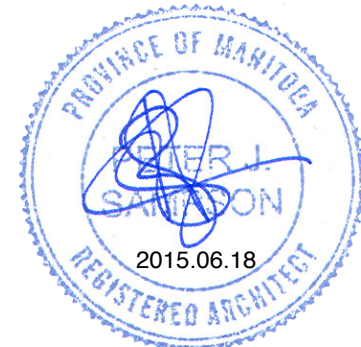
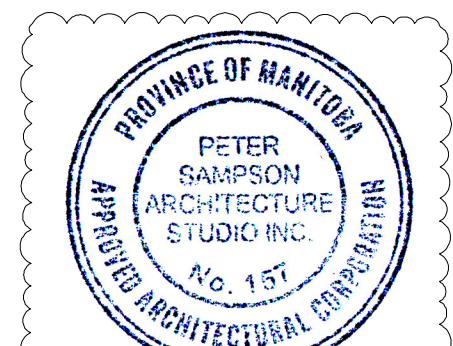


No.	Date	Revision Notes
1.	15.03.10	Issued for Coord
2.	15.04.10	Issued for 66% Review
3.	15.05.08	Issued for Construction
4.	15.06.18	Issued for Addendum 3



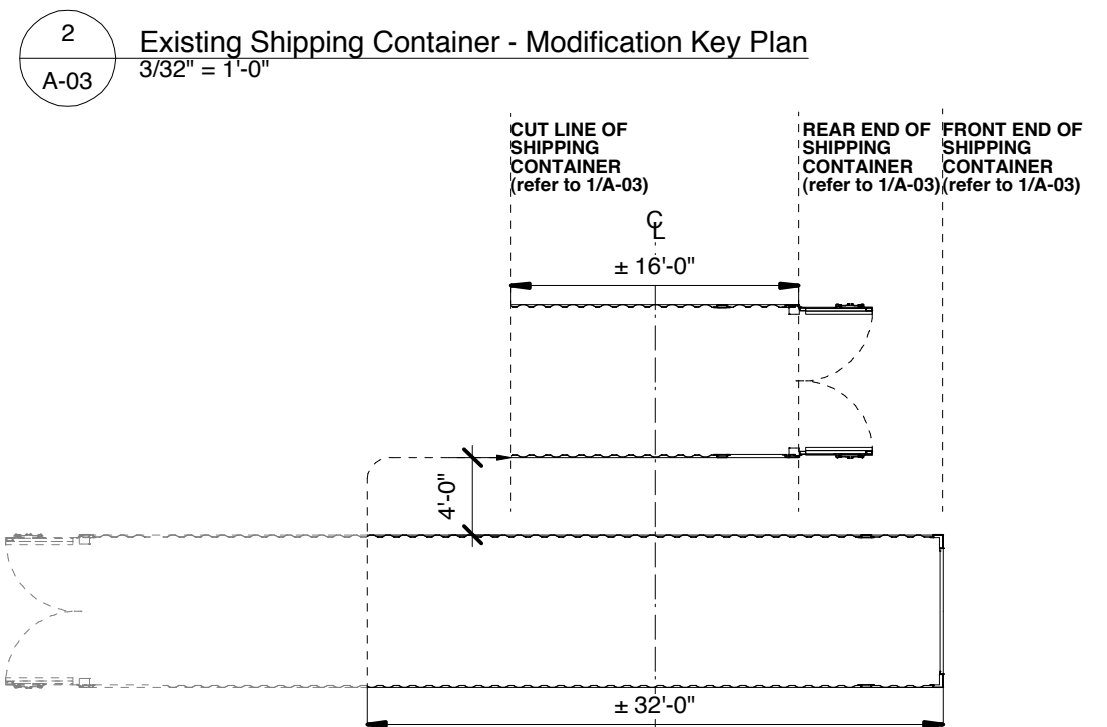
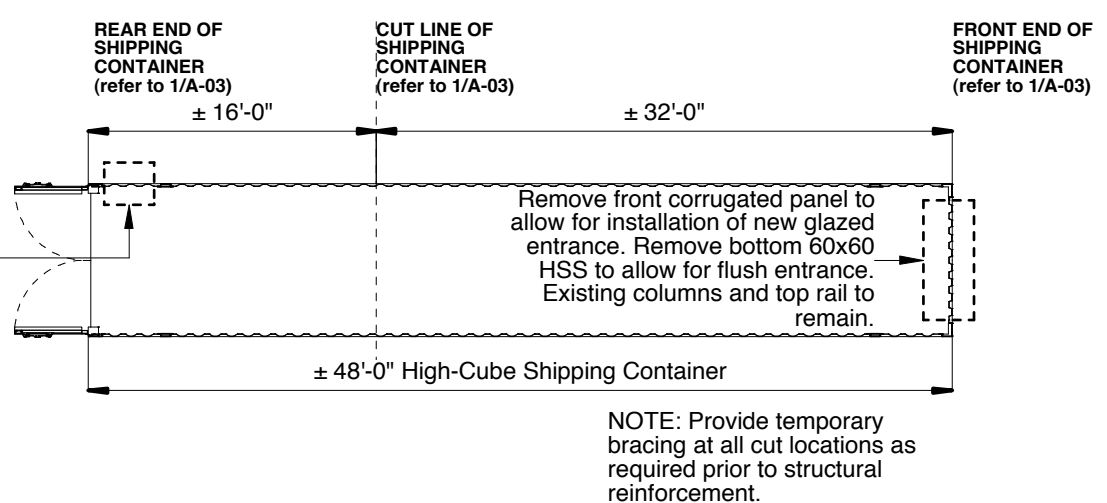
**Construction Notes**

- Anchor and provide additional support for ceiling mounted toilet partitions as per manufacturer's written instructions. Typical.
- Flush frame door (flush with P2 on UTR side) c/w hidden hinge. Paint door to match wall.
- Provide continuous blocking @ partition wall P1 both sides of sink, typical. Refer to 9/A-10 and Interior Elevations.
- Consult Contract Administrator for installation and alignment of washroom accessories on exposed container wall corrugations. Provide steel installation plate, painted to match wall as required.
- Provide 3/16" plate steel surround at door location complete with 3/16" reveal, typical. Ensure flush transition between Rm. 4 & Rm. 5.
- Provide new 3"x3"x1/4" HSS vertical posts welded to container walls each side, 3"x3"x1/4" HSS top rail, and 3"x5"x1/4" bottom rail.
- Ensure toilet partition door is 36" minimum clear width.
- Weld existing north container door @ Rm. 4 in closed position. Paint outside of both container doors with epoxy paint. Colour to be selected by Contract Administrator.
- Provide continuous 5/8" Bailey's metal GWB reveal at all partition junctures to existing container interior wall. Typical.
- Maintain 3/8" reveal between exterior metal panels @ inside corner.
- Ensure flush transition between recessed floor grate & epoxy flooring. Run grating parallel to curtain wall.
- Provide 2x4 on edge build out for recessed ACS and sink carrier. Anchor and provide blocking for Adult Change Station as per manufacturer's written instruction.
- Provide fibre reinforced panel (FRP) @ mop sink. Colour to be selected by Contract Administrator. Carry for full trim and sealant.
- Provide stainless steel corner guards @ outside corners of GWB wall, 48" A.F.F. Typical.
- Provide steel plate bollard fastened @ bottom to concrete slab. Mount door operator push plate to pedestal. Coordinate exact location and dimensions of steel bollard with Contract Administrator. Refer to hardware schedule.

**ROOM FINISH SCHEDULE**

ROOMS:	FLOORS:	WALLS:	CEILINGS:										
			FLR.	BASE	NORTH	EAST	SOUTH	WEST	HEIGHT	MATL	FIN.		
RM 1 Women's Washroom	EF/GR	CB	X/GWB	EPT	GWB	EPT	X	EPT	GL/GWB	MG/FG/PT	7'-11"	GWB	EPT
RM 2 Men's Washroom	EF/GR	CB	X/GWB	EPT	GL/GWB	MG/FG/PT	X	EPT	GWB	EPT	7'-11"	GWB	EPT
RM 3 UTR	EF/GR	CB	X	EPT	GWB	EPT	GWB/X	EPT	GL/GWB	MG/FG/PT	7'-11"	GWB	EPT
RM 4 Utility Room	EF	CB	PLY	-	PLY	-	PLY/FRP	-	PLY/FRP	-	8'-11"	X	EPT
RM 5 Service Core	EF	CB	PLY	-	PLY	-	PLY	-	PLY	-	8'-7 1/2"	GWB	EPT

NO.	NOMINAL SIZE	FIRE RATING	TYPE, see Elevations	MATERIAL	CORE	FINISH	GLASS	HARDWARE	FRAMES			
									TYPE	MATERIAL	FINISH	FIRE RATING
<b>MAIN FLOOR</b>												
D-001a	3'-0"x7'-0"	-	A	Aluminum	Insul.	Anod.	Tempered	Set A	See notes	Aluminum	Anod.	-
D-001b	3'-0"x7'-0"	-	A	Aluminum	Insul.	Anod.	Tempered	Set A	See notes	Aluminum	Anod.	-
D-001c	3'-0"x7'-0"	-	A	Aluminum	Insul.	Anod.	Tempered	Set B	See notes	Aluminum	Anod.	-
D-003	2'-8" x 7'-0"	45 min	B	Wood	Solid	Paint	-	Set C	See notes	Wood	Paint	-



This drawing must not be scaled. The contractors shall verify all dimensions and other data on site prior to commencement of work. Discrepancies, errors, and omissions are to be reported to the Architect prior to proceeding with the Work.

Drawings and specifications as instruments of service are the property of the Architect; the copyright in the same being reserved to him.

No reproduction or revision to these drawings may be made without the permission of the Architect, and when made, must bear his name. All prints to be returned to the Architect upon request.

Project  
**St. Vital Park Washrooms**

Drawing  
**Floor Plan**

Drawn By  
MH  
Scale

Reviewed By  
PS  
Drawing No.

**A-03**

Date  
May 2015

Project No.  
1445

File No.  
0