

Style # I47S01

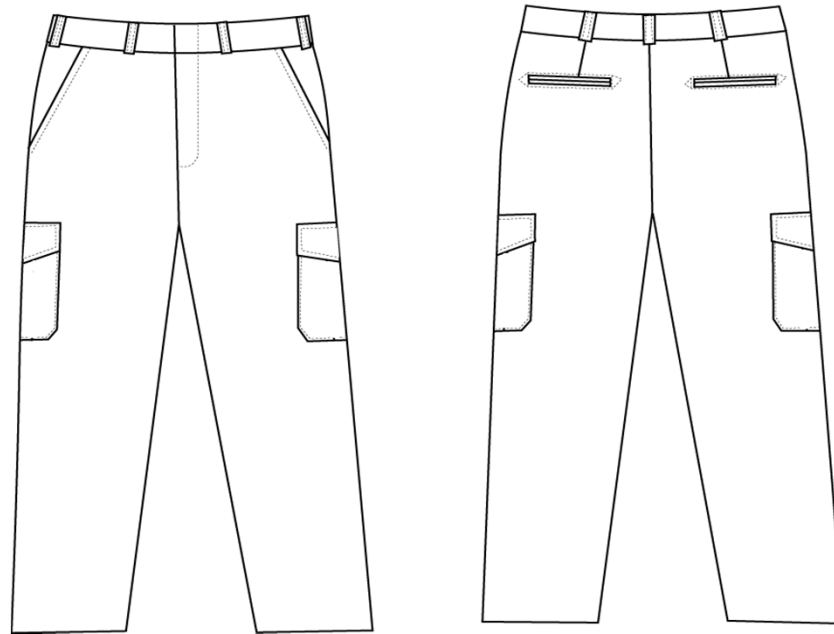
Description Uniform Shirts Long Sleeve Ladies



All Measurements are in inches.

| Description | 14 | 14 1/2 | 15 | 15 1/2 | 16 | 16 1/2 | 17 | 17 1/2 | 18 | 18 1/2 | | | |
|--------------------------|--------|-----------------------|--------|--------|--------|--------|--------|--------|--------|--------|--|--|---|
| Collar (btn hole to btn) | 14 | 14 1/2 | 15 | 15 1/2 | 16 | 16 1/2 | 17 | 17 1/2 | 18 | 18 1/2 | | | |
| Chest (1" Blw Armhole) | 41 | 42 | 43 | 44 | 45 | 46 | 47 | 48 | 49 | 52 | | | |
| Waist (16" from HPS) | 40 | 41 | 42 | 43 | 44 | 45 | 46 1/2 | 47 1/2 | 49 | 50 1/2 | | | |
| Sweep | 44 | 45 | 46 | 47 | 48 | 49 | 50 | 51 | 52 | 53 | | | |
| Armhole Straight | 18 | 19 | 20 | 21 | 22 | 23 | 24 | 25 | 26 | 27 | | | |
| Back Body Length CBN | 28 1/2 | 28 1/2 | 28 1/2 | 28 1/2 | 28 1/2 | 28 1/2 | 28 1/2 | 28 1/2 | 28 1/2 | 28 1/2 | | | |
| Sleeve length | | ← 33/ 34 / 35/ 36/ 37 | | | | | | | | | | | → |
| Cuff (Open) | 9 | 9 1/2 | 10 | 10 1/2 | 11 | 11 1/2 | 12 | 12 1/2 | 13 | 13 1/2 | | | |
| | | | | | | | | | | | | | |
| | | | | | | | | | | | | | |
| | | | | | | | | | | | | | |

| | | | |
|---------|--------|-------------|----------------------|
| Style # | I99T00 | Description | Uniform Pants Ladies |
|---------|--------|-------------|----------------------|

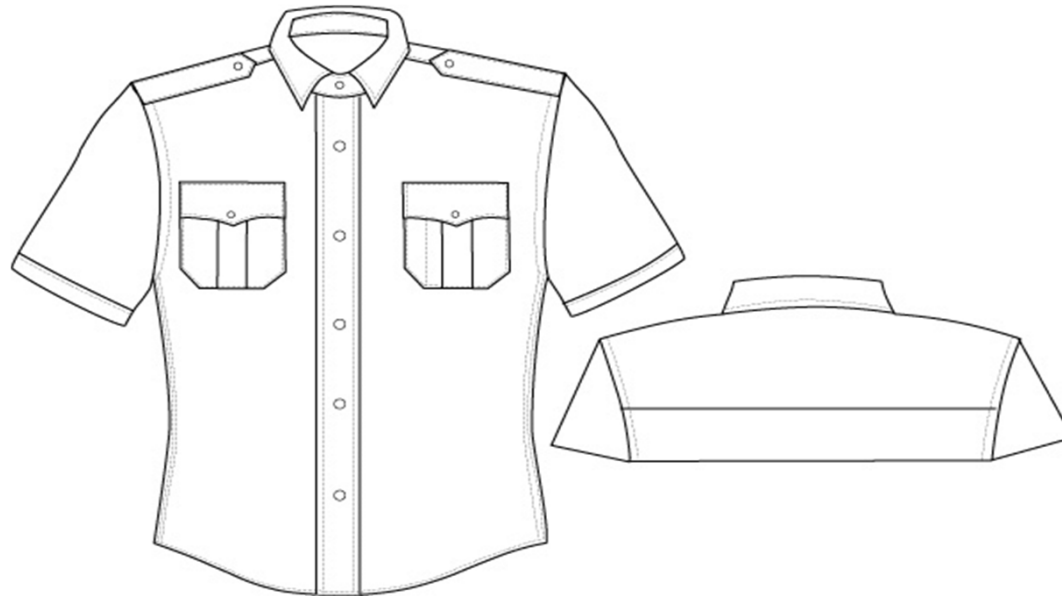


All Measurements are in inches.

| Description | 2 | 4 | 6 | 8 | 10 | 12 | 14 | 16 | 18 | 20 |
|------------------------------|--------|--------|--------|--------|--------|--------|--------|--------|--------|--------|
| Waist | 30 1/2 | 31 1/2 | 32 1/2 | 33 1/2 | 35 | 36 1/2 | 38 | 39 1/2 | 41 1/2 | 43.1/2 |
| Seat @ 4" Below top of waist | 34 3/4 | 35 3/4 | 36 3/4 | 37 3/4 | 39 1/4 | 40 3/4 | 42 1/4 | 43 3/4 | 45 3/4 | 47 3/4 |
| Front rise including W/B | 9 1/4 | 9 1/2 | 9 3/4 | 10 | 10 1/4 | 10 1/2 | 10 3/4 | 11 | 11 1/4 | 11 1/2 |
| Back rise including W/B | 14 1/4 | 14 1/2 | 14 3/4 | 15 | 15 1/4 | 15 1/2 | 15 3/4 | 16 | 16 1/4 | 16 1/2 |
| Thigh @ Crotch | 22 1/4 | 23 | 23 3/4 | 24 1/2 | 25 1/2 | 26 1/2 | 27 1/2 | 28 1/2 | 29 3/4 | 31 |
| Knee @ 14" below crotch | 16 1/4 | 16 1/2 | 16 3/4 | 17 | 17 1/2 | 18 | 18 1/2 | 19 | 19 3/4 | 20 1/2 |
| Bottom hem opening | 15 3/4 | 16 | 16 1/4 | 16 1/2 | 17 | 17 1/2 | 18 | 18 1/2 | 19 1/4 | 20 |
| | | | | | | | | | | |

Style # I42S01

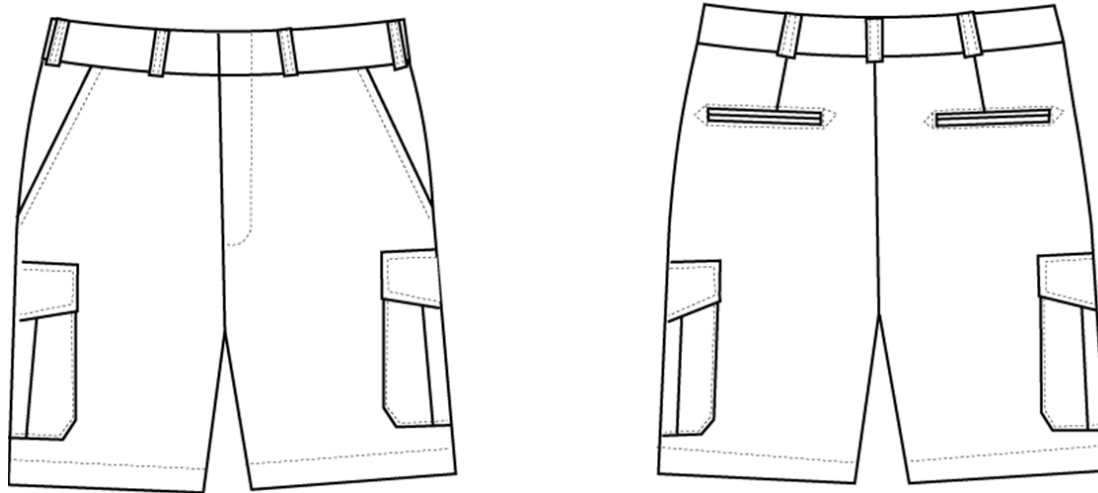
Description Uniform Shirts Short Sleeve Ladies



All Measurements are in inches.

| Description | 14 | 14 1/2 | 15 | 15 1/2 | 16 | 16 1/2 | 17 | 17 1/2 | 18 | 18 1/2 | | | |
|----------------------------|--------|--------|--------|--------|--------|--------|--------|--------|--------|--------|--|--|--|
| Collar (btn hole to btn) | 14 | 14 1/2 | 15 | 15 1/2 | 16 | 16 1/2 | 17 | 17 1/2 | 18 | 18 1/2 | | | |
| Chest (1" Blw Armhole) | 41 | 42 | 43 | 44 | 45 | 46 | 47 | 48 | 49 | 52 | | | |
| Waist (16" from HPS) | 40 | 41 | 42 | 43 | 44 | 45 | 46 1/2 | 47 1/2 | 49 | 50 1/2 | | | |
| Sweep | 44 | 45 | 46 | 47 | 48 | 49 | 50 | 51 | 52 | 53 | | | |
| Armhole Straight | 18 | 19 | 20 | 21 | 22 | 23 | 24 | 25 | 26 | 27 | | | |
| Back Body Length CBN | 28 1/2 | 28 1/2 | 28 1/2 | 28 1/2 | 28 1/2 | 28 1/2 | 28 1/2 | 28 1/2 | 28 1/2 | 28 1/2 | | | |
| Sleeve length (CB to Cuff) | 17 | 17 1/2 | 18 | 18 1/2 | 19 | 19 1/2 | 20 | 20 1/2 | 21 | 21 1/2 | | | |
| Sleeve Opening | 15 | 15 1/2 | 16 | 16 1/2 | 17 | 17 1/2 | 18 | 18 1/2 | 19 | 19 1/2 | | | |
| | | | | | | | | | | | | | |
| | | | | | | | | | | | | | |
| | | | | | | | | | | | | | |

Style # I99R01 **Description** Uniform Shorts Ladies

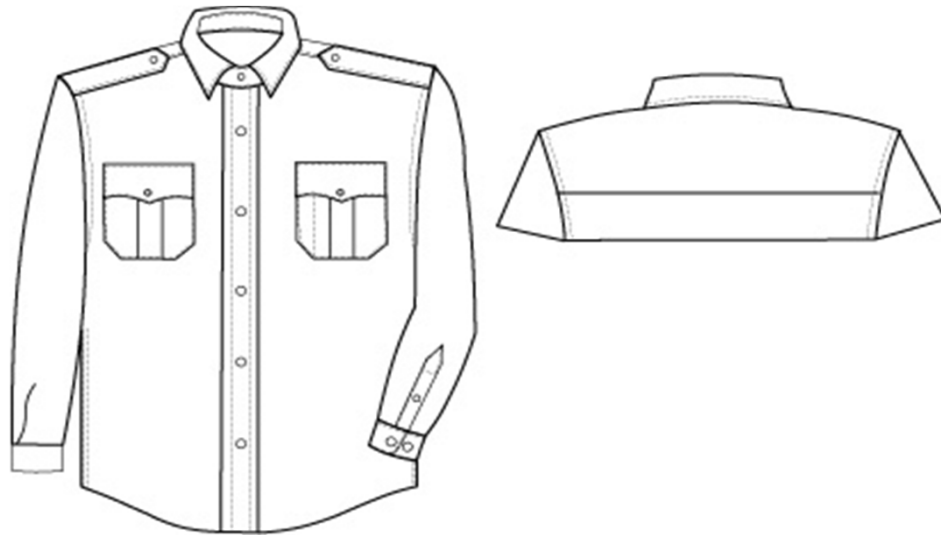


All Measurements are in inches.

| Description | 2 | 4 | 6 | 8 | 10 | 12 | 14 | 16 | 18 | 20 |
|------------------------------|--------|--------|--------|--------|--------|--------|--------|--------|--------|--------|
| Waist | 30 1/2 | 31 1/2 | 32 1/2 | 33 1/2 | 35 | 36 1/2 | 38 | 39 1/2 | 41 1/2 | 43.1/2 |
| Seat @ 4" Below top of waist | 34 3/4 | 35 3/4 | 36 3/4 | 37 3/4 | 39 1/4 | 40 3/4 | 42 1/4 | 43 3/4 | 45 3/4 | 47 3/4 |
| Front rise including W/B | 9 1/4 | 9 1/2 | 9 3/4 | 10 | 10 1/4 | 10 1/2 | 10 3/4 | 11 | 11 1/4 | 11 1/2 |
| Back rise including W/B | 14 1/4 | 14 1/2 | 14 3/4 | 15 | 15 1/4 | 15 1/2 | 15 3/4 | 16 | 16 1/4 | 16 1/2 |
| Thigh @ Crotch | 22 1/4 | 23 | 23 3/4 | 24 1/2 | 25 1/2 | 26 1/2 | 27 1/2 | 28 1/2 | 29 3/4 | 31 |
| Bottom hem opening | 19 | 19 1/4 | 19 1/2 | 19 3/4 | 20 | 20 1/4 | 20 1/2 | 20 3/4 | 21 | 21 1/4 |
| Inseam | 11 | 11 | 11 | 11 | 11 | 11 | 11 | 11 | 11 | 11 |

Style # I76N09

Description Uniform Shirts Long Sleeve Men's



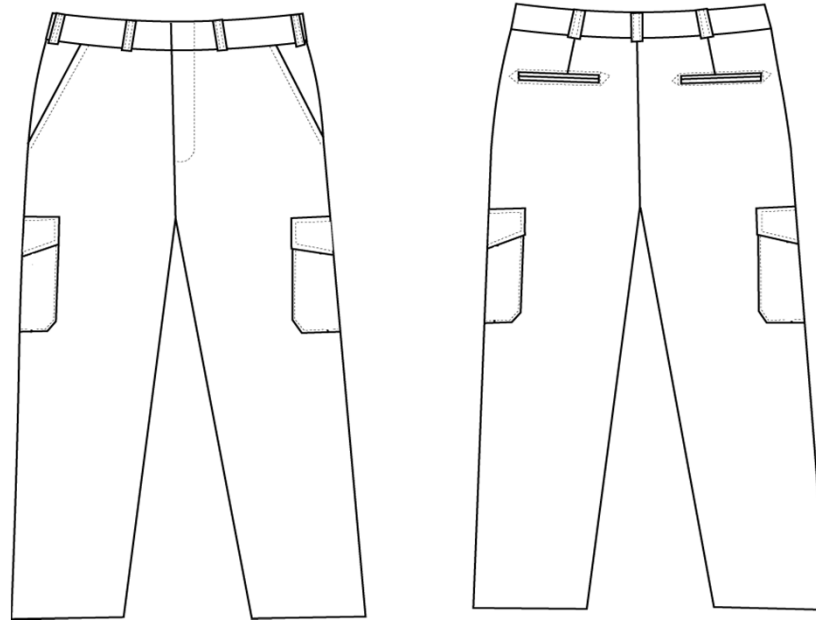
All Measurements are in inches.

| Description | 14 1/2 | 15 | 15 1/2 | 16 | 16 1/2 | 17 | 17 1/2 | 18 | 18 1/2 | 19 | 19 1/2 | 20 | 20 1/2 |
|--------------------------|-------------------------|--------|--------|--------|--------|--------|--------|--------|--------|--------|--------|--------|--------|
| Collar (btn hole to btn) | 15 1/2 | 16 | 16 1/2 | 17 | 17 1/2 | 18 | 18 1/2 | 19 | 19 1/2 | 20 | 20 1/2 | 21 | 21 1/2 |
| Chest (1" Blw Armhole) | 42 | 44 | 46 | 48 | 50 | 52 | 54 | 56 | 58 | 60 | 62 | 64 | 66 |
| Waist | 39 | 41 | 43 | 45 | 47 | 49 | 51 | 53 | 56 | 59 | 62 | 64 | 66 |
| Sweep | 42 | 44 | 46 | 48 | 50 | 52 | 54 | 56 | 58 | 60 | 62 | 64 | 66 |
| Armhole Straight | 19 | 19 1/2 | 20 | 20 1/2 | 21 | 21 1/2 | 22 | 23 | 24 | 25 | 26 | 27 | 28 |
| Back Body Length CBN | 33 1/2 | 33 1/2 | 34 1/2 | 34 1/2 | 34 1/2 | 34 1/2 | 36 1/2 | 36 1/2 | 36 1/2 | 36 1/2 | 36 1/2 | 36 1/2 | 36 1/2 |
| Sleeve length | ← 33/ 34 / 35/ 36/ 37 → | | | | | | | | | | | | |
| Cuff (Open) | 9 7/8 | 10 3/8 | 10 3/8 | 10 7/8 | 10 7/8 | 11 3/8 | 11 3/8 | 11 7/8 | 11 7/8 | 12 3/8 | 12 3/8 | 12 7/8 | 12 7/8 |
| | | | | | | | | | | | | | |
| | | | | | | | | | | | | | |

Style # I69T01

Description

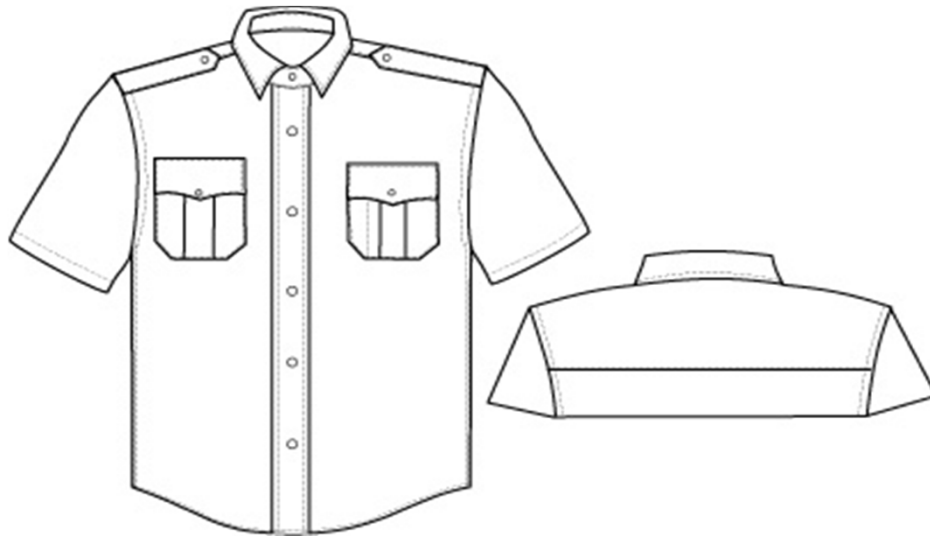
Uniform Pants Men's



All Measurements are in inches.

| Description | 28 | 30 | 32 | 34 | 36 | 38 | 40 | 42 | 44 | 46 | 48 |
|-----------------------------------|--------|--------|--------|--------|--------|--------|--------|--------|--------|--------|--------|
| Waist | 29 | 31 | 33 | 35 | 37 | 39 | 41 | 43 | 45 | 47 | 49 |
| Seat 8" DOWN FR TOP OF W/B | 38 | 40 | 42 | 44 | 46 | 48 | 50 | 52 | 54 | 56 | 58 |
| Front Rise No Waist BAND | 9 1/2 | 9 3/4 | 10 | 10 1/4 | 10 1/2 | 10 3/4 | 11 | 11 1/4 | 11 1/2 | 11 3/4 | 12 |
| Back Rise No Waist BAND | 15 | 15 1/4 | 15 1/2 | 15 3/4 | 16 | 16 1/4 | 16 1/2 | 16 3/4 | 17 | 17 1/4 | 17 1/2 |
| Thigh 1" FROM CROTCH | 26 3/4 | 27 1/2 | 28 1/4 | 29 | 29 3/4 | 30 1/2 | 31 1/4 | 32 | 32 3/4 | 33 1/2 | 34 1/4 |
| Knee 14" FROM CROTCH | 18 3/4 | 19 1/4 | 19 3/4 | 20 1/4 | 20 3/4 | 20 1/4 | 20 3/4 | 21 1/4 | 21 3/4 | 22 1/4 | 22 3/4 |
| Bottom Opening | 18 7/8 | 19 1/8 | 19 3/8 | 19 5/8 | 19 7/8 | 20 1/8 | 20 3/8 | 20 5/8 | 20 7/8 | 21 1/8 | 21 3/8 |
| | | | | | | | | | | | |
| | | | | | | | | | | | |

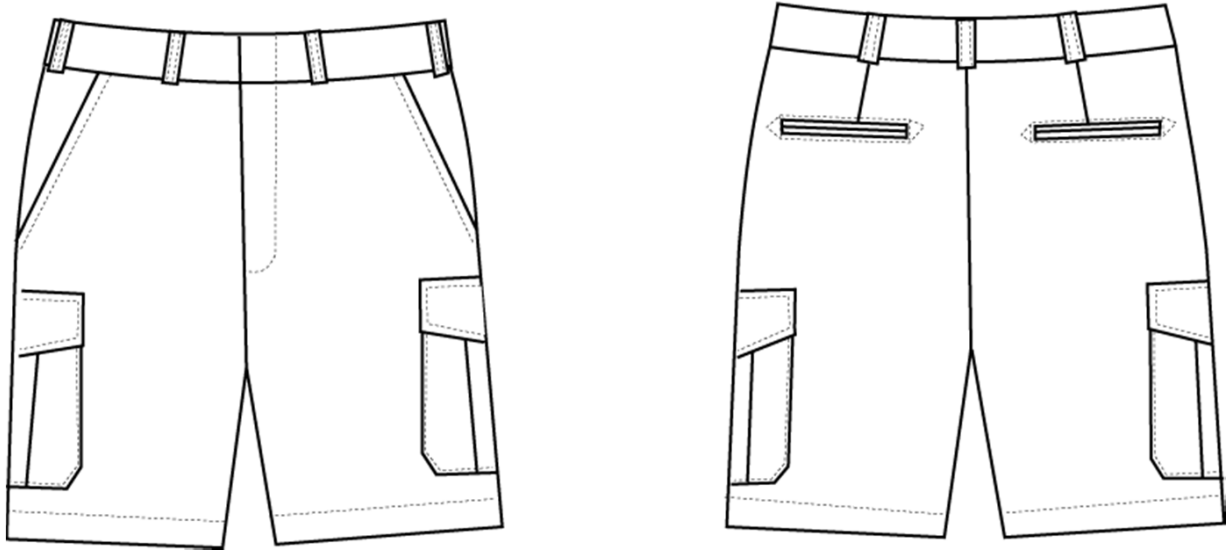
Style # I79P25 **Description** Uniform Shirts Short Sleeve Men



All Measurements are in inches.

| Description | 14 1/2 | 15 | 15 1/2 | 16 | 16 1/2 | 17 | 17 1/2 | 18 | 18 1/2 | 19 | 19 1/2 | 20 | 20 1/2 |
|----------------------------|--------|--------|--------|--------|--------|--------|--------|--------|--------|--------|--------|--------|--------|
| Collar (btn hole to btn) | 15 1/2 | 16 | 16 1/2 | 17 | 17 1/2 | 18 | 18 1/2 | 19 | 19 1/2 | 20 | 20 1/2 | 21 | 21 1/2 |
| Chest (1" Blw Armhole) | 42 | 44 | 46 | 48 | 50 | 52 | 54 | 56 | 58 | 60 | 62 | 64 | 66 |
| Waist | 39 | 41 | 43 | 45 | 47 | 49 | 51 | 53 | 56 | 59 | 62 | 64 | 66 |
| Sweep | 42 | 44 | 46 | 48 | 50 | 52 | 54 | 56 | 58 | 60 | 62 | 64 | 66 |
| Armhole Straight | 19 | 19 1/2 | 20 | 20 1/2 | 21 | 21 1/2 | 22 | 23 | 24 | 25 | 26 | 27 | 28 |
| Back Body Length CBN | 33 1/2 | 33 1/2 | 34 1/2 | 34 1/2 | 34 1/2 | 34 1/2 | 36 1/2 | 36 1/2 | 36 1/2 | 36 1/2 | 36 1/2 | 36 1/2 | 36 1/2 |
| Sleeve length (CB to Cuff) | 19 | 19 1/4 | 19 1/2 | 19 3/4 | 20 | 20 3/4 | 21 | 21 1/4 | 21 1/2 | 21 3/4 | 22 | 22 3/4 | 23 |
| Sleeve Opening | 15 1/2 | 16 1/2 | 17 | 17 | 18 | 18 | 19 | 19 | 20 | 20 | 21 | 21 | 22 |
| | | | | | | | | | | | | | |
| | | | | | | | | | | | | | |
| | | | | | | | | | | | | | |

Style # I69K03 Description Uniform Shorts Men



All Measurements are in inches.

| Description | 28 | 30 | 32 | 34 | 36 | 38 | 40 | 42 | 44 | 46 | 48 |
|-----------------------------------|--------|--------|--------|--------|--------|--------|--------|--------|--------|--------|--------|
| Waist | 29 | 31 | 33 | 35 | 37 | 39 | 41 | 43 | 45 | 47 | 49 |
| Seat 8" DOWN FR TOP OF W/B | 38 | 40 | 42 | 44 | 46 | 48 | 50 | 52 | 54 | 56 | 58 |
| Front Rise No Waist BAND | 9 1/2 | 9 3/4 | 10 | 10 1/4 | 10 1/2 | 10 3/4 | 11 | 11 1/4 | 11 1/2 | 11 3/4 | 12 |
| Back Rise No Waist BAND | 15 | 15 1/4 | 15 1/2 | 15 3/4 | 16 | 16 1/4 | 16 1/2 | 16 3/4 | 17 | 17 1/4 | 17 1/2 |
| Thigh 1" FROM CROTCH | 26 3/4 | 27 1/2 | 28 1/4 | 29 | 29 3/4 | 30 1/2 | 31 1/4 | 32 | 32 3/4 | 33 1/2 | 34 1/4 |
| Bottom Opening | 19 3/4 | 20 1/2 | 21 1/4 | 22 | 22 3/4 | 23 1/2 | 24 1/4 | 25 | 25 3/4 | 26 1/2 | 27 1/4 |
| Inseam | 11 | 11 | 11 | 11 | 11 | 11 | 11 | 11 | 11 | 11 | 11 |
| | | | | | | | | | | | |
| | | | | | | | | | | | |