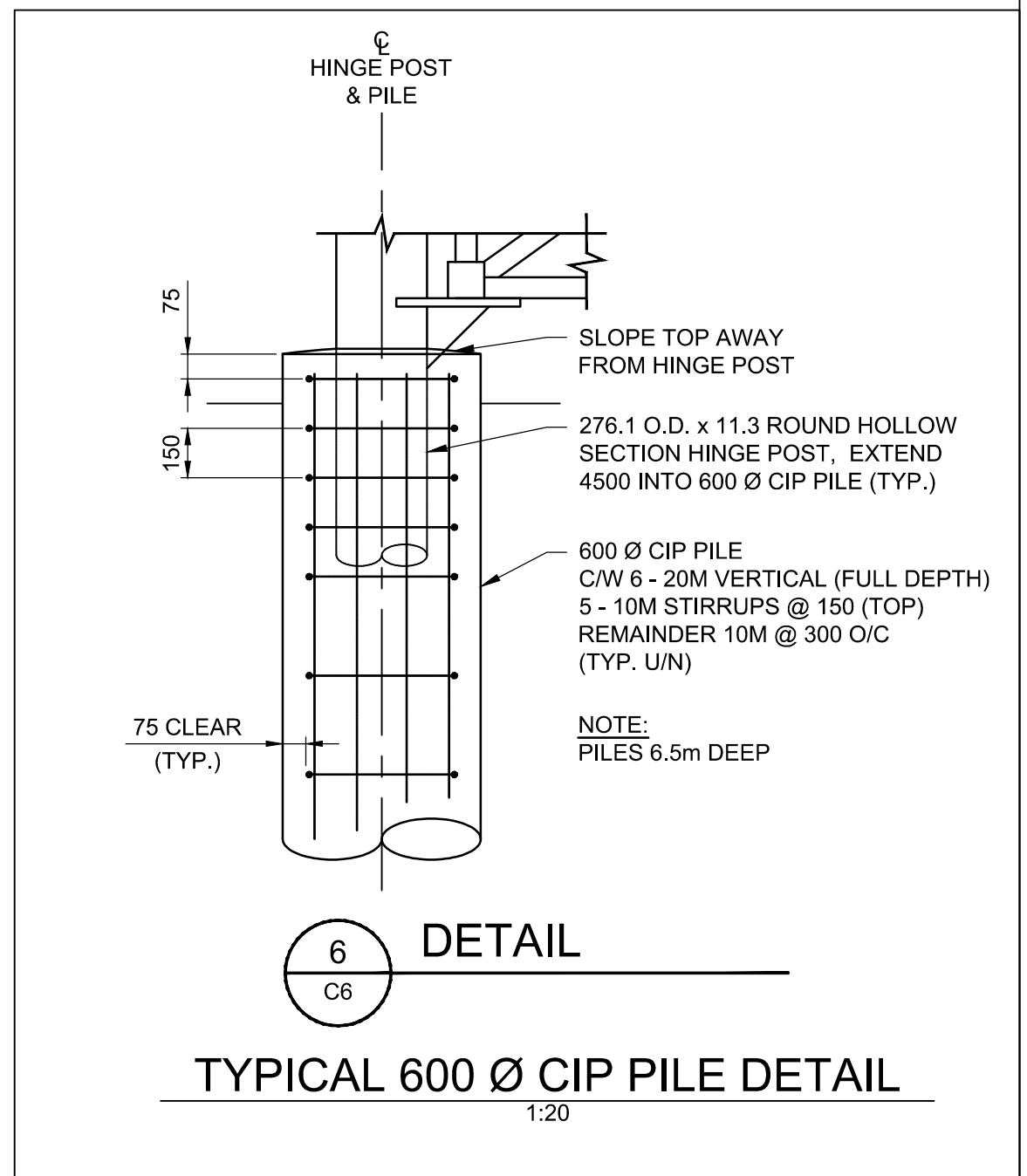
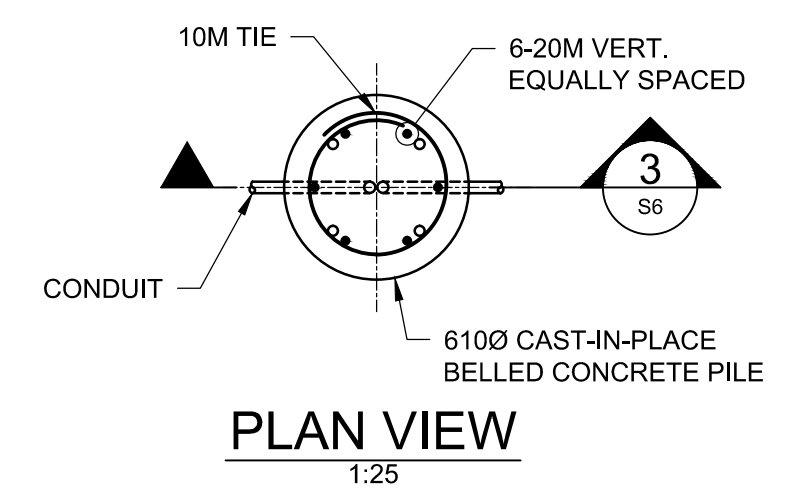


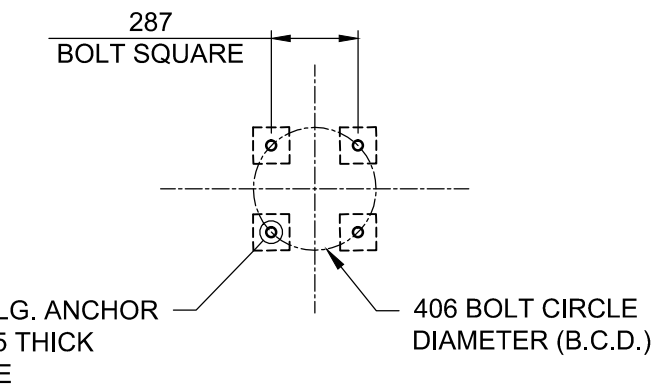
**2 PLAN - YARD WASTE BUNKERS**  
S2 1:40



**TYPICAL 600 Ø CIP PILE DETAIL**  
1:20



**PLAN VIEW**  
1:25



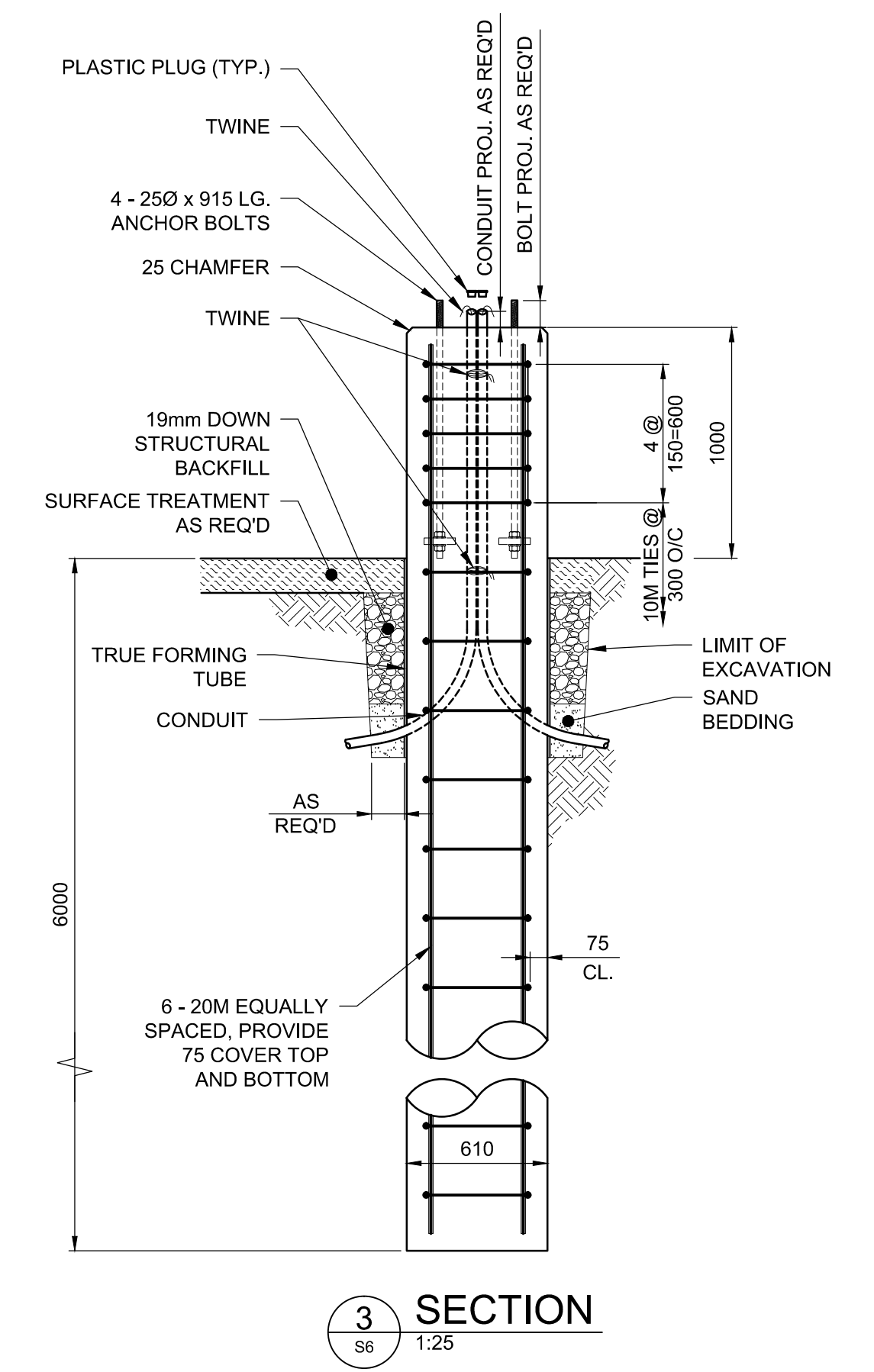
**ANCHOR BOLTS LAYOUT**  
1:25

ANCHOR BOLT ORIENTATION TO SUIT LIGHT STANDARD ORIENTATION, SEE LIGHT STANDARD LOCATIONS (PB01 TO PB 08) ON SHEET S2.

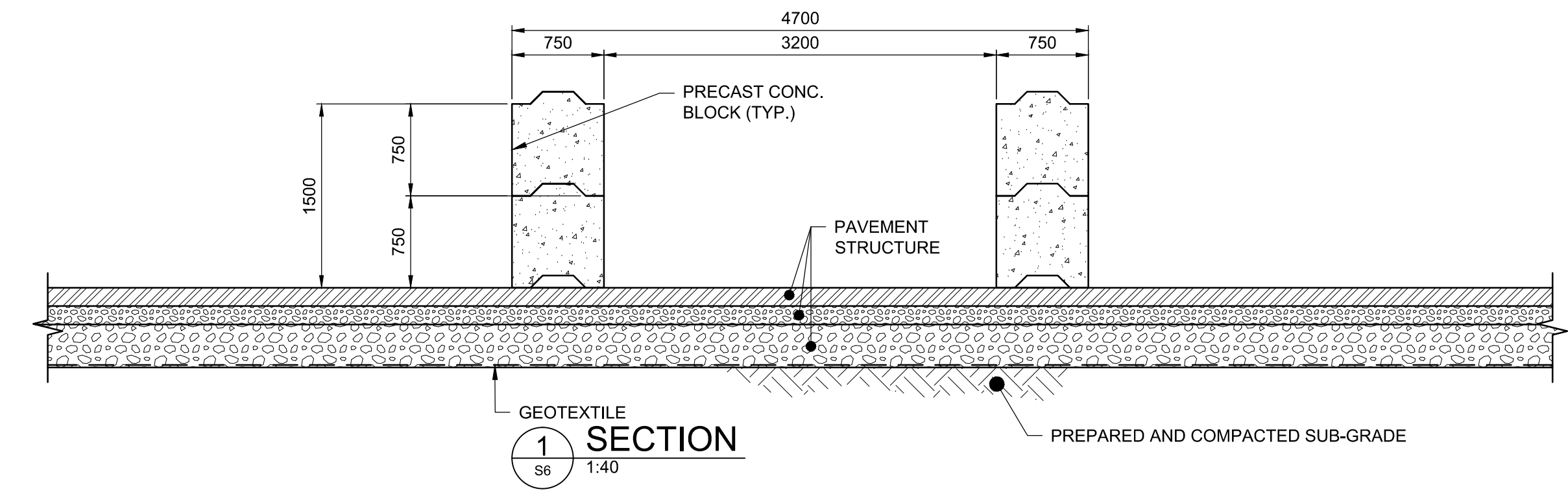
NOTE: VERIFY ANCHOR BOLT LAYOUT WITH POLE SUPPLIER

NOTE: ALL CONDUITS SHALL BE BUNDLED INTO A GROUP IN CENTER OF BASE, AND TIED TOGETHER BELOW THE TOP OF THE BASE PRIOR TO CONCRETE POUR. INSTALL PLASTIC PLUGS PRIOR TO CONCRETE POUR.

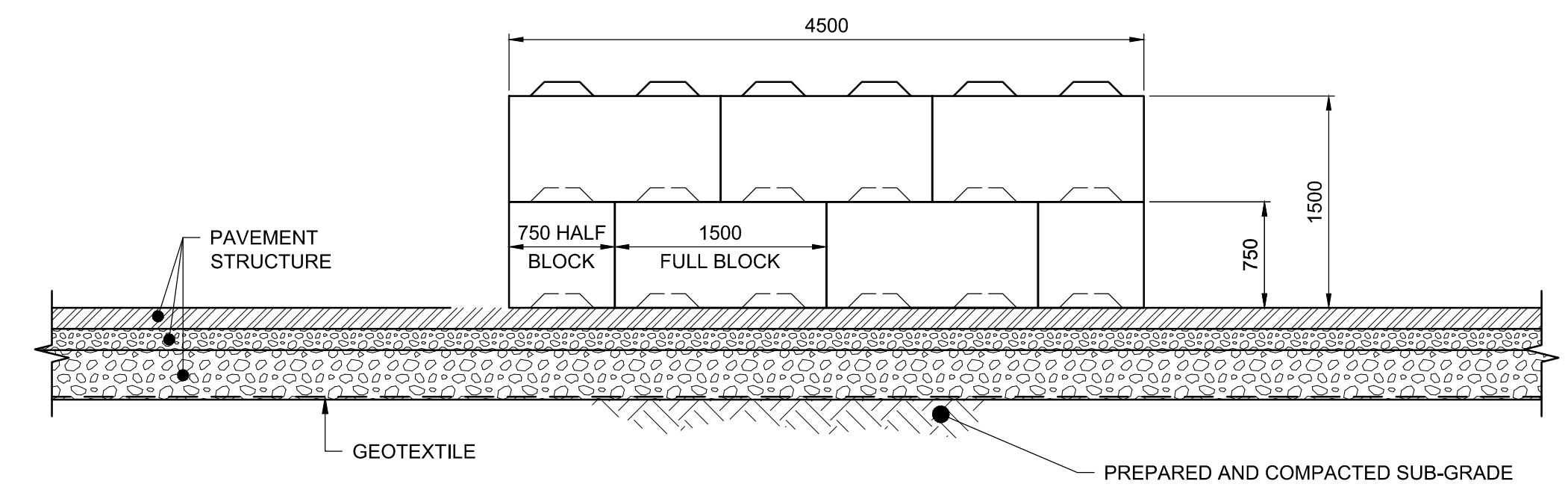
**CONCRETE POLE BASE FOR LIGHT STANDARDS**  
AS NOTED



**3 SECTION**  
S6 1:25



**1 SECTION**  
S6 1:40



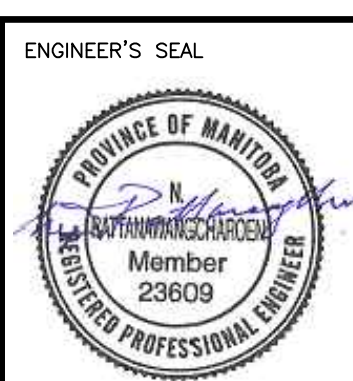
**2 INTERIOR BAY ELEVATION**  
S6 1:40

METRIC

WHOLE NUMBERS INDICATE MILLIMETRES  
DECIMALIZED NUMBERS INDICATE METRES



B.M. ELEV.	DESIGNED BY	WH
	DRAWN BY	PDR
	CHECKED BY	NR
	APPROVED BY	ARR
	HOR. SCALE	AS NOTED
	VERTICAL	
1 ISSUED FOR TENDER	16/03/04	ARR
NO. REVISIONS	DATE	BY



**THE CITY OF WINNIPEG**  
PUBLIC WORKS DEPARTMENT

4R WINNIPEG DEPOT  
PACIFIC AVENUE

**YARD WASTE BUNKER AND LIGHT STANDARD BASE DETAILS**

CITY DRAWING NUMBER: 1-0851A-S0006-001  
SHEET 14 OF 43  
CONSULTANT DRAWING NUMBER: S-6

CONSULTANT PROJECT NUMBER: 13-8224

C:\projects\win\working\_directory\active\4040\024576A\138224-09-STRUCT-COON-PACIFIC.dwg