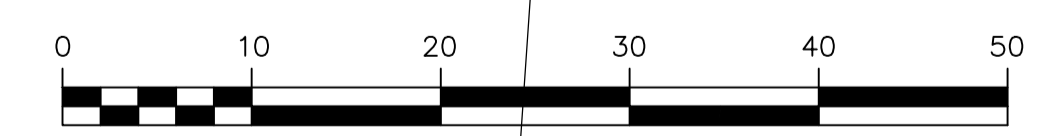
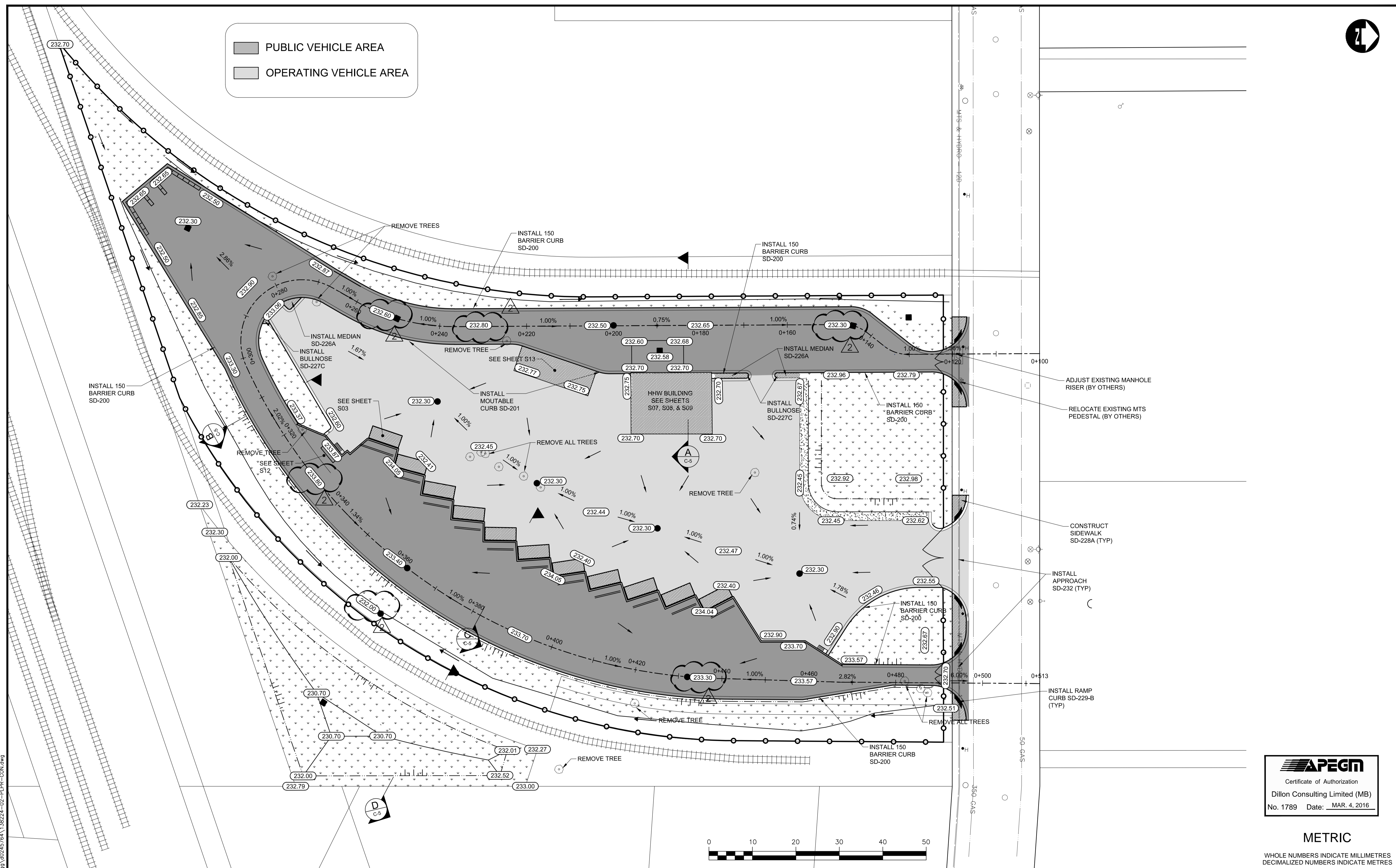


PUBLIC VEHICLE AREA
 OPERATING VEHICLE AREA



APEGM
 Certificate of Authorization
 Dillon Consulting Limited (MB)
 No. 1789 Date: MAR. 4, 2016

METRIC

WHOLE NUMBERS INDICATE MILLIMETRES
DECIMALIZED NUMBERS INDICATE METRES

150 WM	WATERMAIN	150 WM	M.T.S.	M.T.S.	150 mm W.M.	WATERMAIN	150 mm W.M.
⊕	HYDRANT VALVE	⊕	CONCRETE	CONCRETE	+	HYDRANT VALVE	+
⊗	LAND DRAINAGE SEWER	⊗	ASPHALT	ASPHALT	+	LAND DRAINAGE SEWER	+
300 LDS	300 LDS	300 LDS	PLANING	PLANING	300 mm L.D.S.	300 mm L.D.S.	300 mm L.D.S.
250 WWS	WASTE WATER SEWER	250 WWS	SIDEWALK	SIDEWALK	250 mm W.W.S.	WASTE WATER SEWER	250 mm W.W.S.
○	MANHOLE	●	PAVING STONES	PAVING STONES	○	PROPERTY LINE	○
○	CATCH BASIN	●	PROPERTY LINE	PROPERTY LINE	—	SURVEY BAR	—
○	TEST HOLES	⊕	SURVEY BAR	SURVEY BAR	—	CURB RAMP	—
○	JUNCTIONS	⊕	CURB RAMP	CURB RAMP	—	DITCH	—
○	CULVERT	—	DITCH	DITCH	—	SWALE	—
100 GAS	GAS	100 GAS	SWALE	SWALE	—		
EXISTING	LEGEND-PLAN	PROPOSED	EXISTING	LEGEND-PLAN	PROPOSED	EXISTING	LEGEND-PROFILE

UNDERGROUND STRUCTURES
 SUPPLY, U/G STRUCTURES COMMITTEE DATE
 NOTE:
 LOCATION OF UNDERGROUND STRUCTURES AS SHOWN ARE BASED ON THE BEST INFORMATION AVAILABLE BUT NO GUARANTEE IS GIVEN THAT ALL EXISTING UTILITIES ARE SHOWN OR THAT THE GIVEN LOCATIONS ARE EXACT. CONFIRMATION OF EXISTENCE AND EXACT LOCATION OF ALL SERVICES MUST BE OBTAINED FROM THE INDIVIDUAL UTILITIES BEFORE PROCEEDING WITH CONSTRUCTION.

B.M. ELEV.			
2	ISSUED FOR ADDENDUM #1	16/03/14	ARR
1	ISSUED FOR TENDER	16/03/04	ARR
NO.	REVISIONS	DATE	BY

DESIGNED BY	WPN
DRAWN BY	GLG
CHECKED BY	
APPROVED BY	ARR
HOR. SCALE	1:400
VERTICAL	

DILLON CONSULTING
 RELEASED FOR CONSTRUCTION
 DATE

ENGINEER'S SEAL
 PROVINCE OF MANITOBA
 W.P. NAIRN
 MAR 2, 2016
 Member 34277
 REGISTERED PROFESSIONAL ENGINEER
 CONSULTANT PROJECT NUMBER
 13-8224

THE CITY OF WINNIPEG
 WATER AND WASTE DEPARTMENT
 4R WINNIPEG DEPOT
 PACIFIC AVENUE
GRADING PLAN
 CITY DRAWING NUMBER
 1-0851A-C0002-001
 SHEET 3 OF 43
 CONSULTANT DRAWING NUMBER
C2

C:\projects\win\working_directory\active_4099\40245764\138224-02-PLR-COON.dwg