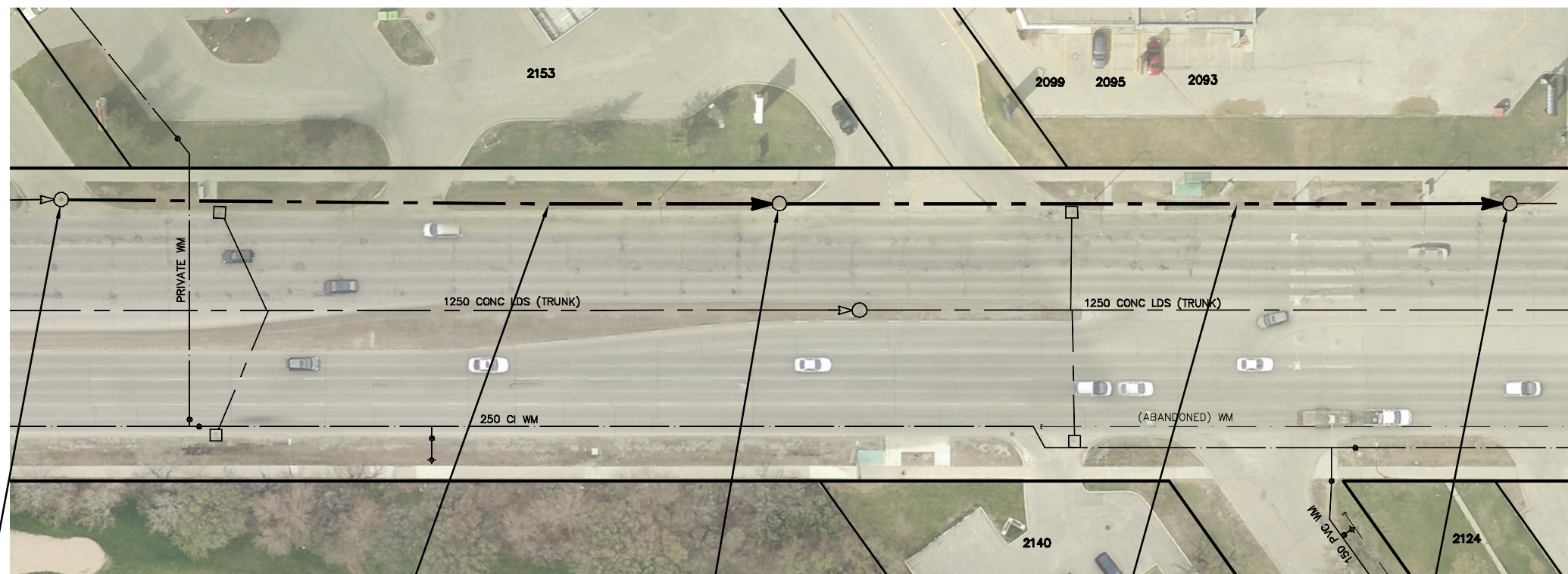
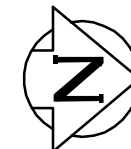


PEMBINA HIGHWAY



S-MH60014153
RIM 232.73
INV N 227.00
INV S 227.00

**90.50 OF 300 CONC WWS
TO BE LINED S-MA60016450
(PARTIALLY DETERIORATED)**

S-MH60014136
RIM 232.83
INV N 226.83
INV S 226.83

**93.80 OF 300 CONC WWS
TO BE LINED S-MA60016433
(PARTIALLY DETERIORATED)**

S-MH60014180
RIM 232.68
INV N 226.45
INV S 226.70

SEWER JUNCTION INFORMATION FROM SEWER VIDEO INSPECTION		
SEWER ID S-MA60016450		
DISTANCE FROM MH ID S-MH60014153		
DISTANCE	DIAMETER	CLOCK
39.8	150	12
57.2	150	12

SEWER JUNCTION INFORMATION FROM SEWER VIDEO INSPECTION		
SEWER ID S-MA60016433		
DISTANCE FROM MH ID S-MH60014136		
DISTANCE	DIAMETER	CLOCK
2.3	150	10
12.3	150	10
14.0	150	12
43.8	150	12
49.5	150	2
60.3	150	2
82.2	150	10

THATCHER DR

WARNING

IF POWER EQUIPMENT OR EXPLOSIVES ARE TO BE USED FOR EXCAVATION ON THIS PROJECT THE CONTRACTOR MUST:

- 1) NOTIFY THE GAS COMPANY OF THE PROPOSED LOCATION OF EXCAVATION.
- 2) TAKE PRECAUTION TO AVOID DAMAGE TO GAS COMPANY INSTALLATIONS.

SEE PROVINCIAL REGULATION 210/72 FOR DETAILS

METRIC
WHOLE NUMBERS INDICATE MILLIMETRES
DECIMALIZED NUMBERS INDICATE METRES



LOCATION APPROVED
UNDERGROUND STRUCTURES

SUPV. U/G STRUCTURES COMMITTEE DATE

NOTE:

LOCATION OF UNDERGROUND STRUCTURES AS SHOWN ARE BASED ON THE BEST INFORMATION AVAILABLE BUT NO GUARANTEE IS GIVEN THAT ALL EXISTING UTILITIES ARE SHOWN OR THAT THE GIVEN LOCATIONS ARE EXACT. CONFIRMATION OF EXISTENCE AND EXACT LOCATION OF ALL SERVICES MUST BE OBTAINED FROM THE INDIVIDUAL UTILITIES BEFORE PROCEEDING WITH CONSTRUCTION.

B.M. ELEV.			
CONSTRUCTION COMPLETION DATE: YYYY MM DD			
NO.	REVISIONS	DATE	BY

DESIGNED BY	SC	CHECKED BY	SC
DRAWN BY	MA	APPROVED BY	KZ
SCALE:		RELEASED FOR CONSTRUCTION	
HORIZONTAL	1:750		
VERTICAL			
DATE	2014 10 08	DATE	
PLOT DATE:	2014 10 08		

ENGINEER'S SEAL

**ORIGINAL SIGNED BY
S.R.J. COURNOYER
14-10-07**

CONSULTANT DRAWING NUMBER



THE CITY OF WINNIPEG
WATER AND WASTE DEPARTMENT
ENGINEERING DIVISION

**2014 SEWER RENEWALS
BY CIPP LINING - CONTRACT 12
PEMBINA HIGHWAY**

**1ST MH N OF THATCHER DRIVE TO
3RD MH N OF SOUTHPARK DRIVE**

SHEET 40 OF 66

CITY DRAWING NUMBER

10851