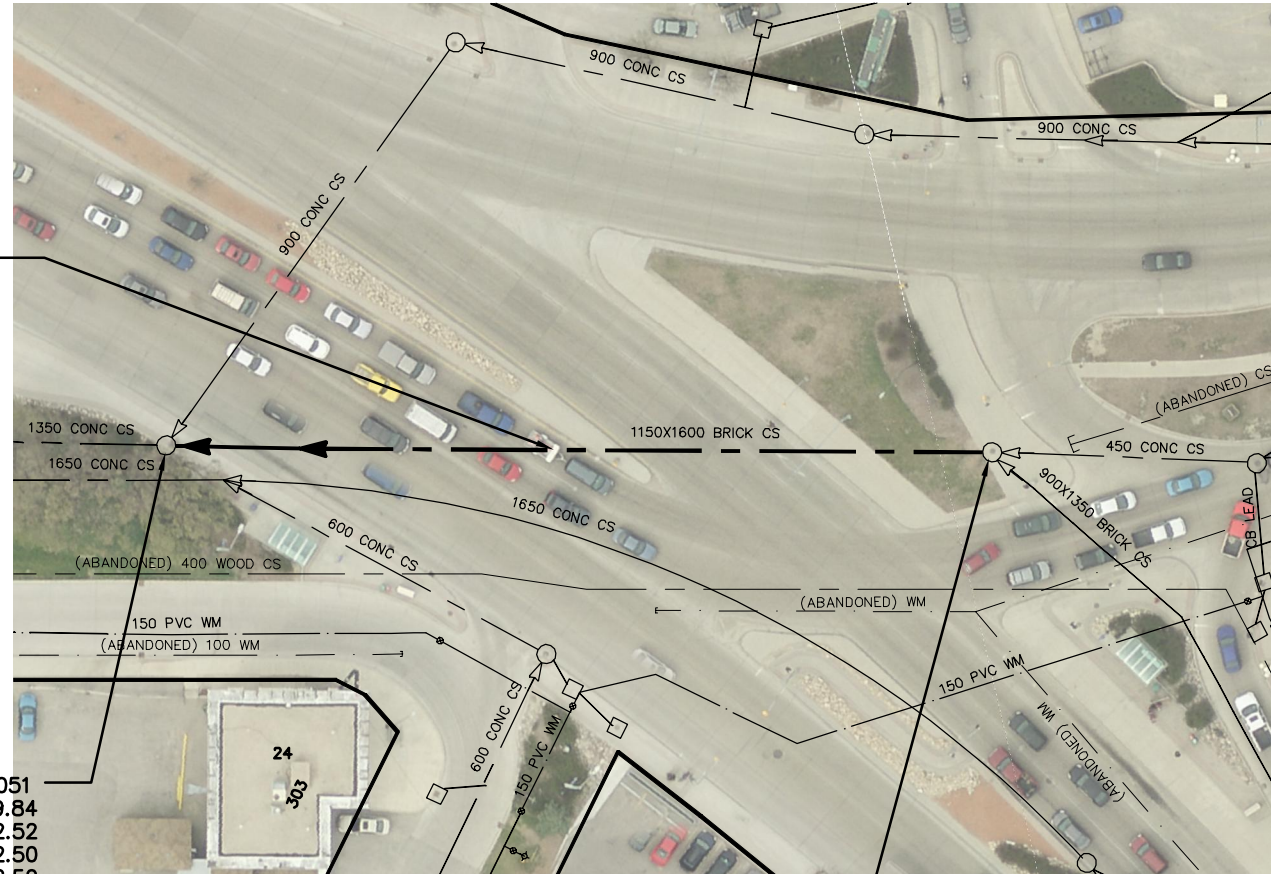


MARION STREET



81.70 OF 1600X1150 BRICK CS
TO BE LINED S-MA50008363
(PARTIALLY DETERIORATED)

SEWER JUNCTION INFORMATION FROM SEWER VIDEO INSPECTION		
SEWER ID S-MA50008363		
DISTANCE FROM MH ID S-MH50007050		
DISTANCE	DIAMETER	CLOCK
17.6	150	1
17.6	150	11
24.9	150	1
25.2	150	11
32.2	150	1
32.4	150	11
39.3	300	11
39.8	150	11
39.8	150	1
47.8	150	11
48.0	150	1
63.0	300	12
80.8	150	12
81.0	150	12

S-MH50007051
RIM 229.84
INV E 222.52
INV E 222.50
INV W 222.50

S-MH50007050
RIM 229.03
INV E 223.14
INV S 222.93
INV W 222.93

LILIAN AV

ST MARYS RD

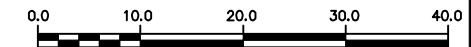
WARNING

IF POWER EQUIPMENT OR EXPLOSIVES
ARE TO BE USED FOR EXCAVATION ON
THIS PROJECT THE CONTRACTOR MUST:

- 1) NOTIFY THE GAS COMPANY OF THE
PROPOSED LOCATION OF EXCAVATION.
- 2) TAKE PRECAUTION TO AVOID DAMAGE
TO GAS COMPANY INSTALLATIONS.

SEE PROVINCIAL REGULATION 210/72 FOR DETAILS

METRIC
WHOLE NUMBERS INDICATE MILLIMETRES
DECIMALIZED NUMBERS INDICATE METRES



LOCATION APPROVED
UNDERGROUND STRUCTURES

B.M.
ELEV.

CONSTRUCTION COMPLETION DATE: YYYY MM DD

SUPV. U/G STRUCTURES COMMITTEE DATE

NOTE:

LOCATION OF UNDERGROUND STRUCTURES AS
SHOWN ARE BASED ON THE BEST INFORMATION
AVAILABLE BUT NO GUARANTEE IS GIVEN THAT ALL
EXISTING UTILITIES ARE SHOWN OR THAT THE GIVEN
LOCATIONS ARE EXACT. CONFIRMATION OF
EXISTENCE AND EXACT LOCATION OF ALL
SERVICES MUST BE OBTAINED FROM THE INDIVIDUAL
UTILITIES BEFORE PROCEEDING WITH CONSTRUCTION.

NO.	REVISIONS	DATE	BY

DESIGNED BY	SC	CHECKED BY	SC
DRAWN BY	MA	APPROVED BY	KZ
SCALE:		RELEASED FOR CONSTRUCTION	
HORIZONTAL	1:750		
VERTICAL			
DATE	2014 10 08	DATE	

ENGINEER'S SEAL

ORIGINAL
SIGNED BY
S.R.J.
COURNOYER
14-10-07

CONSULTANT DRAWING NUMBER



THE CITY OF WINNIPEG
WATER AND WASTE DEPARTMENT
ENGINEERING DIVISION

2014 SEWER RENEWALS
BY CIPP LINING – CONTRACT 12
MARION STREET
MH AT ST MARYS ROAD (E OF CL) TO
1ST MH W OF LILLIAN AVENUE

SHEET 39 OF 66

CITY DRAWING NUMBER

10850