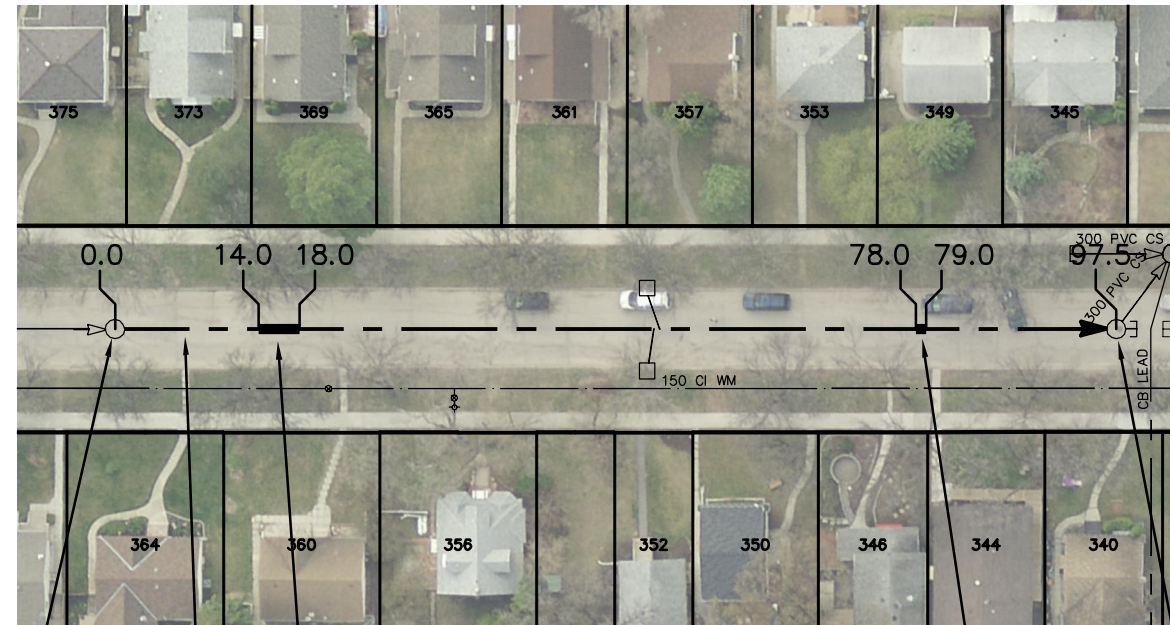


LINDSAY STREET



SEWER JUNCTION INFORMATION FROM SEWER VIDEO INSPECTION		
SEWER ID S-MA60008075		
DISTANCE FROM MH ID S-MH60006585		
DISTANCE	DIAMETER	CLOCK
2.9	150	10
10.6	150	2
10.7	150	10
17.8	150	10
25.0	150	2
33.6	150	10
39.4	150	3
47.5	150	10
50.0	150	1
52.6	150	1
53.2	150	10
55.7	150	2
62.6	150	2
63.4	150	10
70.9	150	11
78.6	150	2
83.4	150	1
84.1	150	10

S-MH60006585
RIM 233.42
INV N 229.92
INV S 229.92

97.50 OF 300 CLAY CS
TO BE LINED S-MA60008075
(FULLY DETERIORATED)

4.0 OF 300 SDR 35 PVC
SEWER REPAIR (SD-022B)
INCLUDING 1 SERVICE CONNECTION
(WORK DONE BY OTHER)

S-MH60006588
RIM 233.38
INV N 229.79
INV S 229.79
INV W 229.73

1.0 OF 300 SDR 35 PVC
SEWER REPAIR (SD-022A)
INCLUDING 1 SERVICE CONNECTION
(WORK DONE BY OTHER)

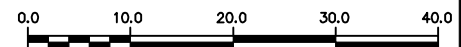
WARNING

IF POWER EQUIPMENT OR EXPLOSIVES ARE TO BE USED FOR EXCAVATION ON THIS PROJECT THE CONTRACTOR MUST:

- 1) NOTIFY THE GAS COMPANY OF THE PROPOSED LOCATION OF EXCAVATION.
- 2) TAKE PRECAUTION TO AVOID DAMAGE TO GAS COMPANY INSTALLATIONS.

SEE PROVINCIAL REGULATION 210/72 FOR DETAILS

METRIC
WHOLE NUMBERS INDICATE MILLIMETRES
DECIMALIZED NUMBERS INDICATE METRES



LOCATION APPROVED
UNDERGROUND STRUCTURES

SUPV. U/G STRUCTURES COMMITTEE DATE

NOTE:

LOCATION OF UNDERGROUND STRUCTURES AS SHOWN ARE BASED ON THE BEST INFORMATION AVAILABLE BUT NO GUARANTEE IS GIVEN THAT ALL EXISTING UTILITIES ARE SHOWN OR THAT THE GIVEN LOCATIONS ARE EXACT. CONFIRMATION OF EXISTENCE AND EXACT LOCATION OF ALL SERVICES MUST BE OBTAINED FROM THE INDIVIDUAL UTILITIES BEFORE PROCEEDING WITH CONSTRUCTION.

B.M. ELEV.			
CONSTRUCTION COMPLETION DATE: YYYY MM DD			
NO.	REVISIONS	DATE	BY

DESIGNED BY	SC	CHECKED BY	SC
DRAWN BY	MA	APPROVED BY	KZ
SCALE:		RELEASED FOR CONSTRUCTION	
HORIZONTAL	1:750		
VERTICAL			
DATE	2014 10 08	DATE	
PLOT DATE:	2014 10 08		

ENGINEER'S SEAL

ORIGINAL
SIGNED BY
S.R.J.
COURNOYER
14-10-07

CONSULTANT DRAWING NUMBER



THE CITY OF WINNIPEG
WATER AND WASTE DEPARTMENT
ENGINEERING DIVISION

2014 SEWER RENEWALS
BY CIPP LINING - CONTRACT 12
LINDSAY STREET
1ST MH N OF GROSVENOR AVENUE TO
2ND MH N OF GROSVENOR AVENUE

SHEET 37 OF 66

CITY DRAWING NUMBER

10848