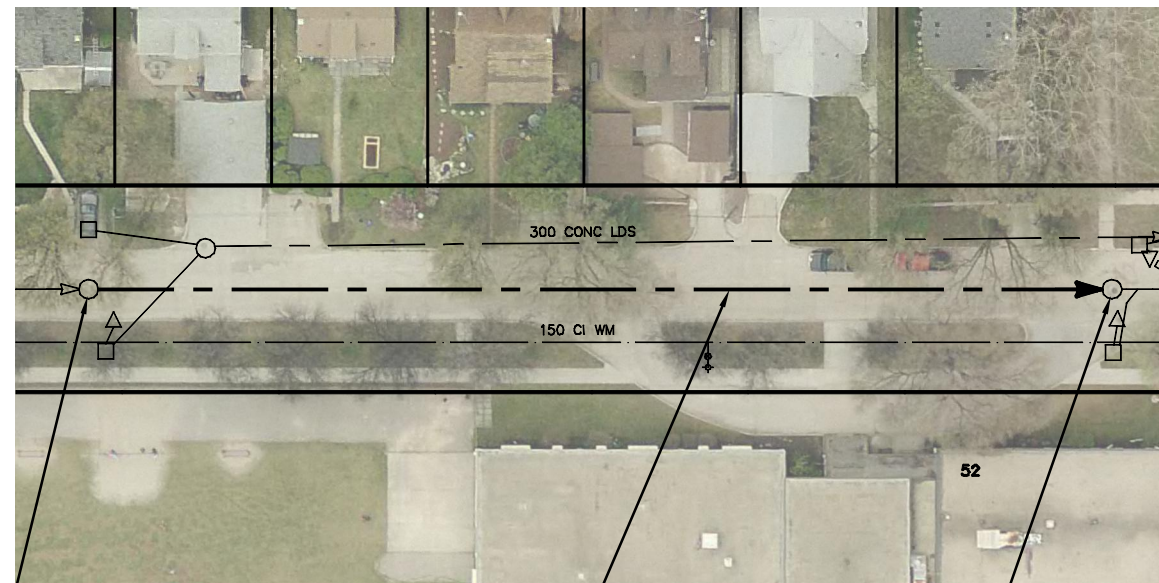


BIRCHDALE AVENUE



SEWER JUNCTION INFORMATION FROM SEWER VIDEO INSPECTION		
SEWER ID S-MA50003624		
DISTANCE FROM MH ID S-MH50003106		
DISTANCE	DIAMETER	CLOCK
4.7	150	10
6.5	150	2
19.4	150	10
34.8	150	10
48.7	150	2
50.5	150	10
57.1	150	2
60.8	150	2
65.3	150	9
78.2	150	3
94.6	150	2
95.4	150	9

S-MH50003106
RIM 230.63
INV N 227.37
INV S 227.37

98.9 OF 300 CONC CS
TO BE LINED S-MA50003624
(PARTIALLY DETERIORATED)

S-MH50003119
RIM 230.49
INV N 227.13
INV S 227.13

WARNING

IF POWER EQUIPMENT OR EXPLOSIVES ARE TO BE USED FOR EXCAVATION ON THIS PROJECT THE CONTRACTOR MUST:

- 1) NOTIFY THE GAS COMPANY OF THE PROPOSED LOCATION OF EXCAVATION.
- 2) TAKE PRECAUTION TO AVOID DAMAGE TO GAS COMPANY INSTALLATIONS.

SEE PROVINCIAL REGULATION 210/72 FOR DETAILS

METRIC
WHOLE NUMBERS INDICATE MILLIMETRES
DECIMALIZED NUMBERS INDICATE METRES



LOCATION APPROVED
UNDERGROUND STRUCTURES

SUPV. U/G STRUCTURES COMMITTEE DATE

NOTE:
LOCATION OF UNDERGROUND STRUCTURES AS SHOWN ARE BASED ON THE BEST INFORMATION AVAILABLE BUT NO GUARANTEE IS GIVEN THAT ALL EXISTING UTILITIES ARE SHOWN OR THAT THE GIVEN LOCATIONS ARE EXACT. CONFIRMATION OF EXISTENCE AND EXACT LOCATION OF ALL SERVICES MUST BE OBTAINED FROM THE INDIVIDUAL UTILITIES BEFORE PROCEEDING WITH CONSTRUCTION.

NO.	REVISIONS	DATE	BY

DESIGNED BY SC		CHECKED BY SC	
DRAWN BY MA		APPROVED BY KZ	
SCALE: HORIZONTAL 1:750 VERTICAL		RELEASED FOR CONSTRUCTION	
DATE 2014 10 08		DATE	
PLOT DATE: 2014 10 08			

ENGINEER'S SEAL

ORIGINAL SIGNED BY S.R.J. COURNOYER 14-10-07

CONSULTANT DRAWING NUMBER



2014 SEWER RENEWALS
BY CIPP LINING - CONTRACT 12
BIRCHDALE AVENUE
1ST MH N OF LYNDALE DRIVE TO
2ND MH N OF LYNDALE DRIVE

SHEET **6** OF **66**
CITY DRAWING NUMBER
10817