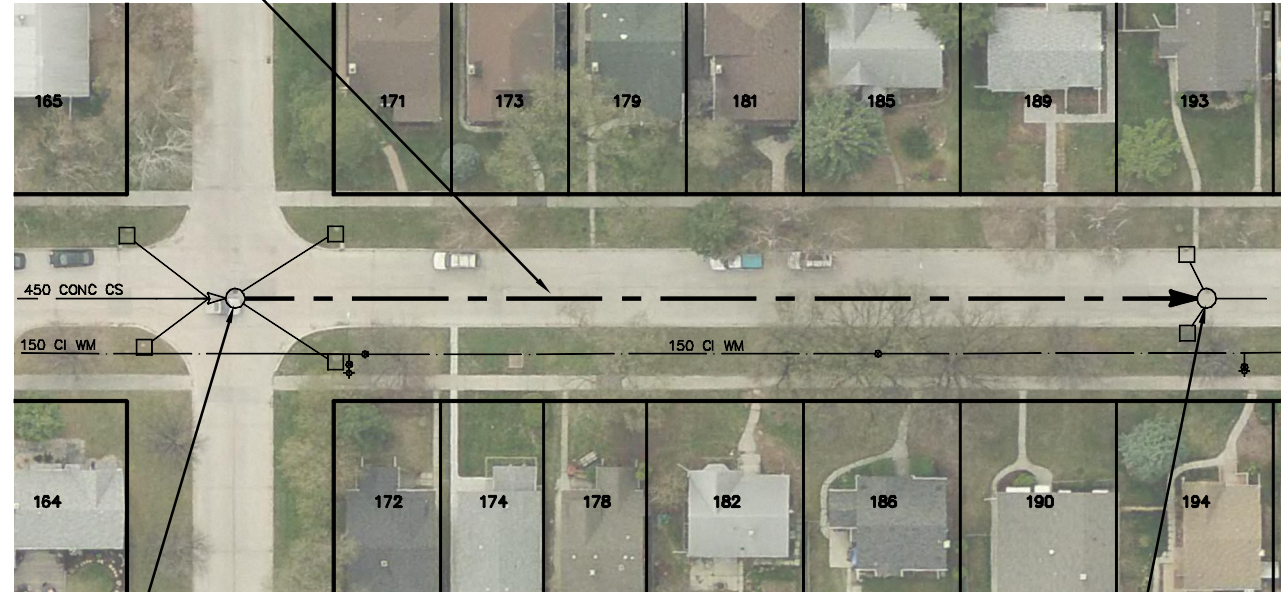


BIRCHDALE AVENUE

94.7 OF 450 CONC CS
TO BE LINED S-MA50003713
(PARTIALLY DETERIORATED)



S-MH50003203
RIM 229.32
INV N 225.01
INV S 225.01

KIRKDALE ST

S-MH50003204
RIM 229.09
INV N 224.95
INV S 224.96

SEWER JUNCTION INFORMATION FROM SEWER VIDEO INSPECTION		
SEWER ID S-MA50003713		
DISTANCE FROM MH ID S-MH50003203		
DISTANCE	DIAMETER	CLOCK
18.1	150	1
19.6	200	11
28.2	150	2
29.5	150	11
38.0	150	1
42.5	150	11
53.5	150	1
54.4	150	11
71.8	150	1
81.3	150	11
84.7	150	1

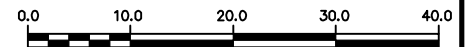
WARNING

IF POWER EQUIPMENT OR EXPLOSIVES ARE TO BE USED FOR EXCAVATION ON THIS PROJECT THE CONTRACTOR MUST:

- 1) NOTIFY THE GAS COMPANY OF THE PROPOSED LOCATION OF EXCAVATION.
- 2) TAKE PRECAUTION TO AVOID DAMAGE TO GAS COMPANY INSTALLATIONS.

SEE PROVINCIAL REGULATION 210/72 FOR DETAILS

METRIC
WHOLE NUMBERS INDICATE MILLIMETRES
DECIMALIZED NUMBERS INDICATE METRES



LOCATION APPROVED
UNDERGROUND STRUCTURES

SUPV. U/G STRUCTURES COMMITTEE DATE

NOTE:
LOCATION OF UNDERGROUND STRUCTURES AS SHOWN ARE BASED ON THE BEST INFORMATION AVAILABLE BUT NO GUARANTEE IS GIVEN THAT ALL EXISTING UTILITIES ARE SHOWN OR THAT THE GIVEN LOCATIONS ARE EXACT. CONFIRMATION OF EXISTENCE AND EXACT LOCATION OF ALL SERVICES MUST BE OBTAINED FROM THE INDIVIDUAL UTILITIES BEFORE PROCEEDING WITH CONSTRUCTION.

B.M. ELEV.			
CONSTRUCTION COMPLETION DATE: YYYY MM DD			
NO.	REVISIONS	DATE	BY

DESIGNED BY	SC	CHECKED BY	SC
DRAWN BY	MA	APPROVED BY	KZ
SCALE:	1:750	RELEASED FOR CONSTRUCTION	
HORIZONTAL			
VERTICAL			
DATE	2014 10 08	DATE	
PLOT DATE:	2014 10 08		

ENGINEER'S SEAL

ORIGINAL SIGNED BY
S.R.J. COURNOYER
14-10-07

CONSULTANT DRAWING NUMBER
-



THE CITY OF WINNIPEG
WATER AND WASTE DEPARTMENT
ENGINEERING DIVISION

2014 SEWER RENEWALS
BY CIPP LINING - CONTRACT 12
BIRCHDALE AVENUE
MH AT KIRKDALE STREET TO
1ST MH N OF KIRKDALE STREET

SHEET **5** OF **66**
CITY DRAWING NUMBER

10816