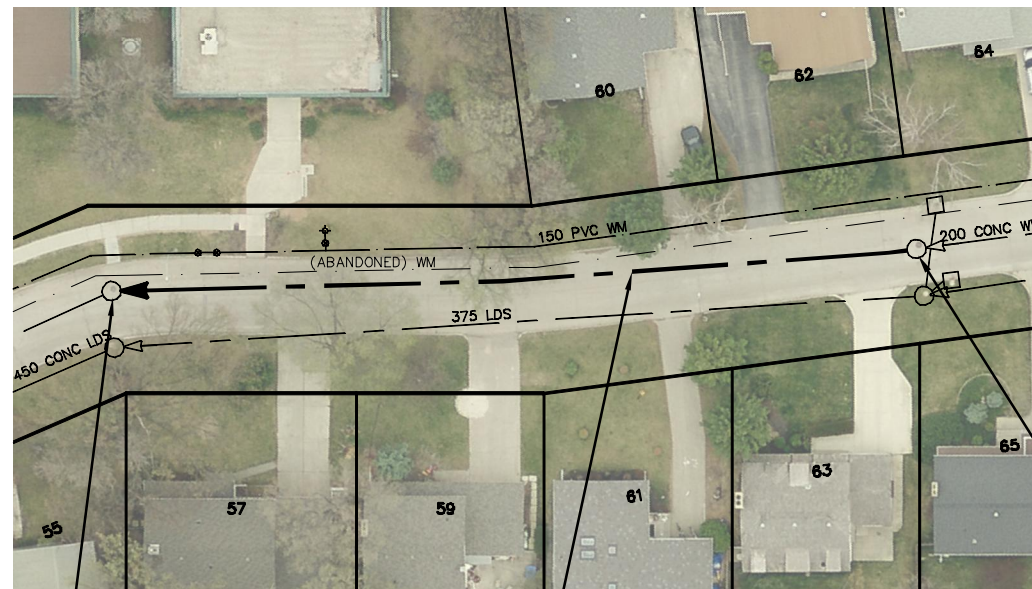
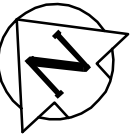


AGASSIZ DRIVE



S-MH60013870
RIM 231.96
INV S 228.43
INV W 228.42

78.60 OF 200 CONC WWS
TO BE LINED S-MA60016114
(PARTIALLY DETERIORATED)

S-MH60013879
RIM 231.78
INV S 229.15
INV N 229.12

SEWER JUNCTION INFORMATION FROM SEWER VIDEO INSPECTION		
SEWER ID S-MA60016114		
DISTANCE FROM MH ID S-MH60013879		
DISTANCE	DIAMETER	CLOCK
9.0	150	3
9.7	150	9
26.5	150	10
27.6	150	2
47.9	150	9
60.7	150	2
68.4	150	2
70.1	150	9

WARNING

IF POWER EQUIPMENT OR EXPLOSIVES ARE TO BE USED FOR EXCAVATION ON THIS PROJECT THE CONTRACTOR MUST:

- 1) NOTIFY THE GAS COMPANY OF THE PROPOSED LOCATION OF EXCAVATION.
- 2) TAKE PRECAUTION TO AVOID DAMAGE TO GAS COMPANY INSTALLATIONS.

SEE PROVINCIAL REGULATION 210/72 FOR DETAILS

METRIC

WHOLE NUMBERS INDICATE MILLIMETRES
DECIMALIZED NUMBERS INDICATE METRES



LOCATION APPROVED
UNDERGROUND STRUCTURES

SUPV. U/G STRUCTURES COMMITTEE _____ DATE _____

NOTE:

LOCATION OF UNDERGROUND STRUCTURES AS SHOWN ARE BASED ON THE BEST INFORMATION AVAILABLE BUT NO GUARANTEE IS GIVEN THAT ALL EXISTING UTILITIES ARE SHOWN OR THAT THE GIVEN LOCATIONS ARE EXACT. CONFIRMATION OF EXISTENCE AND EXACT LOCATION OF ALL SERVICES MUST BE OBTAINED FROM THE INDIVIDUAL UTILITIES BEFORE PROCEEDING WITH CONSTRUCTION.

B.M. ELEV.			
CONSTRUCTION COMPLETION DATE: YYYY MM DD			
NO.	REVISIONS	DATE	BY

DESIGNED BY	SC	CHECKED BY	SC
DRAWN BY	MA	APPROVED BY	KZ
SCALE:	1:750	RELEASED FOR CONSTRUCTION	
HORIZONTAL			
VERTICAL			
DATE	2014 10 08	DATE	
PLOT DATE:	2014 10 08		

ENGINEER'S SEAL

ORIGINAL SIGNED BY
S.R.J. COURNOYER
14-10-07

CONSULTANT DRAWING NUMBER
-



THE CITY OF WINNIPEG

WATER AND WASTE DEPARTMENT
ENGINEERING DIVISION

2014 SEWER RENEWALS
BY CIPP LINING - CONTRACT 12
AGASSIZ DRIVE
1ST MH SE OF WEDGEWOOD DRIVE TO
1ST MH NW OF AGASSIZ DRIVE

SHEET 2 OF 66

CITY DRAWING NUMBER

10813