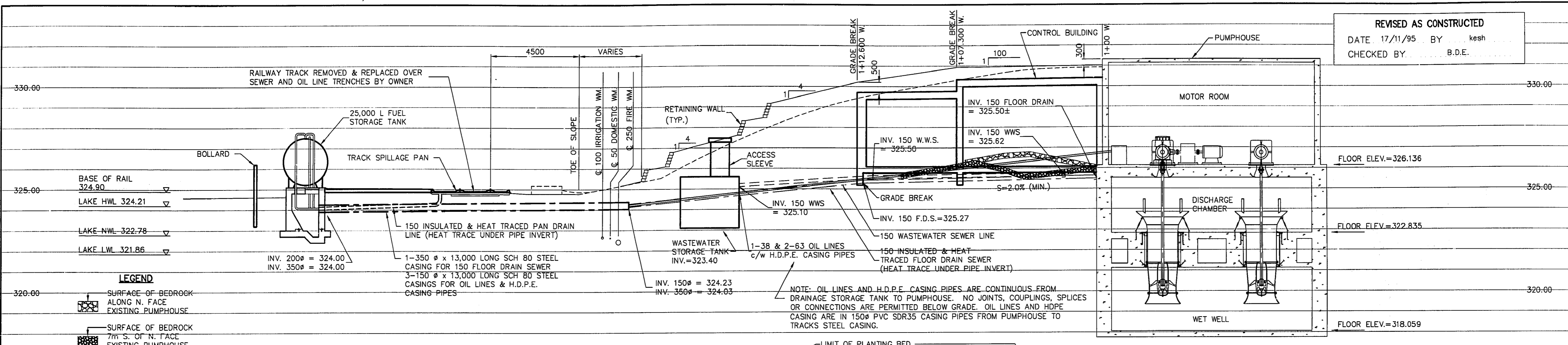
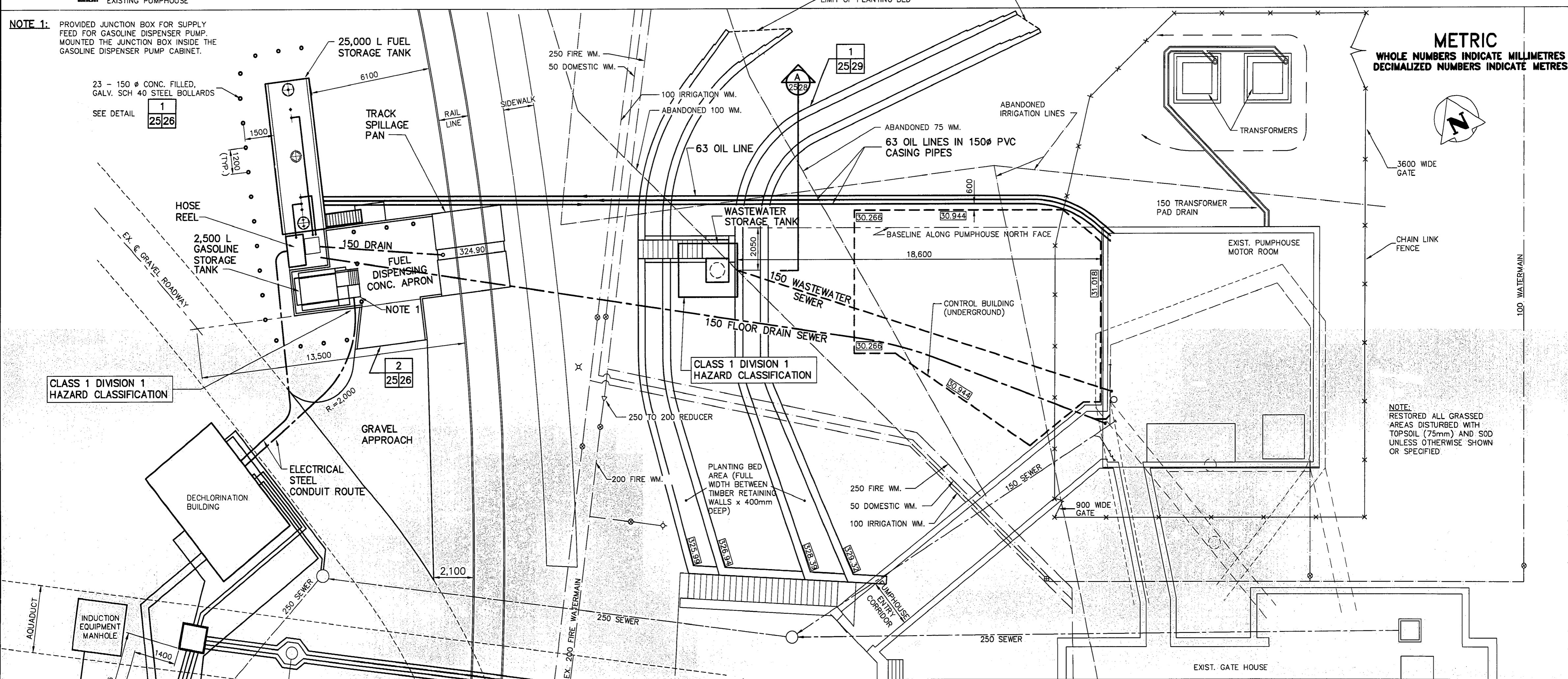


REVISED AS CONSTRUCTED
 DATE 17/11/95 BY kesh
 CHECKED BY B.D.E.



LEGEND
 SURFACE OF BEDROCK ALONG N. FACE EXISTING PUMPHOUSE
 SURFACE OF BEDROCK 7m S. OF N. FACE EXISTING PUMPHOUSE

NOTE 1: PROVIDED JUNCTION BOX FOR SUPPLY FEED FOR GASOLINE DISPENSER PUMP. MOUNTED THE JUNCTION BOX INSIDE THE GASOLINE DISPENSER PUMP CABINET.



METRIC
 WHOLE NUMBERS INDICATE MILLIMETRES
 DECIMALIZED NUMBERS INDICATE METRES

NOTE:
 RESTORED ALL GRASSED AREAS DISTURBED WITH TOPSOIL (75mm) AND SOD UNLESS OTHERWISE SHOWN OR SPECIFIED

B.M. TOP OF PUMPHOUSE MOTOR ROOM FLOOR ELEV. 326.136m

NO.	REVISIONS	DATE	BY
2	REVISED TO ASBUILT	03/08/97	S.E.H.
1	REVISED TO ASBUILT	17/11/95	K.R.

IDE I.D. ENGINEERING CANADA INC.
 Professional Engineers
 WINNIPEG, MANITOBA

DESIGNED BY F.R.J.	CHECKED BY F.R.J.
DRAWN BY F.R.J., G.L.	APPROVED BY B.L.F.
HOR. SCALE: 1:100	RELEASED FOR CONSTRUCTION:
VERTICAL: 1:100	DATE FEB. 14, 1994

PROVINCE OF MANITOBA
 ORIGINAL STAMPED BY
 F.R. JOHNSON
 P. ENG.
 31/3/94
 REGISTERED ENGINEER

CONSULTANT DRAWING NO.
 IB-35-515-SW1-AB

THE CITY OF WINNIPEG
 WORKS AND OPERATIONS DIVISION
 WATERWORKS WASTE & DISPOSAL DEPARTMENT

SHOAL LAKE INTAKE FACILITY UPGRADING

FUEL, DRAINAGE AND WASTEWATER SYSTEMS

CITY DRAWING NUMBER
 SHEET 25 OF 154
 D-3823

FILE: C:\ACAD\SHOAL LAKE\DWG-3823.DWG 04/28/98 2:12pm DID