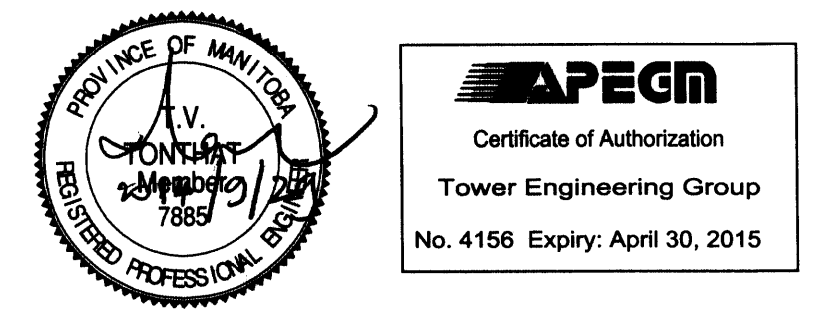


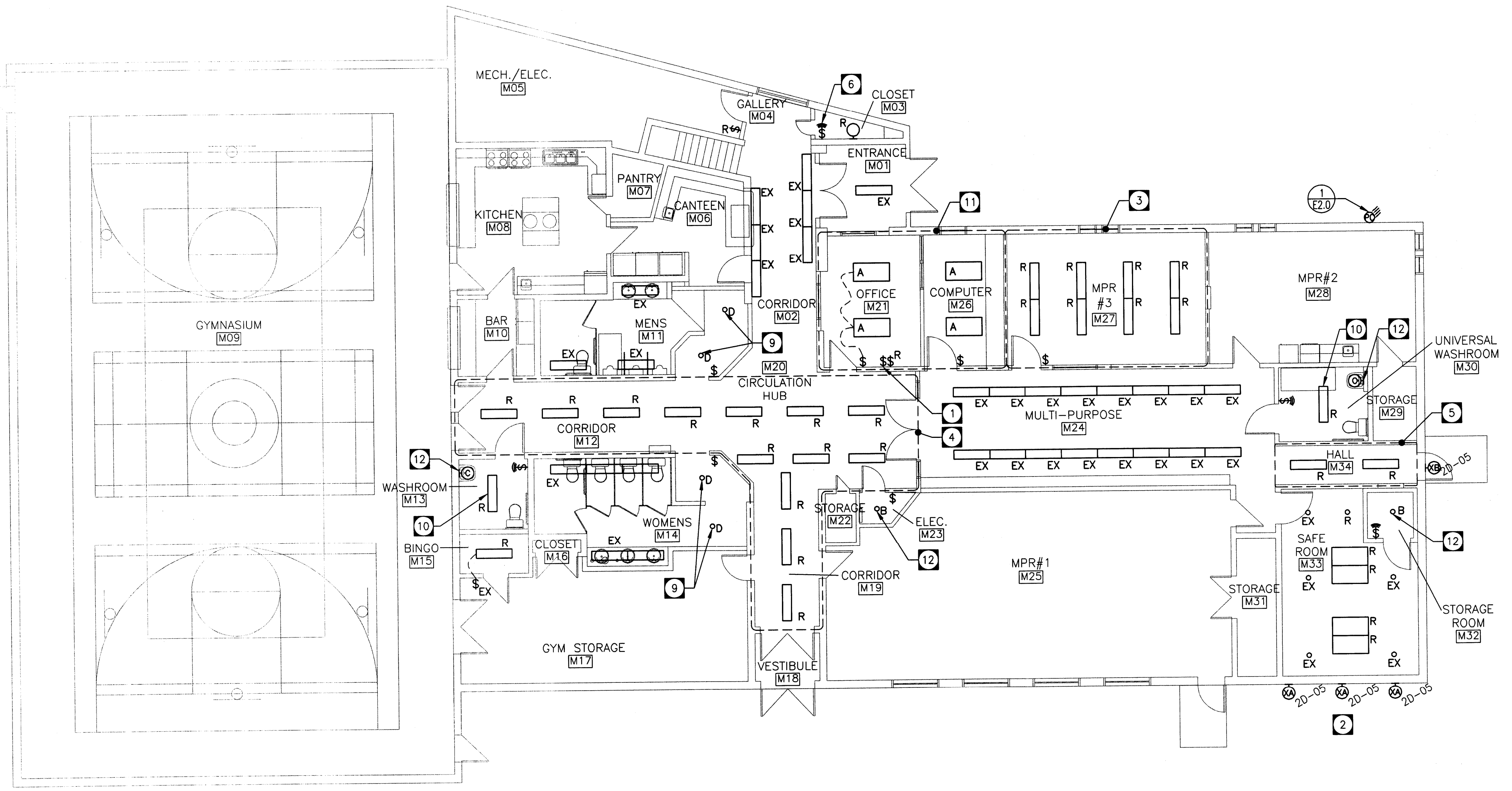
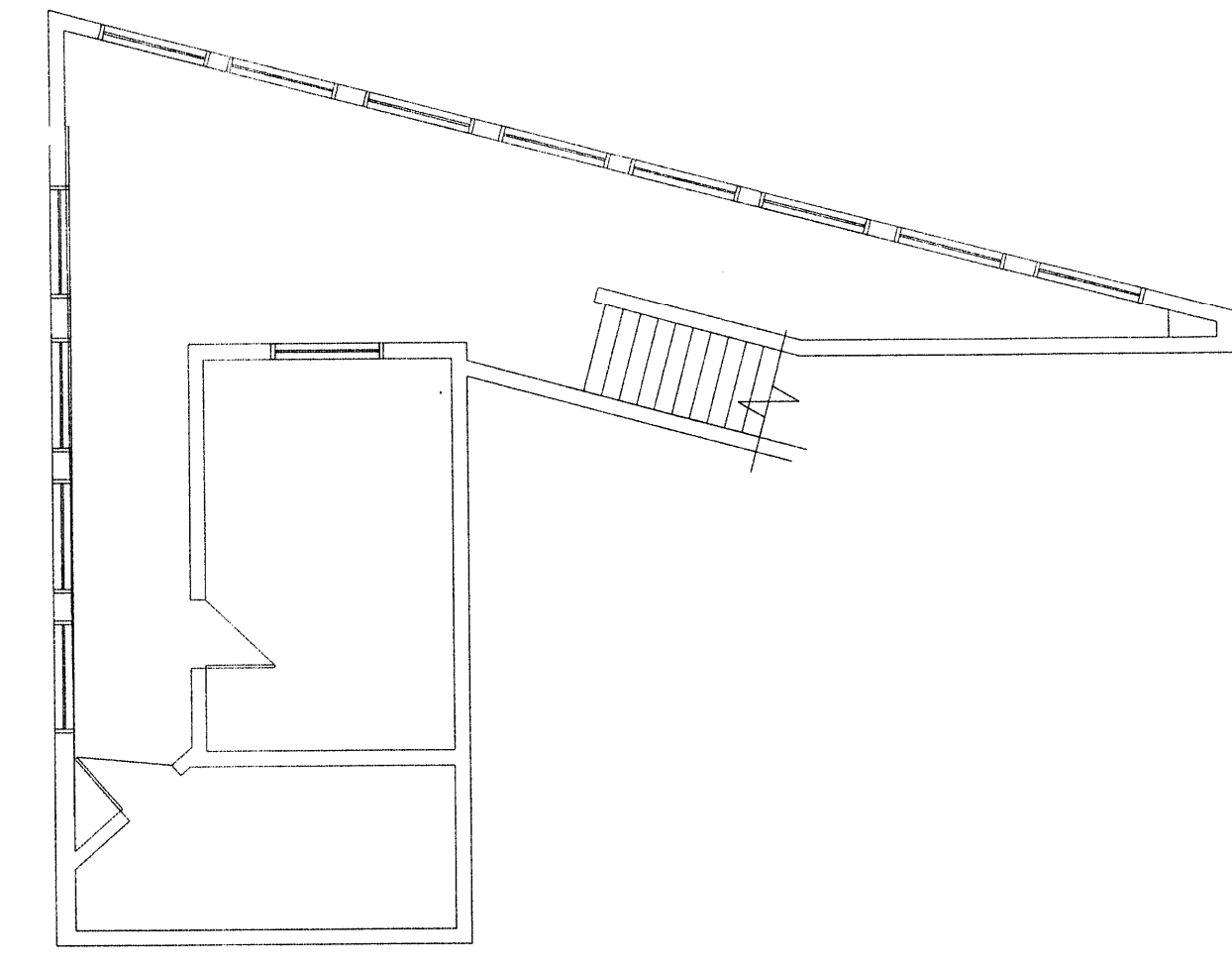
- DRAWING NOTES:**
- 1 RELOCATED COMMON AREA SWITCHES.
 - 2 PROVIDE EXTERIOR LIGHTING TO HIGHLIGHT CUT LETTER SIGNAGE. WIRE AND CONNECT TO PHOTOCELL.
 - 3 RELOCATE FIXTURES FROM EXISTING OFFICE IN DENOTED AREA. WIRE AND CONNECT TO DEDICATED EXISTING AREA LIGHTING CIRCUIT. COORDINATE EXACT CIRCUIT ON SITE.
 - 4 RELOCATE 13 FIXTURES FROM COMMON AREA INTO DENOTED AREA. WIRE AND CONNECT TO DEDICATED EXISTING AREA LIGHTING CIRCUIT. COORDINATE EXACT CIRCUIT ON SITE.
 - 5 RELOCATE 2 FIXTURES FROM COMMON AREA INTO DENOTED AREA. WIRE AND CONNECT TO DEDICATED EXISTING AREA LIGHTING CIRCUIT. COORDINATE EXACT CIRCUIT ON SITE.
 - 6 PROVIDE WALL MOUNT OCCUPANCY SENSOR FOR RELOCATED EXISTING FIXTURE.
 - 7 ELECTRICAL SUB CONTRACTOR SHALL APPLY FOR ALL APPLICABLE MANITOBA HYDRO POWER SMART REBATES ON BEHALF OF CITY OF WINNIPEG.
 - 8 PROVIDE NEW LAMPS FOR ALL RELOCATED LIGHT FIXTURES. REPLACE BALLASTS WITH NEW AS REQUIRED.
 - 9 WIRE AND CONNECT NEW LIGHT FIXTURES TO EXISTING WASHROOM LIGHTING CIRCUIT.
 - 10 RELOCATE EXISTING FIXTURE FROM CORRIDOR M12.
 - 11 WIRE AND CONNECT NEW LIGHT FIXTURES TO A DEDICATE CIRCUIT IN AN EXISTING PANEL.
 - 12 WIRE AND CONNECT NEW LIGHT FIXTURE TO AREA LIGHTING CIRCUIT.



- rev4 - 2014-09-29 - Issued for Construction
- rev3 - 2014-08-01 - Issued for 95% Review
- rev2 - 2014-06-27 - Issued for 75% Review
- rev1 - 2014-04-30 - Issued for 30% Review revision

The drawings, specifications, revisions, addendums, and clarifications, must be read as a whole. Errors and omissions due to separation of the documents by the general contractor become the responsibility of the same.

This drawing must not be scaled.
The general Contractor must verify all dimensions, datums and levels prior to commencement of work. All errors and omissions must be reported immediately to the Architect.
Variations and modifications to work shown on this drawing shall not be carried out without written permission from the Architect.



TOWER PROJECT NO. :141033

TOWER ENGINEERING GROUP
UNIT 1 - 1140 Waverley St. WINNIPEG, MB R3T 0P4
TEL: (204) 925-1150 FAX: (204) 925-1155
EMAIL: towereng@towereng.ca WEB: www.towereng.ca
• WINNIPEG • CALGARY • CAMBRIDGE

funk
Harold Funk and Associates
Architecture and Urban Design
400-5, Denison Street, Winnipeg, Manitoba, R4B 1L5
T: (204) 944-0077 F: (204) 944-0077
E: info@funk.ca www.funk.ca

project
WESTON MEMORIAL COMMUNITY CENTRE - INTERIOR RENOVATION WINNIPEG, MANITOBA

sheet title
ELECTRICAL LIGHTING LAYOUT

project number: 14-004 drawing number:
scale: AS SHOWN **E2.0**
drawn by: JD
approved by: MM
date: September 30, 2014