

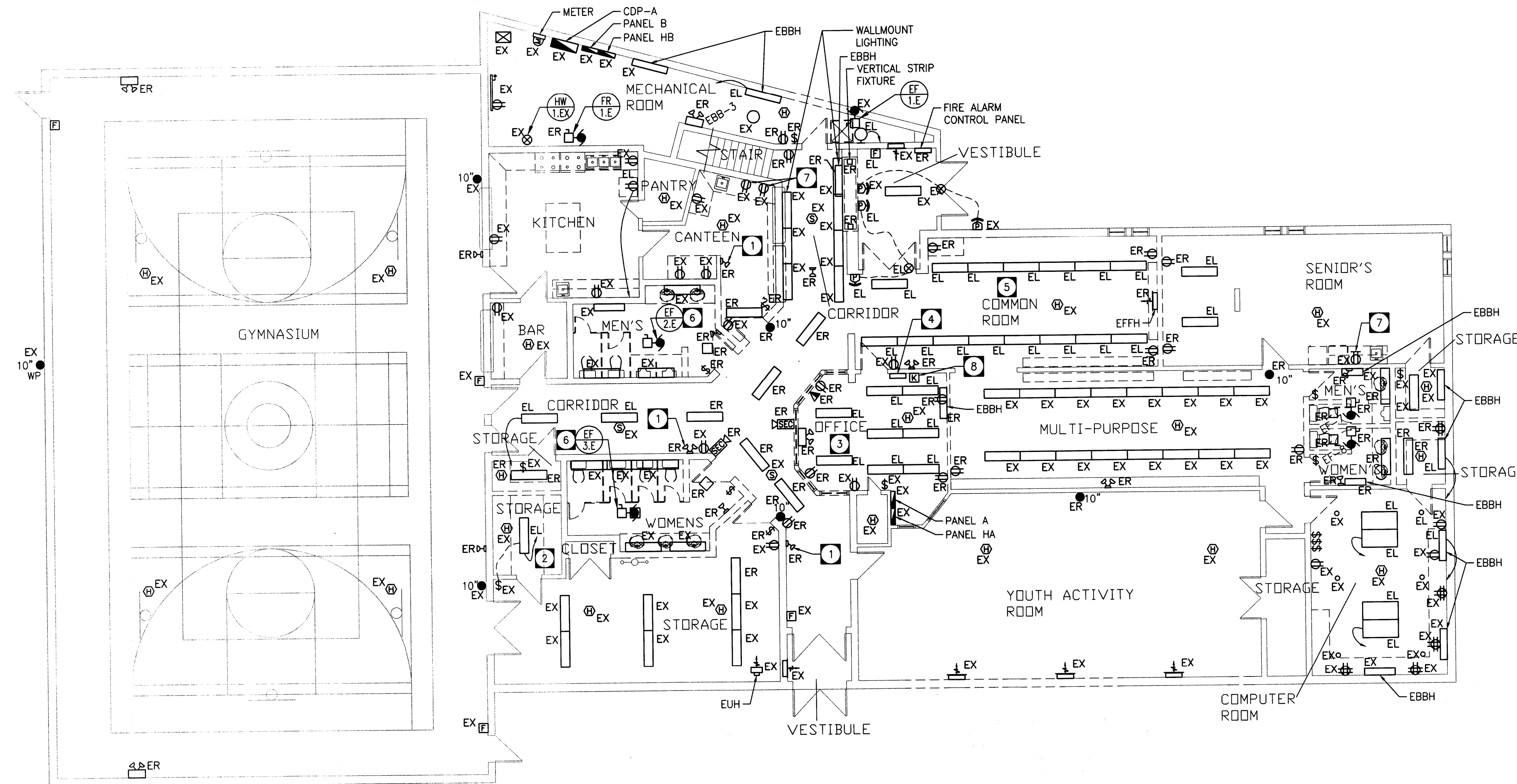
LEGEND			
	STRIP FLUORESCENT LIGHT (A DENOTES TYPE)		EMERGENCY BATTERY BANK UNIT C/W HEAD LIGHTS
	1'x4' FLUORESCENT LIGHT (B DENOTES TYPE)		END OF LINE RESISTOR
	2'x4' FLUORESCENT LIGHT (C DENOTES TYPE)		SINGLE POLE SWITCH (3 DENOTE 3 WAY SWITCH)
	2'x2' FLUORESCENT LIGHT (D DENOTES TYPE)		MOTION SENSOR SWITCH (WALL MOUNTED)
	H.I.D. OR INCANDESCENT FIXTURE (F DENOTES TYPE)		HANDI-CAP SECURITY PUSH BUTTON
	POT LIGHT (G DENOTES TYPE)		HAND DRYER
	WALL MOUNTED LIGHT FIXTURE (H DENOTES TYPE)		DUPLEX RECEPTACLE
	NURSE CALL SYSTEM DOME LIGHT		DUPLEX RECEPTACLE - ABOVE COUNTER (GFCI)
	PHOTOCELL		DUPLEX RECEPTACLE- GROUND FAULT CIRCUIT INTERRUPTER
	FIRE ALARM SIGNAL HORN & STROBE (CEILING MOUNT)		FOURPLEX RECEPTACLE (QUAD)
	FIRE ALARM SIGNAL STROBE (CEILING MOUNT)		MAGNETIC DOOR HOLDER
	EMERGENCY LIGHT (REMOTE - 2 HEADS)		CARBON MONOXIDE DETECTOR
	EMERGENCY LIGHT (SINGLE HEAD)		SECURITY KEYPAD
	EXIT LIGHT C/W DIRECTIONAL ARROWS AS SHOWN		DIRECT CONNECT
	POWER PANELBOARD - SURFACE MOUNT/FLUSH MOUNT		SYSTEM PANELBOARD - SURFACE MOUNT/FLUSH MOUNT
	TRANSFORMER		ELECTRIC METER
	TELEPHONE BACKBOARD		VOICE/DATA OUTLET
	DATA OUTLET		MOTOR AND DISCONNECT
	BASEBOARD HEATER (1000 DENOTES 1000 WATTS)		FORCE FLOW HEATER
	UNIT HEATER		THERMOSTAT
	SMOKE DETECTOR (ADDRESSABLE)		HEAT DETECTOR (COMBINATION)
	MANUAL PULL STATION		FIRE ALARM SIGNAL HORN & STROBE
	FIRE ALARM BELL (10") C/W STROBE LIGHT		SECURITY HORN
	PUSH BUTTON		HANDI-CAP SECURITY PUSH BUTTON
	DOOR CONTACT (FLUSH IN FRAME)		EXISTING TO BE REMOVED
	EXISTING TO REMAIN		EXISTING TO BE RELOCATED
	RELOCATED EXISTING (SHOWN IN NEW LOCATION)		NEW

**DRAWING NOTES:**

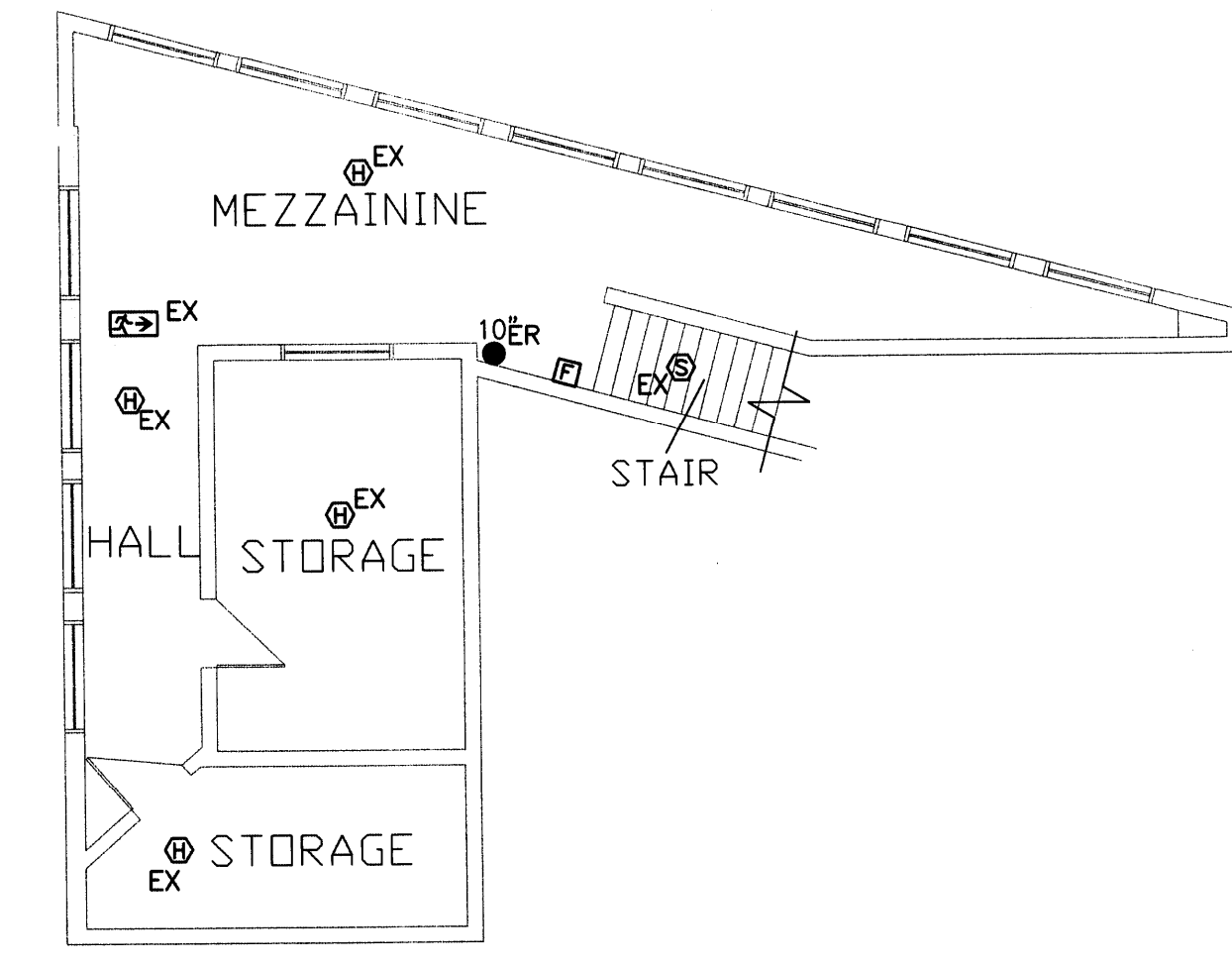
- EXISTING EMERGENCY HEADS TO BE REPLACED WITH NEW. REFER TO DRAWING E3.0. TYPICAL
- EXISTING FIXTURE TO BE ROTATED TO SUIT NEW LAYOUT.
- REMOVE LIGHTING WITHIN OFFICE.
- RELOCATE EXISTING COMMON AREA LIGHT SWITCHES TO NEW OFFICE. REFER TO E2.0.
- RELOCATE EXISTING SURFACEMOUNT FLUORESCENT LIGHTING IN COMMON ROOM. REFER TO E2.0
- DISCONNECT EXISTING WASHROOM EXHAUST FANS. CONNECT NEW FANS TO EXISTING CIRCUIT.
- EXISTING DUPLEX RECEPTACLE TO BE REPLACED WITH GFCI RECEPTACLE.
- RELOCATE EXISTING SECURITY KEYPAD TO NEW OFFICE M21.

**GENERAL NOTE**

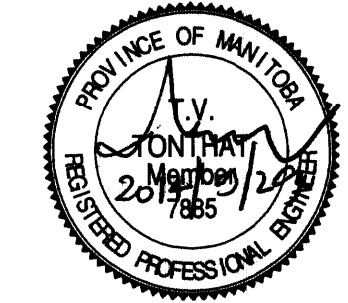
- ELECTRICAL DEMO DRAWINGS E1.0 SHALL BE READ IN CONJUNCTION WITH ARCHITECTURAL, STRUCTURAL, MECHANICAL AND ELECTRICAL DRAWINGS. REFER TO ARCHITECTURAL DRAWINGS FOR COMPLETE SCOPE OF WORK.
- E.C. SHALL COORDINATE ALL DEMOLITION WORK WITH G.C. IN EXISTING AREAS.
- ALL EXISTING SYSTEMS/EQUIPMENT/DEVICES REQUIRING DISCONNECTION TO FACILITATE DEMOLITION SHALL BE RECONNECTED AND RETURNED TO FULLY OPERATIONAL CONDITION.
- E.C. TO LOCATE/RELOCATE EXISTING SERVICES AS REQUIRED TO SUIT INTERIOR RENOVATION.
- EXISTING LIGHT FIXTURES MARKED 'EL' AND ASSOCIATED LOW VOLTAGE SWITCH TO BE DISCONNECTED, REMOVED, BENCH CLEANED AND RELOCATED. REUSE EXISTING CIRCUIT, WHIPS AND CONTROLS WHENEVER POSSIBLE. REFER TO DRAWING E2.0 FOR NEW LIGHTING LAYOUT.



**EXISTING MAIN FLOOR PLAN**  
SCALE: 1:100



**EXISTING MEZZANINE FLOOR PLAN**  
SCALE: 1:100



**APEGM**  
Certificate of Authorization  
Tower Engineering Group  
No. 4156 Expiry: April 30, 2015

- rev4 - 2014-09-29 - Issued for Construction
- rev3 - 2014-08-01 - Issued for 95% Review
- rev2 - 2014-06-27 - Issued for 75% Review
- rev1 - 2014-04-30 - Issued for 30% Review revision

The drawings, specifications, revisions, addendums, and clarifications, must be read as a whole. Errors and omissions due to separation of the documents by the general contractor become the responsibility of the same.

This drawing must not be scaled.

The general Contractor must verify all dimensions, datums and levels prior to commencement of work. All errors and omissions must be reported immediately to the Architect.

Variations and modifications to work shown on this drawing shall not be carried out without written permission from the Architect.

TOWER PROJECT NO. :141033  
**TOWER ENGINEERING GROUP**  
UNIT 1 - 1140 WAVERLEY ST. WINNIPEG, MB R3T 0P4  
TEL: (204) 925-1150 FAX: (204) 925-1155  
EMAIL: towereng@towereng.ca WEB: www.towereng.ca  
• WINNIPEG • CALGARY • CAMBRIDGE



project  
**WESTON MEMORIAL COMMUNITY CENTRE - INTERIOR RENOVATION**  
WINNIPEG, MANITOBA

sheet title  
**ELECTRICAL DEMO LAYOUT**

project number: 14-004 drawing number:  
scale: AS SHOWN **E1.0**  
drawn by: JD  
approved by: MM  
date: September 30, 2014