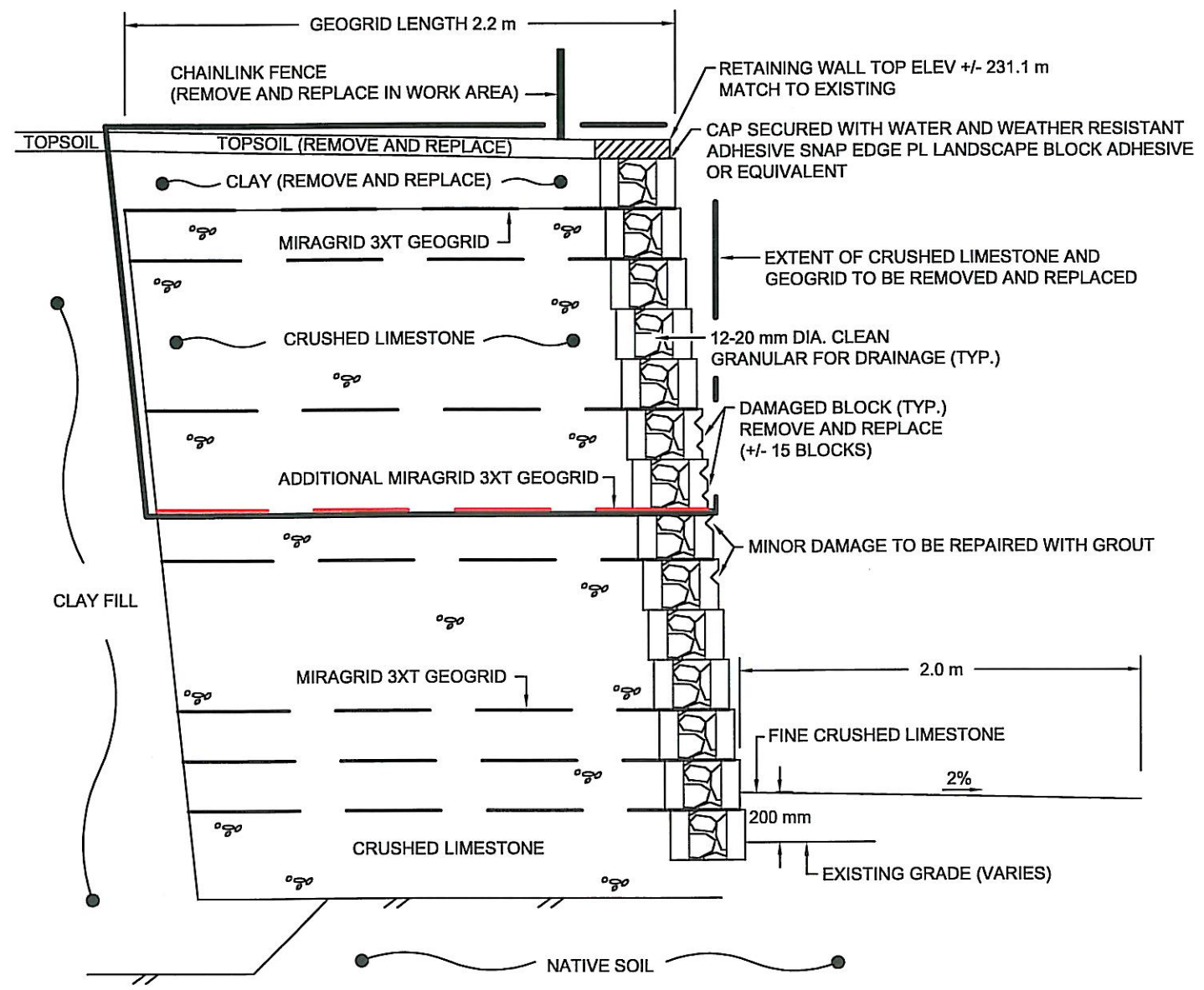


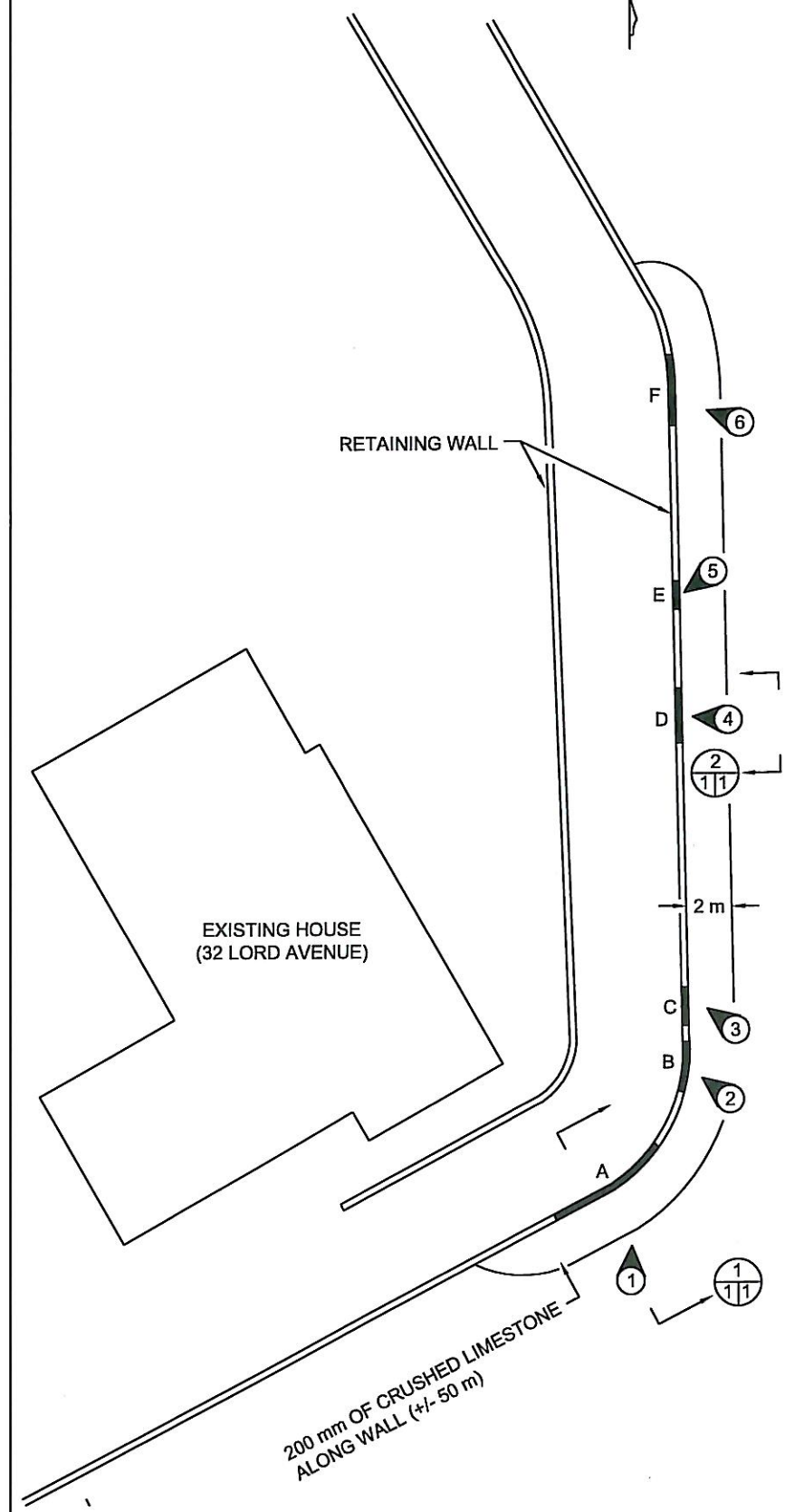
- LEGEND**
- PHOTOGRAPH AND DIRECTION
 - SECTION OF RETAINING WALL TO BE REPAIRED
 - SECTION/DETAIL No.
 - SECTION / DETAIL PAGE LOCATION
 - SECTION / DETAIL PAGE REFERENCE

- NOTES**
- SECTION A TO BE EXCAVATED AND REPAIRED AS SHOWN (+/-39 m IN LENGTH).
 - BROKEN BLOCKS IN SECTIONS B, C, D AND F TO BE CUT FROM WALL AND HIGH STRENGTH GROUT PLACED INTO CAVITY. PLACE FINISHED BLOCK FACE AND ANCHOR INTO GROUT (+/- 22 BLOCKS).
 - BROKEN BLOCK IN SECTION E TO BE FILLED WITH COLORED HIGH STRENGTH GROUT.
 - CRUSHED LIMESTONE TO BE COMPACTED TO 100% MAXIMUM DRY DENSITY (M.D.D) IN MAXIMUM 200 mm THICK LIFTS.
 - FINE CRUSHED GRAVEL TO BE COMPACTED TO 100% M.D.D.
 - 12-20 mm DIA. CLEAN GRANULAR TO BE COMPACTED TO AS NEAR 100% M.D.D. AS POSSIBLE.
 - RETAINING WALL BLOCKS TO BE AB STONE, SANDSTONE COLORED.

SECTIONS B, C, D AND F RETAINING WALL BLOCK REPAIR (1:25)



CROSS-SECTION OF SECTION A RETAINING WALL REPAIR (1:25)



SITE PLAN (1:300)

NO.	DATE	ISSUE / REVISION
0	Aug. 6/14	Issue for tender

6 - 854 Marion Street
Winnipeg, MB R2J 0K4
Phone: (204) 233-1694
Fax: (204) 235-1579

ENG-TECH
CONSULTING LIMITED

ENG. STAMP:

PROVINCE OF MANITOBA
C.D.
HRYHORUK
REGISTERED PROFESSIONAL ENGINEER

APEGM
Certificate of Authorization
ENG-TECH Consulting Limited
No.2475 Expiry: April 30, 2015

CLIENT:
CITY OF WINNIPEG

PROJECT:
DYKE REPAIR - 32 LORD AVENUE,
WINNIPEG, MB

DWG DESCRIPTION:
SITE PLAN AND
RETAINING WALL REMEDIATION

SCALE:
AS SHOWN

DRAWN BY: ALH DATE: AUGUST 2014

FILE No.: 14-217-02 CLIENT DWG/FIG. No.:

ENG-TECH DWG/FIG. No.: 1 No.: