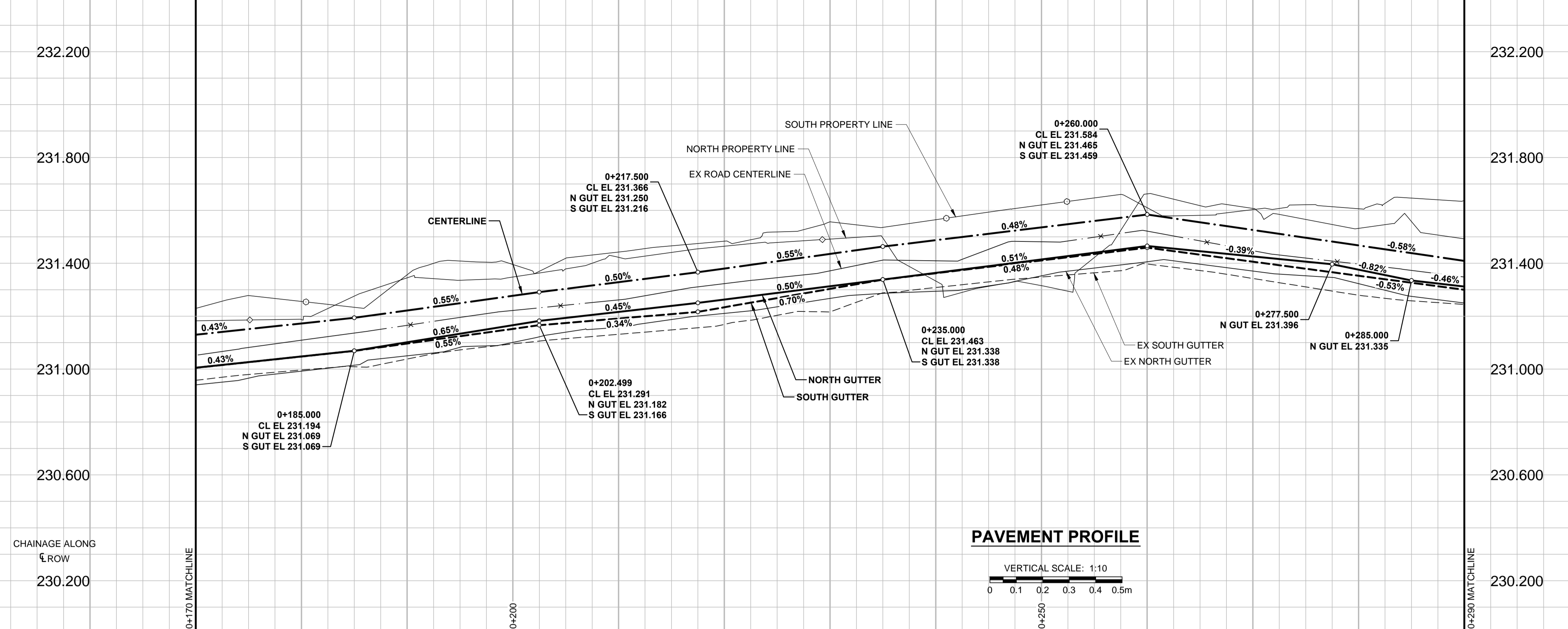
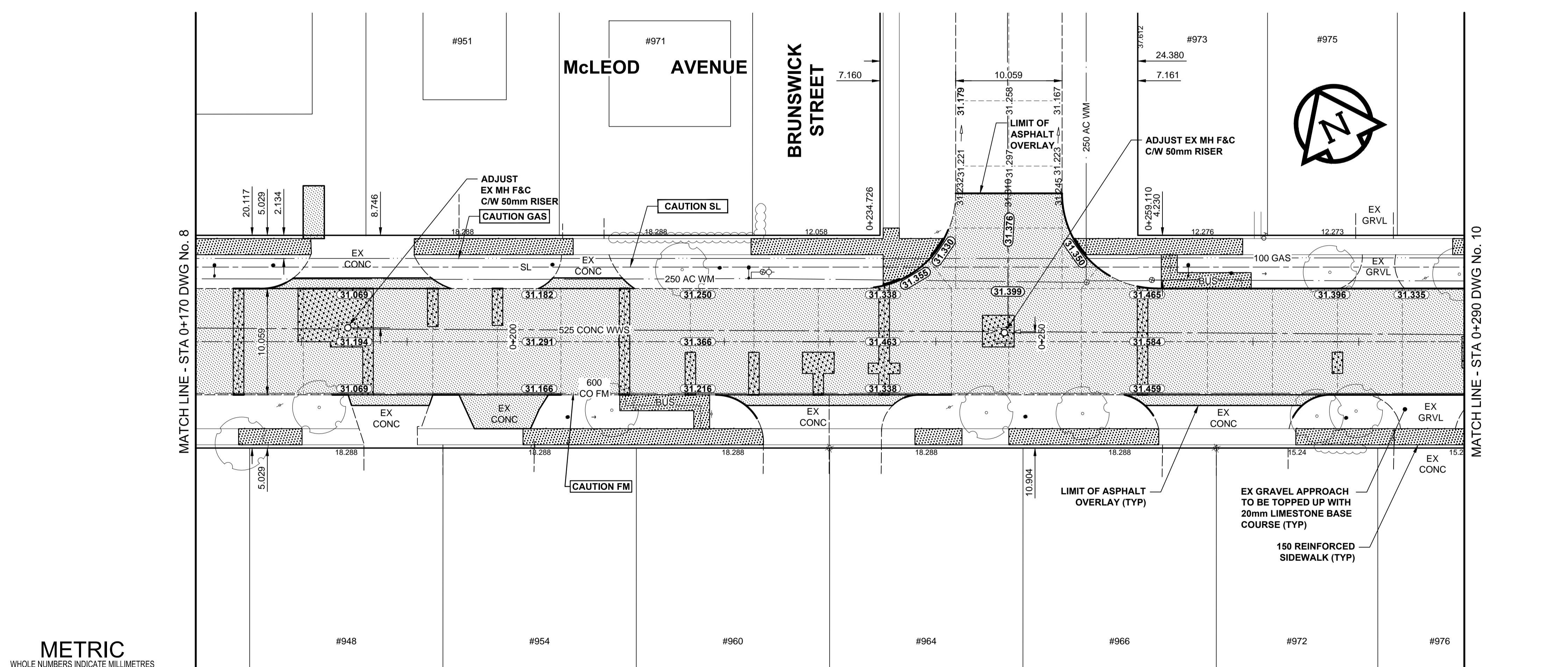


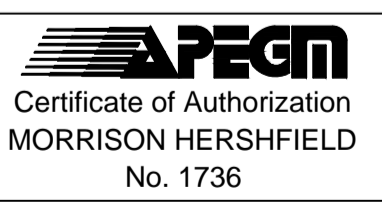
A1 SIZE 894mm x 841mm  
PLOT: 6277/2014.10.39.19 AM  
FILE NAME: W140002-T-009\_RX.dwg Saved By: diane



- FEEDERMAIN NOTES:**
- CONTACT THE WATER AND WASTE DEPARTMENT'S CONSTRUCTION SERVICES COORDINATOR AT 204-986-4289, 7 DAYS PRIOR TO THE COMMENCEMENT OF CONSTRUCTION TO ARRANGE FOR AN INSPECTION.
  - PRIOR TO ANY CONSTRUCTION, THE FEEDERMAIN MUST BE EXPOSED BY A SOFT DIG METHOD SO AS TO CONFIRM DEPTH AND LOCATION.
  - A MINIMUM CLEARANCE OF 0.5m MUST BE PROVIDED BETWEEN THE UNDERSIDE OF THE PROPOSED WORKS AND THE TOP ANY EXISTING FEEDERMAIN BY TRENCHLESS OR OPEN TRENCH.
  - DO NOT OPERATE VIBRATORY EQUIPMENT OVER OR WITHIN 3.0m OF THE FEEDERMAIN CENTERLINE.
  - CONCRETE DEMOLITION AND REMOVAL WITHIN 3 METERS HORIZONTALLY OF THE FEEDERMAIN SHALL BE COMPLETED BY SAWCUTTING AND REMOVAL, OR BY THE USE OF HAND HELD JACKHAMMERS. USE OF MACHINE MOUNTED CONCRETE BREAKERS ABOVE THE FEEDERMAIN SHALL NOT BE PERMITTED.



- NOTES**
- ADJUST MH AND CB RIMS TO NEW GRADES.
  - LAMP STANDARDS, HYDRO POLES, AND ANCHORS THAT REQUIRE TEMPORARY SUPPORT, REMOVAL, OR REPLACEMENT, TO BE DONE SO AT THE EXPENSE OF THE CONTRACTOR AS NECESSARY.
  - CONTRACTOR TO REGRADE/RENEW EXISTING PRIVATE SIDEWALKS TO LIMITS AS SHOWN. SIDEWALKS TO BE RENEWED WITH CONCRETE UNLESS NOTED OTHERWISE.
  - CONTRACTOR TO TAKE PRECAUTIONARY STEPS TO PROTECT EXISTING TREES WITHIN THE LIMITS OF CONSTRUCTION FROM DAMAGE FROM CONSTRUCTION ACTIVITIES AS OUTLINED IN THE SPECIFICATIONS.
  - MODIFIED BARRIER CURB TO BE USED AT ALL INTERSECTION RADII, BACK LANE RADII AND BULLNOSES.
  - CONTRACTOR TO CONFIRM THE LOCATION OF ALL UTILITIES/SERVICES IN THE FIELD PRIOR TO CONSTRUCTION.
  - CONTRACTOR TO OVERLAY DRIVEWAYS TO ENSURE POSITIVE DRAINAGE TO NEW STREET GRADES. FINAL LIMITS TO BE DETERMINED IN THE FIELD BY CONTRACT ADMINISTRATOR.
  - ADD 200.000m TO ABBREVIATED ELEVATIONS TO OBTAIN GEODETIC ELEVATIONS.
  - CB OFFSETS ARE DIMENSIONED TO BOC.



BID OPPORTUNITY No. 622-2014

**METRIC**  
WHOLE NUMBERS INDICATE MILLIMETRES  
DECIMALIZED NUMBERS INDICATE METRES

EXISTING	LEGEND - PLAN	NEW	EXISTING	LEGEND - PLAN	NEW	EXISTING	LEGEND - PLAN	NEW
○	GAS	○	MANHOLE	●	CONCRETE PAVEMENT	▨	CONCRETE PAVEMENT	▨
□	MTS	□	CATCH BASIN / CATCH PIT	■	CONC SIDEWALK / MEDIAN	▨	CONC SIDEWALK / MEDIAN	▨
△	HYDRO	△	CURB INLET WITH BOX	▲	ASPHALT PAVEMENT	▨	ASPHALT PAVEMENT	▨
—	CATV / FIBRE OPTIC	—	TREE	—	PAVING STONE	▨	PAVING STONE	▨
—	TRAFFIC SIGNALS / PIT	—	TEST HOLE	—	GRAVEL	▨	GRAVEL	▨
—	LAND DRAINAGE SEWER	—	PROPERTY LINE	—	RAMP CURB	▨	RAMP CURB	▨
—	SANITARY/COMBINED SEWER	—	SURVEY BAR	—	PLANING / REMOVAL	▨	PLANING / REMOVAL	▨
—	SEWER SERV/DRAINAGE CONN	—	FENCE	—				
—	WATERMAIN	—	BOC / EDGE OF PAVEMENT	—				
—	SUBDRAIN	—	ELEVATION	—				
—	DITCH	—	TRAFFIC SIGN	—				

**LOCATION APPROVED**  
UNDERGROUND STRUCTURES

GBM 11-007  
ELEV 231.963

DATE COMMITTEE

**NOTE:**  
LOCATION OF UNDERGROUND STRUCTURES AS SHOWN ARE BASED ON THE BEST INFORMATION AVAILABLE. BUT NO GUARANTEE IS GIVEN THAT ALL EXISTING UTILITIES ARE SHOWN OR THAT THE GIVEN LOCATIONS ARE EXACT. CONFIRMATION OF EXISTENCE AND EXACT LOCATION OF ALL SERVICES MUST BE OBTAINED FROM THE INDIVIDUAL UTILITIES BEFORE PROCEEDING WITH CONSTRUCTION.

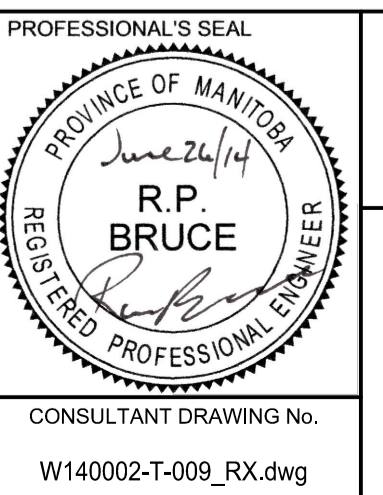
**MORRISON HERSHFIELD**

DESIGNED BY: RPB  
DRAWN BY: DID/DML

CHECKED BY: WRJ  
APPROVED BY: BWB

HOR. SCALE: 1:250  
VERT. SCALE: 1:10

DATE: 14/06/25



**THE CITY OF WINNIPEG**  
PUBLIC WORKS DEPARTMENT  
ENGINEERING DIVISION

**2014 LOCAL STREETS PACKAGE**  
**McLEOD AVENUE**  
**LONDON STREET TO LOUELDA STREET**  
**ASPHALT REHABILITATION**  
**HORIZONTAL AND VERTICAL ALIGNMENT**  
**STA 0+170 TO STA 0+290**

CITY DRAWING NUMBER: N/A  
SHEET 9 OF 20  
DRAWING No. 9  
REV 0