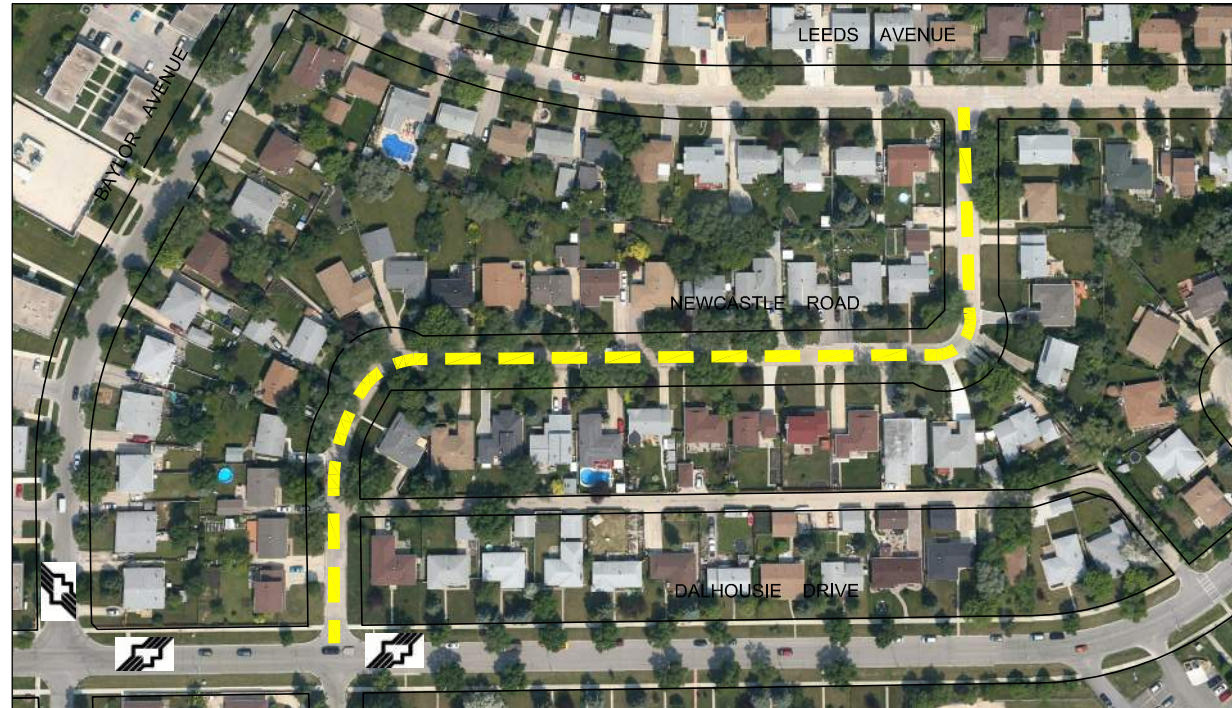


Jun 02, 2014 - 4:10pm  
 P:\5514001-5514099\5514040 - 2014 TBO Consulting Services\MMM drawings\Contract-2\5514040-2014.02-Contract-2 Dwg-May-30.dwg - tab:12



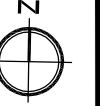
**NEWCASTLE ROAD - DALHOUSIE DRIVE TO LEEDS AVENUE**

SCALE 1:2500



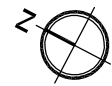
**POINT WEST DRIVE - POINT WEST WAY TO BAIRDMORE BOULEVARD**

SCALE NTS



**PAYMENT STREET - LAPORTE DRIVE TO GRANDMONT BOULEVARD**

SCALE NTS



**PIRSON CRESCENT - GRANDMONT BOULEVARD TO PAYMENT STREET**

SCALE NTS



**METRIC**  
 WHOLE NUMBERS INDICATE MILLIMETRES  
 DECIMALIZED NUMBERS INDICATE METRES

**LEGEND**

- LIMIT OF CONSTRUCTION
- BUS ROUTE
- SCHOOL LOCATION

**LOCATIONS APPROVED**  
 UNDERGROUND STRUCTURES

SIGNED BY: \_\_\_\_\_ DATE: \_\_\_\_\_

SUPPLY U/G STRUCTURES DATE

LOCATION OF UNDERGROUND STRUCTURES AS SHOWN ARE BASED ON THE BEST INFORMATION AVAILABLE BUT NO GUARANTEE IS GIVEN THAT ALL EXISTING UTILITIES ARE SHOWN OR THAT THE GIVEN LOCATIONS ARE EXACT CONFIRMATION OF EXISTENCE AND EXACT LOCATION OF ALL SERVICES MUST BE OBTAINED FROM THE INDIVIDUAL UTILITIES BEFORE PROCEEDING

G.B.M. -	ELEV. -	DATE	BY
0	ISSUED FOR TENDER	14/05/09	VMM
NO.	REVISIONS	DATE	BY

<b>MMM GROUP</b>		MMM Group Limited Suite 111 - 93 Lombard Ave Winnipeg, MB R3B 3E1 t. 204.943.3178 f. 204.943.4948 www.mmmgrouplimited.com	
DESIGNED BY	VMM/BD	CHECKED BY	BD
DRAWN BY	SB	APPROVED BY	VMM
HOR. SCALE NTS	VERTICAL	RELEASED FOR CONSTRUCTION	
DATE	14/05/30	DATE	

ENGINEER'S SEAL

CONSULTANT ACAD DWG. NO.  
5514040-2014.2-12

**THE CITY OF WINNIPEG**  
 PUBLIC WORKS DEPARTMENT  
 ENGINEERING DIVISION

2014 THIN BITUMINOUS OVERLAY (TBO) PROGRAM

NEWCASTLE ROAD, POINT WEST DRIVE, PAYMENT STREET, PIRSON CRESCENT

CITY DRAWING NO.  
SHEET 5 OF 6  
DRAWING NO. REV.  
12 0

NOTE: These design documents are prepared solely for the use by the party with whom the design professional has entered into a contract and there are no representations of any kind made by the design professional to any party with whom the design professional has not entered into a contract.