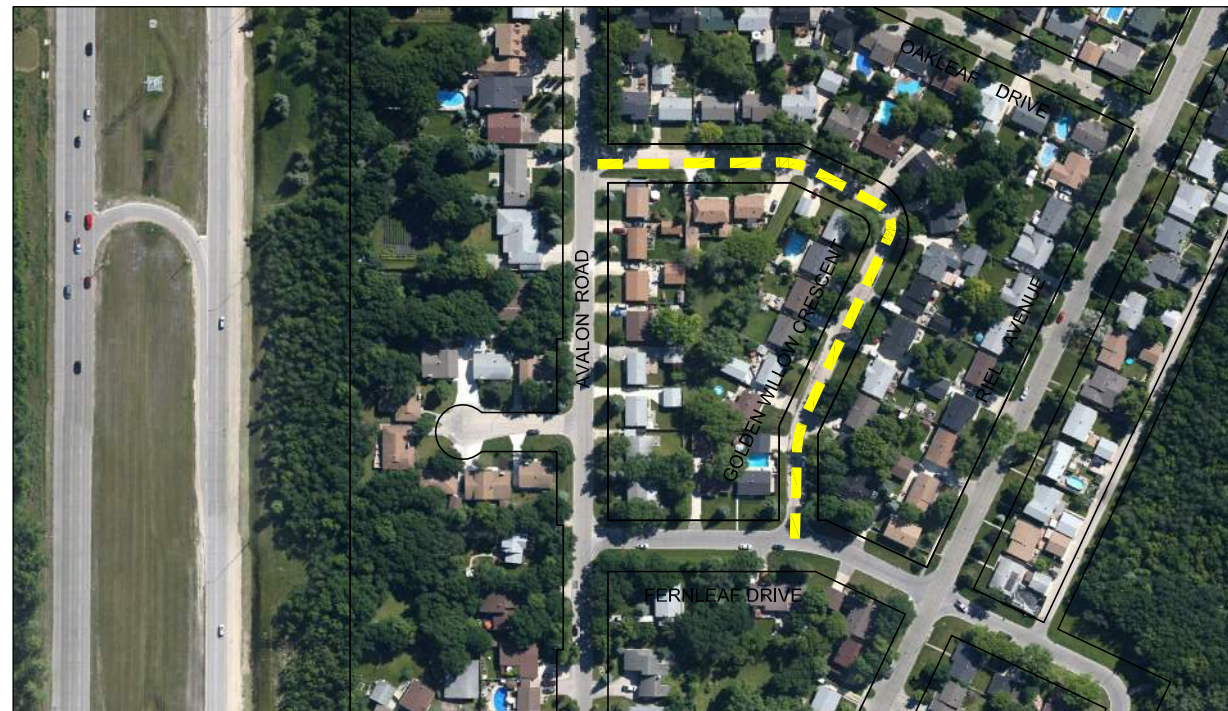
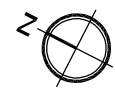


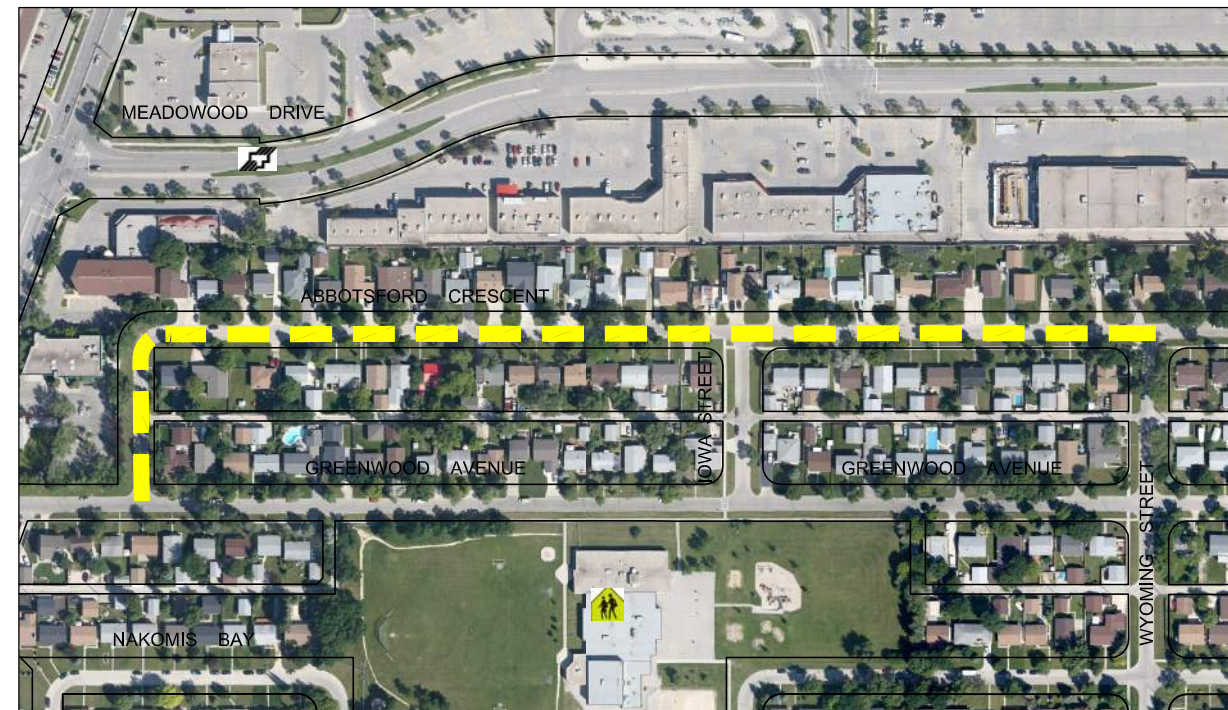
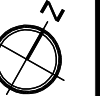
Jun 02, 2014 - 3:55pm
 P:\5514001-5514099\5514040 - 2014 TBO Consulting Services\MMM drawings\Contract-2\5514040-2014.02-Contract-2 Dwg-May-30.dwg - tab:09



GOLDEN WILLOW CRESCENT - AVALON ROAD TO FERNLEAF DRIVE
SCALE NTS



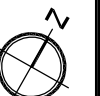
ROBERTSON CRESCENT - RIEL AVENUE TO DARWIN AVENUE
SCALE 1:2500



ABBOTSFORD CRESCENT - WYOMING STREET TO GREENWOOD AVENUE
SCALE NTS



GREENWOOD AVENUE - WYOMING STREET TO DAKOTA STREET
SCALE 1:1500



METRIC
WHOLE NUMBERS INDICATE MILLIMETRES
DECIMALIZED NUMBERS INDICATE METRES

LEGEND

- LIMIT OF CONSTRUCTION
- BUS ROUTE
- SCHOOL LOCATION

LOCATIONS APPROVED
UNDERGROUND STRUCTURES

SIGNED BY: _____ DATE: _____

SUPPLY U/G STRUCTURES

LOCATION OF UNDERGROUND STRUCTURES AS SHOWN ARE BASED ON THE BEST INFORMATION AVAILABLE BUT NO GUARANTEE IS GIVEN THAT ALL EXISTING UTILITIES ARE SHOWN OR THAT THE GIVEN LOCATIONS ARE EXACT CONFIRMATION OF EXISTENCE AND EXACT LOCATION OF ALL SERVICES MUST BE OBTAINED FROM THE INDIVIDUAL UTILITIES BEFORE PROCEEDING

G.B.M. -	ELEV. -	DATE	BY
0	ISSUED FOR TENDER	14/05/09	VMM
NO.	REVISIONS	DATE	BY

MMM GROUP		MMM Group Limited Suite 111 - 93 Lombard Ave. Winnipeg, MB R3B 3B1 T. 204.943.3178 F. 204.943.4948 www.mmmgrouplimited.com	
DESIGNED BY	VMM/BD	CHECKED BY	BD
DRAWN BY	SB	APPROVED BY	VMM
HOR. SCALE NTS		RELEASED FOR CONSTRUCTION	
VERTICAL		DATE	

ENGINEER'S SEAL

CONSULTANT ACAD DWG. NO. 5514040-2014.2-09

THE CITY OF WINNIPEG
PUBLIC WORKS DEPARTMENT
ENGINEERING DIVISION

2014 THIN BITUMINOUS OVERLAY (TBO) PROGRAM

GOLDEN WILLOW CRESCENT, ROBERTSON CRESCENT, ABBOTSFORD CRESCENT, GREENWOOD AVENUE

CITY DRAWING NO. SHEET 2 OF 6
DRAWING NO. REV. 09 0

NOTE: These design documents are prepared solely for the use by the party with whom the design professional has entered into a contract and there are no representations of any kind made by the design professional to any party with whom the design professional has not entered into a contract.