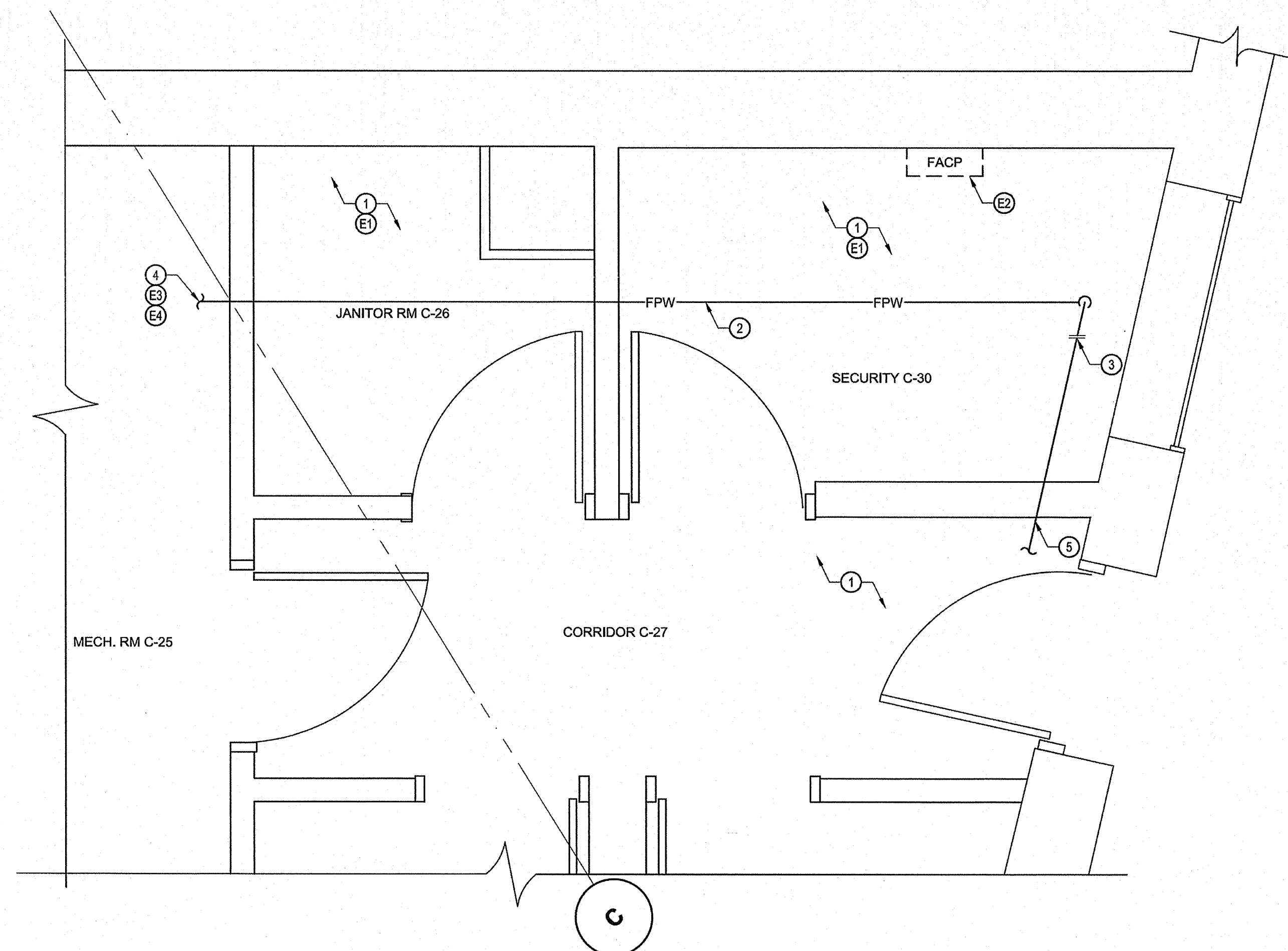


1 PARTIAL CORRIDOR C-27 DEMOLITION PLAN
M-1000 Scale 1:20

DEMOLITION DRAWING NOTES:

- 1 MECHANICAL CONTRACTOR TO REMOVE EXISTING LAY-IN ACOUSTIC TILE CEILING PANELS AND GRID AS REQUIRED TO ALLOW ACCESS FOR DEMOLITION AND INSTALLATION WORK. SALVAGE ALL UNBROKEN AND UNDAMAGED TILES FOR REINSTALLATION.
- 2 MEN'S AND WOMEN'S WASHROOM ARE TO BE KEPT FREE OF OBSTRUCTIONS AND AVAILABLE FOR USE BY TENANTS AND CITY STAFF ON SITE.
- 3 EXISTING JANITOR ROOM TO BE KEPT ACCESSIBLE AND FUNCTIONAL AT ALL TIMES EXCEPT AS MAY BE ARRANGED WITH CITY STAFF AND TENANTS FOR SHORT-TERM INACCESSIBILITY.
- 4 FOR CONTINUATION OF FIRE LINE IN MECHANICAL ROOM, REFER TO DRAWING M-6000.
- 5 EXISTING FLOOR-MOUNTED MOP SERVICE BASIN TO REMAIN.
- 6 EXISTING SHELVING ON WALL TO REMAIN. COORDINATE THE REMOVAL / RELOCATION OF STOCK FROM SHELVES LEAVING SHELVES IN PLACE.
- 7 REMOVE EXISTING 65Ø STEEL FIRE LINE TO THE END OF THE OBSTRUCTED SECTION.
- 8 EXISTING 65Ø FIRE LINE IN CEILING SPACE TO REMAIN IF UNOBSTRUCTED.



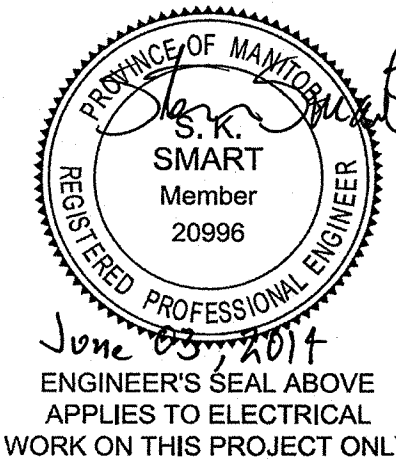
2 PARTIAL CORRIDOR C-27 NEW PLAN
M-1000 Scale 1:20

NEW WORK DRAWING NOTES:

- 1 MECHANICAL CONTRACTOR TO REPAIR AND REINSTALL EXISTING LAY-IN ACOUSTIC TILE CEILING INCLUDING GRID AND TILES TO RESTORE CEILING TO CONTINUOUS WALL -TO - WALL INTEGRITY. REPLACE BROKEN, CHIPPED, MISSING, MARKED OR ILL-FITTING CEILING TILE WITH LIKE PATTERN AND QUALITY TO MATCH EXISTING.
- 2 INSTALL NEW 65Ø FIRE LINE IN CEILING SPACE.
- 3 RECONNECT TO EXISTING 65Ø FIRE LINE PIPING THAT IS UNOBSTRUCTED.
- 4 FOR CONTINUATION OF FIRE LINE IN MECHANICAL ROOM, REFER TO DRAWING M-6000. PROVIDE FIRE STOPPING AT PENETRATION OF DRYWALL ON EITHER SIDE OF WALL BETWEEN MECHANICAL ROOM AND JANITOR ROOM.
- 5 EXISTING 65Ø FIRE LINE IN CEILING SPACE.

NEW WORK ELECTRICAL NOTES:

- (E1) PROVIDE TEMPORARY SUPPORT FOR ELECTRICAL EQUIPMENT DURING THE CEILING REMOVAL AND REINSTALLATION ASSOCIATED WITH PIPING WORK.
- (E2) EXISTING CHUBB EDWARDS EST QUICK START FIRE ALARM PANEL TO BE MODIFIED TO INCORPORATE NEW SPRINKLER TAMPER SWITCHES.
- (E3) PROVIDE THREE NEW SPRINKLER TAMPER SWITCH MODULES. EACH TAMPER SWITCH IS TO ANNUNCIATE INDIVIDUALLY ON FIRE ALARM SYSTEM. REFER TO DETAIL 1/M-6000 AND 2/M-6000 FOR CORRESPONDING VALVE LOCATION.
- (E4) EXISTING SPRINKLER FLOW AND PRESSURE SWITCHES (TWO IN TOTAL) ARE TO BE REUSED. DISCONNECT AND RECONNECT AS REQUIRED.
- (E5) REFER TO DETAIL 1/M-6000 FOR ELECTRICAL ENCLOSURE WHICH MAY BE DEMOLISHED TO ACCOMMODATE WORK.
- (E6) FIRESTOP PENETRATIONS OF JANITOR RM C-26.
- (E7) PROVIDE VERIFICATION REPORT FOR MODIFICATIONS.

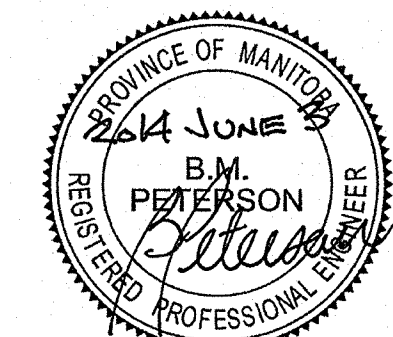


ENGINEER'S SEAL ABOVE APPLIES TO ELECTRICAL WORK ON THIS PROJECT ONLY

PIPING IDENTIFICATION	
SYMBOL	DESCRIPTION
---DCW---	DOMESTIC COLD WATER SUPPLY
—FPW—	FIRE PROTECTION WATER
—○—	PIPE DROP
—○—	PIPE RISE
—○—	PIPE TEE DOWN
—○—	PIPE TEE UP
—▶—	FLOW DIRECTION
▨	DEMOLITION

ABBREVIATIONS	
ABB	DESCRIPTION
DCVAF	DOUBLE CHECK VALVE ASSEMBLY FOR FIRE PROTECTION
GALV	GALVANIZED
MECH	MECHANICAL
RM	ROOM
WM	WATERMAIN

- NOTES:**
- GENERAL NOTES:**
1. MECHANICAL CONTRACTOR TO SITE VERIFY EXISTING CONDITIONS BEFORE COMMENCING ANY WORK.
 2. COMPLETE ALL WORK IN CONFORMANCE WITH THE REQUIREMENTS OF NFPA 13-2013 "STANDARD FOR THE INSTALLATION OF SPRINKLER SYSTEMS" AND NFPA 25-2011. "STANDARD FOR THE INSPECTION, TESTING, AND MAINTENANCE OF WATER-BASED FIRE PROTECTION SYSTEMS".



This drawing has been prepared for the use of AECOM's client and may not be used, reproduced or relied upon by third parties, except as agreed by AECOM and the client, as required by law or for use by governmental reviewing agencies. AECOM accepts no responsibility, and denies any liability whatsoever, to any party that modifies this drawing without AECOM's express written consent. Do not scale this document. All measurements must be obtained from stated dimensions.

No.	REVISION/DESCRIPTION	BY	DATE
0	ISSUED FOR TENDER	DJP	2014.05.04

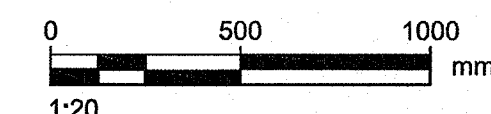
DRAWN	DP	CHECKED	RT	DESIGNED	RT	APPROVED	BP
DATE	2014.05.02	USER					

THE CITY OF WINNIPEG
PLANNING, PROPERTY AND
DEVELOPMENT DEPARTMENT
MUNICIPAL ACCOMMODATIONS DIVISION
3-65 GARRY STREET, R3C 4K4

PROJECT
WINNIPEG SQUARE
FIRE PROTECTION
UPGRADE
365 MAIN STREET

SHEET TITLE
MECHANICAL
MAIN FLOOR PLAN
DEMOLITION

METRIC
WHOLE NUMBERS INDICATE MILLIMETRES
DECIMALIZED NUMBERS INDICATE METRES



SCALE	PROJECT No:	SHEET No:
AS SHOWN	60319294	M-1000