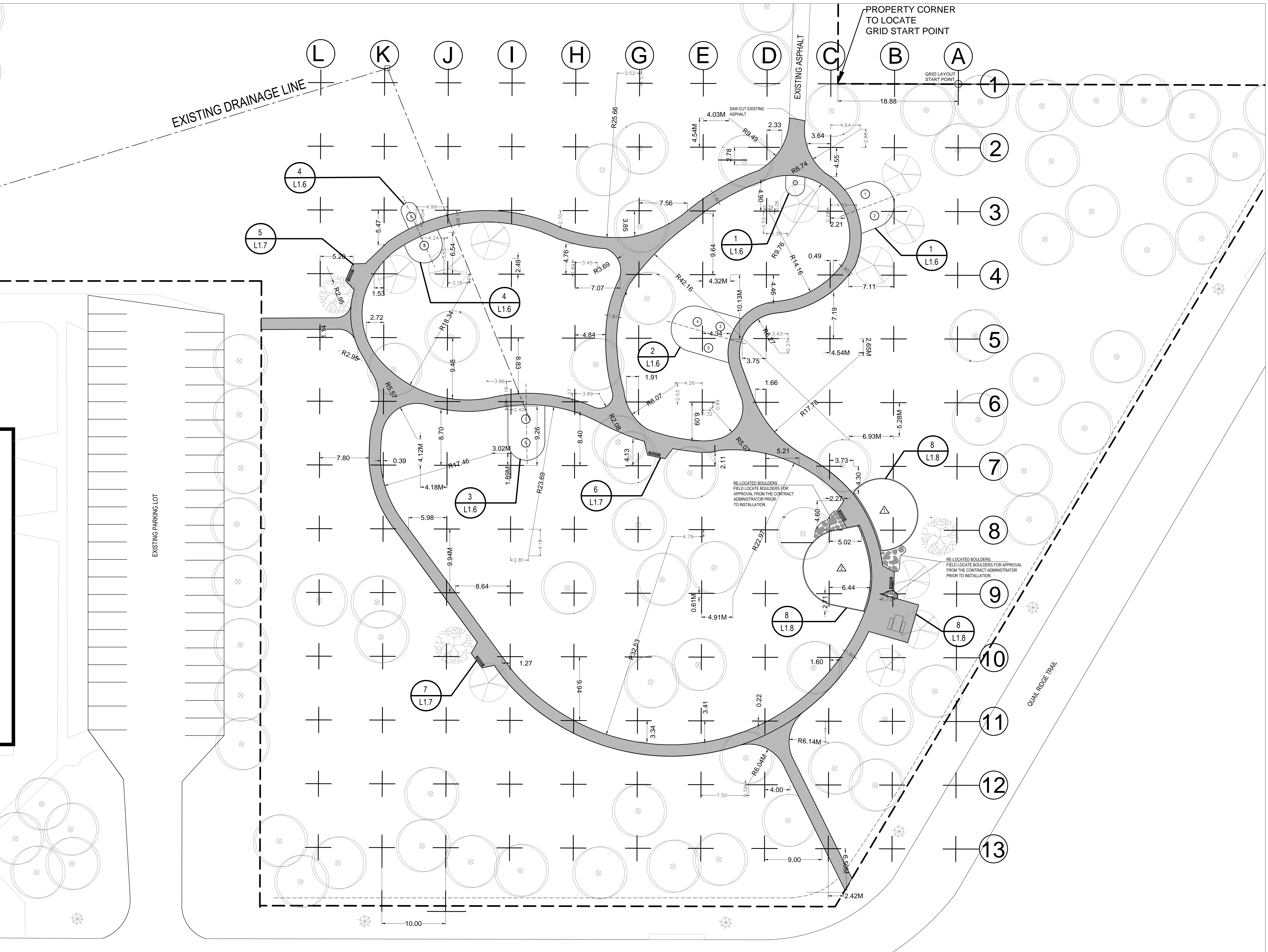
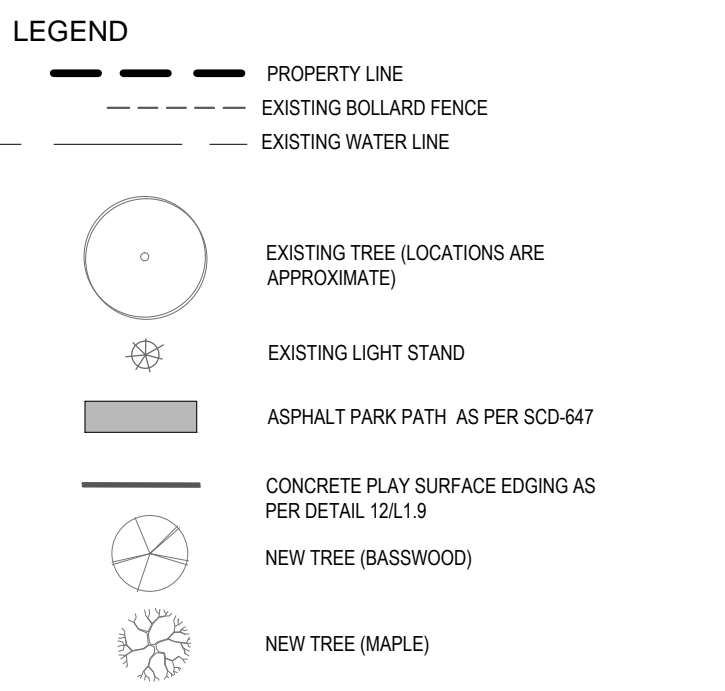


EXISTING DRAINAGE LINE

PROPERTY CORNER TO LOCATE GRID START POINT

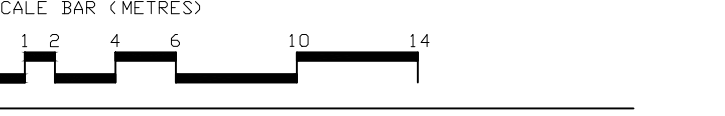


- HARD LANDSCAPE GENERAL NOTES**
- 1) CONDUCT ALL WORK IN ACCORDANCE WITH THE SPECIFICATIONS.
 - 2) ALL DIMENSIONS ARE IN METERS UNLESS OTHERWISE SPECIFIED.
 - 3) CONTRACT ADMINISTRATOR TO APPROVE LAYOUT FOR GENERAL CONFORMANCE. THE CONTRACTOR REMAINS RESPONSIBLE FOR ENSURING THE DESIGN IS IMPLEMENTED AS DRAWN.
 - 4) SURVEY AND STAKE OUT MAIN GRID LINES PRIOR TO PROCEEDING WITH SITE LAYOUT. CONFIRM WITH CONTRACT ADMINISTRATOR ON SITE PRIOR TO PROCEEDING WITH ROUGH GRADES.
 - 5) STAKEOUT DESIGN AND CONFIRM LAYOUT OF PATHS, BOULDERS, SITE FURNITURE, FITNESS EQUIPMENT, PLAY STRUCTURE AND SWINGS WITH CONTRACT ADMINISTRATOR PRIOR TO PLACING FINISHED SURFACE MATERIALS.
 - 6) ROUGH GRADE THE SUBGRADE AND COMPACT PRIOR TO PLACING BASE MATERIALS, ENSURING POSITIVE DRAINAGE OF SUBSTRATE AS PER THE SPECIFICATIONS.
 - 8) INSTALL ALL SUB-BASE AND BASE MATERIALS IN ACCORDANCE WITH DRAWINGS AND THE SPECIFICATIONS.
 - 9) INSTALL HARD SURFACE MATERIALS IN ACCORDANCE WITH DRAWINGS AND THE SPECIFICATIONS.
 - 10) INSTALL FITNESS EQUIPMENT AND PLAYGROUND EQUIPMENT AS PER MANUFACTURERS SPECIFICATIONS AND CUT SHEETS.
 - 11) PLACE MATERIALS TO FORM, SMOOTH, UNBROKEN, CONTINUOUS AND ACCESSIBLE FINISHED SURFACES CONFORMING TO DESIGN GRADES AND DETAILS.
 - 12) ENSURE ADJACENT SURFACES MEET FLUSH AND TRUE WITHOUT BREAKS, RIDGES OR TRIPPING HAZARDS.
 - 13) INSTALL HARD LANDSCAPE SURFACES PRIOR TO SOFT LANDSCAPE SURFACES UNLESS OTHERWISE AUTHORIZED BY THE CONTRACT ADMINISTRATOR.
 - 14) OBTAIN APPROVAL OF INSTALLED SURFACE FROM THE CONTRACT ADMINISTRATOR AND REPAIR ANY NOTED DEFICIENCIES AS SOON AS POSSIBLE.
 - 15) KEEP FINISHED SURFACE CLEAN OF ALL CONSTRUCTION DEBRIS AND EXTRANEOUS MATERIALS.
 - 16) PROTECT FINISHED SURFACES DURING ONGOING CONSTRUCTION OF ALL SITE WORKS.
 - 17) CONTRACT THE CONTRACT ADMINISTRATOR IMMEDIATELY IF THERE SHOULD BE A DISCREPANCY BETWEEN THE DRAWING AND EXISTING CONDITIONS.
 - 18) OBTAIN FINAL APPROVAL OF ALL SURFACES FROM THE CONTRACT ADMINISTRATOR PRIOR TO DEMOBILIZATION AND PROJECT CLOSE OUT.



- NORWELL FITNESS EQUIPMENT LAYOUT**
- 1 NW201 - Air Walker
 - 2 NW202 - Cross Trainer
 - 3 NW101 - Chest
 - 4 NW102 - Back
 - 5 NW103 - Sit Up
 - 6 NW104 - Pull Up
 - 7 NW105 - Bar
 - 8 NW401 - Stetch
 - 9 NW204 - Hip Flex
 - 10 NW501 - Bench

- KOMPAN JUNIOR PLAYGROUND EQUIPMENT**
- ELE400209 "FLOW ONE" PLAY STRUCTURE
 - KSW910-2B-2I SWINGS



No.	Revisions	Date	By
3	Revisions	2014/01/30	CCW
2	Final	2014/01/13	
1	68%	2013/12/28	CCW

Date: March 20, 2014 Scale: 1:250

Designed By	Drawn By	Checked By
CN/CWM	CWM	CN

SEALS

LOMBARD NORTH GROUP
287 Taché Ave.
Winnipeg, Manitoba R2H 2A1
Tel: (204) 943-8888 Fax: (204) 947-5696

THE CITY OF WINNIPEG
Planning, Property and Development Department
Planning and Land Use Division
Unit 15 - 30 Fort Street, Winnipeg, Manitoba R3C 4X5

Project Title
PAT PHILLIPS PARK & SHAUGHNESSY PARK FITNESS TRAILS

Sheet Title
PAT PHILLIPS PARK - LAYOUT PLAN

Project No. Drawing No.
L1.3