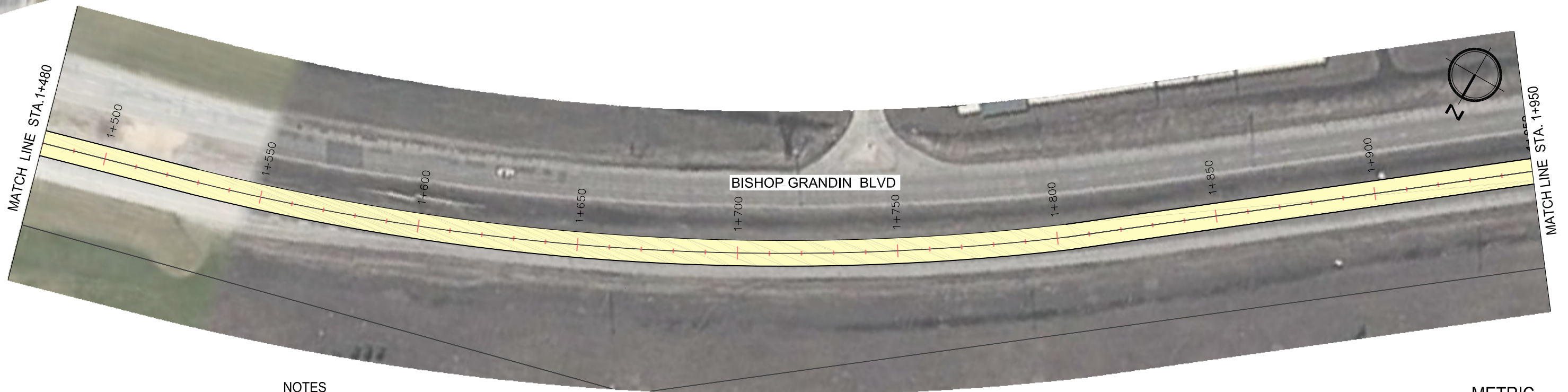
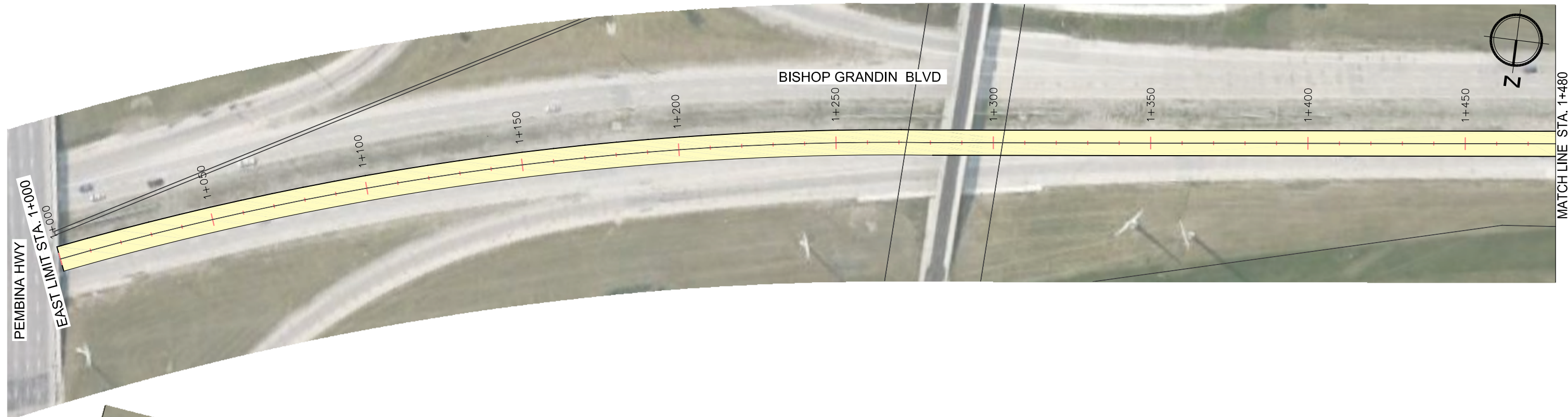


May 28, 2014 - 8:55am
 \\WP-FILERS\Project\5514001-5514032 - Consulting Services for 2014 Streets Maintenance Preservation Program\MM - dng\Asphalt\5514032-C-001-2_BISHOP_CDP.dwg - tab:WB Bishop Grandin 1



NOTES

1. ALL PARTIAL DEPTH JOINT REPAIRS, FULL DEPTH JOINT REPAIRS, AND SLAB REPAIR(S) WILL BE IDENTIFIED AND MARKED ON SITE BY THE CONTRACT ADMINISTRATOR.
2. THE CONTRACTOR WILL ARRANGE WITH THE CONTRACT ADMINISTRATOR AN ON SITE WALK THROUGH TO VERIFY ALL REPAIR LOCATIONS.

METRIC
 WHOLE NUMBERS INDICATE MILLIMETRES
 DECIMALIZED NUMBERS INDICATE METRES



LEGEND

- ASPHALT OVERLAY
- CONCRETE PAVEMENT PRESERVATION

LOCATIONS APPROVED UNDERGROUND STRUCTURES

SIGNED BY:	DATE

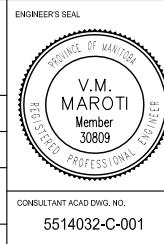
LOCATION OF UNDERGROUND STRUCTURES AS SHOWN ARE BASED ON THE BEST INFORMATION AVAILABLE BUT NO GUARANTEE IS GIVEN THAT ALL EXISTING UTILITIES ARE SHOWN OR THAT THE GIVEN LOCATIONS ARE EXACT CONFIRMATION OF EXISTENCE AND EXACT LOCATION OF ALL SERVICES MUST BE OBTAINED FROM THE INDIVIDUAL UTILITIES BEFORE PROCEEDING WITH CONSTRUCTION.

NO.	REVISIONS	DATE	BY
1	ISSUED FOR TENDER	14/05/28	VMM
0	ISSUED FOR REVIEW	14/04/16	VMM



MMM Group Limited,
 Suite 111 - 93 Lombard Ave.
 Winnipeg, MB R3B 3B1
 t. 204.943.3178
 f. 204.943.4948
 www.mmm.ca

DESIGNED BY	B.Q.D.	CHECKED BY	V.M.M.
DRAWN BY	S.B.	APPROVED BY	V.M.M.
HOR. SCALE	1:1250	RELEASED FOR CONSTRUCTION	
VERTICAL	-	DATE	14/05/28



2014 STREETS MAINTENANCE PRESERVATION PROGRAM
WB BISHOP GRANDIN BLVD
 FROM PEMBINA HWY OVERPASS TO WAVERLEY ST
 STA. 1+000 TO STA. 1+950
 CONCRETE PAVEMENT PRESERVATION

CITY DRAWING NUMBER	SHEET 1 OF 6
BID NO.	542-2014

NOTE:
 These design documents are prepared solely for the use by the party with whom the design professional has entered into a contract and there are no representations of any kind made by the design professional to any party with whom the design professional has not entered into a contract.