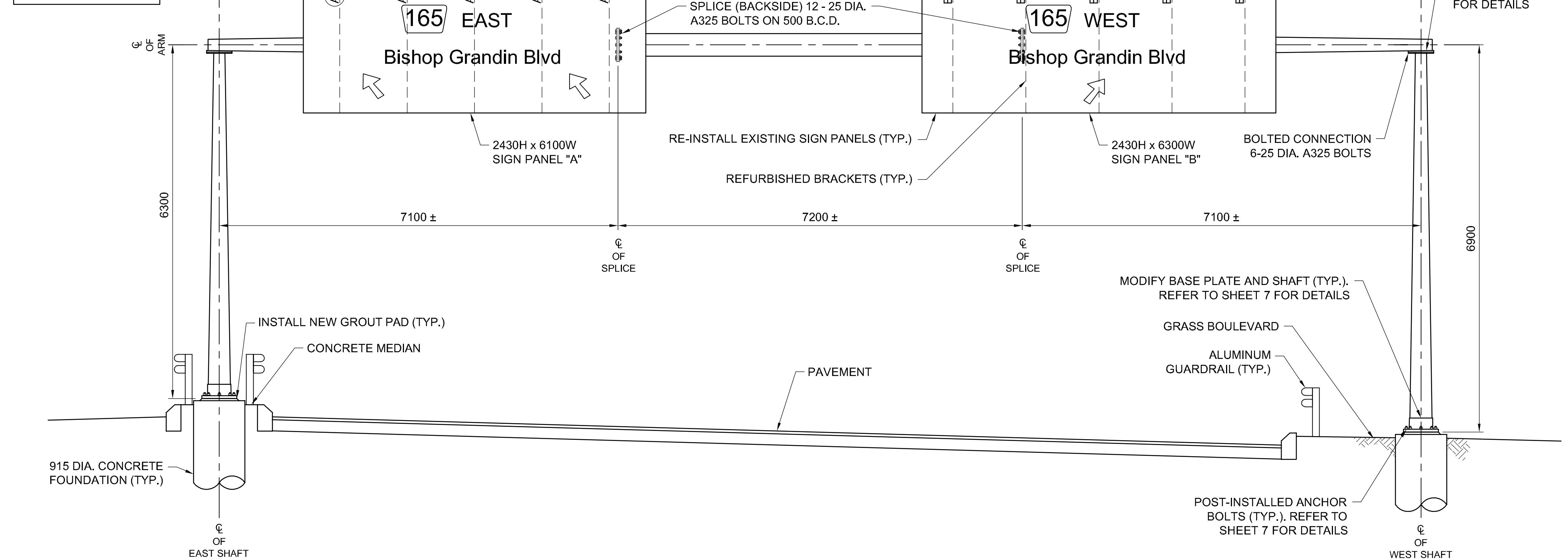


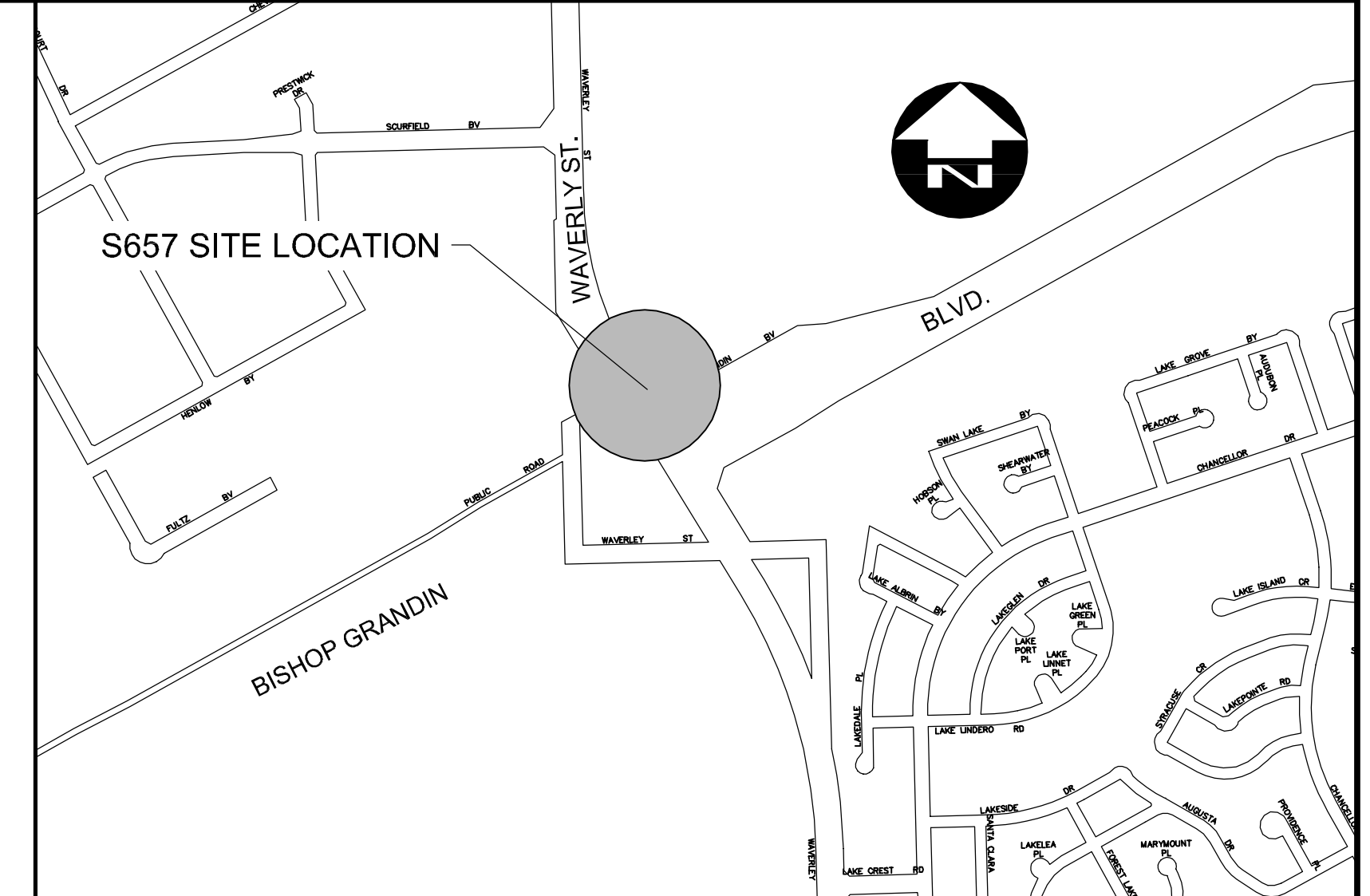
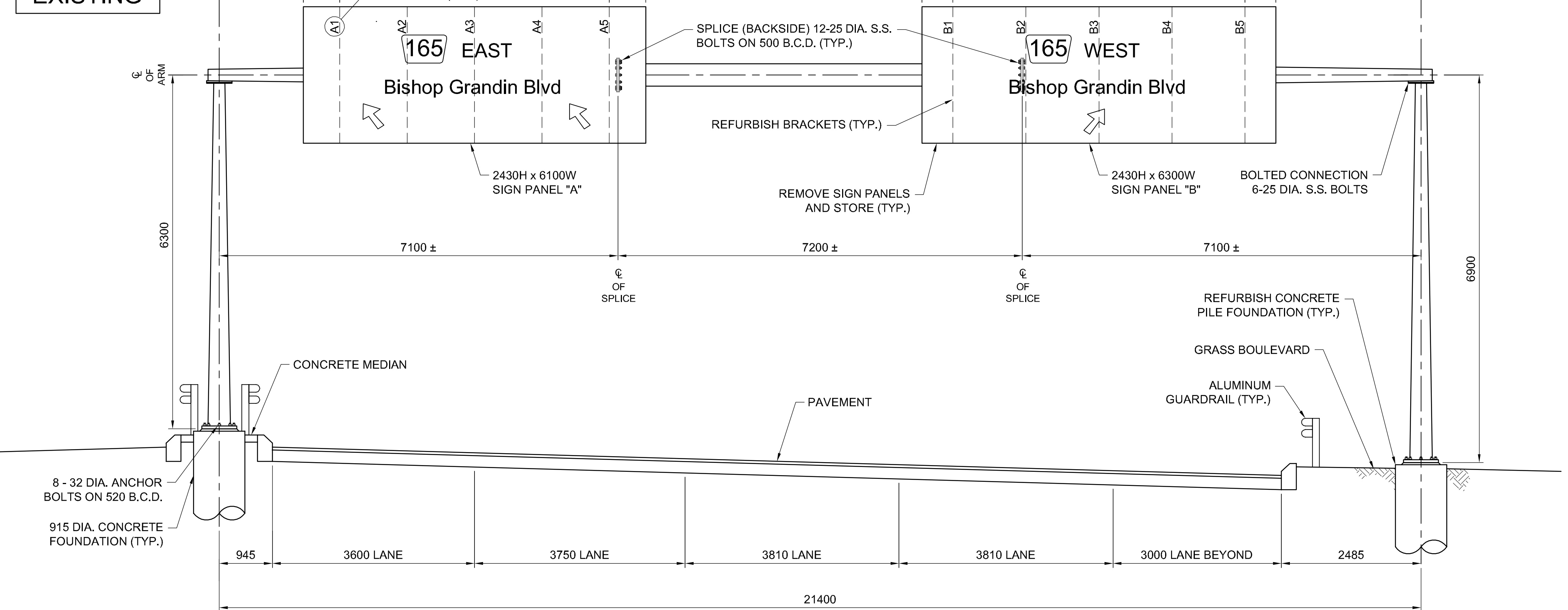
PROPOSED DIMENSIONS ARE APPROX. ONLY. THE CONTRACT ADMINISTRATOR WILL DIRECT FINAL INSTALLED LOCATION OF SIGN PANELS.

**PROPOSED**

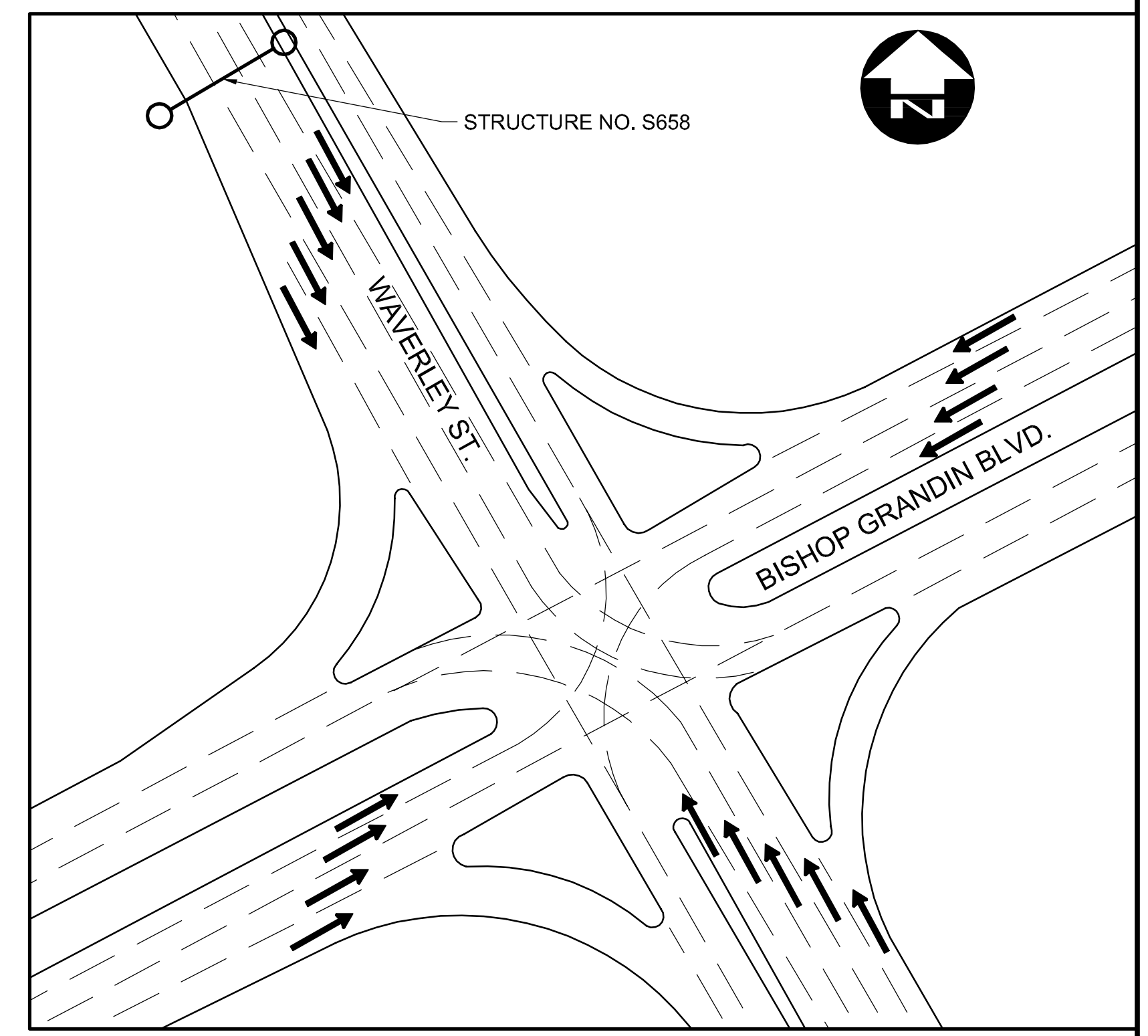


EXISTING DIMENSIONS ARE APPROX. ONLY.

**EXISTING**



LOCATION MAP



SITE PLAN

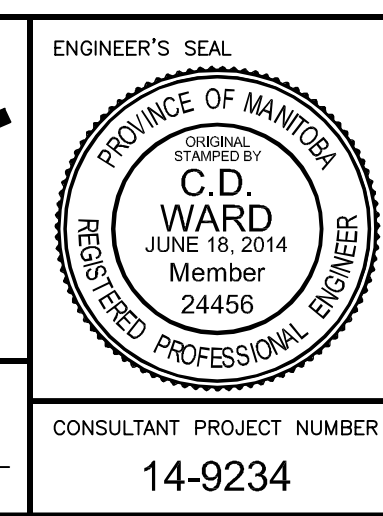
**NOTES:**

1. REPLACE EXISTING S.S. BOLTS WITH ASTM A325 TYPE 1 HOT-DIP GALVANIZED BOLTS C/W 1 NUT AND 2 WASHERS, LENGTH OF BOLT TO SUIT.
2. CLIP WASHERS TO CLEAR AS DIRECTED BY THE CONTRACT ADMINISTRATOR.
3. APPROX. MASS OF EXISTING STEEL STRUCTURE: 2900kg.

**SITE ELEVATION - LOOKING SOUTH**  
OVERHEAD SIGN SUPPORT STRUCTURE No. S658



|                     |             |               |
|---------------------|-------------|---------------|
| B.M. ELEV.          | DESIGNED BY | CDW           |
|                     | DRAWN BY    | KB            |
|                     | CHECKED BY  | SSR           |
|                     | APPROVED BY | -             |
|                     | HOR. SCALE  | -             |
|                     | VERTICAL    | -             |
| 0 ISSUED FOR TENDER | 06/18/14    | CDW           |
| NO. REVISIONS       | DATE        | BY            |
|                     | DATE        | JUNE 18, 2014 |



**THE CITY OF WINNIPEG**  
PUBLIC WORKS DEPARTMENT

STEEL OVERHEAD SIGN SUPPORT STRUCTURES - 2014 MAINTENANCE WORKS

S658 WAVERLEY ST. SB, NORTH OF BISHOP GRANDIN BLVD.

CITY DRAWING NUMBER: S658-14-01  
SHEET 6 OF 7  
CONSULTANT DRAWING NUMBER: OHSS-14-06

CONSULTANT PROJECT NUMBER: 14-9234

METRIC

WHOLE NUMBERS INDICATE MILLIMETRES  
DECIMALIZED NUMBERS INDICATE METRES

G:\CAD\149234\11-Structural\01-Contract\OHSS-14-06.dwg