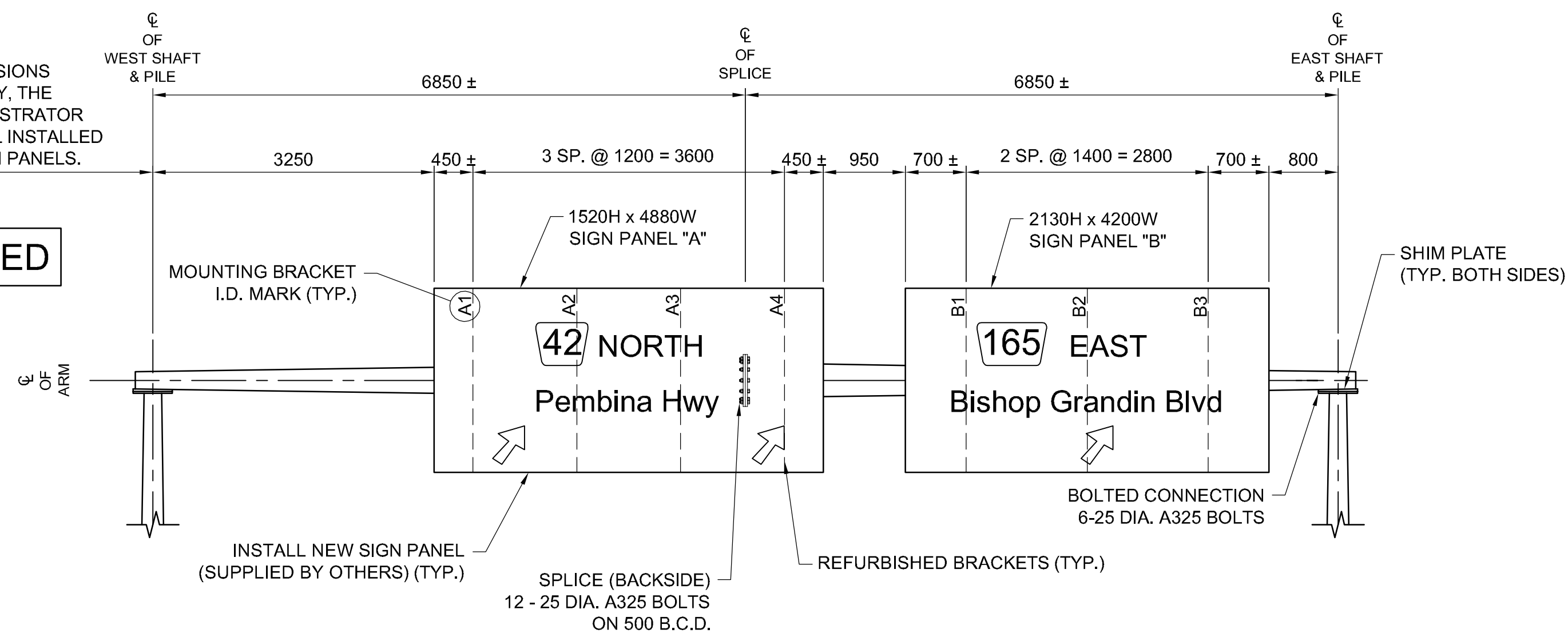


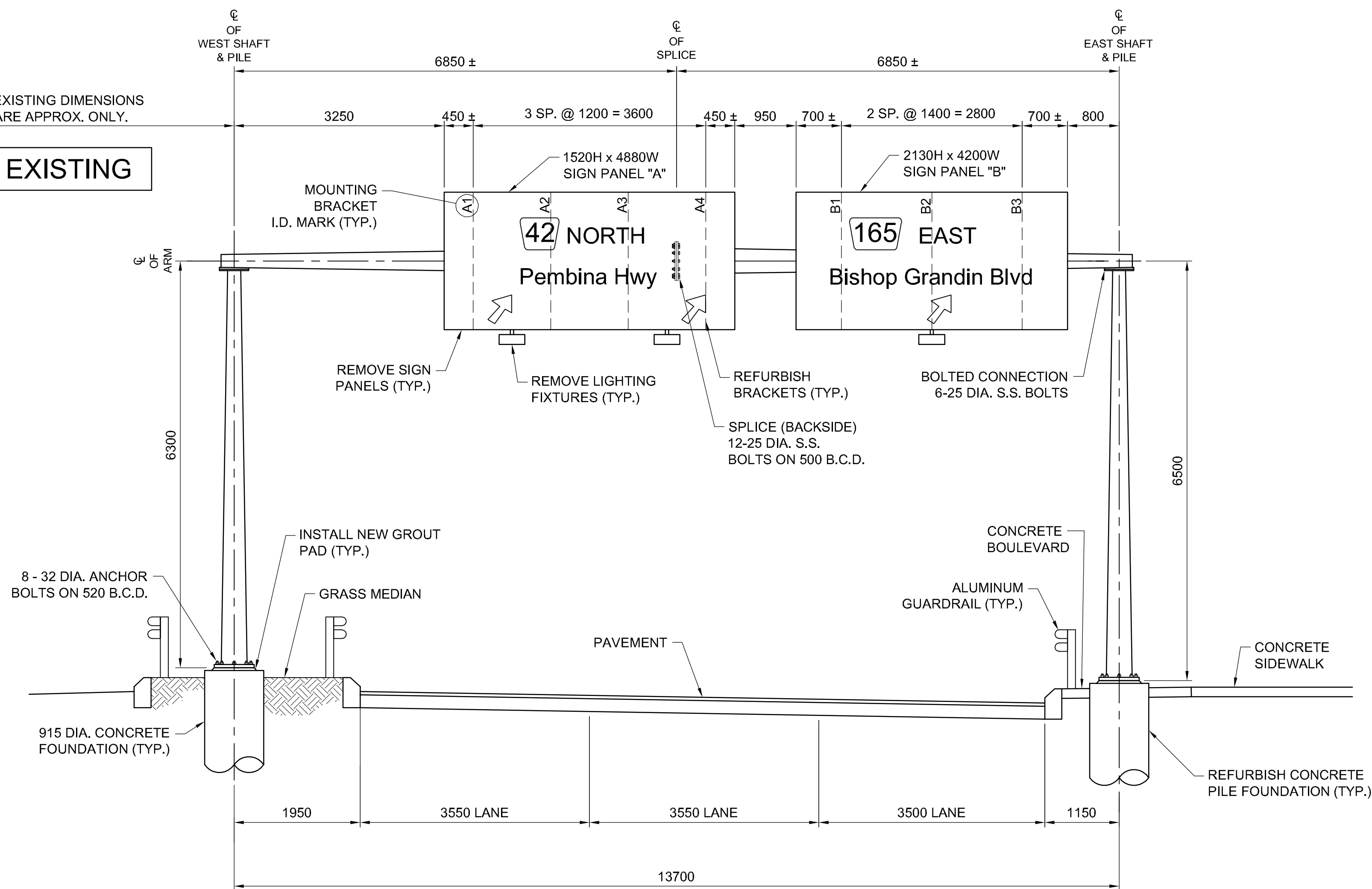
PROPOSED DIMENSIONS ARE APPROX. ONLY. THE CONTRACT ADMINISTRATOR WILL DIRECT FINAL INSTALLED LOCATION OF SIGN PANELS.

PROPOSED



EXISTING DIMENSIONS ARE APPROX. ONLY.

EXISTING



SITE ELEVATION - LOOKING NORTH
OVERHEAD SIGN SUPPORT STRUCTURE No. S657

NOTES:

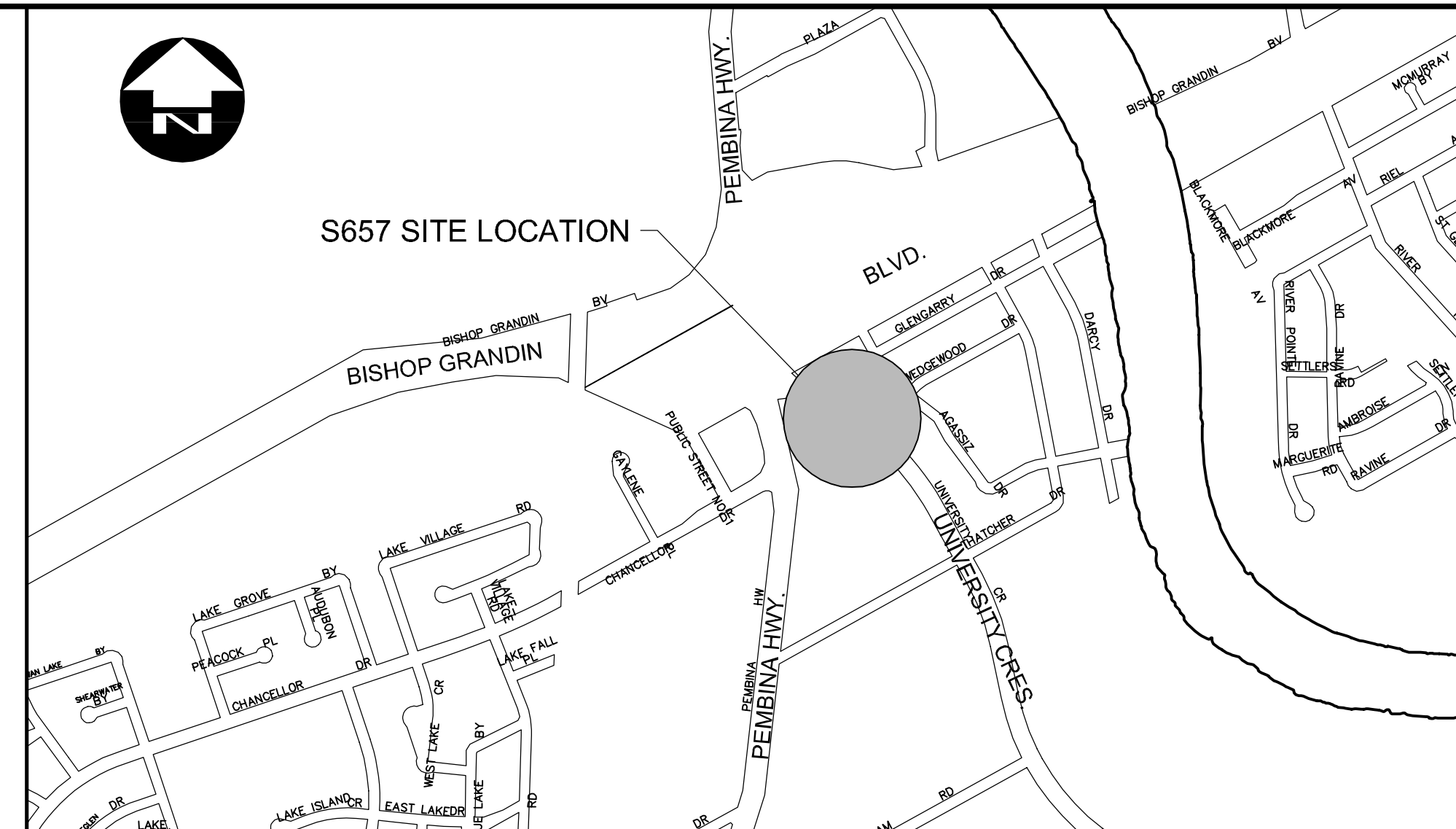
1. REPLACE EXISTING S.S. BOLTS WITH ASTM A325 TYPE 1 HOT-DIP GALVANIZED BOLTS C/W 1 NUT AND 2 WASHERS, LENGTH OF BOLT TO SUIT.
2. CLIP WASHERS TO CLEAR AS DIRECTED BY THE CONTRACT ADMINISTRATOR.
3. APPROX. MASS OF EXISTING STEEL STRUCTURE: 2000kg

SHIM PLATE NOTES:

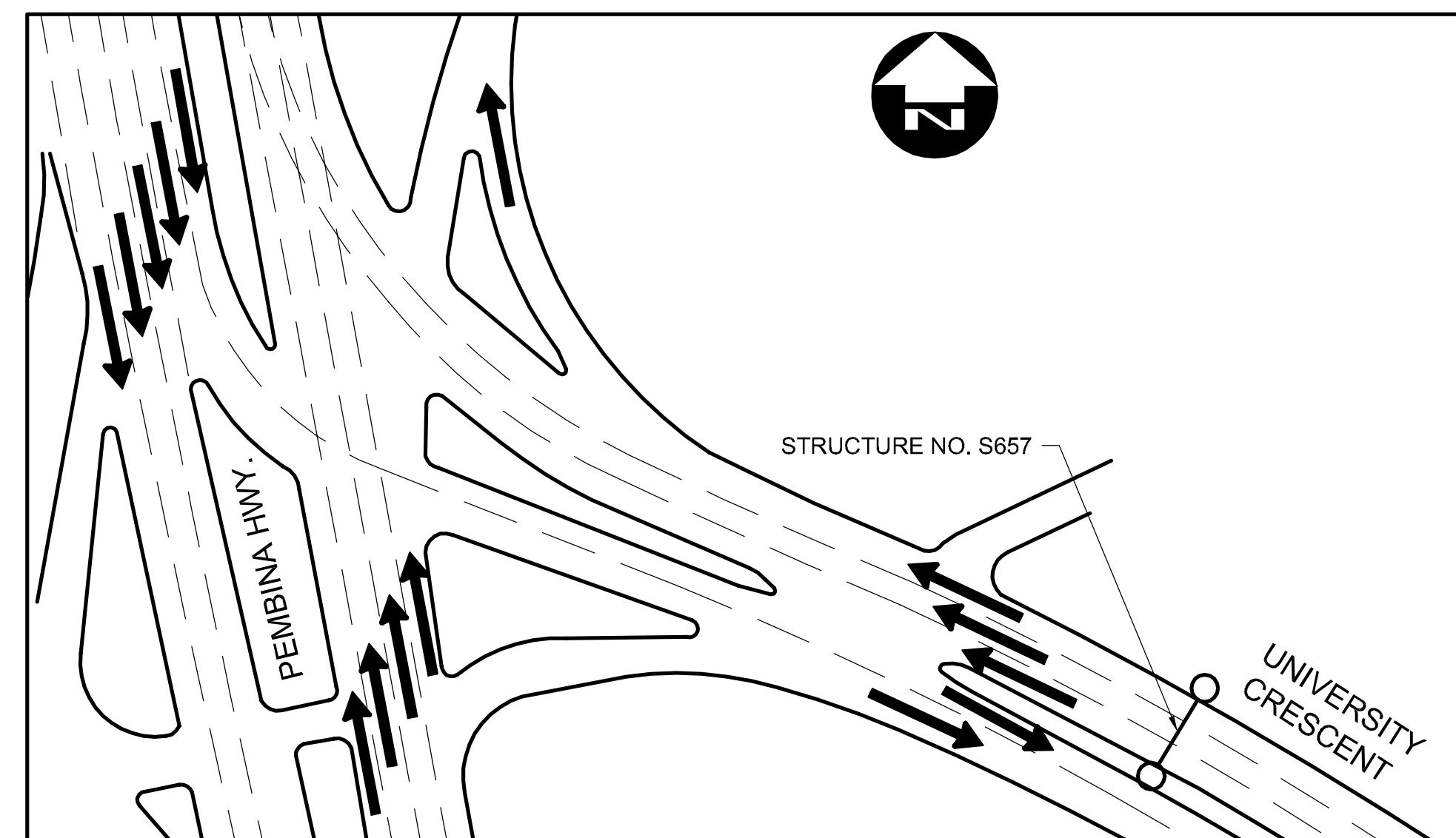
4. CONTRACTOR SHALL PERFORM DETAILED MEASUREMENTS IN THE FIELD TO DETERMINE THICKNESS OF REQUIRED SHIM PLATE. MEASUREMENTS SHALL BE OBTAINED WHEN CROSS-ARM IS FULLY LOADED (SIGN PANELS AND BRACKETS ATTACHED) AND UNDER ITS OWN SELF WEIGHT.
5. DIMENSION A SHALL BE THE MEASURED GAP BETWEEN THE PLATES AT THE LOCATION SHOWN.
6. DIMENSION B SHALL BE THE MEASURED GAP BETWEEN THE PLATES AT THE LOCATION SHOWN.

METRIC

WHOLE NUMBERS INDICATE MILLIMETRES
DECIMALIZED NUMBERS INDICATE METRES

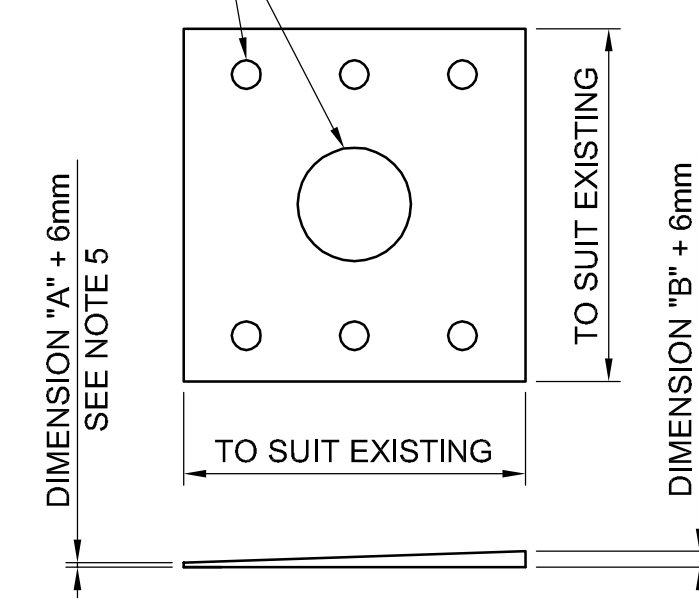


LOCATION MAP

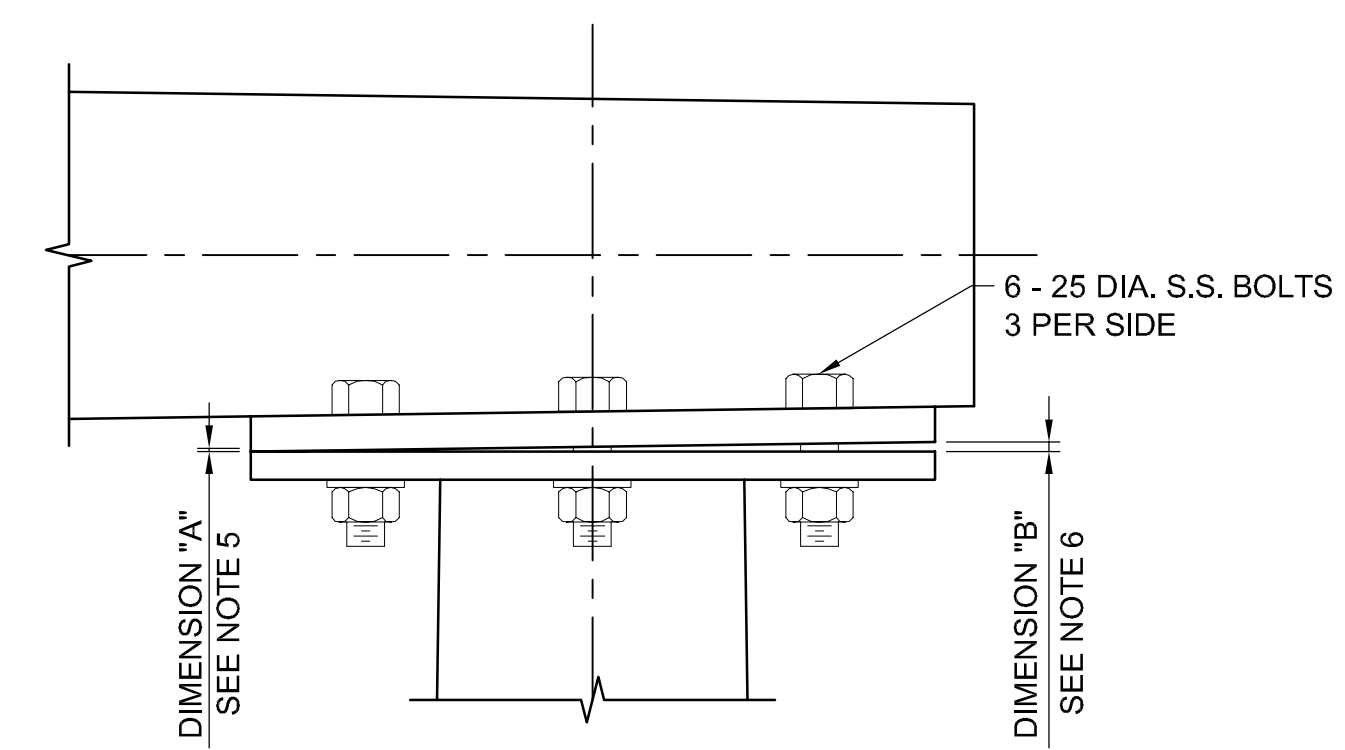


SITE PLAN

SIZE AND SPACING OF HOLES TO MATCH EXISTING TOP PLATE



SHIM PLATES AT SUPPORT FLANGE
1:10
TWO THUS



TYPICAL EXISTING FLANGE CONNECTION
1:5

B.M. ELEV.	DESIGNED BY CDW		ENGINEER'S SEAL 		CITY DRAWING NUMBER S657-14-01
	DRAWN BY KB		CONSULTANT PROJECT NUMBER 14-9234		STEEL OVERHEAD SIGN SUPPORT STRUCTURES - 2014 MAINTENANCE WORKS
	CHECKED BY SSR		RELEASED FOR CONSTRUCTION	S657 UNIVERSITY CRES. WB, EAST OF PEMBINA HWY.	CONSULTANT DRAWING NUMBER OHSS-14-05
	APPROVED BY -		VERTICAL		
0 ISSUED FOR TENDER	06/18/14	CDW			
NO. REVISIONS	DATE	BY	DATE	JUNE 18, 2014	

G:\CAD\149234\11-Structural\01-Contract\OHSS-14-05.dwg