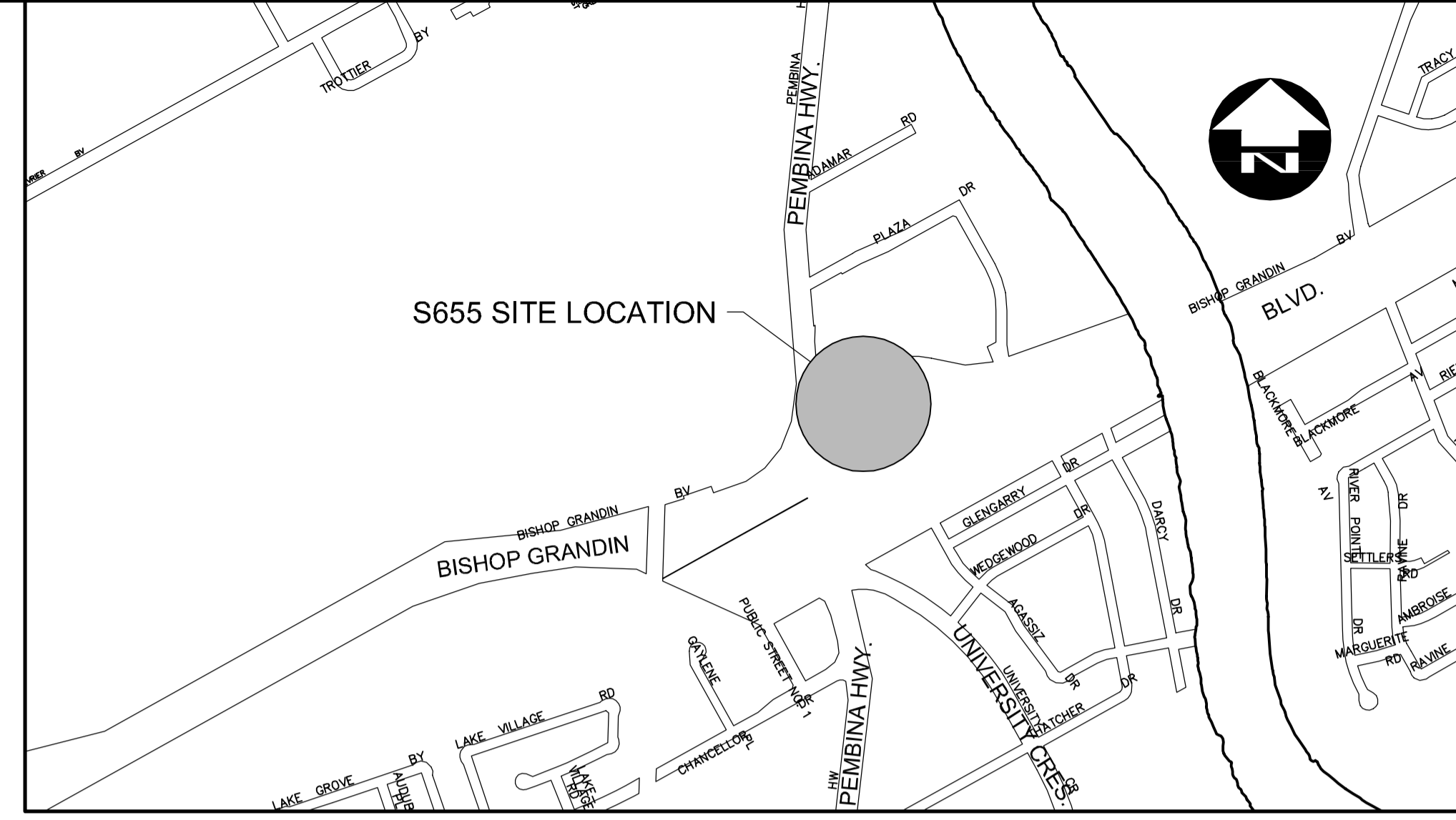
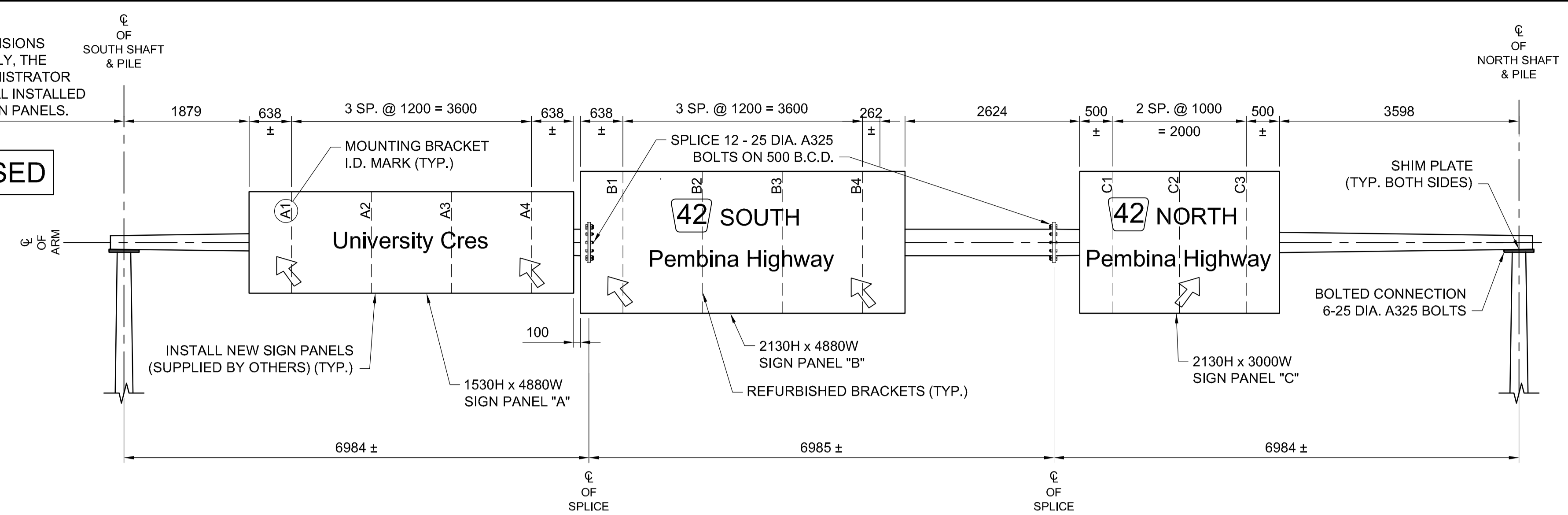


PROPOSED DIMENSIONS ARE APPROX. ONLY, THE CONTRACT ADMINISTRATOR WILL DIRECT FINAL INSTALLED LOCATION OF SIGN PANELS.

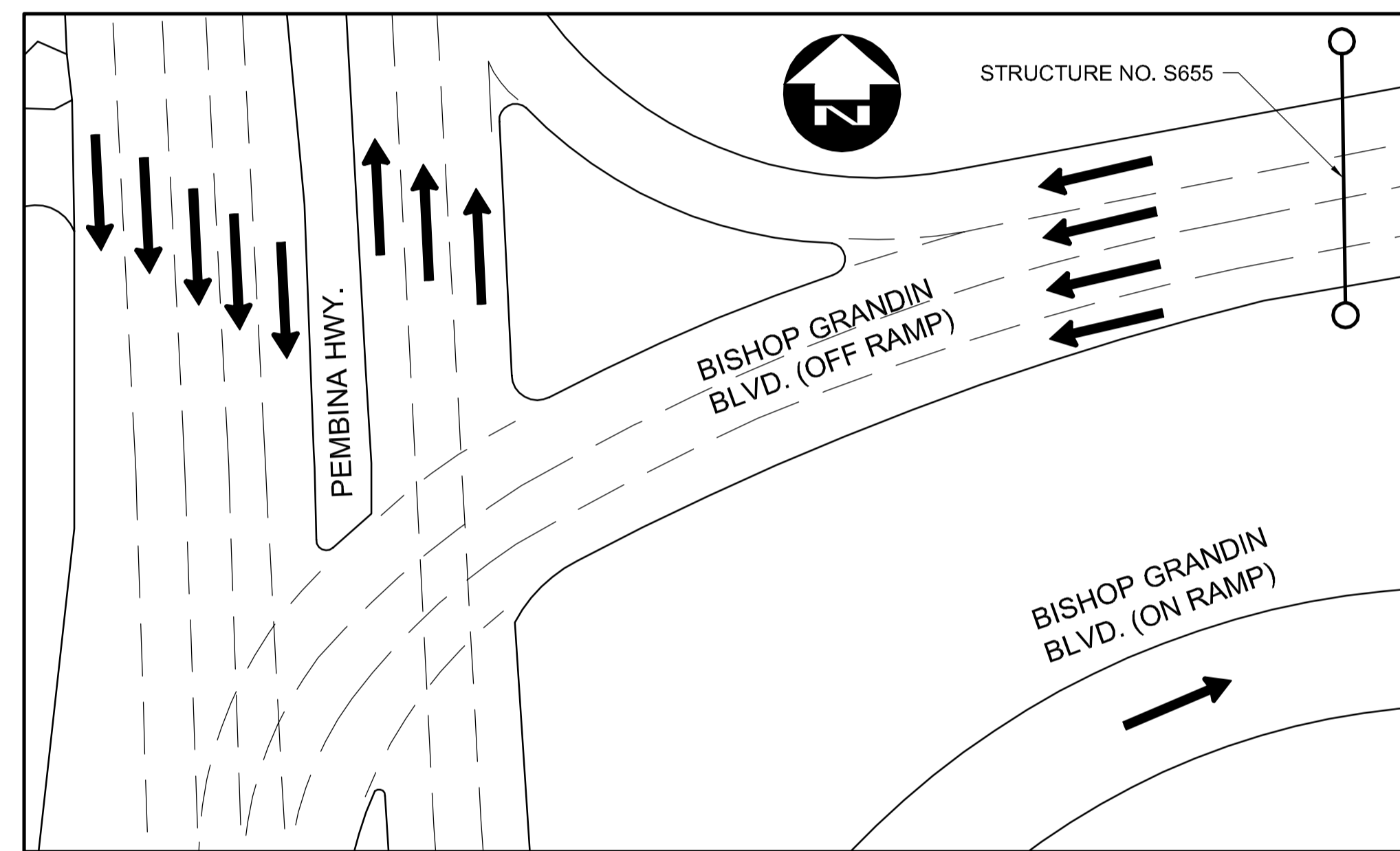
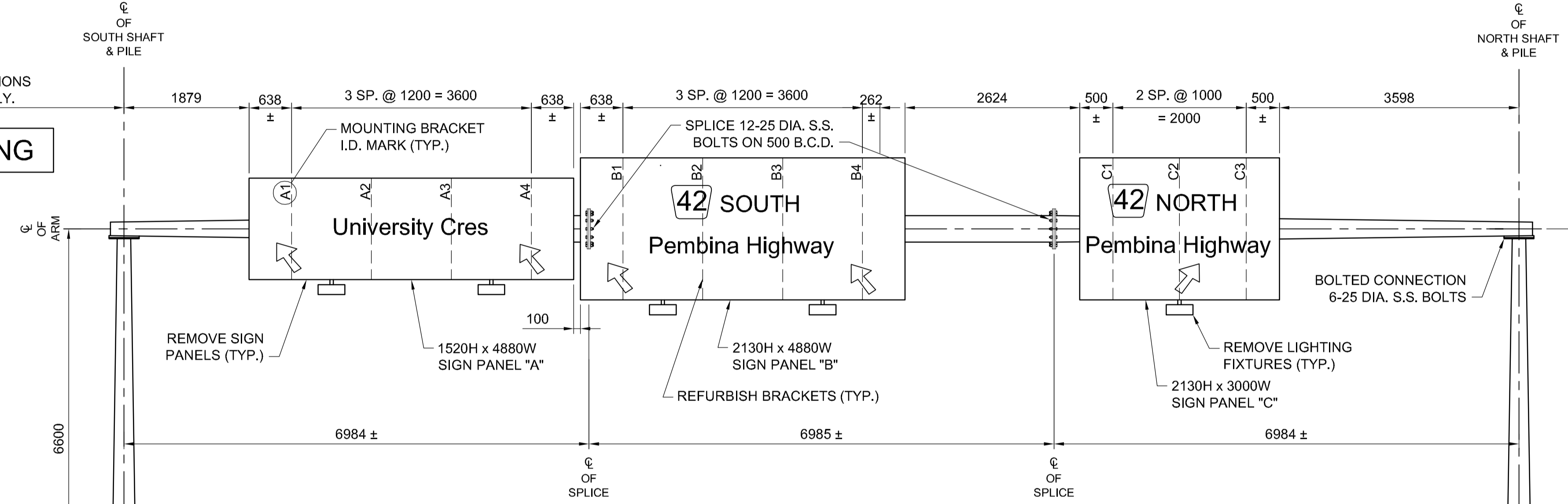
PROPOSED



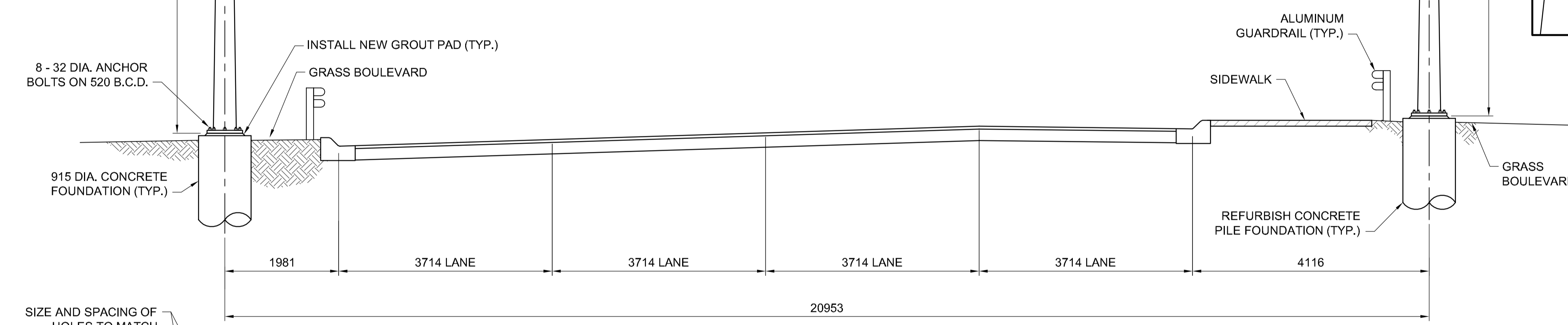
LOCATION MAP

EXISTING DIMENSIONS ARE APPROX. ONLY.

EXISTING



SITE PLAN



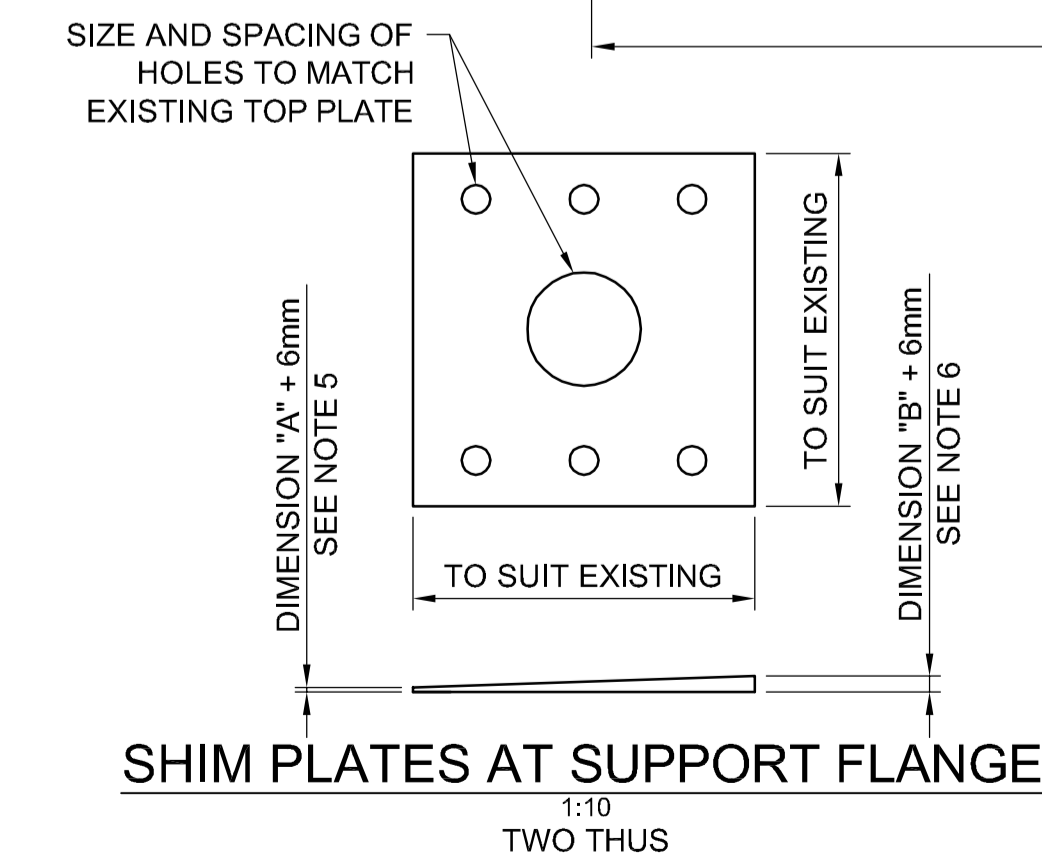
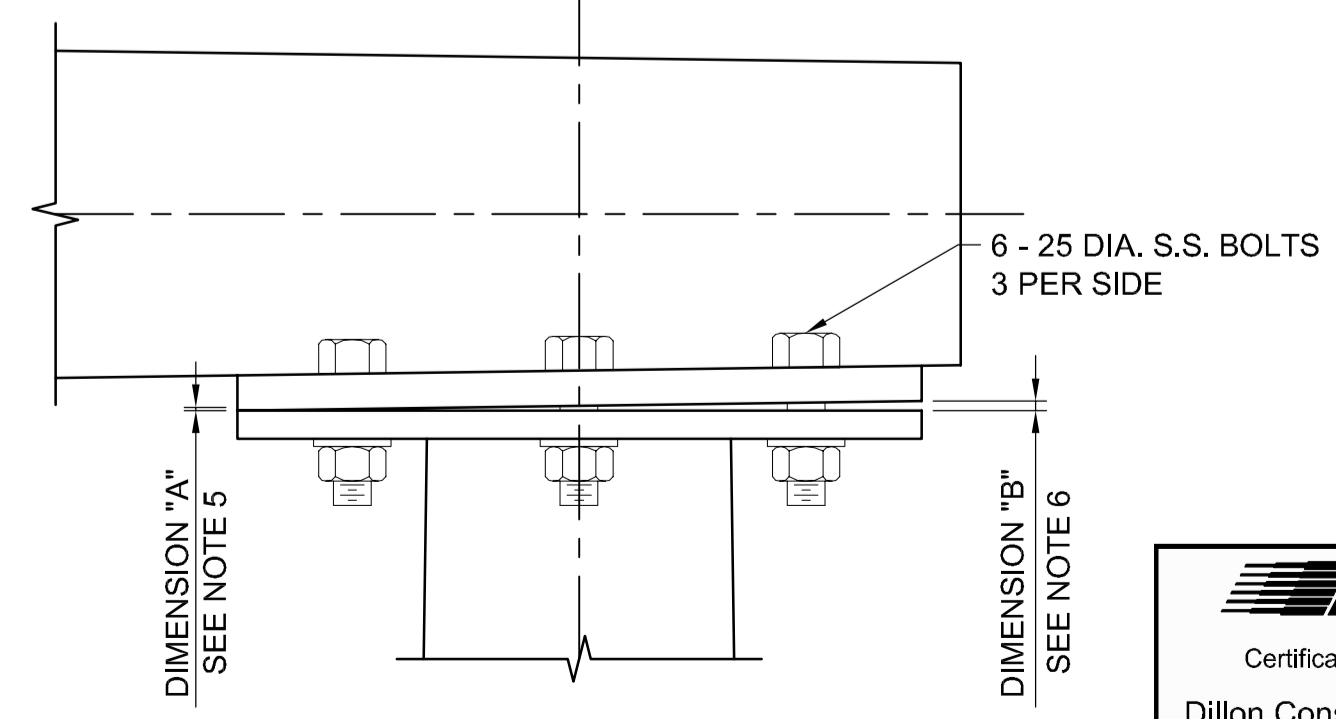
NOTES:

1. REPLACE EXISTING S.S. BOLTS WITH ASTM A325 TYPE 1 HOT-DIP GALVANIZED BOLTS C/W 1 NUT AND 2 WASHERS. LENGTH OF BOLT TO SUIT.
2. CLIP WASHERS TO CLEAR AS DIRECTED BY THE CONTRACT ADMINISTRATOR.
3. APPROX. MASS OF EXISTING STEEL STRUCTURE: 2900kg.

SHIM PLATE NOTES:

4. CONTRACTOR SHALL PERFORM DETAILED MEASUREMENTS IN THE FIELD TO DETERMINE THICKNESS OF REQUIRED SHIM PLATE. MEASUREMENTS SHALL BE OBTAINED WHEN CROSS-ARM IS FULLY LOADED (SIGN PANELS AND BRACKETS ATTACHED) AND UNDER ITS OWN SELF WEIGHT.
5. DIMENSION A SHALL BE THE MEASURED GAP BETWEEN THE PLATES AT THE LOCATION SHOWN.
6. DIMENSION B SHALL BE THE MEASURED GAP BETWEEN THE PLATES AT THE LOCATION SHOWN.

SITE ELEVATION - LOOKING WEST
OVERHEAD SIGN SUPPORT STRUCTURE No. S655



METRIC
WHOLE NUMBERS INDICATE MILLIMETRES
DECIMALIZED NUMBERS INDICATE METRES



B.M. ELEV.	DESIGNED BY	CDW
	DRAWN BY	KB
	CHECKED BY	SSR
	APPROVED BY	-
	HOR. SCALE	-
	VERTICAL	-
0 ISSUED FOR TENDER	06/18/14	CDW
NO. REVISIONS	DATE	BY
		DATE

DILLON CONSULTING

RELEASED FOR CONSTRUCTION

DATE

ENGINEER'S SEAL

PROVINCE OF MANITOBA

C.D. WARD

JUNE 18, 2014

Member 24456

REGISTERED PROFESSIONAL ENGINEER

CONSULTANT PROJECT NUMBER

14-9234

THE CITY OF WINNIPEG
PUBLIC WORKS DEPARTMENT

Winnipeg

STEEL OVERHEAD SIGN SUPPORT STRUCTURES - 2014 MAINTENANCE WORKS

S655 BISHOP GRANDIN BLVD. WB, 1ST STRUCTURE EAST OF PEMBINA HWY.

CITY DRAWING NUMBER: S655-14-01

SHEET 4 OF 7

CONSULTANT DRAWING NUMBER: OHSS-14-04

G:\CADD\149234\11-Structural\01-Contract\OHSS-14-04.dwg