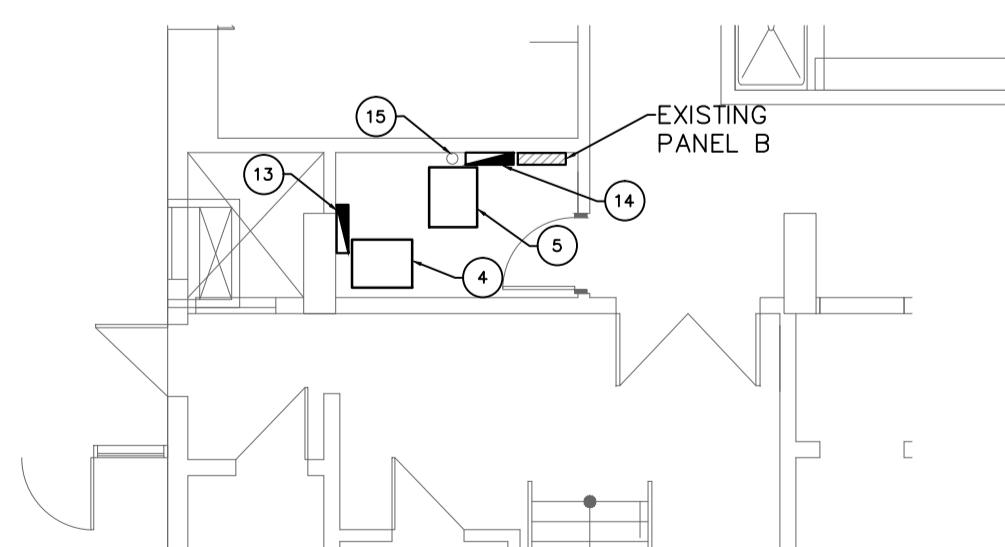


4	ISSUED FOR TENDER AND CONSTRUCTION	KO	04.06.14
3	ISSUED FOR FINAL REVIEW	KO	17.04.14
2	ISSUED FOR REVIEW	KO	20.02.14
1	ISSUED FOR REVIEW	KO	12.11.13

No.	REVISION/DESCRIPTION	BY	DATE
SEAL			

25 POSEIDON BAY - MAIN FLOOR PLAN POWER AND COMMUNICATIONS
 SCALE: 1/16"=1'-0"



11 MAIN FLOOR COMMUNICATION ROOM
 SCALE: 1/8"=1'-0"

KEY NOTES:

- PROVIDE 12-CAT6 CABLES COILED UP IN CEILING. HANG CABLES FROM A DEDICATED LARGE J-HOOK. ENSURE CABLES ARE TERMINATED WITH RJ-45 CONNECTORS. PROVIDE A COVER TO PROTECT THE CABLE CONNECTORS. CABLES ARE TO BE EACH OF 25FT. COILS FROM LOCATION OF J-HOOK. LOCATE J-HOOK NORTH OF COLUMN.
- PROVIDE 6 NEW DATA OUTLETS IN MULTI-GANG BOX. RECESS OUTLETS IF POSSIBLE.
- CONNECTION TO DEDICATED SWIMCLUB ROUTER.
- EXISTING CCTV SYSTEM. RECONNECT WITH A NEW CAT 6 CONNECTION FROM MDR
- EXISTING MAIN DATA RACK(MDR)
- LOCATE OUTLET NEAR LARGE SCREEN MONITOR.
- CABLING IN THIS AREA TO RUN BACK TO SDR-1
- CABLING IN THIS AREA TO RUN BACK TO SDR-2
- REMOVE OUTLETS FROM THIS LOCATION.
- CABLING IN THIS AREA TO RUN BACK TO MDR
- SEE LARGER PLAN.
- COORDINATE FINAL LOCATION ON SITE WITH CONTRACT ADMINISTRATOR.

- EXISTING SHAW WIFI (TO REMAIN AS-IS)
- EXISTING MTS. PUNCH DOWN BIX
- EXISTING TERRASSPAN FIBRE RISER FROM BELOW
- PROVIDE A DEDICATED 120V, 15A DUPLEX RECEPTACLE AND #6 INSULATED GROUND FOR NEW DATA CABINET. RUN TO NEAREST PANEL WITH CAPACITY.
- RELOCATE SPEAKER, VOLUME CONTROL AND CONDUIT TO SUIT SDR-2 LOCATION. RELOCATE PERIPHERAL EQUIPMENT SUCH AS FIRE EXTINGUISHER, ETC AS REQUIRED. SDR-2 TO BE ADJACENT TO EXISTING SOUND CABINET.
- APPROXIMATE ROUTE OF NEW FIBRE RUN TO THIRD FLOOR SDR-3
- REMOVE EXISTING SURFACE MOUNTED OUTLETS AND COILED CABLE. THESE DO CONNECT BACK TO A RACK. CONFIRM ON SITE WITH CONTRACT ADMINISTRATOR.
- REMOVE OLD TEMPORARY WIRING AND PERMANENTLY CONNECT BACK TO THE MDR WITH CAT 6 CABLE.
- PROVIDE A NEW RECEPTACLE AT THIS LOCATION. WIRE AND CONNECT BACK TO THE NEAREST PANEL WITH CAPACITY. USE A DEDICATED NEUTRAL CONDUCTOR.

DRAWING NOTES:

- DATA OUTLETS DESIGNATED AS FOLLOWS: N: NEW OUTLET, H: NEW OUTLET AT HIGH LEVEL. UNMARKED OUTLETS ARE EXISTING TO BE RE-CABLED WITH NEW CAT 6 CABLE.
- COORDINATE ALL CORING, DRILLING AND ANY WORK IN ASBESTOS IDENTIFIED AREAS. ENSURE CONTRACT ADMINISTRATOR DEEMS AREA CLEAR TO WORK BEFORE PROCEEDING.
- CONTRACTOR TO PERFORM SCANNING PRIOR TO CORING.
- RECEPTACLES SUPPLYING POWER TO DATA RACKS AND CABINETS ARE TO HAVE INTEGRAL TVSS PROTECTION. HUBBELL HRL52600WSA.
- IN AREAS EXPOSED TO MOISTURE OR IN HUMID ENVIRONMENTS, PROVIDE GASKETTED, SELF-CLOSING COVERS FOR DATA OUTLETS. USE PASS AND SEYMOUR #3723 WITH A BELDEN KEYCONNECT ADAPTER PLATE OR EQUAL. RECEPTACLES TO HAVE SELF CLOSING GASKETTED COVERS.

DRAWN	CHECKED	DESIGNED	APPROVED
KOLO	DH	KO	KO
DATE: 2013.09.20	USER APPROVAL		

THE CITY OF WINNIPEG
 PLANNING, PROPERTY AND
 DEVELOPMENT DEPARTMENT
 MUNICIPAL ACCOMMODATIONS DIVISION
 3-65 GARRY STREET, R3C 4K4

PROJECT
PAN AM POOL
NETWORK INFRASTRUCTURE UPGRADE
 499-2014
 25 POSEIDON BAY
 SHEET TITLE
MAIN FLOOR LEVEL
POWER AND COMMUNICATIONS

SCALE	PROJECT No:	SHEET No:
AS SHOWN	2013-034	E2