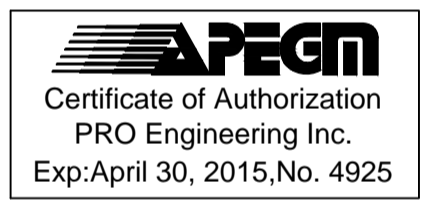
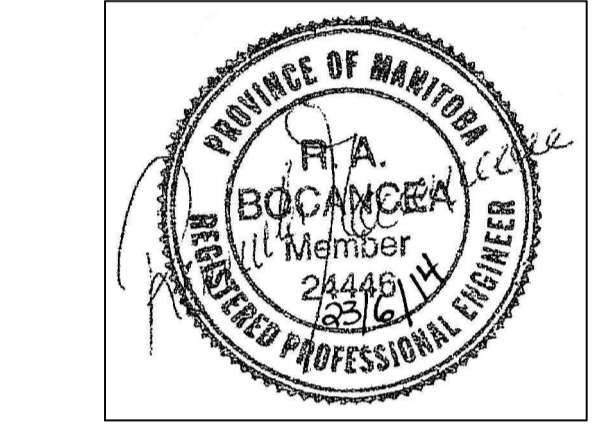
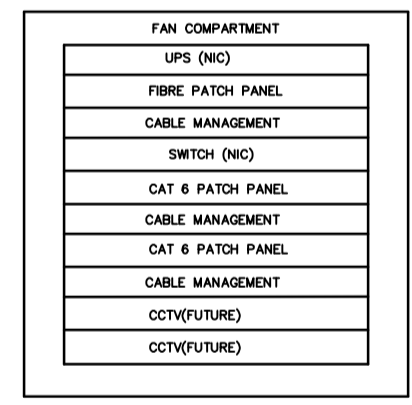
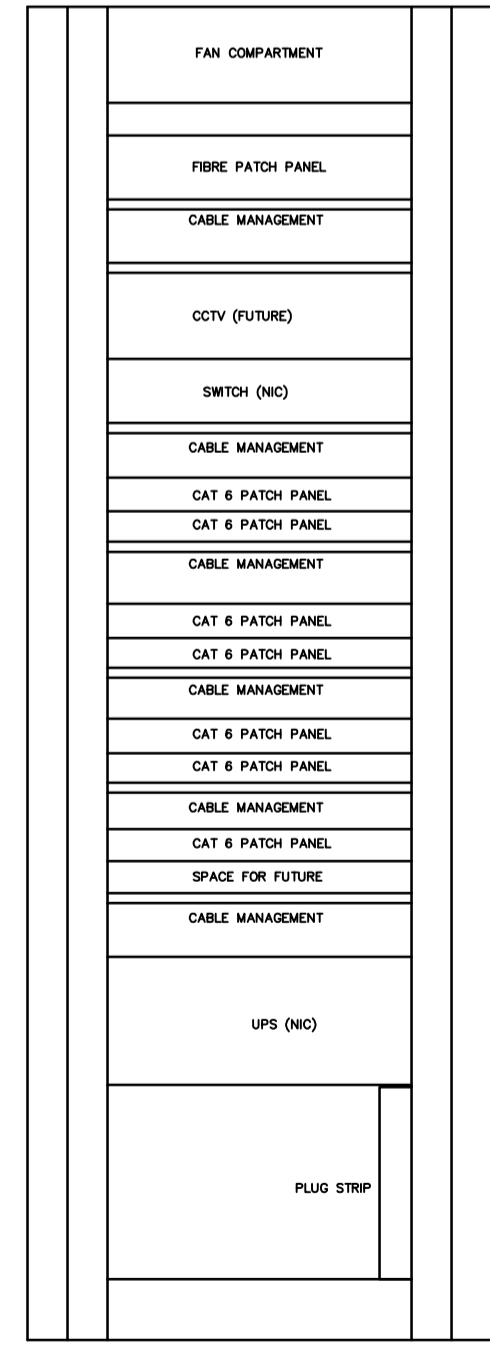


DATA CABLING NOTES:	
1	PROVIDE INSTALL A COMPLETE PATHWAY FROM OUTLET TO CABINET.
2	CABLING TO BE INSTALLED VIA EMT CONDUIT PATHWAY. PROVIDE ALL EXTENSIONS, SUPPORTS, SLEEVES, BUSHING, ETC AS REQUIRED.
3	LABEL PORTS AT BOTH ENDS. CONFIRM FINAL LABELLING PRIOR TO INSTALLATION.
4	NEW CAT 6 CABLING FOR ALL OUTLETS.
5	COORDINATE SUPPLY AND INSTALL OF CAT 6 PATCH CABLES. REFER TO SPECIFICATION FOR DETAILS.
6	REFER TO FIBRE CABLING RISER
7	NEW PATCH PANELS TO BE CAT 6, BELDEN 24 PORT PRELOADED. REFER TO SPEC.

FIBRE CABLING NOTES:	
1	PROVIDE INSTALL A COMPLETE PATHWAY
2	CABLING TO BE INSTALLED VIA EMT CONDUIT TO DATA RACK. PROVIDE ALL EXTENSIONS, SUPPORTS, SLEEVES, BUSHING, ETC AS REQUIRED.
3	6 OUTLET, RACK MOUNTED PLUGSTRIP FOR CONNECTION OF EQUIPMENT. PROVIDE DEDICATED CIRCUIT FROM NEAREST PANEL WITH CAPACITY.
4	EXISTING INCOMING SINGLE MODE CORNING SMF 28E FIBRE CABLING BY TERRASPACE - CONFIRM IF EXISTING CABLE IS SUITABLE WITH CONTRACT ADMINISTRATOR.
5	PROVIDE A MINIMUM 25mm CONDUIT AND 12 STRAND OM3 50/125 MICRON MULTIMODE 10 Gb RISER CABLE, INCLUDE ALL LC ADAPTERS, CONNECTORS AND TERMINATIONS.
6	EXISTING DEMARCATION LOCATION IN TELEPHONE ROOM
7	SWITCH-SUPPLIED BY THE CITY.
8	FIBRE PATCH PANEL, 24 PORT BELDEN FIBRE EXPRESS OR APPROVED EQUAL. INSTALL IN DATA RACK C/W 1U HORIZONTAL CABLE MANAGEMENT.
9	PROVIDE 8 LC DUPLEX-LC DUPLEX FIBRE PATCH CABLES(3m/10ft).
10	LABEL PORTS AT BOTH ENDS.
11	EXISTING FIBRE CONNECTIONS TO 1539 WAVERLY AND 700 ASSINIBOINE PARK TO REMAIN ACTIVE THROUGHOUT PROJECT.
12	EXISTING BACK UP NETWORK TO REMAIN ACTIVE THROUGHOUT PROJECT.
13	WALL MOUNTED CABINET TO BE BELDEN XWM-2320-GD C/W FANS AND CABLE MANAGEMENT AS INDICATED.



No.	REVISION/DESCRIPTION	BY	DATE
5	ISSUED FOR ADDENDUM #1	KO	23.06.14
4	ISSUED FOR TENDER AND CONSTRUCTION	KO	04.06.14
3	ISSUED FOR FINAL REVIEW	KO	17.04.14
2	ISSUED FOR REVIEW	KO	20.02.14
1	ISSUED FOR REVIEW	KO	12.11.13

SEAL

DRAWN	CHECKED	DESIGNED	APPROVED
KOLO	DH	KO	KO

DATE: 2013.09.20  
 USER APPROVAL

THE CITY OF WINNIPEG  
 PLANNING, PROPERTY AND  
 DEVELOPMENT DEPARTMENT  
 MUNICIPAL ACCOMMODATIONS DIVISION  
 3-65 GARRY STREET, R3C 4K4

PROJECT  
 PAN AM POOL  
 NETWORK INFRASTRUCTURE UPGRADE  
 499-2014  
 25 POSEIDON BAY

SHEET TITLE  
 SCHEMATICS AND ELEVATIONS

SCALE	PROJECT No:	SHEET No:
AS SHOWN	2013-034	E5