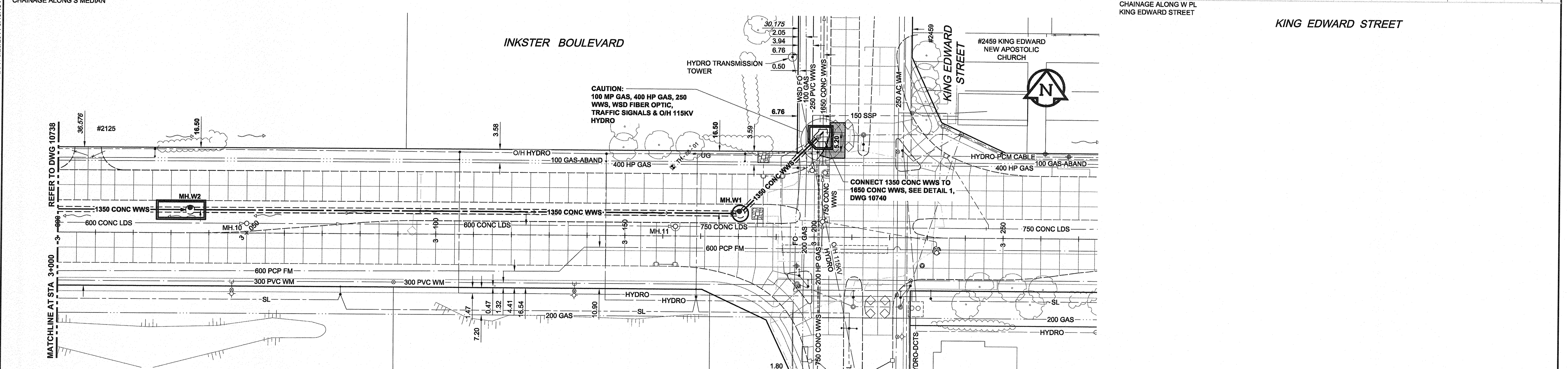
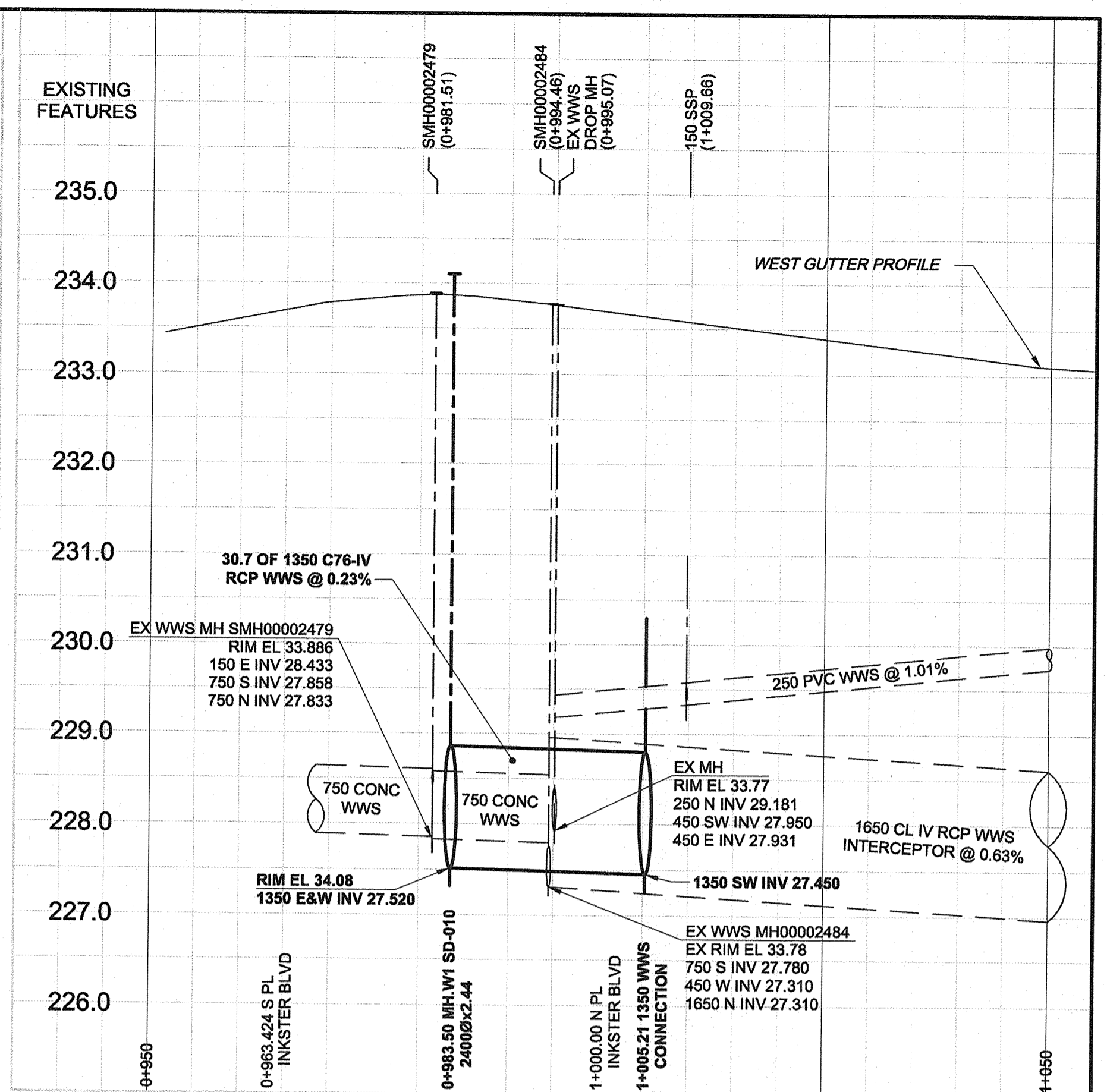
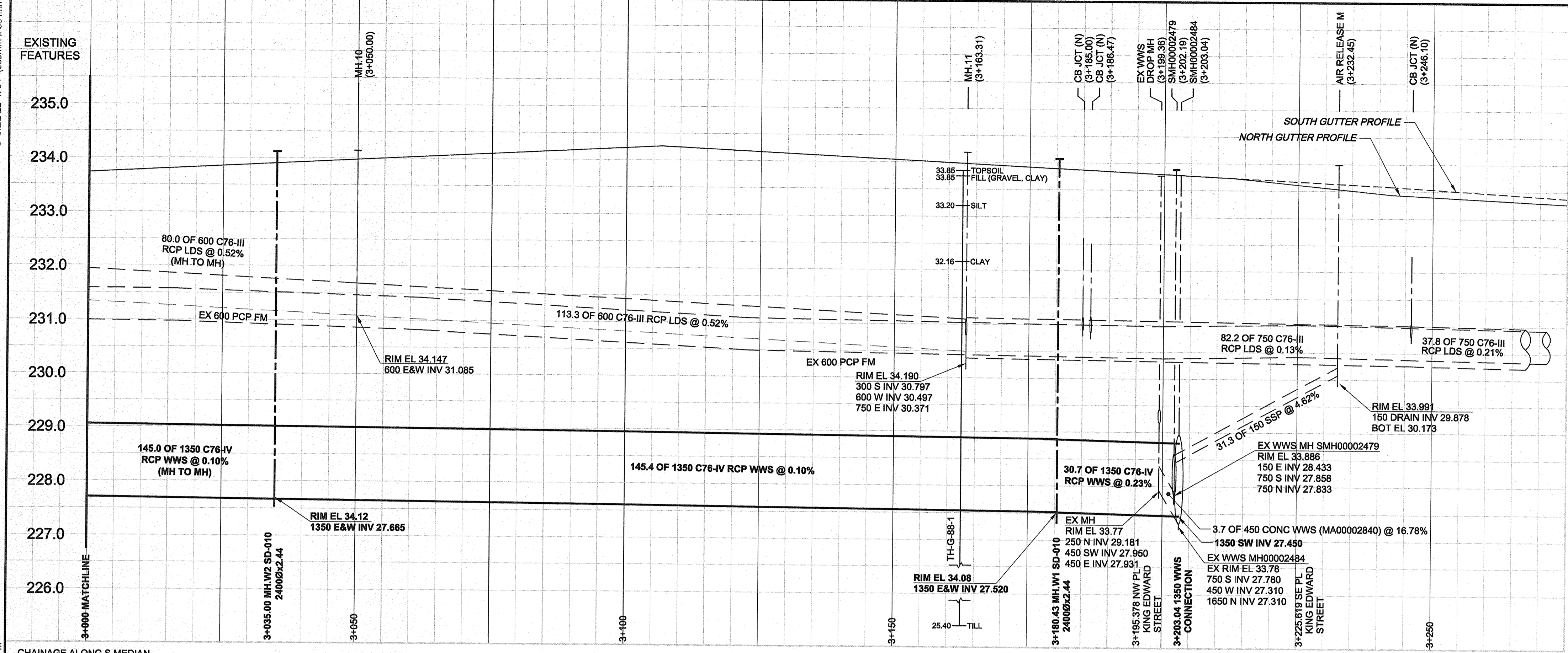


D SIZE 22" x 34" (569mm x 864mm)  
 PLOT: 0/25/2014 3:46:45 PM  
 AECOM FILE NAME: 60223051\_01-C-1007-OPT2\_RX.dwg Saved By: detroude/nw  
 AECOM REVIEW DRAFT CHK



**WARNING**  
 IF POWER EQUIPMENT OR EXPLOSIVES ARE TO BE USED FOR EXCAVATION ON THIS PROJECT, THE CONTRACTOR MUST:  
 1) NOTIFY THE GAS COMPANY OF THE PROPOSED LOCATION OF EXCAVATION.  
 2) TAKE PRECAUTION TO AVOID DAMAGE TO GAS COMPANY INSTALLATIONS.  
 SEE PROVINCIAL REGULATION 140/92 FOR DETAILS

EXISTING	LEGEND - PLAN	NEW	EXISTING	LEGEND - PLAN	NEW	EXISTING	LEGEND - PROFILE	NEW
150 WM	WATERMAIN	150 WM	○	CURB STOP	○	150 WM	WATERMAIN	150 WM
○	HYDRANT	○	○	REDUCER	○	○	HYDRANT	○
○	VALVE	○	○	COUPLING	○	○	VALVE	○
300 LDS	LAND DRAINAGE SEWER	300 LDS	○	ANODE	○	300 LDS	LAND DRAINAGE SEWER	300 LDS
250 WWS	WASTE WATER SEWER	250 WWS	○	HYDRO	○	250 WWS	WASTE WATER SEWER	250 WWS
○	MANHOLE	○	○	MTS	○	○	PAVEMENT CROWN	○
○	CATCH BASIN	○	○	GAS	○	○	N/W PROPERTY LINE	○
○	CURB INLET	○	○	TESTHOLE	○	○	S/E PROPERTY LINE	○
○	CULVERT	○	○	LAMP STANDARD	○	○	N/W GUTTER	○
○	PIPE ABANDONMENTS	○	○	TREE	○	○	S/E GUTTER	○
○	SURVEY BAR	○						

**LOCATION APPROVED UNDERGROUND STRUCTURES**  
 SUPR. U/G STRUCTURES COMMITTEE DATE  
 NOTE: LOCATION OF UNDERGROUND STRUCTURES AS SHOWN ARE BASED ON THE BEST INFORMATION AVAILABLE. BUT NO GUARANTEE IS GIVEN THAT ALL EXISTING UTILITIES ARE SHOWN OR THAT THE GIVEN LOCATIONS ARE EXACT. CONFIRMATION OF EXISTENCE AND EXACT LOCATION OF ALL SERVICES MUST BE OBTAINED FROM THE INDIVIDUAL UTILITIES BEFORE PROCEEDING WITH CONSTRUCTION.

NO.	ISSUED FOR TENDER	14/08/25	WJd
0	ISSUED FOR TENDER	14/08/25	WJd
	REVISIONS	YYMMDD	BY

**METRIC**  
 WHOLE NUMBERS INDICATE MILLIMETRES  
 DECIMALIZED NUMBERS INDICATE METRES

**AECOM**

DESIGNED BY: FMI  
 CHECKED BY: [Signature]  
 DRAWN BY: KMB  
 APPROVED BY: [Signature]  
 HOR. SCALE: 1:500  
 VERT. SCALE: 1:50  
 RELEASED FOR CONSTRUCTION: [Signature]  
 DATE: June 20, 2014

**AECOM**  
 Certificate of Authorization  
 AECOM Canada Ltd.  
 No. 4671 Date: June 20, 2014

PROFESSIONAL'S SEAL  
 PROVINCE OF MANITOBA  
 REGISTERED PROFESSIONAL ENGINEER  
 SA NAGY  
 June 26, 2014  
 CONSULTANT DRAWING NO.  
 60223051\_01-C-1007\_RX.dwg

**THE CITY OF WINNIPEG**  
 WATER AND WASTE DEPARTMENT

**NORTH-WEST INTERCEPTOR SEWER**

INKSTER BOULEVARD  
 223m E OF GROVERDALE AVENUE  
 TO KING EDWARD STREET

BID OPPORTUNITY NO. 481-2014

SHEET 7 OF 8  
 CITY DRAWING NUMBER  
 10739

REV 0