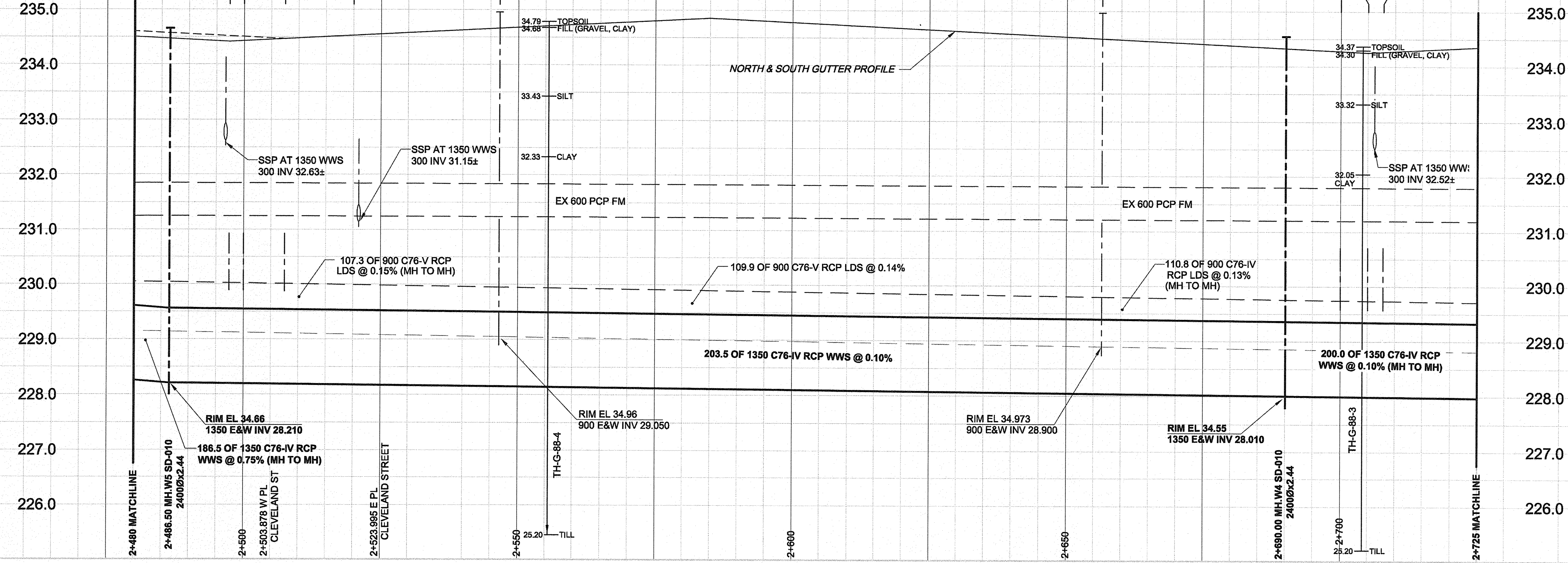


D SIZE 22" x 34" (560mm x 864mm)

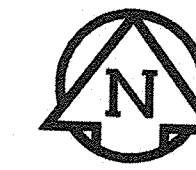
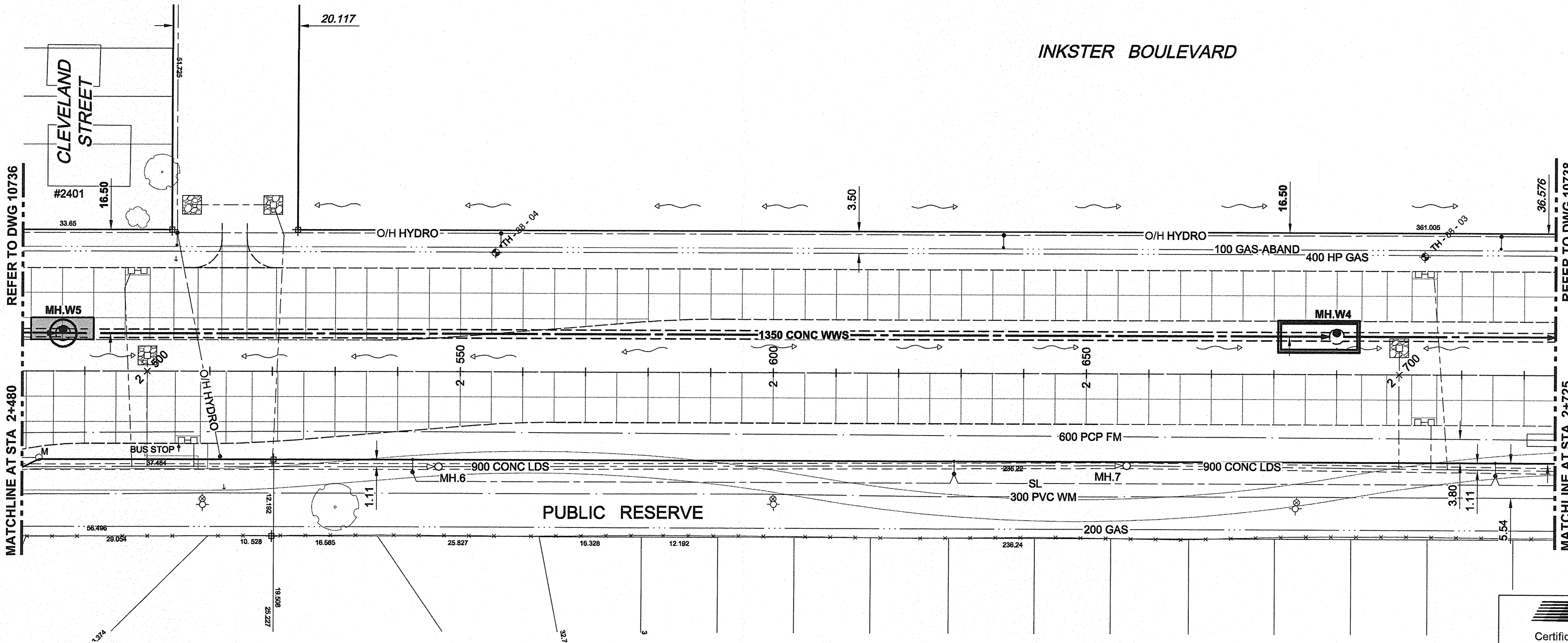
PLOT: 6/25/2014 3:43:18 PM

AECOM REVIEW DRFT CHK  
AECOM FILE NAME: 60223051\_01-C-1005\_RX.dwg Saved By:

EXISTING FEATURES



CHAINAGE ALONG S MEDIAN



**WARNING**  
 IF POWER EQUIPMENT OR EXPLOSIVES ARE TO BE USED FOR EXCAVATION ON THIS PROJECT, THE CONTRACTOR MUST:  
 1) NOTIFY THE GAS COMPANY OF THE PROPOSED LOCATION OF EXCAVATION.  
 2) TAKE PRECAUTION TO AVOID DAMAGE TO GAS COMPANY INSTALLATIONS.  
 SEE PROVINCIAL REGULATION 140/92 FOR DETAILS.

**METRIC**  
 WHOLE NUMBERS INDICATE MILLIMETRES  
 DECIMALIZED NUMBERS INDICATE METRES

**AECOM**  
 Certificate of Authorization  
 AECOM Canada Ltd.  
 No. 4671 Date: June 20, 2014

BID OPPORTUNITY NO. 481-2014

150 WM	WATERMAIN	150 WM	150 WM	CURB STOP	150 WM	WATERMAIN	150 WM
300 LDS	LAND DRAINAGE SEWER	300 LDS	300 LDS	REDUCER	300 LDS	HYDRANT	300 LDS
250 WWS	WASTE WATER SEWER	250 WWS	250 WWS	COUPLING	250 WWS	VALVE	250 WWS
○	MANHOLE	●	●	ANODE	○	LAND DRAINAGE SEWER	○
□	CATCH BASIN	■	■	HYDRO	△	WASTE WATER SEWER	△
△	CURB INLET	▲	▲	MTS	○	MANHOLE	○
▭	CULVERT	▭	▭	GAS	□	CATCH BASIN	□
⊕	PIPE ABANDONMENTS	⊕	⊕	TESTHOLE	△	CURB INLET	△
⊕	SURVEY BAR	⊕	⊕	LAMP STANDARD	▭	CULVERT	▭
⊕	EXISTING	⊕	⊕	TREE	⊕	PIPE ABANDONMENTS	⊕
○	LEGEND - PLAN	○	○	NEW	⊕	SURVEY BAR	⊕
○	LEGEND - PROFILE	○	○	NEW	⊕	EXISTING	⊕

**LOCATION APPROVED**  
 UNDERGROUND STRUCTURES  
 SUPR. U/G STRUCTURES DATE COMMITTEE  
 NOTE:  
 LOCATION OF UNDERGROUND STRUCTURES AS SHOWN ARE BASED ON THE BEST INFORMATION AVAILABLE. BUT NO GUARANTEE IS GIVEN THAT ALL EXISTING UTILITIES ARE SHOWN OR THAT THE GIVEN LOCATIONS ARE EXACT. CONFIRMATION OF EXISTENCE AND EXACT LOCATION OF ALL SERVICES MUST BE OBTAINED FROM THE INDIVIDUAL UTILITIES BEFORE PROCEEDING WITH CONSTRUCTION.

BM 16-023	S.W. Cor. Inkster Blvd. & Groverdale Ave.; Tbt. on top of 0.25 m sq. x 2.4 m iron tube 1.7 m N. of S.L. Inkster Blvd. & 5.9 m W. of W. curb line of Groverdale Ave.	ELEV 233.915 m
NO.	REVISIONS	DATE
0	ISSUED FOR TENDER	14/08/25 Wjd
NO.	REVISIONS	DATE

**AECOM**

DESIGNED BY	FMI	CHECKED BY	[Signature]
DRAWN BY	KMB	APPROVED BY	[Signature]
HOR. SCALE	1:500	RELEASED FOR CONSTRUCTION	[Signature]
VERT. SCALE	1:50	DATE	June 20, 2014

PROFESSIONAL'S SEAL  
 PROVINCE OF MANITOBA  
 REGISTERED PROFESSIONAL ENGINEER  
 A. NAGY  
 CONSULTANT DRAWING NO.  
 60223051\_01-C-1005\_RX.dwg

**THE CITY OF WINNIPEG**  
 WATER AND WASTE DEPARTMENT

**NORTH-WEST INTERCEPTOR SEWER**

INKSTER BOULEVARD  
 17m E OF BURROWS AVENUE  
 TO 31m W OF GROVERDALE AVENUE

SHEET 5 OF 8  
 CITY DRAWING NUMBER  
**10737**

REV 0