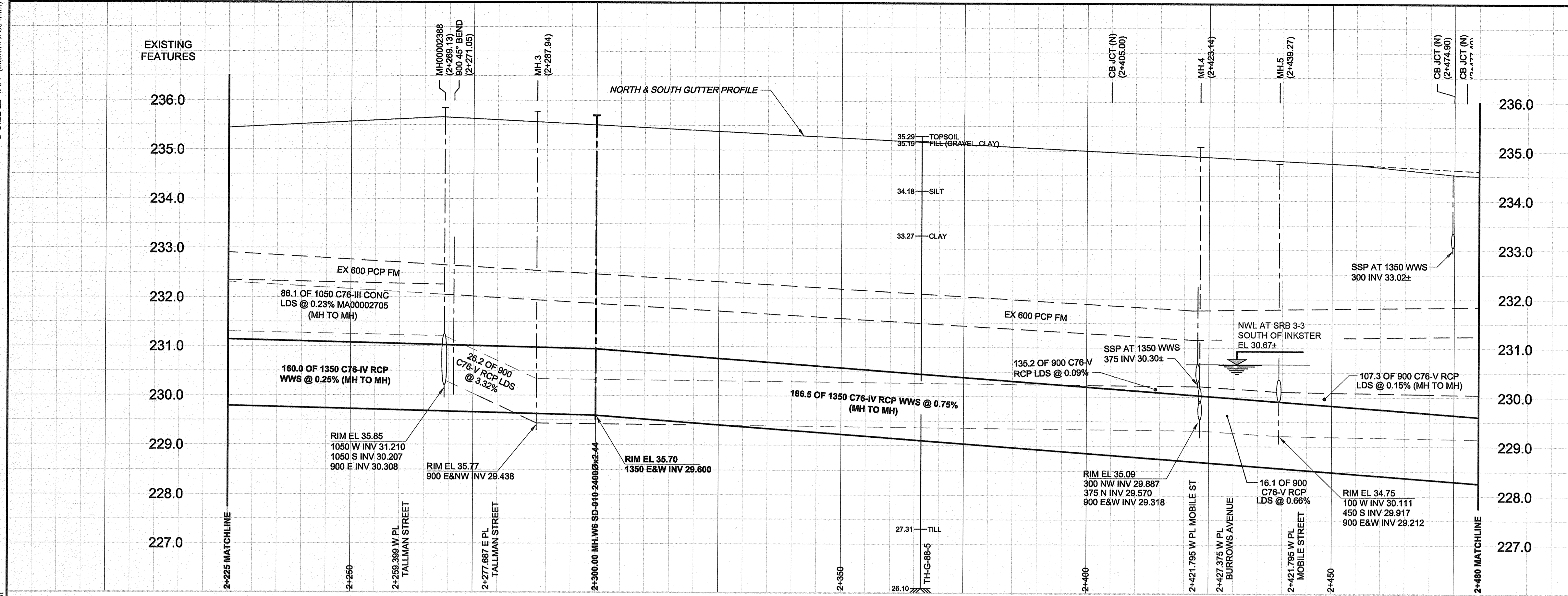


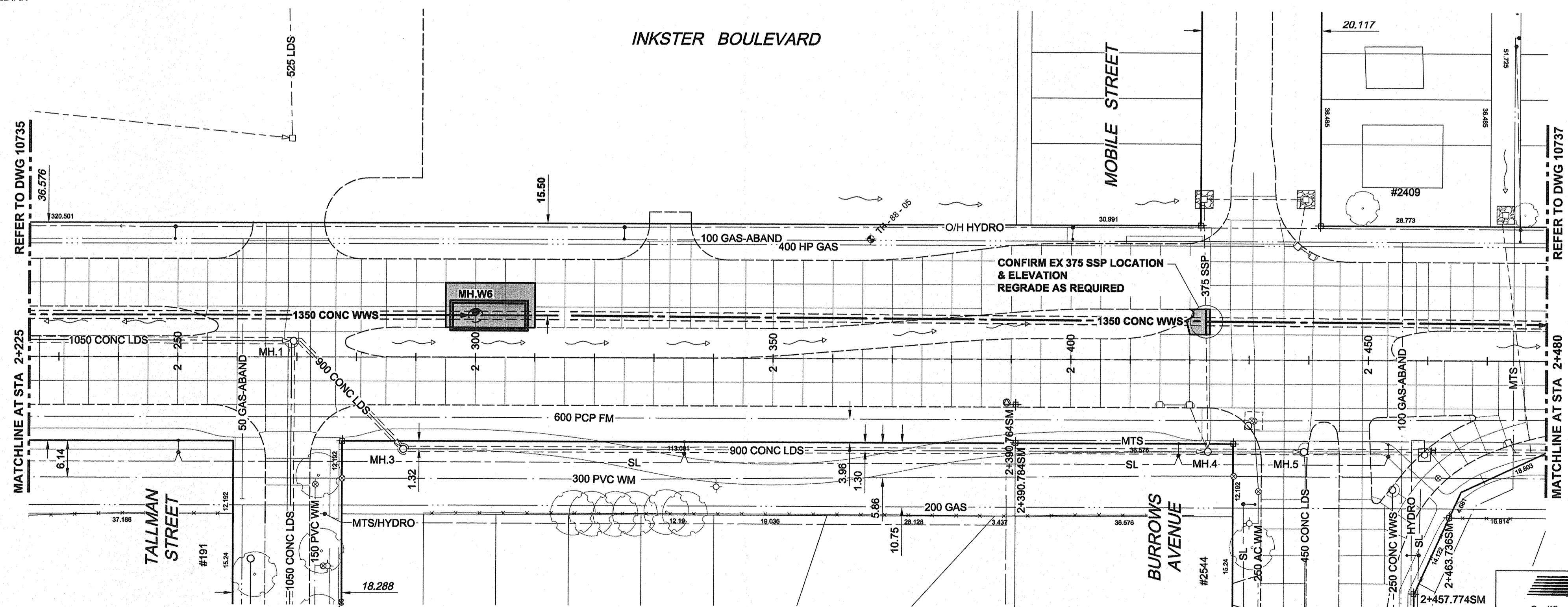
D SIZE 22" x 34" (559mm x 864mm)

PLOT: 6/25/2014 3:41:35 PM

AECOM REVIEW DRFT CHK LG



CHAINAGE ALONG S MEDIAN



WARNING
 IF POWER EQUIPMENT OR EXPLOSIVES ARE TO BE USED FOR EXCAVATION ON THIS PROJECT, THE CONTRACTOR MUST:
 1) NOTIFY THE GAS COMPANY OF THE PROPOSED LOCATION OF EXCAVATION.
 2) TAKE PRECAUTION TO AVOID DAMAGE TO GAS COMPANY INSTALLATIONS.
 SEE PROVINCIAL REGULATION 140/82 FOR DETAILS

METRIC
 WHOLE NUMBERS INDICATE MILLIMETRES
 DECIMALIZED NUMBERS INDICATE METRES

AECOM
 Certificate of Authorization
 AECOM Canada Ltd.
 No. 4671 Date: June 26, 2014

150 WM	WATERMAIN	150 WM	CURB STOP	150 WM	WATERMAIN	150 WM
Hydrant symbol	HYDRANT	Hydrant symbol	REDUCER	Hydrant symbol	HYDRANT	Hydrant symbol
Valve symbol	VALVE	Valve symbol	COUPLING	Valve symbol	VALVE	Valve symbol
300 LDS	LAND DRAINAGE SEWER	300 LDS	ANODE	300 LDS	LAND DRAINAGE SEWER	300 LDS
250 WWS	WASTE WATER SEWER	250 WWS	HYDRO	250 WWS	WASTE WATER SEWER	250 WWS
Manhole symbol	MANHOLE	Manhole symbol	MTS	Manhole symbol	MANHOLE	Manhole symbol
Catch basin symbol	CATCH BASIN	Catch basin symbol	GAS	Catch basin symbol	CATCH BASIN	Catch basin symbol
Curb inlet symbol	CURB INLET	Curb inlet symbol	TESTHOLE	Curb inlet symbol	CURB INLET	Curb inlet symbol
Culvert symbol	CULVERT	Culvert symbol	LAMP STANDARD	Culvert symbol	CULVERT	Culvert symbol
Survey bar symbol	PIPE ABANDONMENTS SURVEY BAR	Survey bar symbol	TREE	Survey bar symbol	PIPE ABANDONMENTS SURVEY BAR	Survey bar symbol
Existing symbol	EXISTING	New symbol	Existing symbol	Existing symbol	NEW	New symbol

LOCATION APPROVED UNDERGROUND STRUCTURES
 SUPR. U/G STRUCTURES DATE COMMITTEE
 NOTE: LOCATION OF UNDERGROUND STRUCTURES AS SHOWN ARE BASED ON THE BEST INFORMATION AVAILABLE. BUT NO GUARANTEE IS GIVEN THAT ALL EXISTING UTILITIES ARE SHOWN OR THAT THE GIVEN LOCATIONS ARE EXACT. CONFIRMATION OF EXISTENCE AND EXACT LOCATION OF ALL SERVICES MUST BE OBTAINED FROM THE INDIVIDUAL UTILITIES BEFORE PROCEEDING WITH CONSTRUCTION.

BM 16-004	S. side Inkster Blvd. W. of Burrows Ave., brass plug in 7.8 m Conc. pile 14.7 m S. of C.L. asphalt Pavt. on Inkster Blvd. & 60.8 m W. of W. wall No. 2409 Inkster Blvd. or 38 m W. of W.L. of Burrows Ave. & 8 m N. of S.L. of Inkster Blvd.
ELEV 235.054 m	
0	ISSUED FOR TENDER 14/08/25 WJD
NO.	REVISIONS YYMMDD BY

AECOM	
DESIGNED BY	FMI
DRAWN BY	KMB
HOR. SCALE	1:500
VERT. SCALE	1:50
DATE	JUN 25 2014
CHECKED BY	[Signature]
APPROVED BY	[Signature]
RELEASED FOR CONSTRUCTION	[Signature]
DATE	JUN 25 2014

PROFESSIONAL'S SEAL
 PROVINCE OF MANITOBA
 REGISTERED PROFESSIONAL ENGINEER
 A. NAGY
 June 26, 2014
 CONSULTANT DRAWING NO.
 60223051_01-C-1004_RX.dwg

BID OPPORTUNITY NO. 481-2014

THE CITY OF WINNIPEG WATER AND WASTE DEPARTMENT

NORTH-WEST INTERCEPTOR SEWER

INKSTER BOULEVARD
 187m E OF INKSBROOK DRIVE
 TO 29m W OF CLEVELAND STREET

SHEET 4 OF 8
 CITY DRAWING NUMBER 10736
 REV 0