

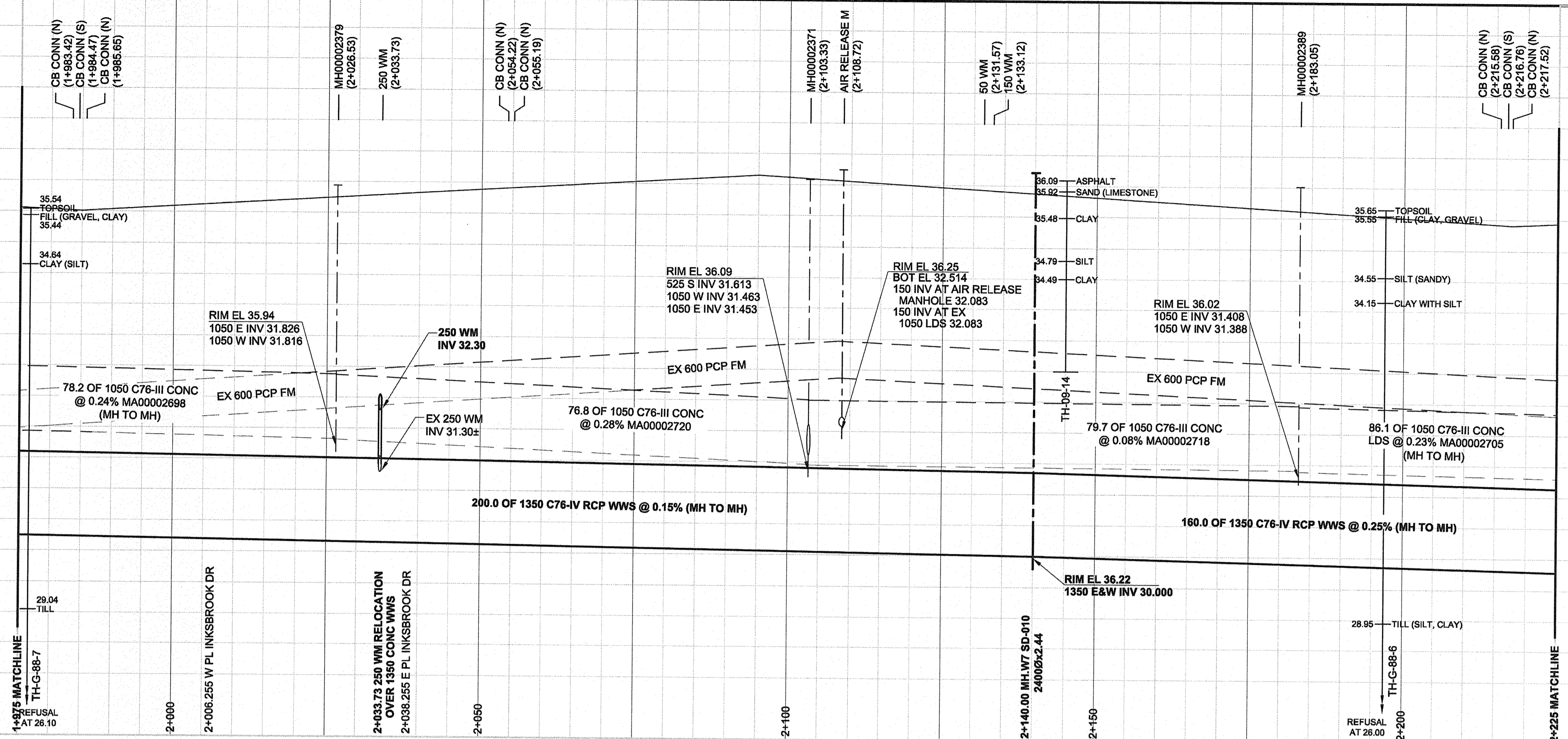
D SIZE 22" x 34" (559mm x 864mm)

PL.OT: 6/25/2014 3:40:02 PM

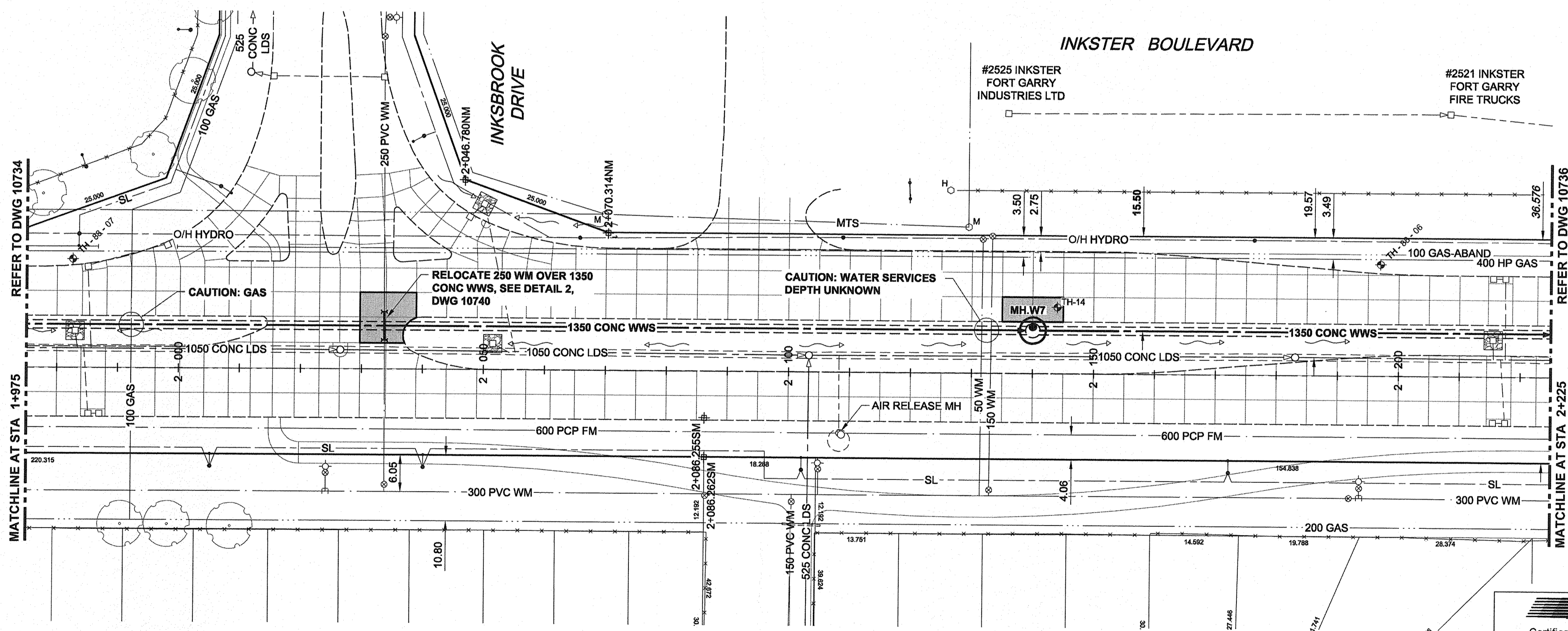
AECOM REVIEW DRAFT CHK

EXISTING FEATURES
237.0
236.0
235.0
234.0
233.0
232.0
231.0
230.0
229.0
228.0

237.0
236.0
235.0
234.0
233.0
232.0
231.0
230.0
229.0
228.0



CHAINAGE ALONG S MEDIAN



WARNING
IF POWER EQUIPMENT OR EXPLOSIVES ARE TO BE USED FOR EXCAVATION ON THIS PROJECT, THE CONTRACTOR MUST:
1) NOTIFY THE GAS COMPANY OF THE PROPOSED LOCATION OF EXCAVATION
2) TAKE PRECAUTION TO AVOID DAMAGE TO GAS COMPANY INSTALLATIONS.
SEE PROVINCIAL REGULATION 140/92 FOR DETAILS

METRIC
WHOLE NUMBERS INDICATE MILLIMETRES
DECIMALIZED NUMBERS INDICATE METRES

AECOM
Certificate of Authorization
AECOM Canada Ltd.
No. 4671 Date: June 26, 2014

150 WM	WATERMAIN	150 WM	♂	CURB STOP	150 WM	WATERMAIN	150 WM
Hydrant	Hydrant	Reducer	♂	Reducer	Hydrant	Hydrant	Reducer
Valve	Valve	Coupling	♂	Coupling	Valve	Valve	Coupling
300 LDS	LAND DRAINAGE SEWER	300 LDS	♂	ANODE	300 LDS	LAND DRAINAGE SEWER	300 LDS
250 WWS	WASTE WATER SEWER	250 WWS	♂	HYDRO	250 WWS	WASTE WATER SEWER	250 WWS
Manhole	Manhole	MTS	♂	MTS	Manhole	Manhole	MTS
Catch Basin	Catch Basin	Gas	♂	Gas	Catch Basin	Catch Basin	Gas
Curb Inlet	Curb Inlet	Testhole	♂	Testhole	Curb Inlet	Curb Inlet	Testhole
Culvert	Culvert	Lamp Standard	♂	Lamp Standard	Culvert	Culvert	Lamp Standard
Pipe Abandonments	Pipe Abandonments	Tree	♂	Tree	Pipe Abandonments	Pipe Abandonments	Tree
Survey Bar	Survey Bar				Survey Bar	Survey Bar	
EXISTING	LEGEND - PLAN	NEW	EXISTING	LEGEND - PLAN	NEW	EXISTING	LEGEND - PROFILE

LOCATION APPROVED UNDERGROUND STRUCTURES
SUPR. U/G STRUCTURES DATE COMMITTEE
NOTE: LOCATION OF UNDERGROUND STRUCTURES AS SHOWN ARE BASED ON THE BEST INFORMATION AVAILABLE. BUT NO GUARANTEE IS GIVEN THAT ALL EXISTING UTILITIES ARE SHOWN OR THAT THE GIVEN LOCATIONS ARE EXACT. CONFIRMATION OF EXISTENCE AND EXACT LOCATION OF ALL SERVICES MUST BE OBTAINED FROM THE INDIVIDUAL UTILITIES BEFORE PROCEEDING WITH CONSTRUCTION.

BM 16.004	S. side Inkster Blvd. W of Burrows Ave., brass plug in 7.6 m Conc. pile 14.7 m S. of C.L. asphalt Pavt. on Inkster Blvd. & ELEV 235.054 m	14/08/25	WJd
BM 00.0	60.0 m W. of W. wall No. 2460 Inksbrook Blvd. or 38 m W. of W.L. of Burrows Ave. & 8 m N. of S.L. of Inkster Blvd.		
NO.	REVISIONS	DATE	BY

AECOM

DESIGNED BY	FMI	CHECKED BY	[Signature]
DRAWN BY	KMB	APPROVED BY	[Signature]
HOR. SCALE	1:500	RELEASED FOR CONSTRUCTION	[Signature]
VERT. SCALE	1:50	DATE	June 25/14

PROFESSIONAL'S SEAL
PROVINCE OF MANITOBA
A. MAGY
June 26, 2014
REGISTERED PROFESSIONAL ENGINEER

THE CITY OF WINNIPEG
WATER AND WASTE DEPARTMENT

NORTH-WEST INTERCEPTOR SEWER

INKSTER BOULEVARD
368m E OF BROOKSIDE BOULEVARD
TO 34m W OF TALLMAN STREET

SHEET 3 OF 8
CITY DRAWING NUMBER 10735
REV 0

BID OPPORTUNITY NO. 481-2014