

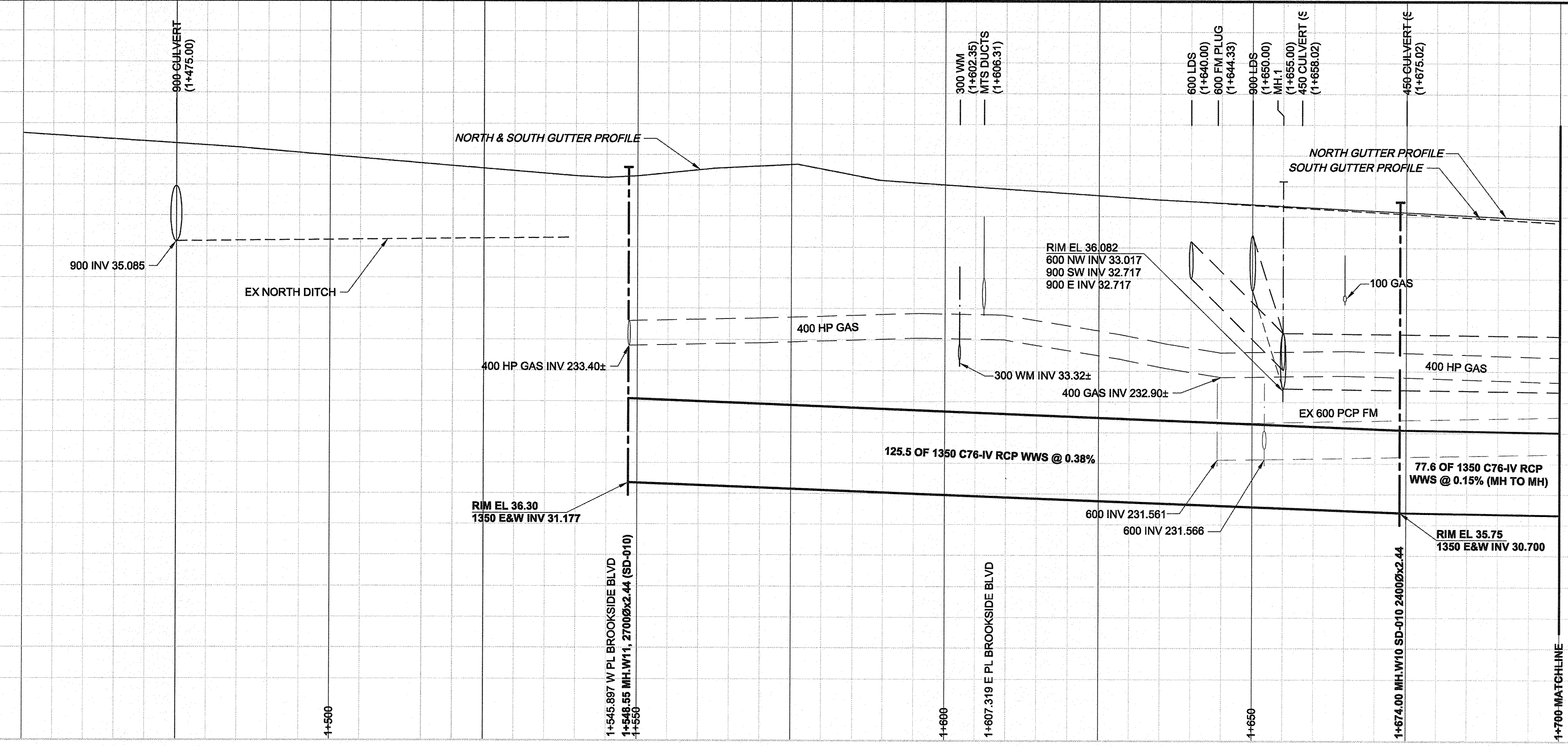
D SIZE 22" x 34" (569mm x 864mm)

PLOT: 6/25/2014 3:36:35 PM

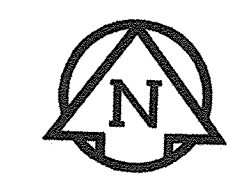
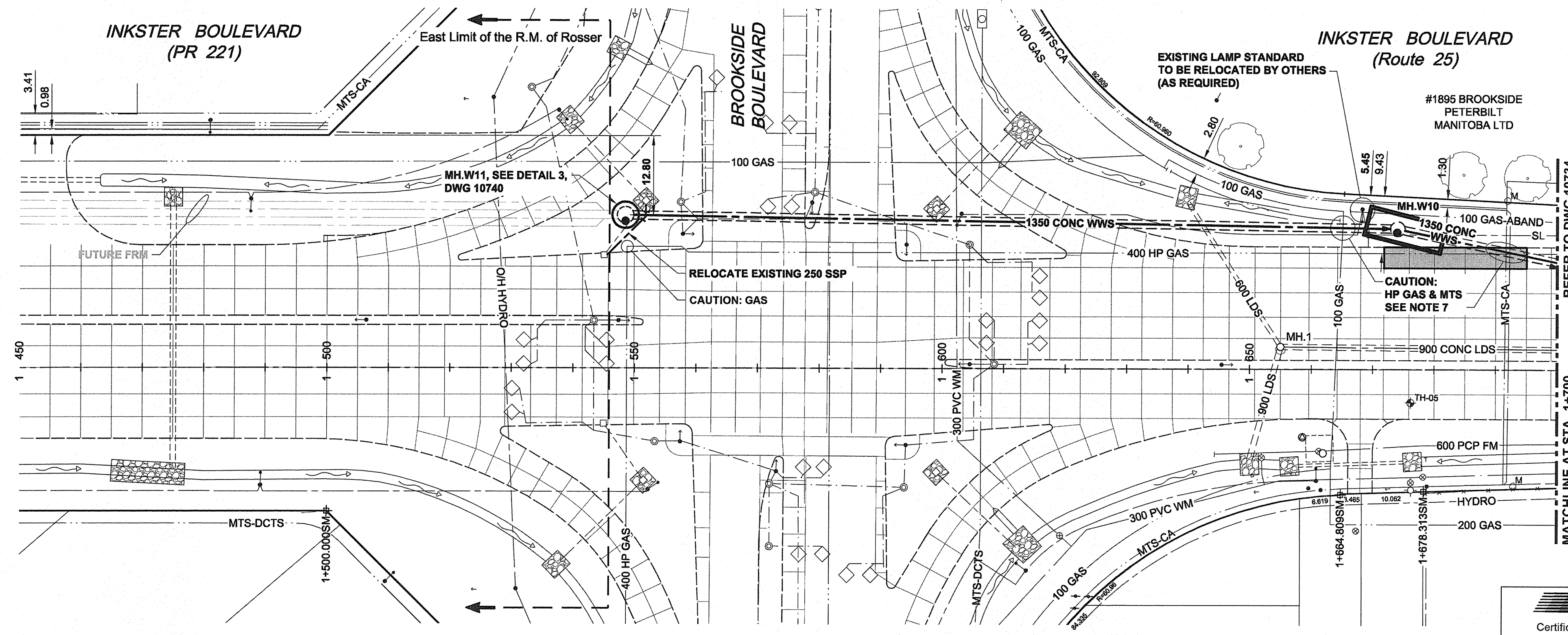
AECOM REVIEW DRFT CHK
AECOM FILE NAME: 60223051_01-C-1001_RX.dwg Saved By:

EXISTING FEATURES
237.0
236.0
235.0
234.0
233.0
232.0
231.0
230.0
229.0
228.0

237.0
236.0
235.0
234.0
233.0
232.0
231.0
230.0
229.0
228.0



CHAINAGE ALONG S MEDIAN



- CONSTRUCTION NOTES:**
- SEE SPECIFICATION FOR DETAILED TEST HOLE INFORMATION.
 - LOCATION OF SERVICES SHOWN ON DRAWINGS ARE APPROXIMATE. LOCATION OF ALL UTILITIES AND SERVICES TO BE CONFIRMED ON SITE.
 - NOTIFY ALL AFFECTED RESIDENTS AND BUSINESSES 24 HOURS IN ADVANCE OF ANY SHUT DOWN OR DISRUPTION OF SERVICE.
 - INSTALL 1350 WWS BY TRENCHLESS METHODS WITH NO INTERMEDIATE SHAFTS BETWEEN MANHOLES.
 - SHAFTS IN OR WITHIN 1 METRE OF PAVEMENT TO BE BACKFILLED WITH CLASS 1 BACKFILL. REMAINDER OF SHAFTS TO HAVE CLASS 3 BACKFILL.
 - SHAFTS LOCATIONS/ CONFIGURATIONS () AND PAVEMENT RESTORATIONS () SHOWN ON DRAWINGS ARE CONCEPTUAL.
 - DWGS 10733 - 10737: LOCATION AND ELEVATION OF 400 HP GAS AT 1350 WWS CROSSING EAST OF MH.W10 TO BE CONFIRMED PRIOR TO COMMENCING WORK BETWEEN MH.W5 AND MH.W11.
 - TRAFFIC MANAGEMENT PLAN AS PER TRAFFIC PLAN FIGURES 1-1 & 1-2 AS INCLUDED IN THE SPECIFICATIONS.

WARNING
IF POWER EQUIPMENT OR EXPLOSIVES ARE TO BE USED FOR EXCAVATION ON THIS PROJECT, THE CONTRACTOR MUST:
1) NOTIFY THE GAS COMPANY OF THE PROPOSED LOCATION OF EXCAVATION.
2) TAKE PRECAUTION TO AVOID DAMAGE TO GAS COMPANY INSTALLATIONS.
SEE PROVINCIAL REGULATION 140/82 FOR DETAILS

METRIC
WHOLE NUMBERS INDICATE MILLIMETRES
DECIMALIZED NUMBERS INDICATE METRES

APECN
Certificate of Authorization
AECOM Canada Ltd.
No. 4671 Date: June 26, 2014

BID OPPORTUNITY NO. 481-2014

150 WM	WATERMAIN	150 WM	150 WM	CURB STOP	150 WM	WATERMAIN	150 WM
+	HYDRANT	+	+	REDUCER	+	HYDRANT	+
o	VALVE	o	o	COUPLING	o	VALVE	o
300 LDS	LAND DRAINAGE SEWER	300 LDS	300 LDS	ANODE	300 LDS	LAND DRAINAGE SEWER	300 LDS
250 WWS	WASTE WATER SEWER	250 WWS	250 WWS	HYDRO	250 WWS	WASTE WATER SEWER	250 WWS
o	MANHOLE	o	o	MTS	o	MANHOLE	o
□	CATCH BASIN	□	□	GAS	□	CATCH BASIN	□
△	CURB INLET	△	△	TESTHOLE	△	CURB INLET	△
---	CULVERT	---	---	LAMP STANDARD	---	CULVERT	---
+	PIPE ABANDONMENTS	+	+	TREE	+	PIPE ABANDONMENTS	+
+	SURVEY BAR	+	+		+	SURVEY BAR	+
---	EXISTING	---	---	---	---	EXISTING	---
---	LEGEND - PLAN	---	---	---	---	LEGEND - PLAN	---
---	NEW	---	---	---	---	NEW	---
---	EXISTING	---	---	---	---	EXISTING	---
---	LEGEND - PROFILE	---	---	---	---	LEGEND - PROFILE	---
---	NEW	---	---	---	---	NEW	---

LOCATION APPROVED
UNDERGROUND STRUCTURES

SUPR. U/G STRUCTURES DATE COMMITTEE

NOTE:
LOCATION OF UNDERGROUND STRUCTURES AS SHOWN ARE BASED ON THE BEST INFORMATION AVAILABLE. BUT NO GUARANTEE IS GIVEN THAT ALL EXISTING UTILITIES ARE SHOWN OR THAT THE GIVEN LOCATIONS ARE EXACT. CONFIRMATION OF EXISTENCE AND EXACT LOCATION OF ALL SERVICES MUST BE OBTAINED FROM THE INDIVIDUAL UTILITIES BEFORE PROCEEDING WITH CONSTRUCTION.

BM 16-003	S.W. Cor. Inkster Blvd. & Ramsey St., brass plug in 7.6 m Conc. pile, 0.3 m N. of S.L. Inkster Blvd., 20 m W. of E.L. of Ramsey St.
ELEV 235.794m	
0	ISSUED FOR TENDER 14/08/25 Wjd
NO.	REVISIONS
	YYMMDD BY

AECOM

DESIGNED BY: FMI
DRAWN BY: KMB
HOR. SCALE: 1:500
VERT. SCALE: 1:50
DATE:

CHECKED BY: [Signature]
APPROVED BY: [Signature]
RELEASED FOR CONSTRUCTION: [Signature]
DATE: June 25/14

PROFESSIONAL'S SEAL
PROVINCE OF MANITOBA
REGISTERED PROFESSIONAL ENGINEER
A. NAGY
June 26, 2014
CONSULTANT DRAWING NO.
60223051_01-C-1001_RX.dwg

THE CITY OF WINNIPEG
WATER AND WASTE DEPARTMENT

NORTH-WEST INTERCEPTOR SEWER

INKSTER BOULEVARD
446m E OF ROY ROCHE DRIVE
TO 306m W OF INKSBROOK DRIVE

SHEET 1 OF 8
CITY DRAWING NUMBER
10733
REV 0