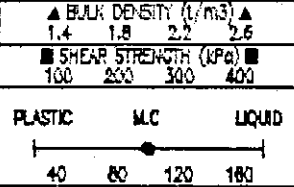
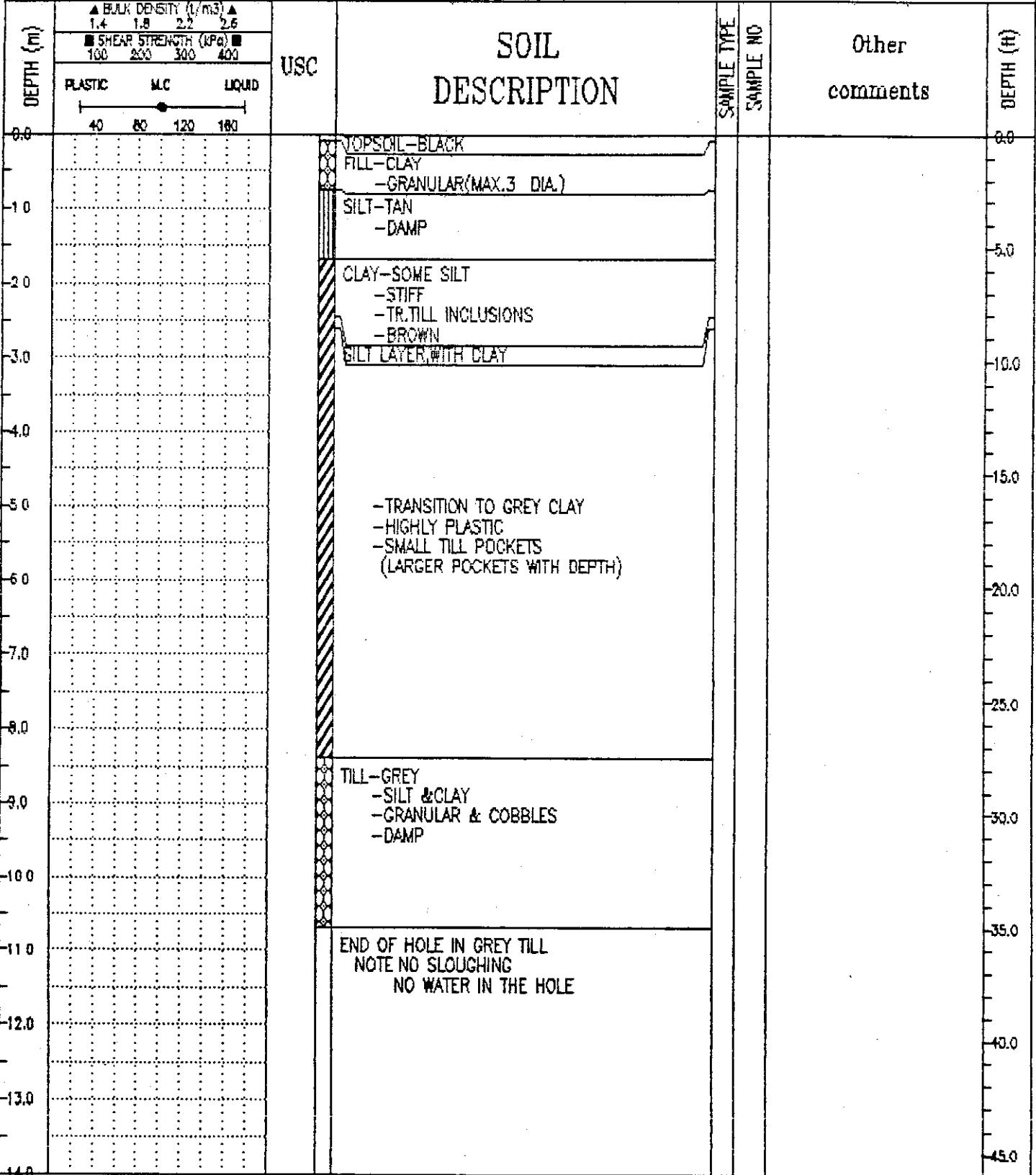


**Appendix B**  
**Test Hole Logs**

NORTH OF SASKATCHEWAN	SUBTERRANEAN LTD.	BOREHOLE No. G-88-1
GENSTAR DEVELOPMENTS LTD.		Project No: 06-0898-266-01
PROJECT ENGINEER: TW		ELEVATION 235.840 (m)

SAMPLE TYPE  GRAB SAMPLE  SHELEY TUBE  DISTURBED  NO RECOVERY  CORE BARREL  WIRELOG-TYPE



<b>UMA Engineering Ltd.</b> Winnipeg, Manitoba	COMPLETION DEPTH * * m	COMPLETE
	LOGGED BY TH	DWG NO.

NORTH OF SASKATCHEWAN	SUBTERRANEAN LTD.	BOREHOLE No. G-88-2
GENSTAR DEVELOPMENTS LTD.		Project No: 08 -0898-200-01
PROJECT ENGINEER: TW		ELEVATION 234.250 (m)

SAMPLE TYPE  GRAB SAMPLE  SEELEY TUBE  DISTURBED  NO RECOVERY  CORE BARREL  WIRELINE-TYPE

DEPTH (m)	USC	SOIL DESCRIPTION	SAMPLE TYPE	SAMPLE NO	Other comments	DEPTH (ft)
0.0		TOPSOIL				0.0
		FILL-GRANULAR & CLAY -GRANULAR (3 DIA.)				
-1.0						
		CLAY-WITH SILT				5.0
-2.0		-STIFF				
		-BROWN				
-3.0		-TR. TILL INCLUSIONS				10.0
-4.0						
		-TRANSITION TO GREY CLAY				15.0
-5.0		-TILL INCLUSIONS (SMALL SAND & GRAVEL POCKETS)				
-6.0						20.0
-7.0						
-8.0						25.0
-9.0						
-10.0						30.0
-11.0		TILL-GREY				35.0
		-WITH SILT & CLAY				
		-WITH GRANULAR & COBBLES				
		-WET (PAT TEST)				
		END OF HOLE IN GREY TILL @ 11.28				40.0
		NOTE: NO SLOUGHING				
		NO WATER IN HOLE				45.0
-12.0						
-13.0						
-14.0						

UMA Engineering Ltd.  
Winnipeg, Manitoba

COMPLETION DEPTH ** m	COMPLETE	LOGGED BY TH	DWG NO.
			Page 1 of 1

NORTH OF SASKATCHEWAN		SUBTERRANEAN LTD.		BOREHOLE No. G-88-3	
GENSTAR DEVELOPMENTS LTD.				Project No: 08-0898-266-01	
PROJECT ENGINEER: TW				ELEVATION 234.870 (m)	
SAMPLE TYPE <input checked="" type="checkbox"/> GRAB SAMPLE		<input checked="" type="checkbox"/> SHELBY TUBE		<input checked="" type="checkbox"/> UNSTURBED	
		<input type="checkbox"/> NO RECOVERY		<input type="checkbox"/> CORE BARREL	
				<input type="checkbox"/> WIRELINE-TYPE	

DEPTH (m)	USC	SOIL DESCRIPTION	SAMPLE TYPE	SAMPLE NO	Other comments	DEPTH (#)
0.0		TOPSOIL FILL-CLAY & GRANULAR -GRANULAR TO 3 DIA.				0.0
1.0		SILT-TAN -WET TO PAT TEST				5.0
2.0		CLAY-WITH SILT -STIFF -BROWN -TR. TILL INCLUSIONS				10.0
3.0		-TRANSITION TO GREY CLAY -HIGHLY PLASTIC -TILL INCLUSIONS				15.0
4.0						20.0
5.0						25.0
6.0						30.0
7.0						35.0
8.0						40.0
9.0						45.0
10.0		TILL-SILT WITH CLAY -GREY -WITH GRANULAR & COBBLES -VERY DENSE (DIFFICULT TO DRILL) -DRY TO DAMP				
11.0						
12.0		AUGER REFUSAL @ 10.98 NOTE:NO SLOUGHING WATER ON TIP OF AUGER @ REFUSAL				
13.0						
14.0						

<b>UMA Engineering Ltd.</b> Winnipeg, Manitoba		COMPLETION DEPTH ** m	COMPLETE
		LOGGED BY TH	DWG NO.

Page 1 of 1

NORTH OF SASKATCHEWAN SUBTERRANEAN LTD. BOREHOLE No. G-88-4

GENSTAR DEVELOPMENTS LTD. Project No: 06-0096-266-01

PROJECT ENGINEER: TW ELEVATION 234.750 (m)

SAMPLE TYPE  GEAR SAMPLE  SHELLY TUBE  DISTURBED  NO RECOVERY  CORE BARREL  WIPELINE-TYPE

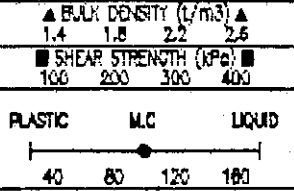
DEPTH (m)	▲ BULK DENSITY (t/m <sup>3</sup> ) ▲ 1.4 1.8 2.2 2.6			USC	SOIL DESCRIPTION	SAMPLE TYPE	SAMPLE NO	Other comments	DEPTH (ft)
	■ SHEAR STRENGTH (kPa): ■ 100 200 300 400								
	PLASTIC	M.C	LIQUID						
	40	50	120	180					
0.6					STOPSOIL				0.6
					CLAY-FILL BROWN				
					GRANULAR-FILL				
					-MAX. 3 DIA				
1.0					CLAY-BROWN				1.0
					-STIFF				
2.0					SILT-TAN				2.0
					-DAMP				
3.0					CLAY-WITH SILT				3.0
					-STIFF				
					-BROWN				
					-TR. TILL INCLUSIONS				
4.0									4.0
5.0									5.0
					-TRANSITION TO GREY CLAY				
					-SMALL TILL INCLUSIONS				
					(MORE WITH DEPTH)				
6.0									6.0
7.0									7.0
8.0									8.0
9.0									9.0
10.0					TILL-SILT WITH CLAY				10.0
					-GREY				
					-WITH GRANULAR & COBBLES				
					(MORE GRANULAR WITH DEPTH)				
11.0									11.0
12.0					AUGER REFUSAL @ 11.43				12.0
					NOTE: NO SLOUCHING				
					TRACE OF WATER IN THE TEST HOLE				
13.0									13.0
14.0									14.0

UMA Engineering Ltd.  
Winnipeg, Manitoba

COMPLETION DEPTH \*\* m COMPLETE  
LOGGED BY TH DWG NO. Page 1 of 1

NORTH OF SASKATCHEWAN	SUBTERRANEAN LTD.	BOREHOLE No. G-88-5
GENSTAR DEVELOPMENTS LTD.		Project No: 06-0888-266-01
PROJECT ENGINEER: TW		ELEVATION 235.260 (m)
SAMPLE TYPE <input checked="" type="checkbox"/> GRAB SAMPLE	<input checked="" type="checkbox"/> SHELBY TUBE	<input checked="" type="checkbox"/> DISTURBED
	<input type="checkbox"/> NO RECOVERY	<input type="checkbox"/> CORE BARREL
		<input type="checkbox"/> WIPELINE-TYPE

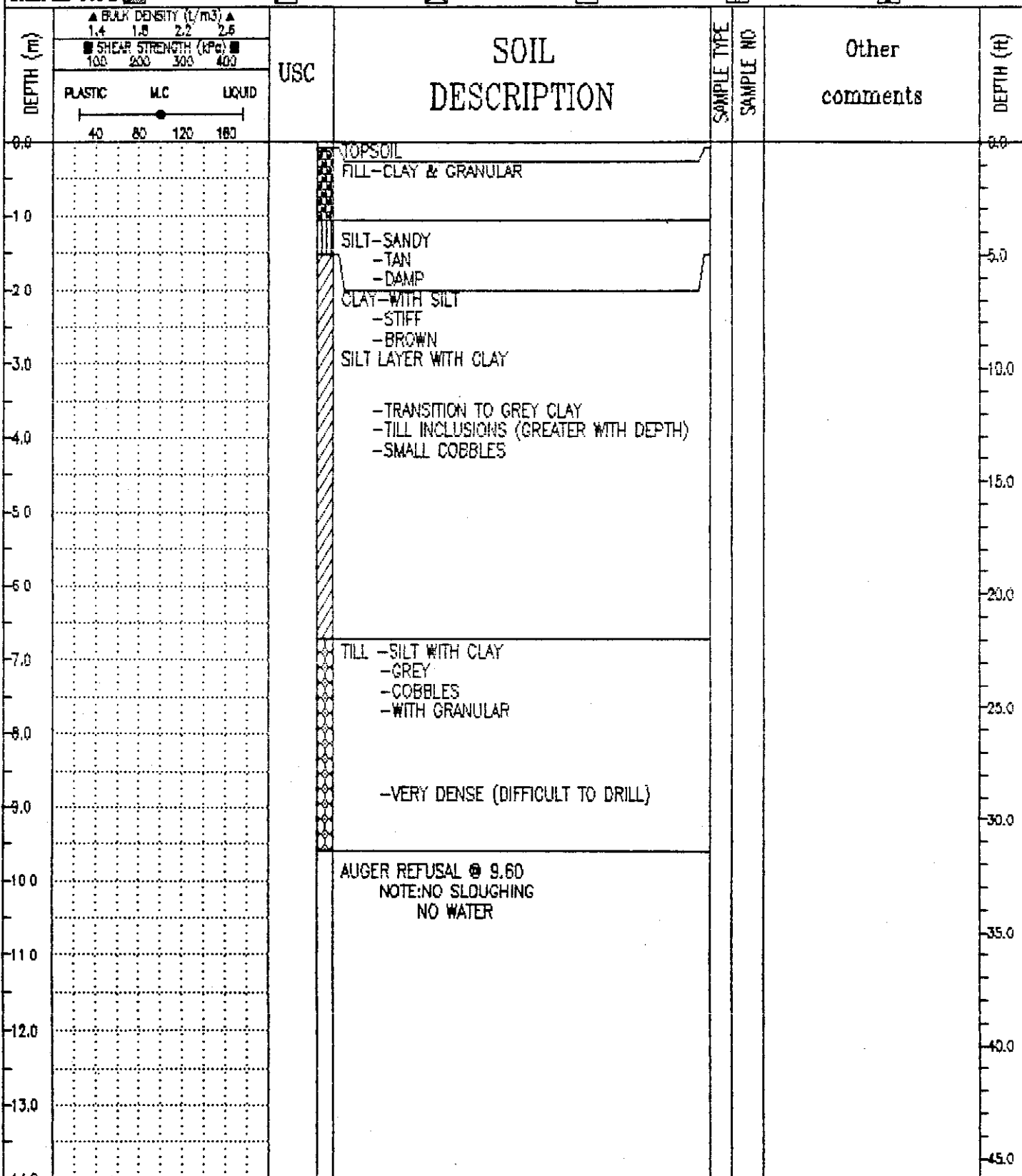
DEPTH (m)	USC	SOIL DESCRIPTION	SAMPLE TYPE	SAMPLE NO	Other comments	DEPTH (ft)
0.0		TOPSOIL				0.0
		FILL-WITH CLAY @ GRANULAR				
-1.0		SILT-TAN				-5.0
		-COARSE				
		-WET (TO PAT TEST)				
-2.0		CLAY-WITH SILT				-10.0
		-STIFF				
		-BROWN				
		-TR. TILL INCLUSIONS				
-3.0						
-4.0						
-5.0		-TRANSITION TO GREY CLAY				-15.0
		-TILL INCLUSIONS BECOMING LARGER WITH DEPTH				
		-COBBLES				
-6.0						-20.0
-7.0		-GRAVEL POCKET +/- .3				
-8.0						-25.0
-9.0		TILL-SILT WITH CLAY				-30.0
		-GREY				
		-WITH GRANULAR				
		-COBBLES & BOULDERS				
-10.0		AUGER REFUSAL @ 9.15				-35.0
		NOTE: NO SLOUGHING				
		TRACE OF WATER				
-11.0						-40.0
-12.0						-45.0
-13.0						
-14.0						



UMA Engineering Ltd.  
 Winnipeg, Manitoba

COMPLETION DEPTH ** m	COMPLETE
LOGGED BY TW	DWG NO.
	Page 1 of 1

NORTH OF SASKATCHEWAN	SUBTERRANEAN LTD.	BOREHOLE No. G-88-6
GENSTAR DEVELOPMENTS LTD.		Project No: 06 -0696-268-01
PROJECT ENGINEER: TW		ELEVATION 235.650 (m)
SAMPLE TYPE <input checked="" type="checkbox"/> GRAB SAMPLE	<input checked="" type="checkbox"/> SHELLY TUBE	<input checked="" type="checkbox"/> DISTURBED
	<input type="checkbox"/> NO RECOVERY	<input type="checkbox"/> CORE BARREL
		<input type="checkbox"/> WIRELINE-TYPE



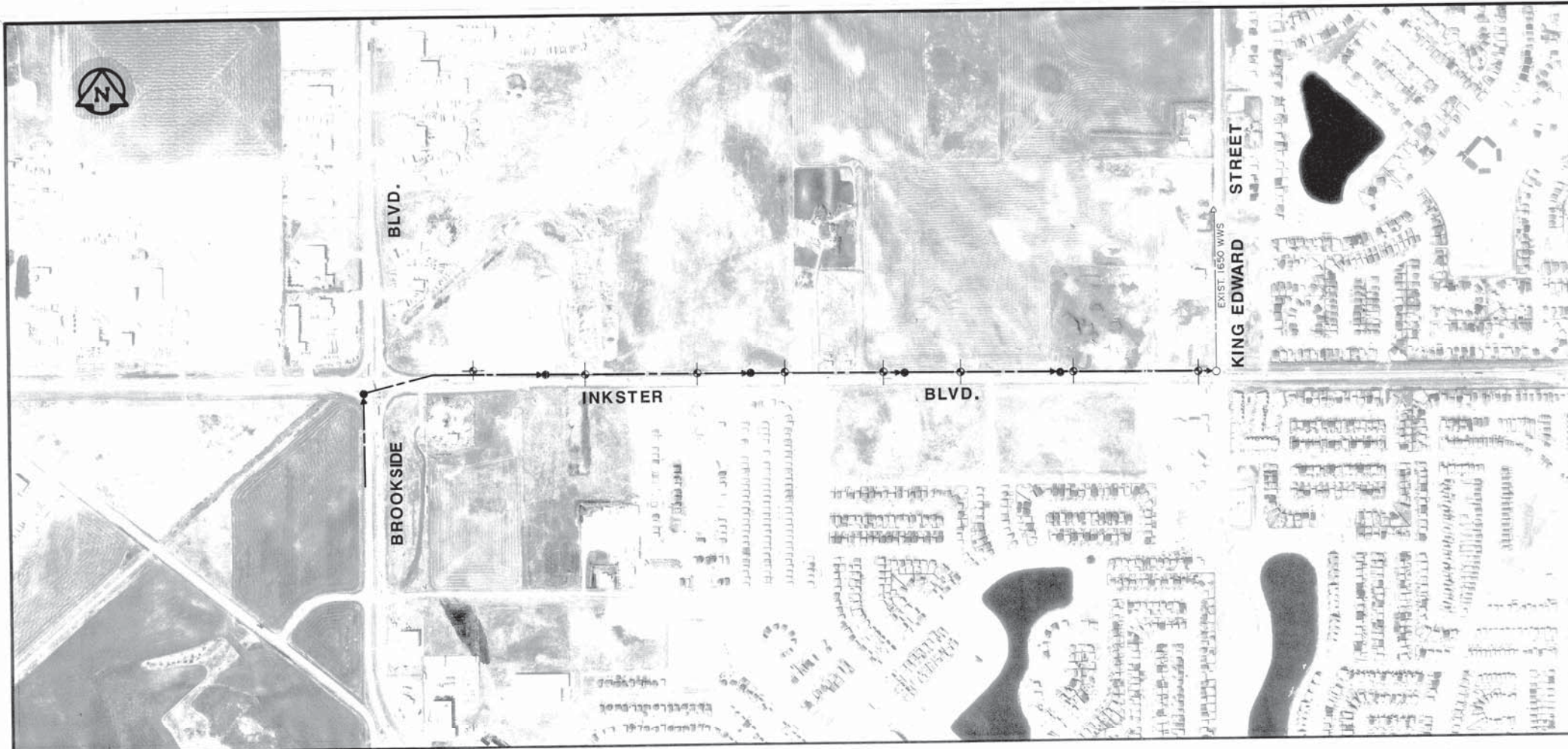
UMA Engineering Ltd.  
Winnipeg, Manitoba

COMPLETION DEPTH ** m	COMPLETE
LOGGED BY TH	DWG NO.
	Page 1 of 1

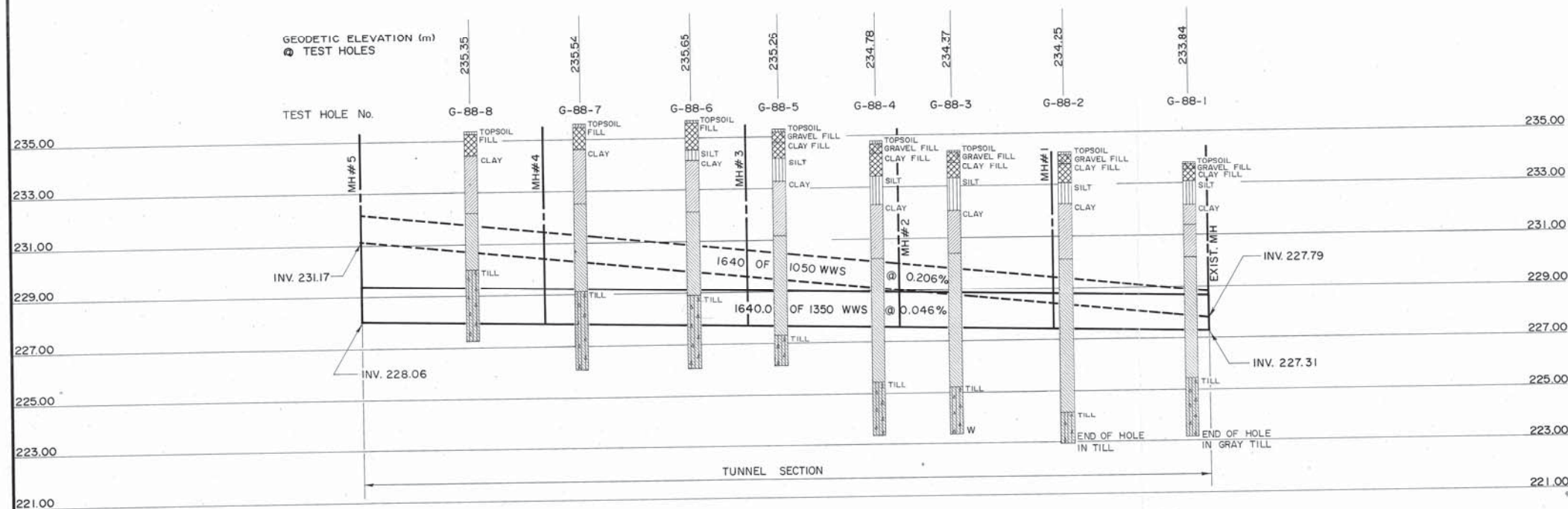
NORTH OF SASKATCHEWAN		SUBTERRANEAN LTD.		BOREHOLE No. G-88-7				
GENSTAR DEVELOPMENTS LTD.				Project No: 06-0888-266-01				
PROJECT ENGINEER: TW				ELEVATION 235.540 (m)				
SAMPLE TYPE <input type="checkbox"/> GRAB SAMPLE		<input checked="" type="checkbox"/> SHIELLY TUBE		<input checked="" type="checkbox"/> DISTURBED				
		<input type="checkbox"/> NO RECOVERY		<input type="checkbox"/> CORE BARREL				
				<input type="checkbox"/> WIRELINE-TYPE				
DEPTH (m)	▲ BULK DENSITY (t/m <sup>3</sup> ) ▲		USC	SOIL DESCRIPTION	SAMPLE TYPE	SAMPLE NO	Other comments	DEPTH (ft)
	PLASTIC	M.C						
	1.4 1.5 2.2 2.6							
	100 200 300 400							
	40 80 120 160							
0.0				TOPSOIL				0.0
				FILL-CLAY WITH GRANULAR				
				-TRACE OF TOPSOIL				
1.0				CLAY-WITH SILT				5.0
				-STIFF				
				-BROWN				
2.0								
3.0								10.0
				-TRANSITION TO GREY CLAY				
				-TR. SILT POCKETS				
				-WITH TILL INCLUSIONS				
				(LARGER WITH DEPTH)				
4.0								
5.0								
6.0								20.0
				-CLAY BECOMING SOFTER WITH DEPTH				
7.0				TILL-WITH SILT AND CLAY				25.0
				-GREY				
				-GRANULAR & COBBLES				
				-WET TO PAT TEST				
8.0								
9.0								30.0
10.0								
				AUGER REFUSAL @ 9.45				35.0
				NOTE:NO INDICATION OF WATER				
				NO SLOUGHING				
11.0								
12.0								40.0
13.0								
14.0								45.0
UMA Engineering Ltd. Winnipeg, Manitoba				COMPLETION DEPTH ** m	COMPLETE			
				LOGGED BY TH	DWG NO.			Page 1 of 1



NORTH OF SASKATCHEWAN		SUBTERRANEAN LTD.		BOREHOLE No. G-88-8				
GENSTAR DEVELOPMENTS LTD.				Project No: 00-0000-200-01				
PROJECT ENGINEER: TW				ELEVATION 235.950 (m)				
SAMPLE TYPE <input checked="" type="checkbox"/> GRAB SAMPLE		<input checked="" type="checkbox"/> SHELBY TUBE		<input checked="" type="checkbox"/> DISTURBED				
		<input type="checkbox"/> NO RECOVERY		<input type="checkbox"/> CORE BARREL				
				<input type="checkbox"/> WIPELINE-TYPE				
DEPTH (M)	▲ BULK DENSITY (1/m <sup>3</sup> ) ▲ 1.4 1.8 2.2 2.6		USC	SOIL DESCRIPTION	SAMPLE TYPE	SAMPLE NO	Other comments	DEPTH (ft)
	■ SHEAR STRENGTH (KPa) ■ 100 200 300 400							
	PLASTIC      MC      LIQUID 40      80      120      180							
0.0				VOPSOL FILL-CLAY WITH GRANULAR				0.0
-1.0				CLAY-SOME SILT -STIFF -BROWN -TRACE TILL INCLUSIONS				5.0
-2.0								10.0
-3.0				-TRANSITION TO GREY CLAY -TILL INCLUSIONS (GRANULAR IN TILL INCLUSIONS)				15.0
-4.0								20.0
-5.0								25.0
-6.0				TILL-SILT AND CLAY -LT BROWN -SOME GRANULAR				30.0
-7.0								35.0
-8.0				-DENSE -COBBLES & BOULDERS				40.0
-9.0				AUGER REFUSAL @ 8.08 NOTE: NO SLOUGHING NO SEEPAGE				45.0
-10.0								
-11.0								
-12.0								
-13.0								
-14.0								
UMA Engineering Ltd. Winnipeg, Manitoba				COMPLETION DEPTH ** m		COMPLETE		
				LOGGED BY TH		DWG NO.		Page 1 of 1



TEST HOLE LOCATION



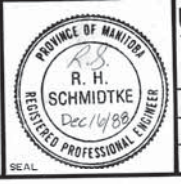
-ALL HOLES AUGURED TO REFUSAL UNLESS OTHERWISE NOTED.

NOTE: WWS = WASTE WATER SEWER

REV.	DESCRIPTION	DWN.	APP.	DATE
A	ADDED ALTERNATIVE 1050 WWS			12/28/08

LEGEND

	- FILL		- BROWN CLAY
	- TOPSOIL		- GREY CLAY
	- SILT		- TILL
W	- WATER SEEPAGE		



<b>uma</b> UMA Engineering Ltd. <small>Engineers &amp; Planners</small> 1479 Buffalo Place, Winnipeg, Manitoba, Canada R3T 1L7	
APPROVED BY: <i>[Signature]</i>	DATE: <i>12/28/08</i>
DRAWN BY: MAG	DESIGNED BY:
CHECKED BY: TH	CHECKED BY:
HORIZ. 1:5000	JOB No. 06-0699-266-01-01
SCALE: VERT. 1:100	

PROPERTY NORTH OF SASKATCHEWAN AVE.	
TEST HOLES FOR PROPOSED SEWER INKSTER BLVD (P. R. 221) KING EDWARD ST. TO BROOKSIDE BLVD.	
DWG. No.	02