

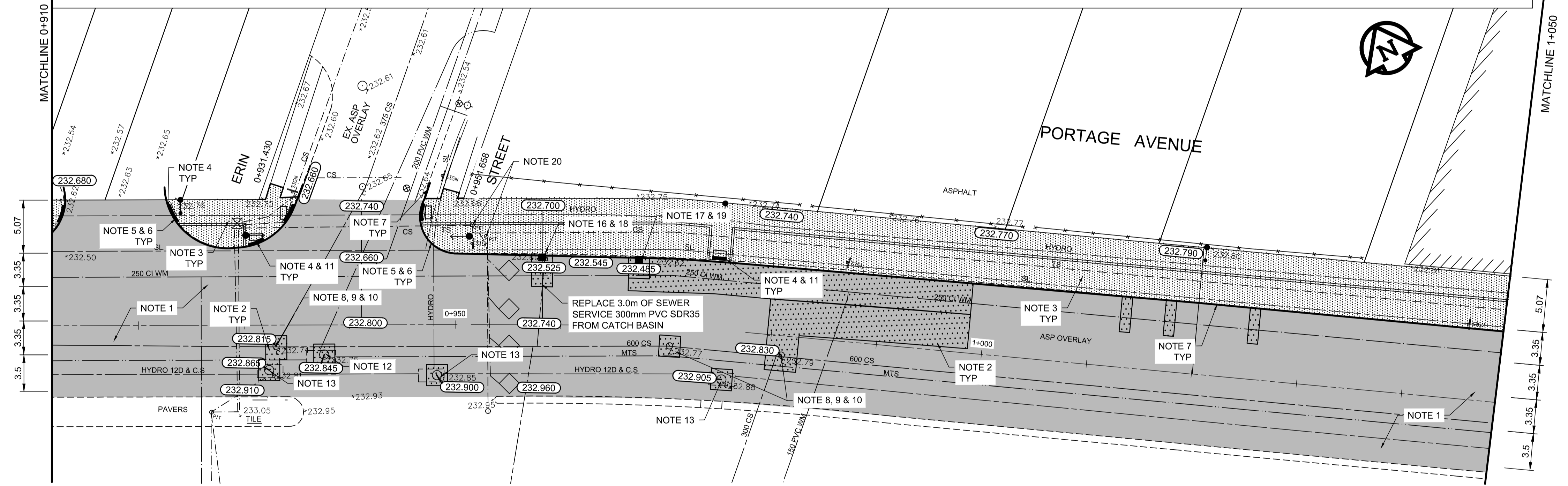
TYPICAL CROSS SECTION

REFERENCE NOTES

- A. PAVEMENT DIMENSIONS ARE TO BACK OF CURB
- B. BASELINE IS 12.0M SOUTH OF NORTH GUTTER
- C. PROPERTY LINES OBTAINED FROM THE CITY OF WINNIPEG L.B.I.S., AND NO SCALE FACTOR WAS APPLIED
- D. REFER TO AECOM FIELD BOOK NO. 4821, 4822 & 4823

CONSTRUCTION NOTES:

1. PLANE EXISTING ASPHALT AND CONSTRUCT NEW ASPHALTIC PAVEMENT OVERLAY TYPE 1A (AVERAGE THICKNESS 85mm)
2. REMOVE EXISTING PAVEMENT AND CONSTRUCT NEW 200mm REINFORCED CONCRETE PAVEMENT c/w 85mm TYPE 1A ASPHALT OVERLAY
3. REMOVE EXISTING CONCRETE SIDEWALK AND CONSTRUCT NEW 100mm SIDEWALK c/w PAVING STONE BAND (SEE DETAIL 1)
4. RENEW MONOLITHIC CURB RAMP (100mm HT. INTEGRAL)
5. CONSTRUCT NEW MODIFIED BARRIER CURB (150mm AVG. HT. SEPARATE)
6. REMOVE EXISTING BARRIER CURB
7. RENEW BARRIER CURB (100mm AVG. HT. REVEAL)
8. ADJUST EXISTING CATCH BASIN/MANHOLE TO GRADE
9. REMOVE EXISTING FRAME AND COVER AND PLACE NEW FRAME AND COVER (AP-004 AND AP-005)
10. INSTALL NEW CAST IRON RISER RING
11. INSTALL NEW DETECTABLE SURFACE WARNING TILES
12. ADJUST MTS MANHOLE FRAME AND COVER c/w 50mm CAST IRON RISER RING
13. ADJUST EXISTING HYDRO MANHOLE (BY OTHERS)
14. ADJUST EXISTING CURB STOP TO GRADE
15. INSTALL NEW VALVE BOX EXTENTION
16. REMOVE EXISTING CATCHBASIN AND CURB INLET
17. REMOVE EXISTING CURB INLET BOX
18. INSTALL NEW CURB AND GUTTER INLET c/w CATCHBASIN (SD-024 - 1800mm) AND CONNECT TO EXISTING LEAD
19. INSTALL NEW CURB AND GUTTER INLET c/w CATCHBASIN (SD-024 - 1200mm) AND CONNECT TO EXISTING LEAD
20. ADJUST SIGNAL SERVICE BOX FRAME AND COVER



150 mm W.M.	WATERMAIN	150 mm W.M.	HYDRO	—X—	C PROFILE
300mm L.D.S.	LAND DRAINAGE SEWER	300mm L.D.S.	M.T.S.	—□—	NORTH/WEST GUTTER
250mm W.W.S.	WASTEWATER SEWER	250mm W.W.S.	CONCRETE	—■—	MEDIAN GUTTER
	MANHOLE		ASPHALT	—◇—	N/W PROPERTY LINE
	CATCH BASIN		PROPERTY LINE	—○—	S/E PROPERTY LINE
	CURB INLET		SURVEY BAR		
	JUNCTIONS		ELEVATION (35.750)		
	CULVERT		TREE		
	GAS		SIDEWALK RAMP		
EXISTING	LEGEND - PLAN	PROPOSED	CONCRETE SIDEWALK		
			FENCE		
			LEGEND - PROFILE		

LOCATION APPROVED UNDERGROUND STRUCTURES

SUPV. U/G STRUCTURES COMMITTEE DATE

NOTE: LOCATION OF UNDERGROUND STRUCTURES AS SHOWN ARE BASED ON THE BEST INFORMATION AVAILABLE. BUT NO GUARANTEE IS GIVEN THAT ALL EXISTING UTILITIES ARE SHOWN OR THAT THE GIVEN LOCATIONS ARE EXACT. CONFIRMATION OF EXISTENCE AND EXACT LOCATION OF ALL SERVICES MUST BE OBTAINED FROM THE INDIVIDUAL UTILITIES BEFORE PROCEEDING WITH CONSTRUCTION.

B.M. 89R581	S.W. corner Portage Ave. & Sprague St., Tdbt. on pipe, 4.8m E. of W.L. Sprague St. produced from the W. along the S.L. of Portage Ave.		
ELEV. 232.540			
0	ISSUED FOR TENDER	2014/06/26	KWR
NO.	REVISIONS	DATE	BY

**AECOM**

DESIGNED BY: BC

CHECKED BY: KWR

DRAWN BY: RT, PB

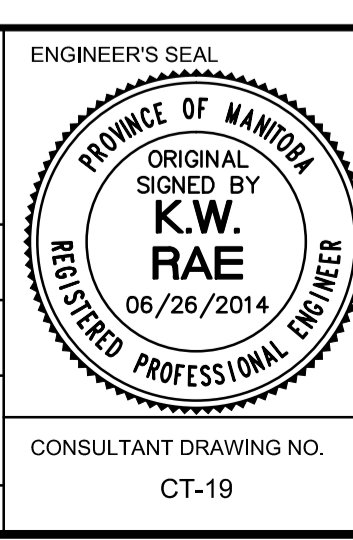
APPROVED BY:

HOR. SCALE: 1:250

VERTICAL: 1:10

RELEASED FOR CONSTRUCTION BY:

ISSUED FOR TENDER: 2014/06/26



**METRIC**

WHOLE NUMBERS INDICATE MILLIMETRES  
DECIMALIZED NUMBERS INDICATE METRES

**THE CITY OF WINNIPEG**  
PUBLIC WORKS DEPARTMENT  
ENGINEERING DIVISION

PORTAGE AVENUE REHABILITATION:  
PART A- EASTBOUND FROM SHERBURN ST. TO MARYLAND ST.  
PART B- WESTBOUND FROM EMPRESS ST. TO MINTO ST.

PLAN / PROFILE PART B  
STATION 0+910 TO STATION 1+050

CITY DRAWING NUMBER: P-3356-08  
SHEET 19 OF 21

CONSULTANT DRAWING NO. CT-19