

- REFERENCE NOTES**
- A. PAVEMENT DIMENSIONS ARE TO BACK OF CURB
 - B. BASELINE IS 12.0M SOUTH OF NORTH GUTTER
 - C. PROPERTY LINES OBTAINED FROM THE CITY OF WINNIPEG L.B.I.S., AND NO SCALE FACTOR WAS APPLIED
 - D. REFER TO AECOM FIELD BOOK NO. 4821, 4822 & 4823

- CONSTRUCTION NOTES:**
1. PLANE EXISTING ASPHALT AND CONSTRUCT NEW ASPHALTIC PAVEMENT OVERLAY TYPE 1A (AVERAGE THICKNESS 85mm)
 2. REMOVE EXISTING PAVEMENT AND CONSTRUCT NEW 200mm REINFORCED CONCRETE PAVEMENT c/w 85mm TYPE 1A ASPHALT OVERLAY
 3. RENEW 100mm SIDEWALK
 4. ADJUST EXISTING CATCH BASIN/MANHOLE TO GRADE
 5. REMOVE EXISTING FRAME AND COVER AND PLACE NEW FRAME AND COVER (AP-004 AND AP-005)
 6. INSTALL NEW CAST IRON RISER RING
 7. REMOVE AND INSTALL NEW MTS MANHOLE FRAME AND COVER c/w 50mm CAST IRON RISER RING
 8. ADJUST EXISTING HYDRO MANHOLE (BY OTHERS)
 9. PLACE LANDSCAPING MULCH c/w WEED BARRIER
 10. ADJUST EXISTING CURB STOP TO GRADE
 11. ADJUST EXISTING VALVE BOX
 12. INSTALL 11.5 m OF 375mm PVC SEWER SERVICE (TRENCHLESS) AND CONNECT TO EXISTING MH AND CB.
 13. REMOVE AND REINSTALL ALUMINUM BARRIER RAIL BOTH SIDES
 14. ABANDON EXIST. 375mm SEWER SERVICE.
 15. REGRADE PAVERS.
 16. INSTALL NEW CURB AND GUTTER INLET c/w CATCHBASIN (SD-024 1800mm) AND CONNECT TO EXISTING LEAD.
 17. ABANDON CATCHBASIN AND LEAD TO NEW CATCHBASIN

150 mm W.M.	WATERMAIN	150 mm W.M.	HYDRO	PROPERTY LINE	EXISTING	LEGEND - PROFILE	PROPOSED
300mm L.D.S.	LAND DRAINAGE SEWER	300mm L.D.S.	M.T.S.	SURVEY BAR	EXISTING	LEGEND - PROFILE	PROPOSED
250mm W.W.S.	WASTEWATER SEWER	250mm W.W.S.	CONCRETE	ELEVATION (35.750)	EXISTING	LEGEND - PROFILE	PROPOSED
	MANHOLE		ASPHALT	TREE	EXISTING	LEGEND - PROFILE	PROPOSED
	CATCH BASIN		PROPERTY LINE	SIDEWALK RAMP	EXISTING	LEGEND - PROFILE	PROPOSED
	CURB INLET		SURVEY BAR	CONCRETE SIDEWALK	EXISTING	LEGEND - PROFILE	PROPOSED
	JUNCTIONS		ELEVATION	FENCE	EXISTING	LEGEND - PROFILE	PROPOSED
	CULVERT		TREE		EXISTING	LEGEND - PROFILE	PROPOSED
	GAS		SIDEWALK RAMP		EXISTING	LEGEND - PROFILE	PROPOSED
			CONCRETE SIDEWALK		EXISTING	LEGEND - PROFILE	PROPOSED
			FENCE		EXISTING	LEGEND - PROFILE	PROPOSED

LOCATION APPROVED UNDERGROUND STRUCTURES

SUPV. U/G STRUCTURES COMMITTEE DATE

NOTE:
LOCATION OF UNDERGROUND STRUCTURES AS SHOWN ARE BASED ON THE BEST INFORMATION AVAILABLE. BUT NO GUARANTEE IS GIVEN THAT ALL EXISTING UTILITIES ARE SHOWN OR THAT THE GIVEN LOCATIONS ARE EXACT. CONFIRMATION OF EXISTENCE AND EXACT LOCATION OF ALL SERVICES MUST BE OBTAINED FROM THE INDIVIDUAL UTILITIES BEFORE PROCEEDING WITH CONSTRUCTION.

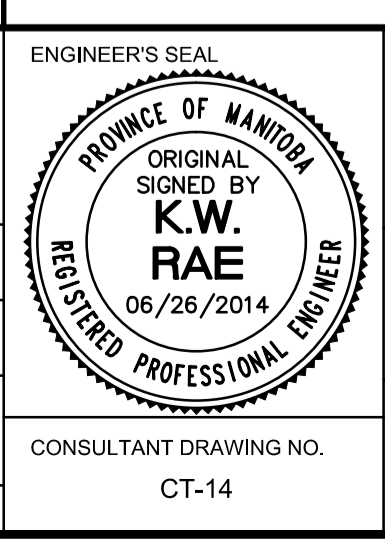
B.M. 89R581	S.W. corner Portage Ave. & Sprague St., Tbt. on pipe, 4.8m E. of W.L. Sprague St. produced from the W. along the S.L. of Portage Ave.				
ELEV. 232.540					
NO.	ISSUED FOR TENDER	DATE	2014/06/26	BY	KWR
NO.	REVISIONS	DATE	2014/06/26	DATE	

AECOM

DESIGNED BY: BC
DRAWN BY: RT, PB
HOR. SCALE: 1:250
VERTICAL: 1:10

CHECKED BY: KWR
APPROVED BY:
RELEASED FOR CONSTRUCTION BY:

ISSUED FOR TENDER: 2014/06/26
REVISIONS: 2014/06/26



METRIC
WHOLE NUMBERS INDICATE MILLIMETRES
DECIMALIZED NUMBERS INDICATE METRES

THE CITY OF WINNIPEG
PUBLIC WORKS DEPARTMENT
ENGINEERING DIVISION

PORTAGE AVENUE REHABILITATION:
PART A- EASTBOUND FROM SHERBURN ST. TO MARYLAND ST.
PART B- WESTBOUND FROM EMPRESS ST. TO MINTO ST.

PLAN / PROFILE PART B
STATION 0+220 TO STATION 0+360

CITY DRAWING NUMBER: P-3356-03
SHEET 14 OF 21

CONSULTANT DRAWING NO. CT-14

