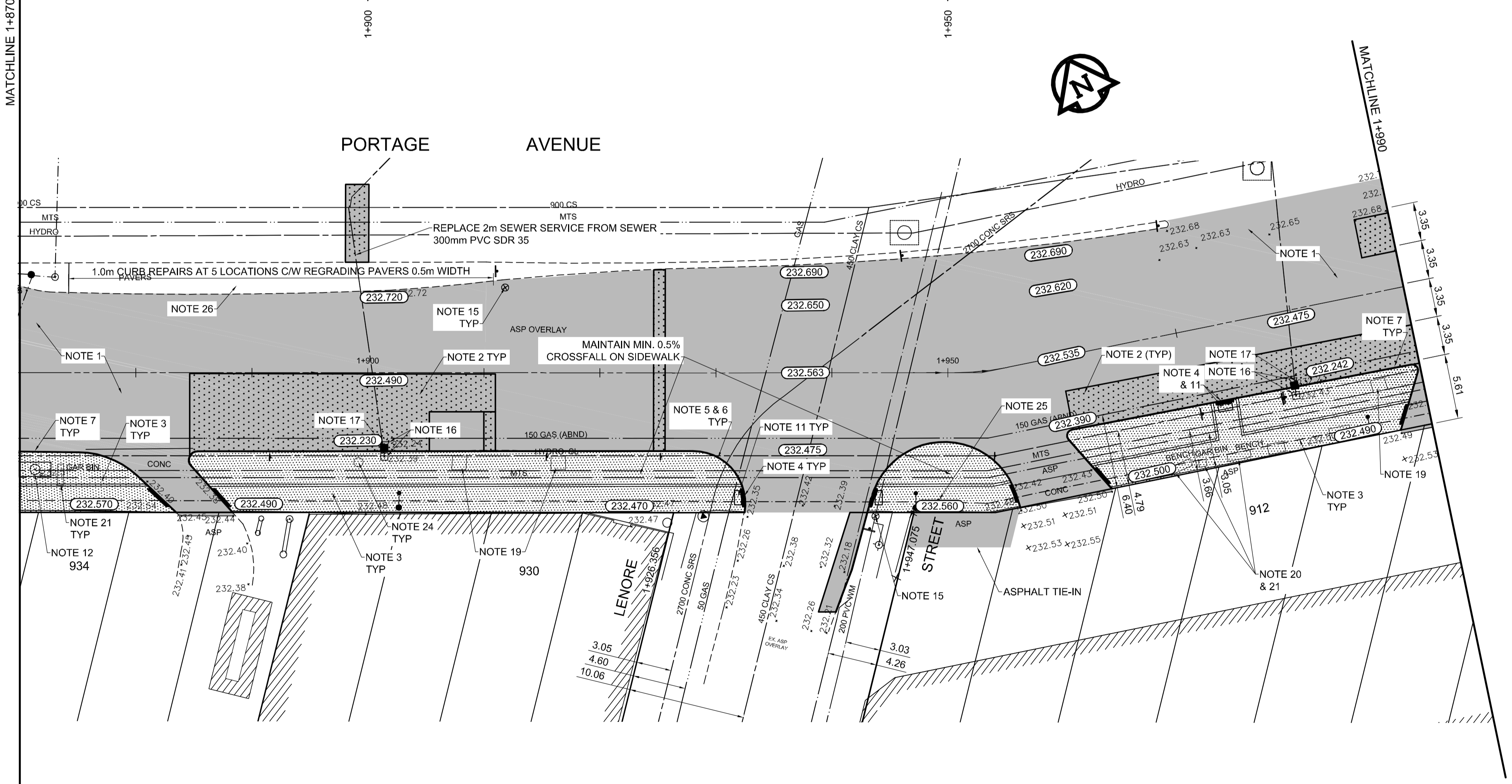


- REFERENCE NOTES**
- A. PAVEMENT DIMENSIONS ARE TO BACK OF CURB
 - B. BASELINE IS 12.0M NORTH OF SOUTH PROPERTY LINE
 - C. PROPERTY LINES OBTAINED FROM THE CITY OF WINNIPEG L.B.I.S., AND NO SCALE FACTOR WAS APPLIED
 - D. REFER TO AECOM FIELD BOOK NO. 4821, 4822 & 4823

- CONSTRUCTION NOTES:**
1. PLANE EXISTING ASPHALT AND CONSTRUCT NEW ASPHALTIC PAVEMENT OVERLAY TYPE 1A (AVERAGE THICKNESS 85mm)
 2. REMOVE EXISTING PAVEMENT AND CONSTRUCT NEW 200mm REINFORCED CONCRETE PAVEMENT c/w 85mm TYPE 1A ASPHALT OVERLAY
 3. REMOVE EXISTING CONCRETE SIDEWALK AND CONSTRUCT NEW 100mm SIDEWALK c/w PAVING STONE BAND (SEE DETAIL 1)
 4. RENEW EXISTING MONOLITHIC CURB RAMP (10mm HT. INTEGRAL)
 5. CONSTRUCT NEW MODIFIED BARRIER CURB (150mm AVG. HT. REVEAL SEPARATE)
 6. REMOVE EXISTING BARRIER CURB
 7. RENEW EXISTING BARRIER CURB (100mm AVG. HT. REVEAL)
 8. ADJUST EXISTING CATCH BASIN/MANHOLE TO GRADE
 9. REMOVE EXISTING FRAME AND COVER AND PLACE NEW FRAME AND COVER (AP-004 AND AP-005)
 10. INSTALL NEW CAST IRON RISER RING
 11. INSTALL NEW DETECTABLE SURFACE WARNING TILES
 12. ADJUST MTS MANHOLE FRAME AND COVER
 13. ADJUST SIGNALS SERVICE BOX
 14. ADJUST EXISTING CURB STOP TO GRADE
 15. INSTALL VALVE BOX EXTENTION
 16. REMOVE EXISTING CATCHBASIN AND CURB INLET
 17. INSTALL NEW CURB AND GUTTER INLET c/w CATCHBASIN (SD-024) AND CONNECT TO EXISTING LEAD
 18. REGRADE EXISTING PAVING STONES
 19. REMOVE EXISTING TREE WELL
 20. REMOVE AND INSTALL EXISTING BENCH (BY OTHERS)
 21. REMOVE AND INSTALL EXISTING GARBAGE BIN (BY OTHERS)
 22. REMOVE AND INSTALL EXISTING BUS SHELTER (BY OTHERS)
 23. INSTALL PAVING STONE (SEE DETAIL 2)
 24. REMOVE AND REINSTALL CONC. PLANTERS (BY OTHERS)
 25. ADJUST EXISTING VALVE BOX



EXISTING	LEGEND - PLAN	PROPOSED	EXISTING	LEGEND - PLAN	PROPOSED	EXISTING	LEGEND - PROFILE	PROPOSED
150 mm W.M.	WATERMAIN	150 mm W.M.	---	HYDRO	---	x	C PROFILE	---
300mm L.D.S.	HYDRANT	300mm L.D.S.	---	M.T.S.	---	o	SOUTH/EAST GUTTER	---
250mm W.W.S.	VALVE	250mm W.W.S.	---	CONCRETE	---	o	MEDIAN GUTTER	---
	LAND DRAINAGE SEWER		---	ASPHALT	---	o	N/W PROPERTY LINE	---
	WASTEWATER SEWER		---	PROPERTY LINE	---	o	S/E PROPERTY LINE	---
	MANHOLE		o	SURVEY BAR	o			
	CATCH BASIN		o	ELEVATION	35.750			
	CURB INLET		o	TREE				
	BUILDING OUTLINE		o	SIDEWALK RAMP				
	CULVERT		o	CONCRETE SIDEWALK				
	GAS		o	FENCE				

LOCATION APPROVED UNDERGROUND STRUCTURES

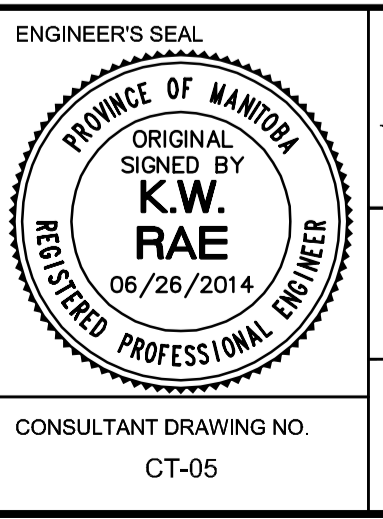
SUPV. U/G STRUCTURES COMMITTEE DATE

NOTE:
LOCATION OF UNDERGROUND STRUCTURES AS SHOWN ARE BASED ON THE BEST INFORMATION AVAILABLE, BUT NO GUARANTEE IS GIVEN THAT ALL EXISTING UTILITIES ARE SHOWN OR THAT THE GIVEN LOCATIONS ARE EXACT. CONFIRMATION OF EXISTENCE AND EXACT LOCATION OF ALL SERVICES MUST BE OBTAINED FROM THE INDIVIDUAL UTILITIES BEFORE PROCEEDING WITH CONSTRUCTION.

B.M. 89R581
ELEV. 232.540
S.W. corner Portage Ave. & Sprague St., Tilt. on pipe, 4.8m E. of W.L. Sprague St. produced from the W. along the S.L. of Portage Ave.

AECOM

DESIGNED BY: BC
CHECKED BY: KWR
DRAWN BY: RT, PB
APPROVED BY:
HOR. SCALE: 1:250
VERTICAL: 1:10
RELEASED FOR CONSTRUCTION BY:
DATE: 2014/06/26



METRIC
WHOLE NUMBERS INDICATE MILLIMETRES
DECIMALIZED NUMBERS INDICATE METRES

THE CITY OF WINNIPEG
PUBLIC WORKS DEPARTMENT
ENGINEERING DIVISION

PORTAGE AVENUE REHABILITATION:
PART A- EASTBOUND FROM SHERBURN ST. TO MARYLAND ST.
PART B- WESTBOUND FROM EMPRESS ST. TO MINTO ST.

PLAN / PROFILE PART A
STATION 1+870 TO STATION 1+990

CITY DRAWING NUMBER: P-3359-05
SHEET 5 OF 21

CONSULTANT DRAWING NO. CT-05